



1901 Scarth Street, Regina, SK

Iconic A+ Office Tower **for lease**

Canada Life Place is an iconic A+ Office Tower located on the corner of 12th Avenue and Scarth Street, overlooking the downtown gem Victoria Park. The views from the tower must be seen to be appreciated. The building is in the center of the Regina Business District, close to restaurants, hotels and shopping.

CLP can suit varying space needs. The building has underground, parkade and surface parking available to tenants ranging from \$230 to \$275 per stall.

Accelerating success.

Asking:

Market PSF



Prime park
side location



High quality
A+ building

D'Arcy Skwara, CPA, CMA

Vice President | Sales Associate | Partner
+1 306 535 2600
darcy.skwara@colliers.com

Ella Molnar

Sales Associate
+1 306 591 3767
ella.molnar@colliers.com



Property Overview

Zoning	DD	
Available Area	±10,000 SF	Office
Building Area	163,844 SF	
Net Lease Rate	Market	
Occupancy Costs	\$19.50 PSF	Office Tower
Possession Date	Ready for improvements	



Prime park
side location



Security station
in lobby



High quality +A
building



High
Foot Traffic

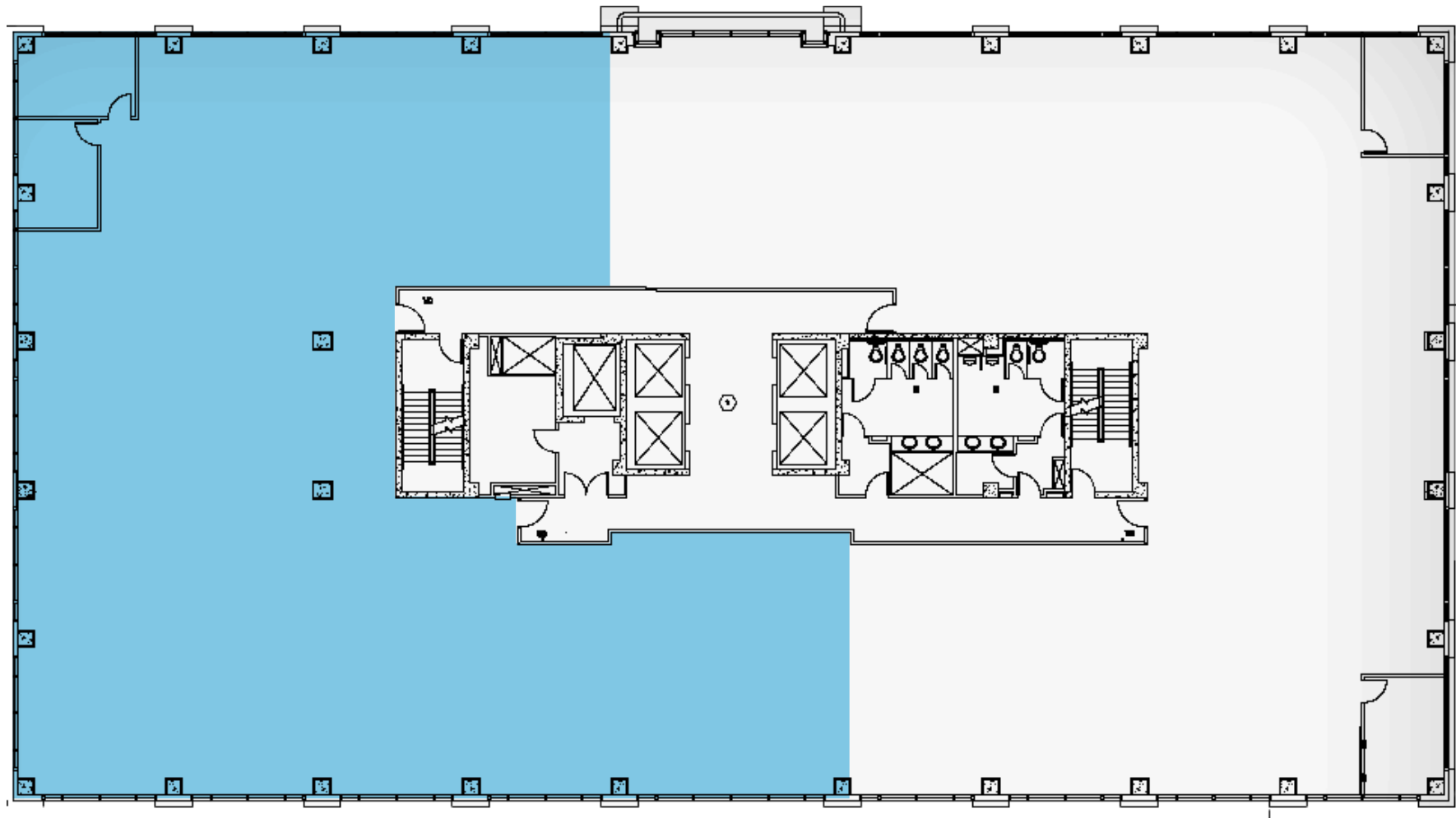


Underground
parking

Floor Plan

3rd Floor

±10,000 SF



 Available