

Coworking

2030 Bristol Circle Suite 210
Oakville, ON

Zachary Koa

Sales Representative

+1 647 232 7871

zachary.koa@colliers.com

Additional features

- Up to 24 hot desks
- Up to 32 dedicated desks
- Up to 9 private offices (Can accommodate 1-6 people per private office)
- 1 large executive suite (450 SF)
- One enclosed area (1600 SF) that can accommodate up to 25 people (8 private offices & 8 dedicated desks)

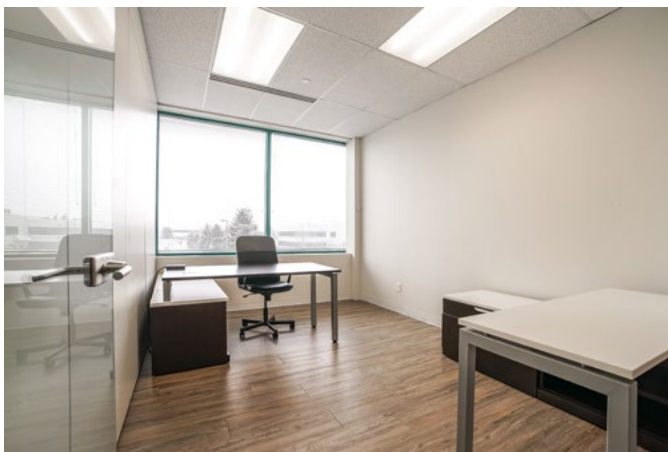
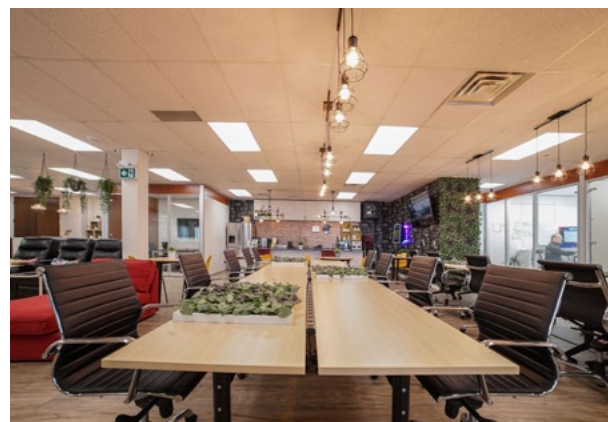
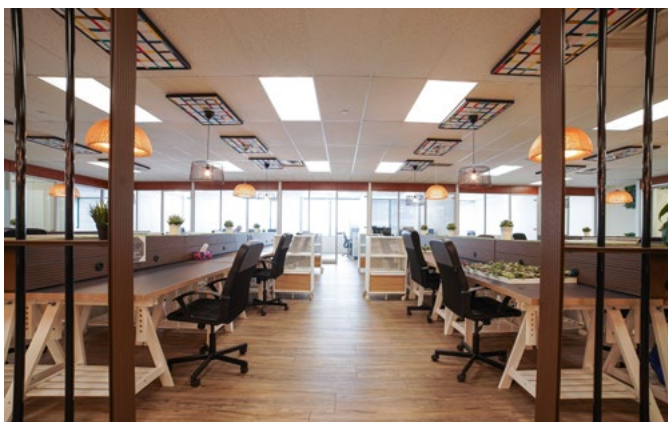
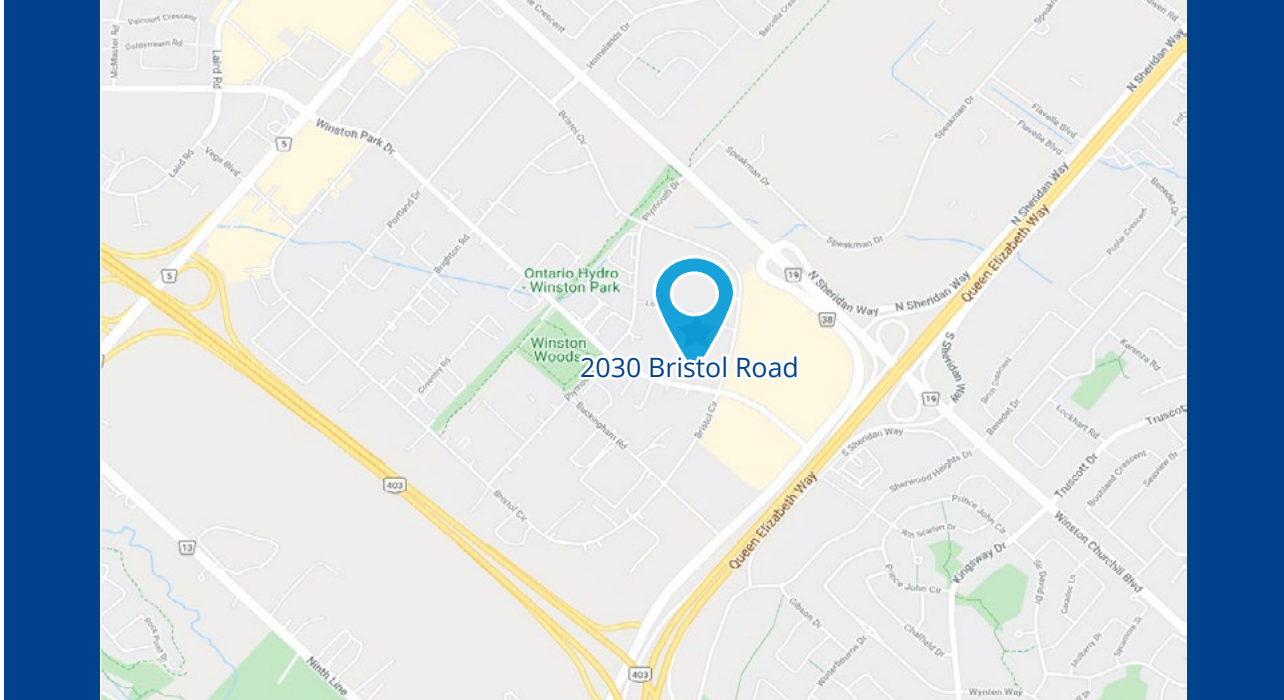


Amenities

- Beautiful modern space filled with natural light
- Premium Italian espresso, coffee & free snacks
- Administrative team on-site
- 1GB Fibre Internet
- Free parking
- Virtual Administrative Assistant
- Virtual Receptionist and phone answering
- Meeting spaces for up to 34 people
- Conveniently located by major highways (403, 407 & QEW) with transit at doorstep
- 2 Across from plaza with a variety of amenities: hotels, restaurants, cinema, childcare, etc. 3 min drive to Gyms

Details

Availability	Immediately
Term	Flexible
Rates	Contact Listing Agent



2030 Bristol Road Suite 210 Oakville, ON



1140 Bay Street
Suite 4000
Toronto, ON
M5S 2B4 Canada
Main: +1 555 555 5555
colliers.com



Zachary Koa
Sales Representative
+1 647 232 7871
Zachary.Koa@colliers.com

Copyright © 2021 Colliers International. This document has been prepared by Colliers International for advertising and general information only. Colliers International makes no guarantees, representations or warranties of any kind, expressed or implied, regarding the information including, but not limited to, warranties of content, accuracy and reliability. Any interested party should undertake their own inquiries as to the accuracy of the information. Colliers International excludes unequivocally all inferred or implied terms, conditions and warranties arising out of this document and excludes all liability for loss and damages arising there from. This publication is the copyrighted property of Colliers international and/or its licensor(s). Copyright © 2021