



401 Bentley Street, Unit 5 & 6, Markham

# Warehouse/industrial unit available **for lease**

Prime location within Markham's core industrial area. Minutes to Highway 404 and 407, and many local amenities.  
Excellent truck level shipping.

Accelerating success.

Asking:

**\$17**  
PSF



Minutes to  
Highway  
404 & 407



Excellent  
shipping

**Newton Leung**

Senior Vice President  
Sales Representative

+1 416 318 8056  
Newton.Leung@colliers.com

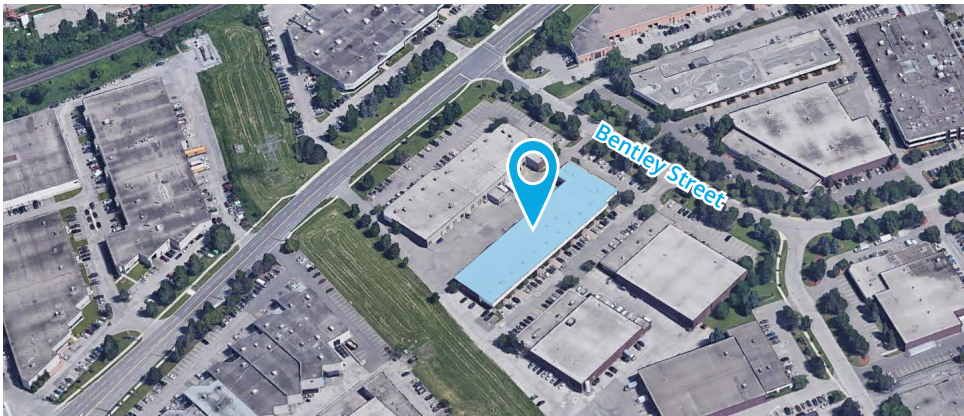


# Property Overview

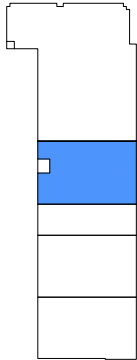
<b>Address</b>	401 Bentley Street, Unit 5 & 6, Markham, ON L3R 8H6
<b>Zoning</b>	Industrial - Warehouse
<b>Clear Height</b>	16' 3"
<b>Truck Level Shipping Door</b>	2
<b>Garage Type</b>	Outside/Surface
<b>Price</b>	\$17.00 PSF + Escalation each year
<b>T.M.I.</b>	\$4.84 (2022)
<b>Term</b>	60/120 Months
<b>Availability</b>	Immediate

## 401 Bentley Street

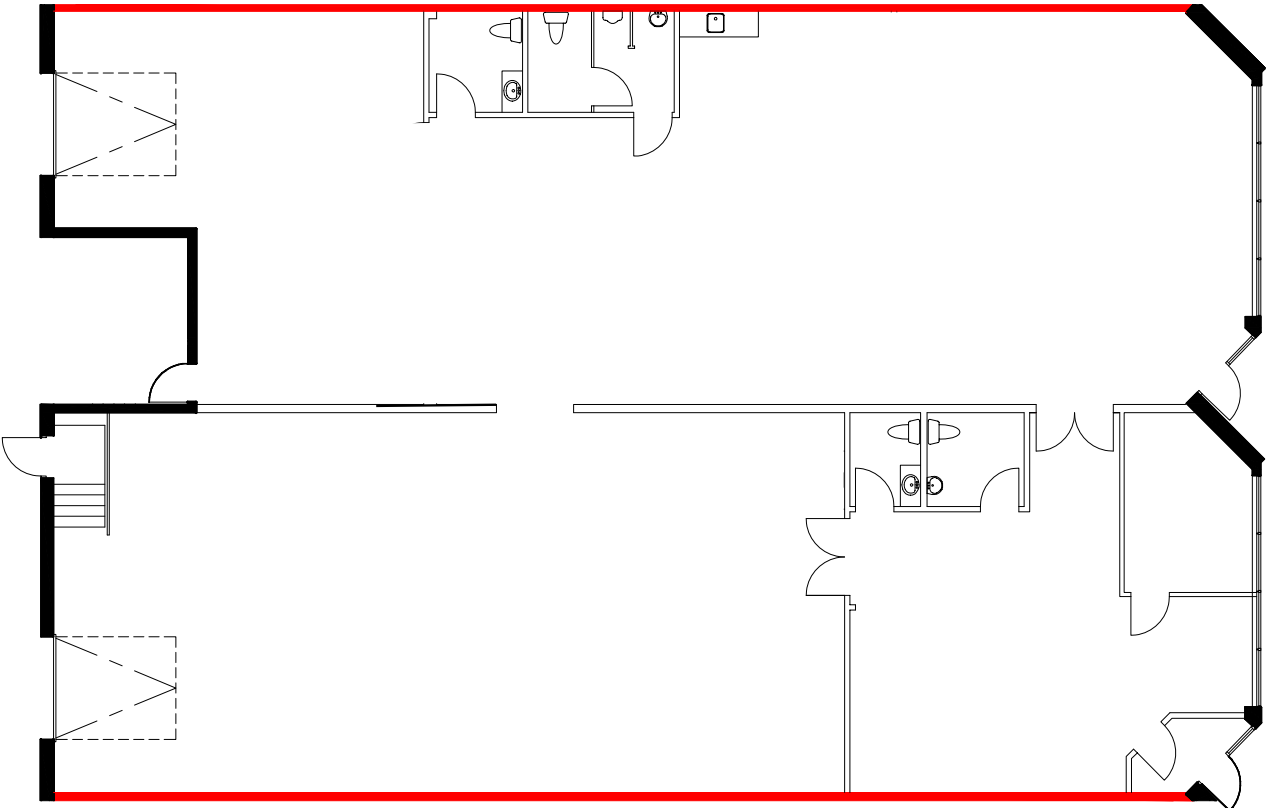
Unit Number	Office SF	Warehouse SF	Total SF
5-6	864 (15%)	4,898 (85%)	5,762



# Floor Plan



KEY PLAN





401 Bentley Street, Markham

### Newton Leung

Senior Vice President  
Sales Representative

+1 416 318 8056  
Newton.Leung@colliers.com

[View Online Listing](#)

Copyright © 2021 Colliers International. This document has been prepared by Colliers International for advertising and general information only. Colliers International makes no guarantees, representations or warranties of any kind, expressed or implied, regarding the information including, but not limited to, warranties of content, accuracy and reliability. Any interested party should undertake their own inquiries as to the accuracy of the information. Colliers International excludes unequivocally all inferred or implied terms, conditions and warranties arising out of this document and excludes all liability for loss and damages arising there from. This publication is the copyrighted property of Colliers international and/or its licensor(s). 245 Yorkland Boulevard, Suite 200 | Toronto, ON M2J 4W9



[collierscanada.com](http://collierscanada.com)