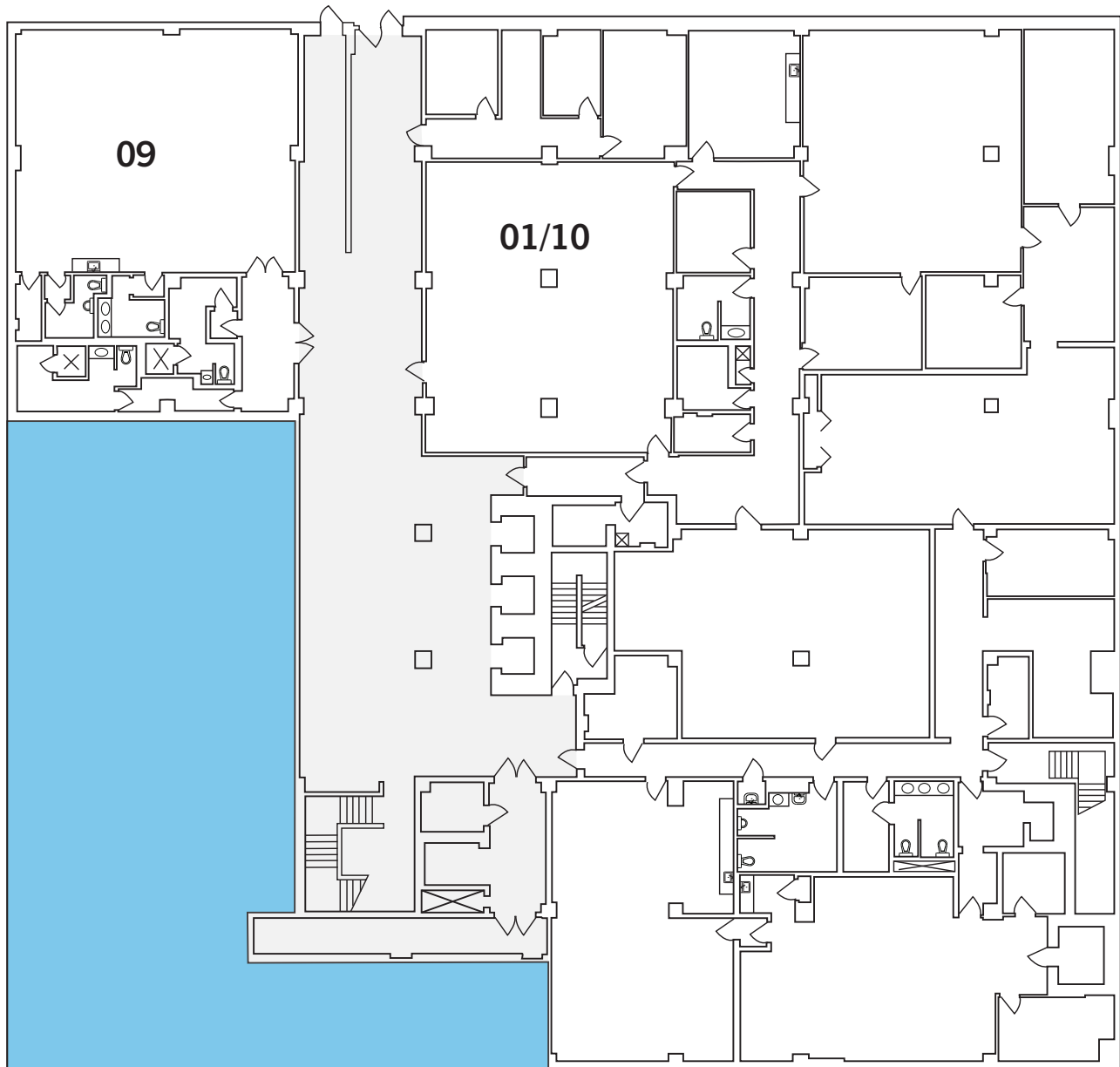


ROYAL BANK BUILDING

FOR LEASE | 10117 JASPER AVENUE, EDMONTON



CONCOURSE

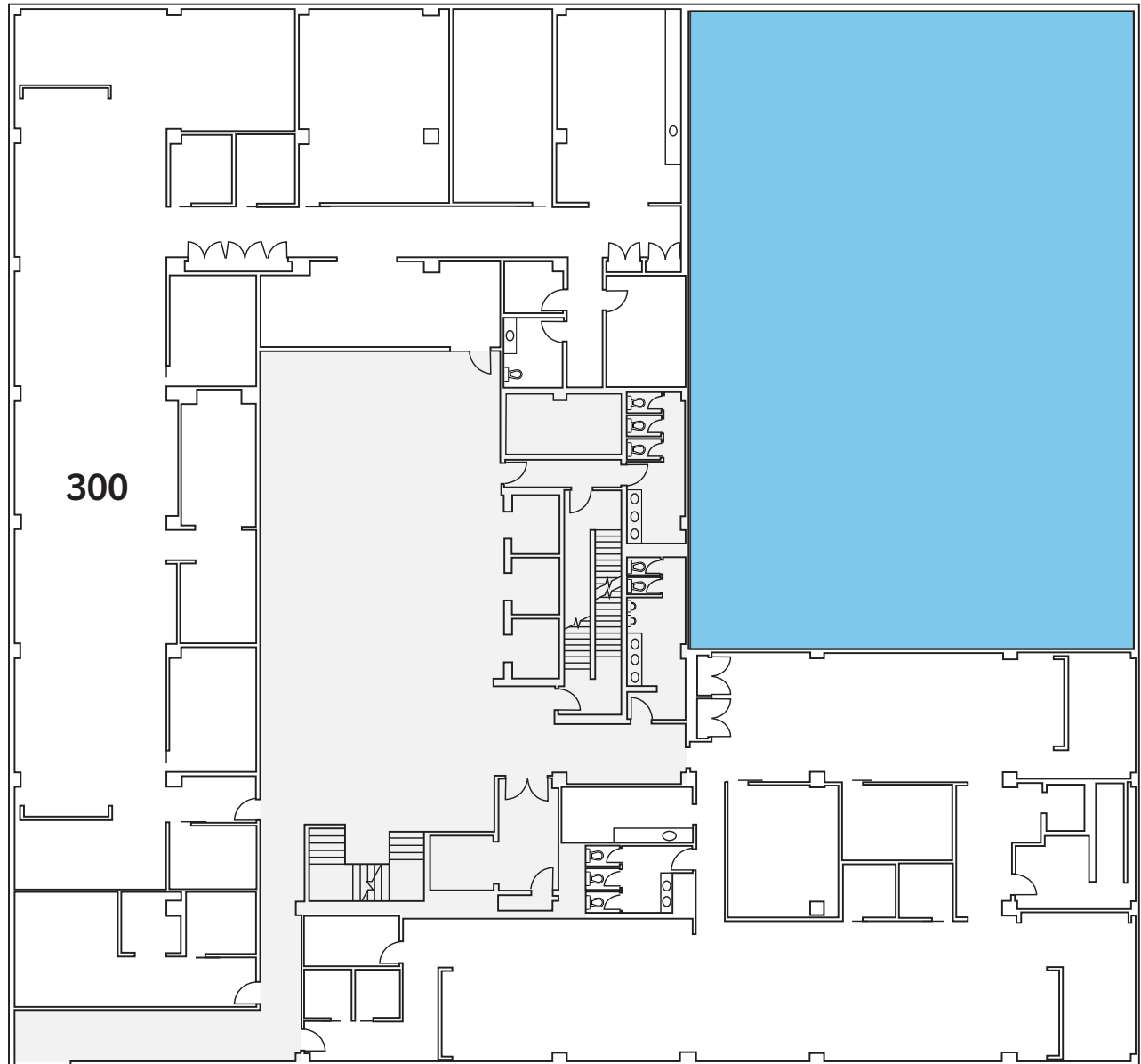
SUITE 09 | 2,867 SF AVAILABLE IMMEDIATELY

SUITE 01/10 | 12,409 SF AVAILABLE IMMEDIATELY



ROYAL BANK BUILDING

FOR LEASE | 10117 JASPER AVENUE, EDMONTON

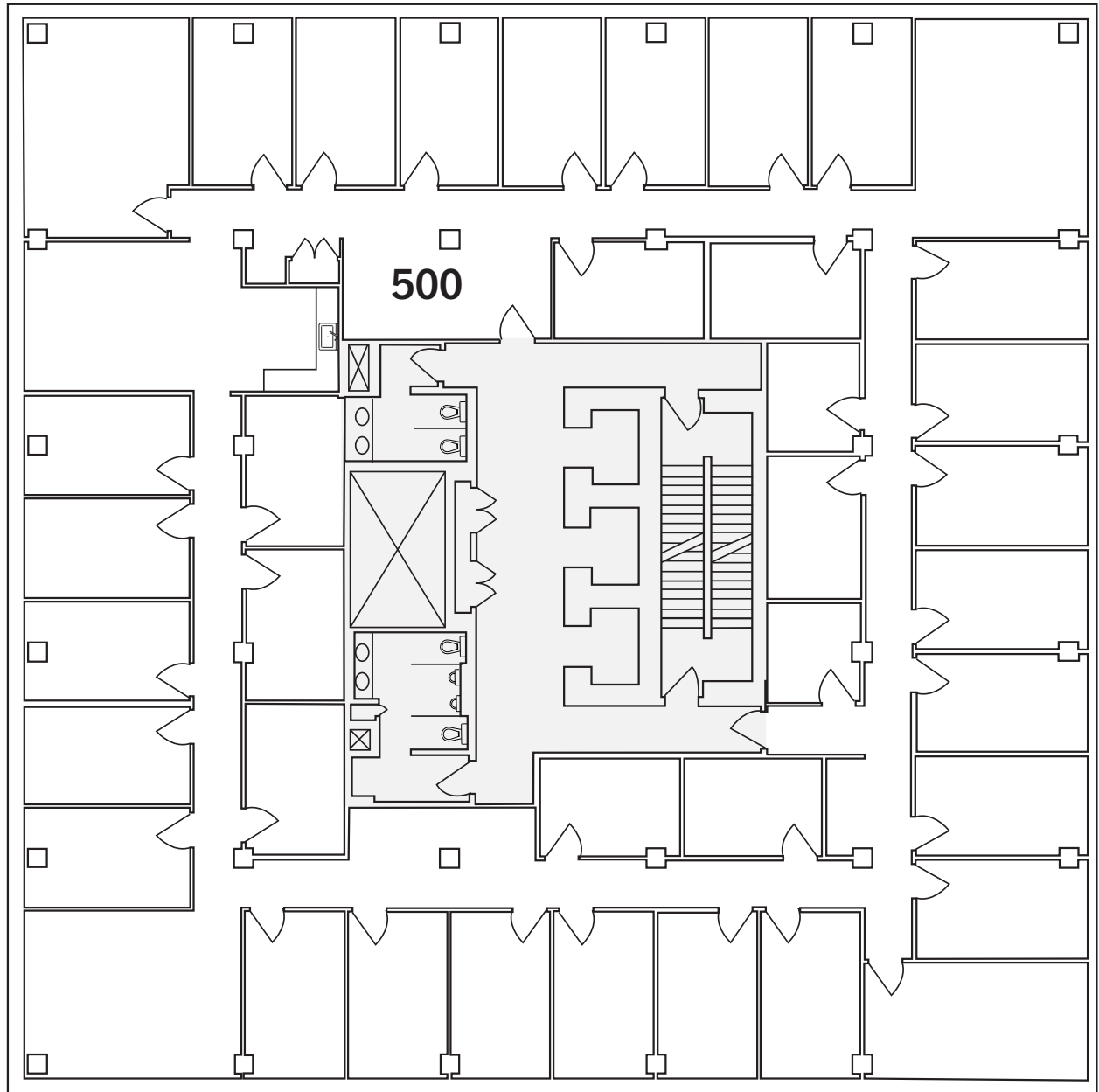


3RD FLOOR
SUITE 300 | 12,853 SF AVAILABLE IMMEDIATELY



ROYAL BANK BUILDING

FOR LEASE | 10117 JASPER AVENUE, EDMONTON



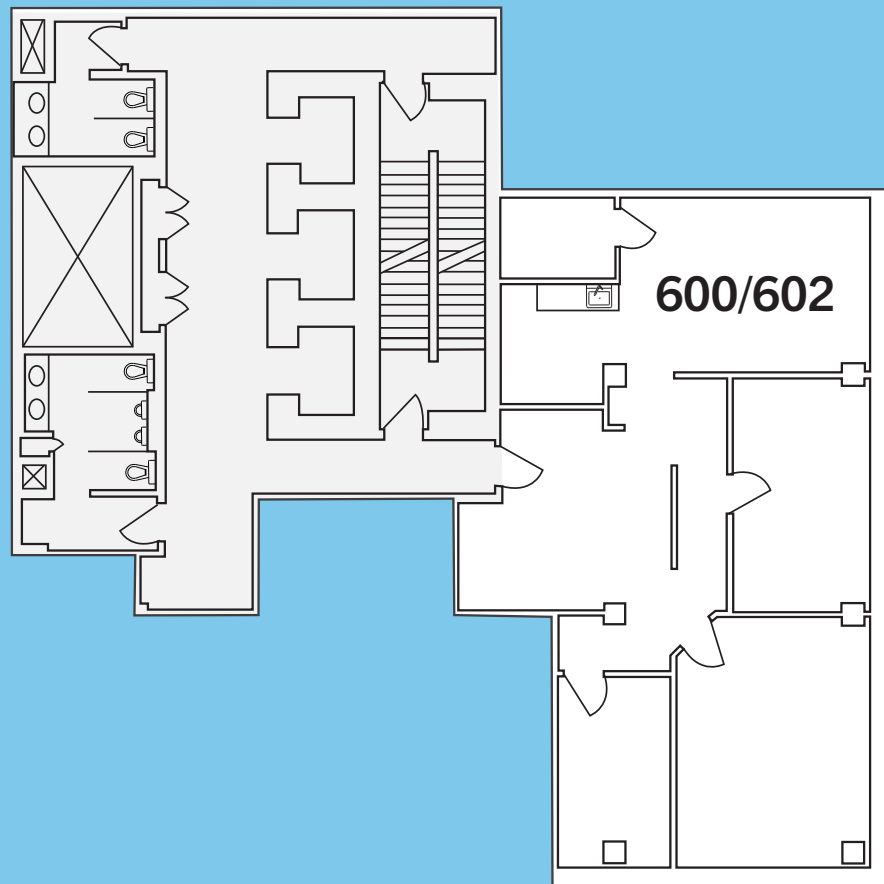
5TH FLOOR
SUITE 500 | 7,918 SF AVAILABLE IMMEDIATELY



ROYAL BANK BUILDING

FOR LEASE | 10117 JASPER AVENUE, EDMONTON

LEASED

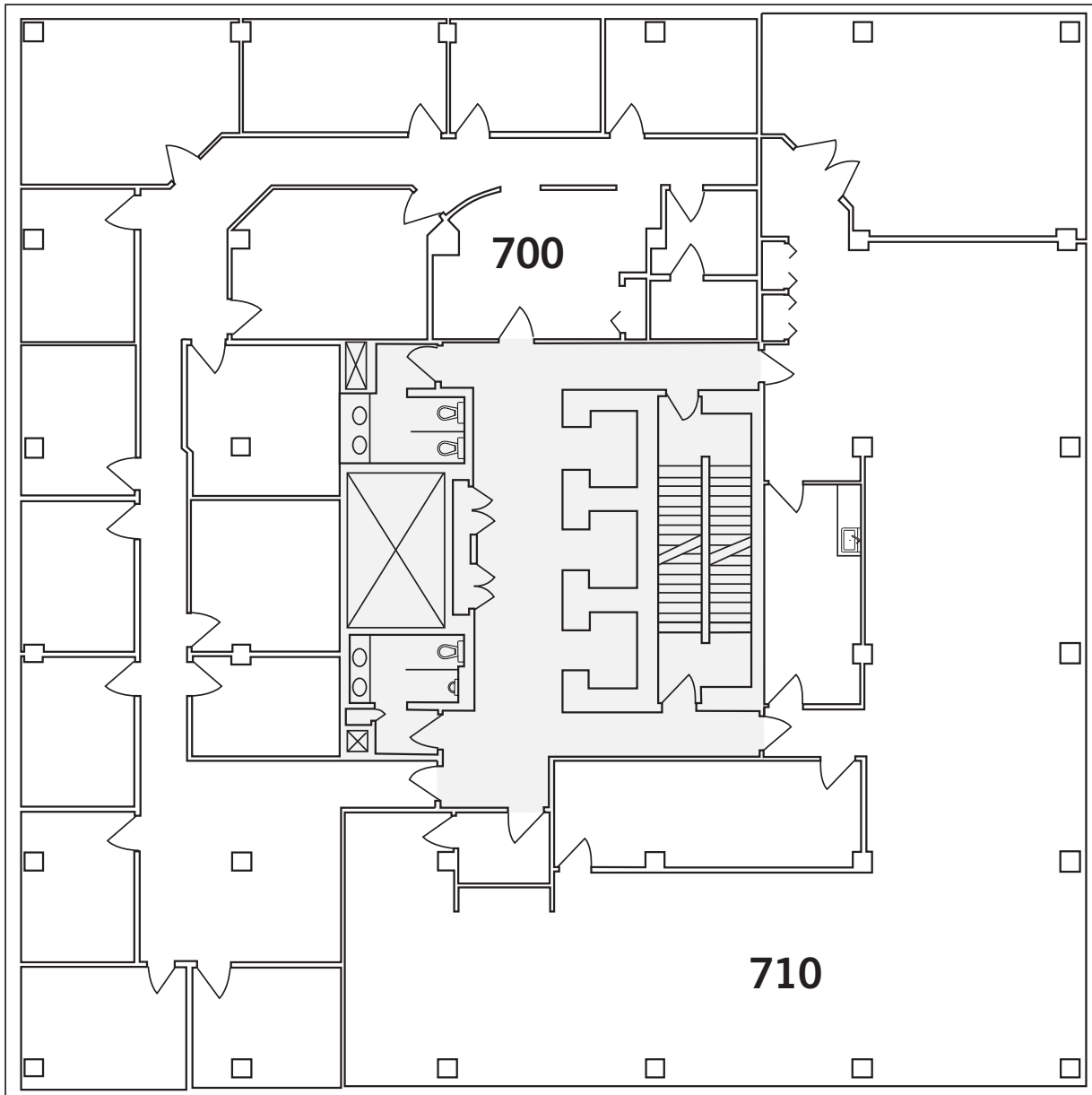


6TH FLOOR
SUITE 600/602 | 1,400 SF AVAILABLE IMMEDIATELY



ROYAL BANK BUILDING

FOR LEASE | 10117 JASPER AVENUE, EDMONTON



7TH FLOOR

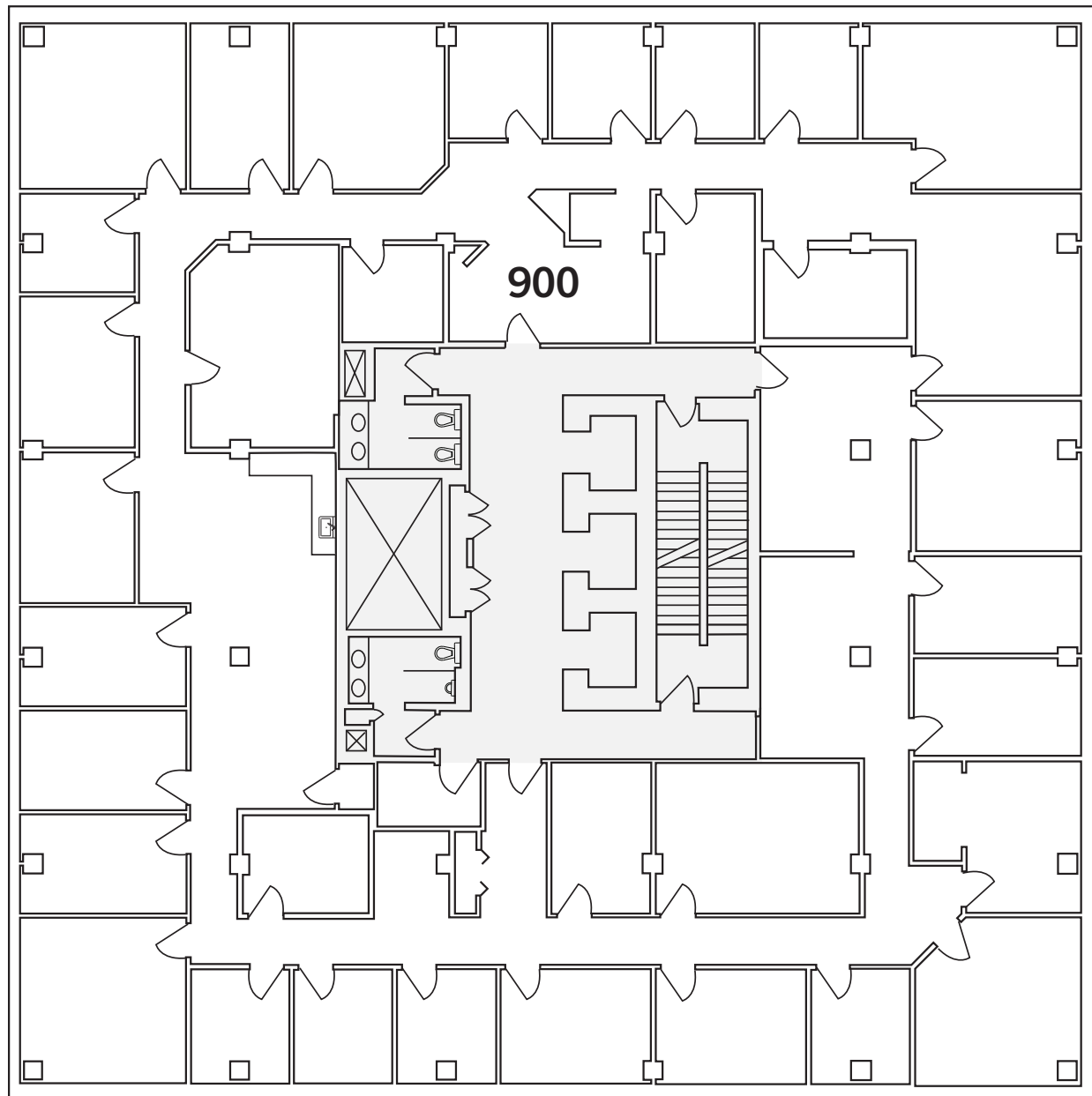
SUITE 710 | 3,873 SF AVAILABLE IMMEDIATELY

SUITE 700 | 4,045 SF AVAILABLE IMMEDIATELY



ROYAL BANK BUILDING

FOR LEASE | 10117 JASPER AVENUE, EDMONTON



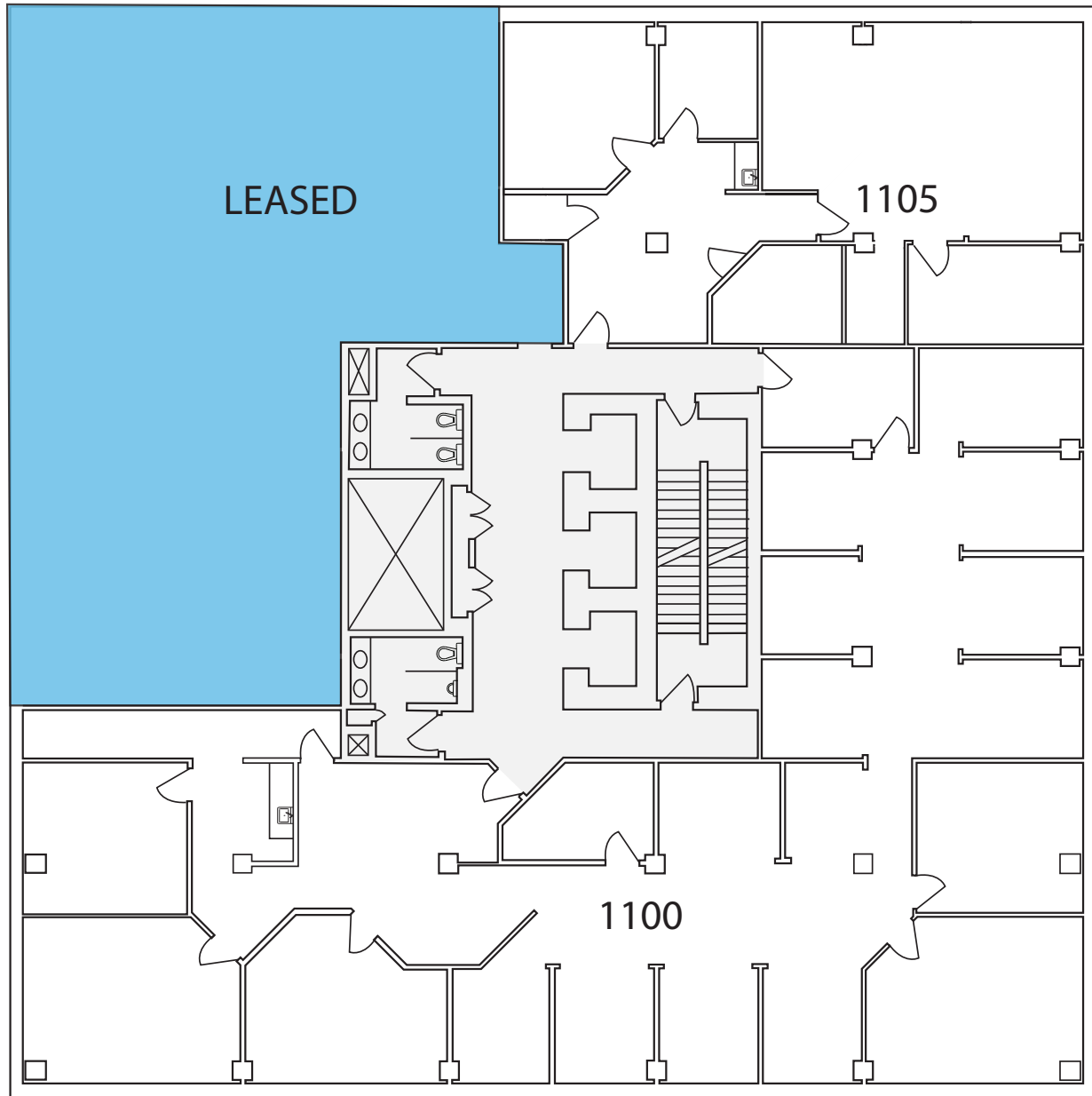
9TH FLOOR

SUITE 900 | 7,918 SF AVAILABLE IMMEDIATELY



ROYAL BANK BUILDING

FOR LEASE | 10117 JASPER AVENUE, EDMONTON



11TH FLOOR

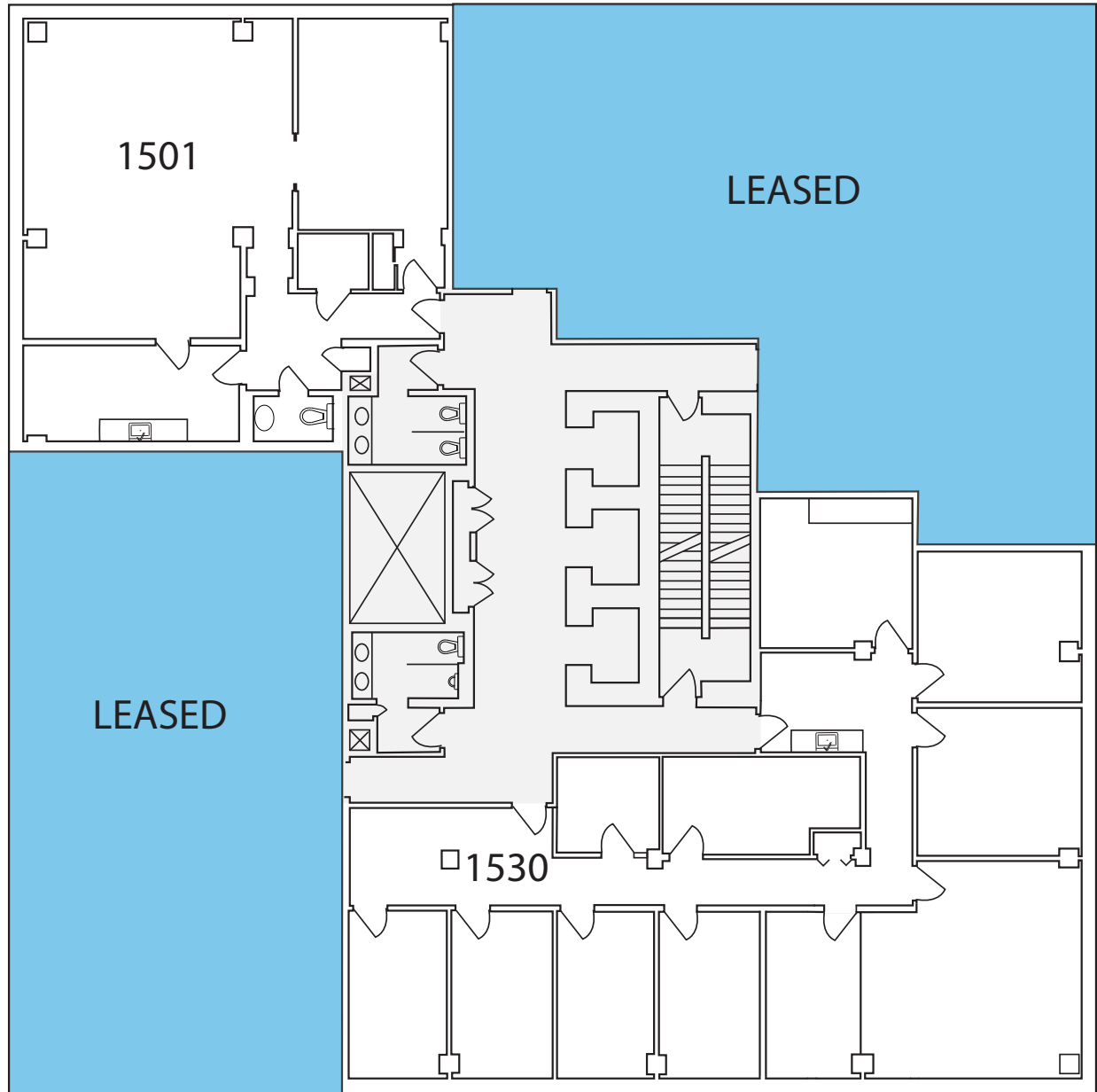
SUITE 1100 | 4,097 SF AVAILABLE IMMEDIATELY

SUITE 1105 | 1,512 SF AVAILABLE IMMEDIATELY



ROYAL BANK BUILDING

FOR LEASE | 10117 JASPER AVENUE, EDMONTON



15TH FLOOR

SUITE 1530 | 2,555 SF AVAILABLE IMMEDIATELY

SUITE 1501 | 1,458 SF AVAILABLE IMMEDIATELY

