

EDMONTON, ALBERTA

VIEW ONLINE 

ANTHONY HENDAY

YELLOWHEAD HWY



# Aurum Energy Park

## WHERE THE FUTURE IS BUILDING

**FOR SALE** | 13130 25 Street NE, Edmonton | AB

### 4.27 Acres of IB Zoned Land within Aurum Energy Park

Asking Price:

**\$550,000**  
Per Acre

- Only 20 minutes from Edmonton's city centre and excellent access to all major transportation routes via Yellowhead Trail and Anthony Henday Drive
- Estimated completion of Aurum Road between 17 Street and 9 Street which provides superior access to Anthony Henday Ring Road is Fall 2019
- Close to Alberta's Industrial Heartland and high load corridor (access via Highway 21)
- Aurum Energy Park is home to companies including WorleyParsonsCord, Gibson Energy, Saipem, PCL Construction, Mammoet and numerous others

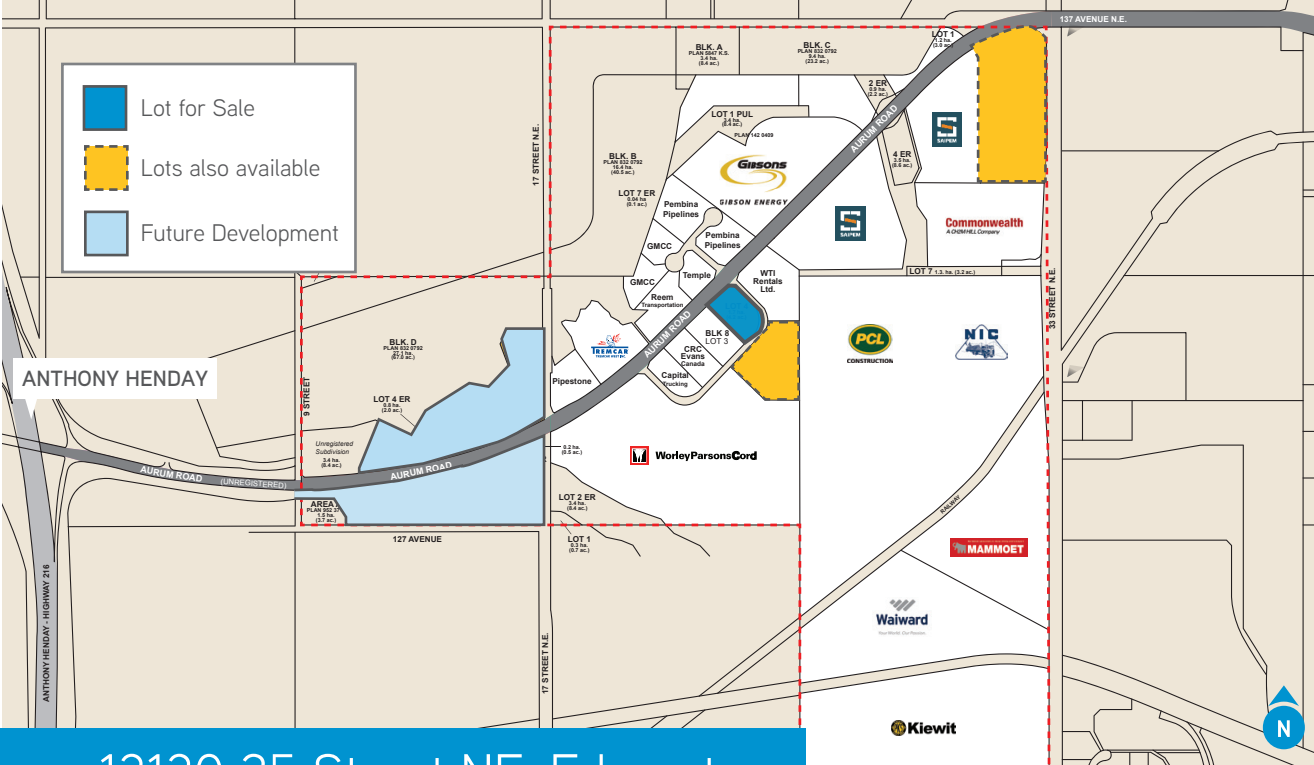


This document/email has been prepared by Colliers International for advertising and general information only. Colliers International makes no guarantees, representations or warranties of any kind, expressed or implied, regarding the information including, but not limited to, warranties of content, accuracy and reliability. Any interested party should undertake their own inquiries as to the accuracy of the information. Colliers International excludes unequivocally all inferred or implied terms, conditions and warranties arising out of this document and excludes all liability for loss and damages arising there from. Colliers International is a worldwide affiliation of independently owned and operated companies. This publication is the copyrighted property of Colliers International and/or its licensor(s). © 2019. All rights reserved. Colliers Macaulay Nicolls Inc., Brokerage.

**COLLIERS MACAULAY NICOLLS INC.**

2210 Manulife Place | 10180 101 St.  
Edmonton, AB | T5J 3S4  
P: +1 780 420 1585  
[www.collierscanada.com](http://www.collierscanada.com)





EDMONTON, ALBERTA

[VIEW ONLINE](#)

## Aurum Energy Park

### PROPERTY SPECIFICATIONS

**Total Land Area**  
± 4.27 Acres

**Services**  
Full Municipal Standard

**Zoning**  
IB- Business Industrial

**Highway Access**  
5 kms to Anthony Henday Yellowhead Hwy

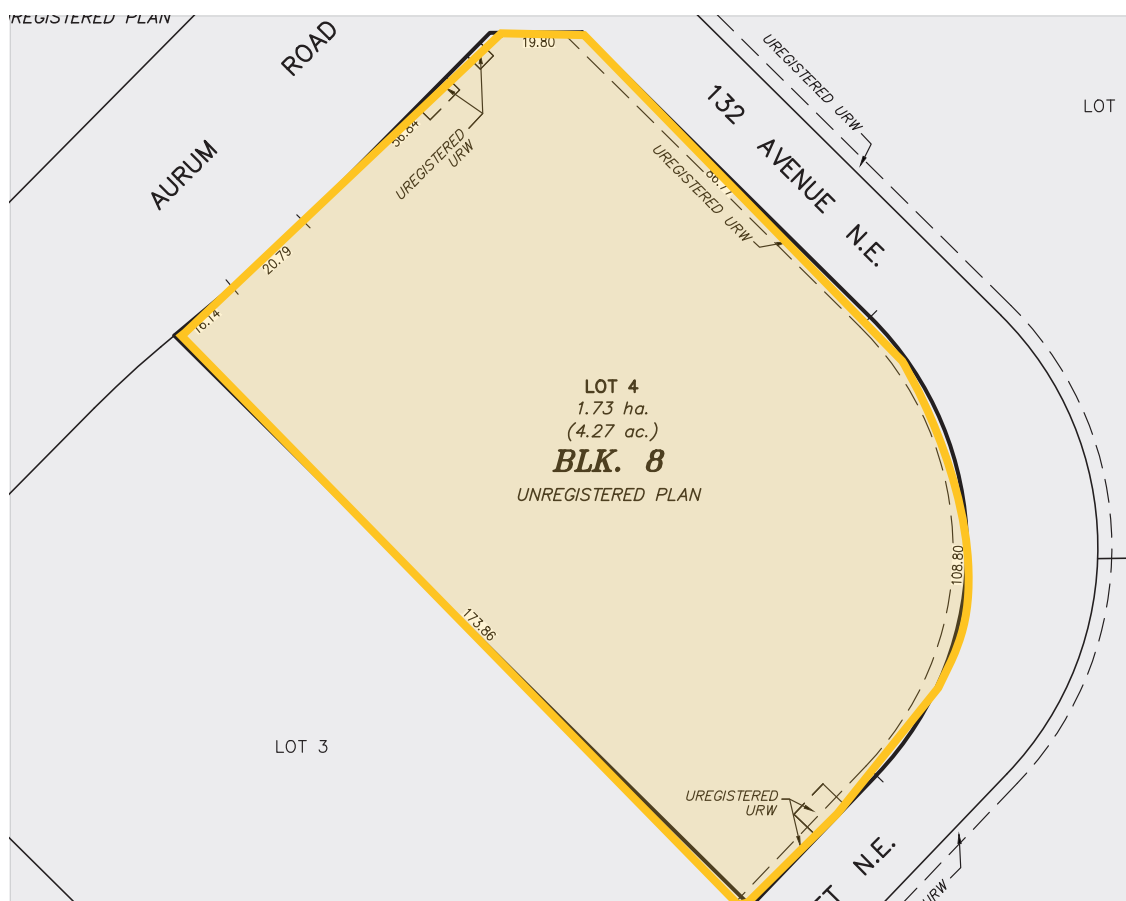
**Legal Desc.**  
Plan 1423235  
Block 8, Lot 4

**List Price**  
\$550,000  
per acre

**Available**  
Immediately

13130 25 Street NE, Edmonton

LOCATION MAP



SITE PLAN

Contact Us:

**Evelyn Stolk, CCIM**

Associate Vice President  
+1 780 969 3002  
evelyn.stolk@colliers.com

**Rod Connop**

Executive Vice President  
+1 780 969 2994  
rod.connop@colliers.com

**Chris Muchena**

Associate Vice President  
+1 780 917 4160  
chris.muchena@colliers.com



Accelerating success.