

**For Lease**

Asking:  
**\$12.50**  
PSF

**Building Features**



Quick access  
to Hwy 404  
and 407



Dock Level  
1



Zoning  
M



Clear Height  
16'

# Available Immediately

## Industrial space for Lease

**51 Esna Park Drive Unit 1, Markham, ON**

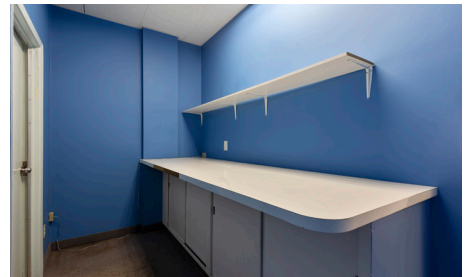
High Demand unit of 4,110 SF minutes away from Highway 404 and 407 on busy Esna Park Drive.



[VIEW UNIT 1](#)

**Newton Leung**  
Senior Vice President  
Sales Representative  
+1 416 318 8056  
[Newton.Leung@colliers.com](mailto:Newton.Leung@colliers.com)

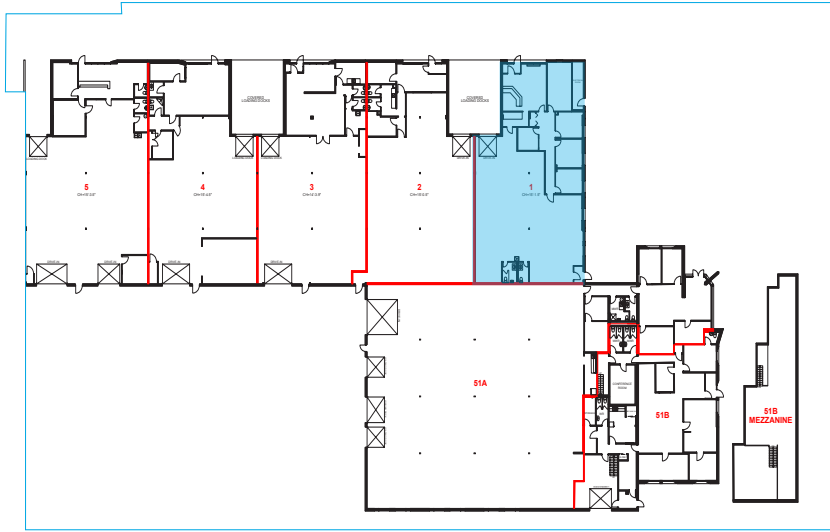
# Photos



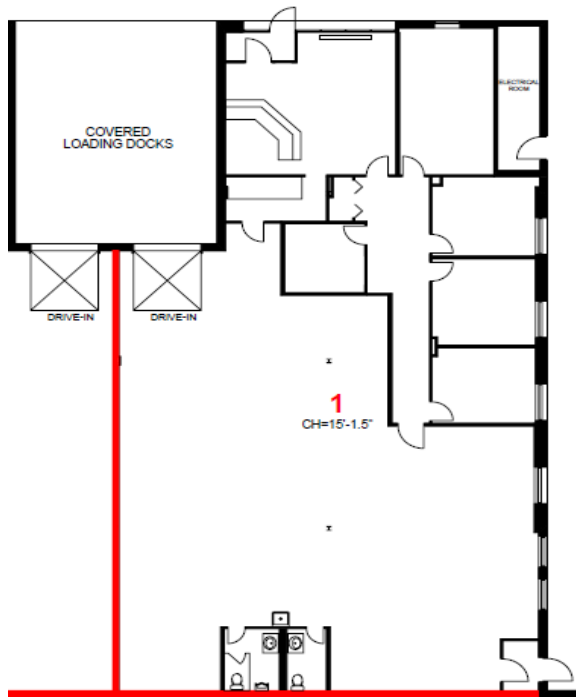
VIEW UNIT 1



# Floor Plan



Entire Building Floor Plan



Unit 1 Floor Plan

## Features

- Additional Rent \$ 4.28 PSF
- Excellent access to Highways
- Unit has office space with rear warehouse area
- Truck level shipping
- Outside surface parking
- Office Area 35%, Industrial area 65%
- Net Rent to escalate each year

4,110  
square feet available

**Newton Leung**  
Senior Vice President  
Sales Representative  
+1 416 318 8056  
Newton.Leung@colliers.com

Colliers International  
245 Yorkland Blvd, Suite 200  
Toronto, ON | M2J 1R1  
+1 416 777 2200  
collierscanada.com



Accelerating success.

[collierscanada.com](http://collierscanada.com)

Copyright © 2021 Colliers International. This document has been prepared by Colliers International for advertising and general information only. Colliers International makes no guarantees, representations or warranties of any kind, expressed or implied, regarding the information including, but not limited to, warranties of content, accuracy and reliability. Any interested party should undertake their own inquiries as to the accuracy of the information. Colliers International excludes unequivocally all inferred or implied terms, conditions and warranties arising out of this document and excludes all liability for loss and damages arising there from. This publication is the copyrighted property of Colliers international and/or its licensor(s). **Colliers Macaulay Nicolls Inc., Brokerage.**