

Endeavour
House
Shaftesbury
Avenue
WC2

Endeavour House is a prominent office building located in the heart of London's vibrant West End.



Generous Reception

The generous building reception area provides an excellent first impression, containing a manned reception desk and client waiting area. The office floors are accessed via 3 x 12 person passenger lifts.

1. Reception
2. Second Floor



Newly Refurbished

The first and second floors have been refurbished by the Landlord to provide Grade A office space.

The available space offers efficient, bright accommodation, with exceptional facilities.

Grade A Specification

- Newly refurbished
- Four pipe fan coil air-conditioning
- Raised floor
- New metal tile suspended ceiling
- New LED lighting
- 3 x 12 person passenger lifts
- Newly refurbished WCs
- New shower facilities
- 5 parking spaces
- New bicycle storage and locker facility
- 24 hour security
- Loading bay
- EPC rating C (63)
- 1:10 sq m occupancy ratio



3. Reception
4. View from second floor



1. Reception lifts
2. New bicycle racks and locker room
3. Bathrooms



Creature comforts

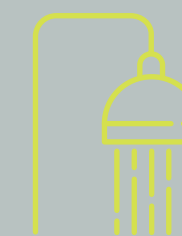
Endeavour House caters for all your needs with private car parking, ample secure bike storage and new changing facilities with 6 shower cubicles.



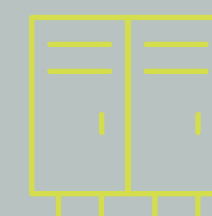
5
car parking
spaces



38
bike racks

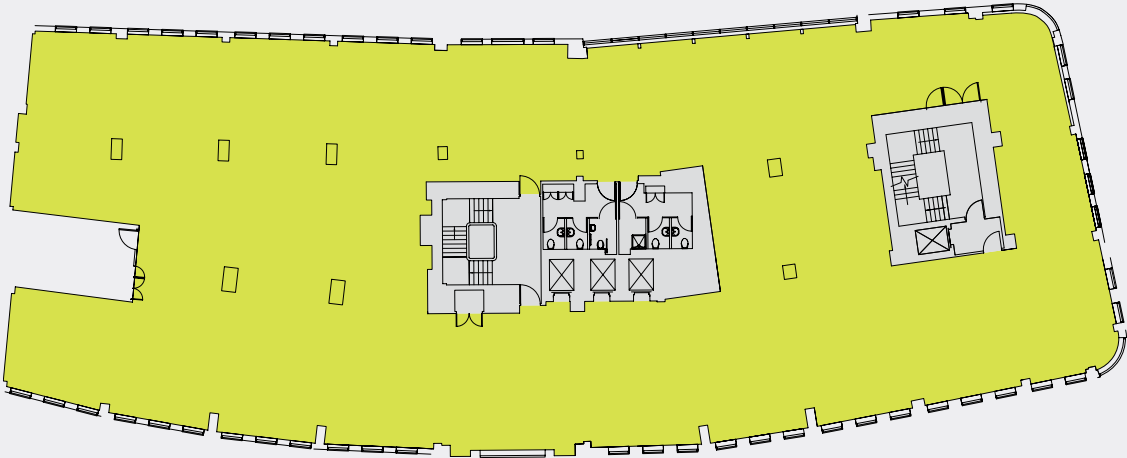


6
new showers



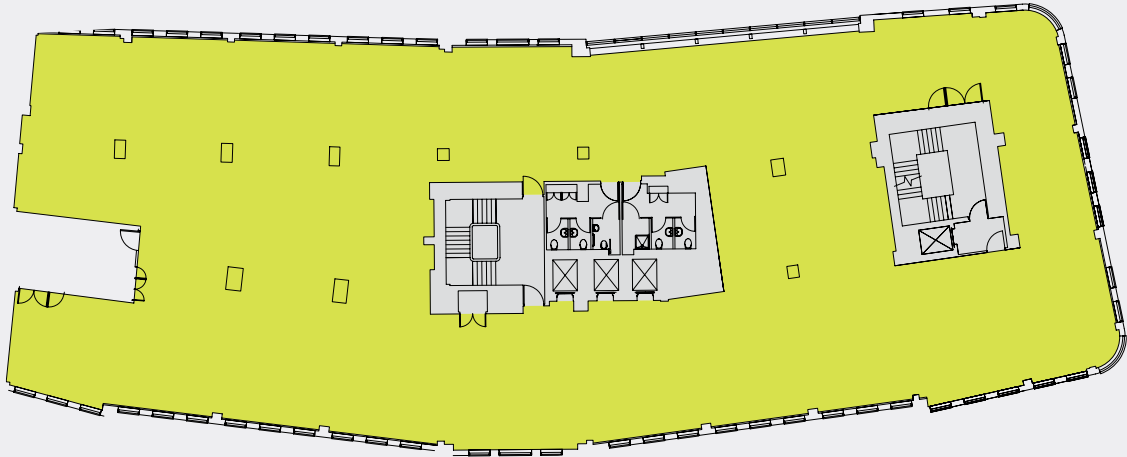
42
lockers

First Floor
11,590 sq ft / 1,077 sq m



Shaftesbury Avenue

Second Floor
11,239 sq ft / 1,044 sq m

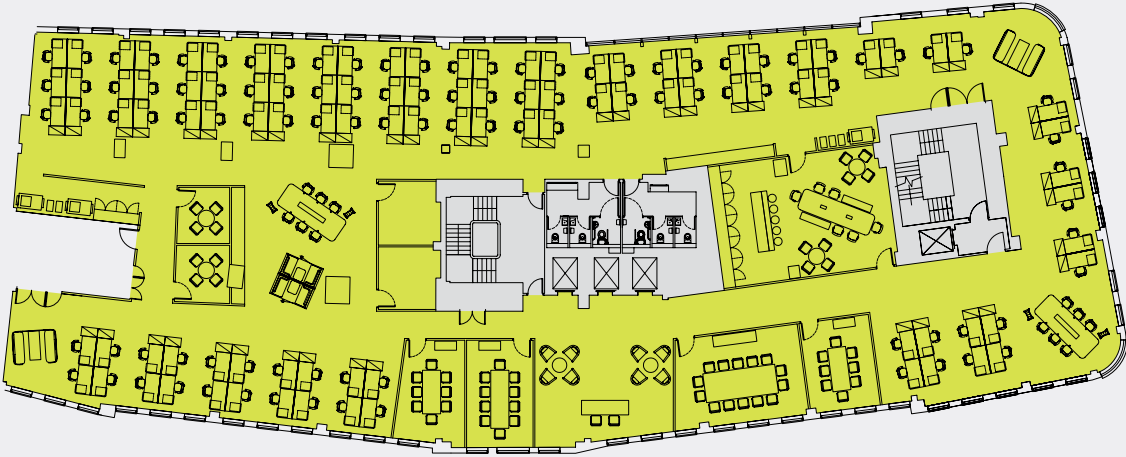


Shaftesbury Avenue

Floor plans are not to scale.
For indicative purposes only.

Key:
● Office
● Core

Typical Floor



Shaftesbury Avenue

Reception	1	Teapoint / Breakout	1	Open-plan Desk	102
14-Person Meeting Room	1	Copy Point	2	Receptionist	2
10-Person Meeting Room	1	Comms	1		
8-Person Meeting Room	2	Post & Store	1	TOTAL HEADCOUNT	104
4-Person Meeting Room	2			(approx 10 sq m per person)	
Quiet Booth	2				
Informal Meeting Area	2				

Typical Floor



Shaftesbury Avenue

Reception	1	Teapoint / Breakout	1	Open-plan Desk	84
14-Person Meeting Room	1	Coffee Point	1	Touchdown	15
10-Person Meeting Room	1	Copy Point	2	Receptionist	2
8-Person Meeting Room	2	Comms	1		
Quiet Booth	2	Post & Store	1	TOTAL HEADCOUNT	101
Informal Meeting Area	2			(approx 11sqm per person)	

Floor plans are not to scale.
For indicative purposes only.

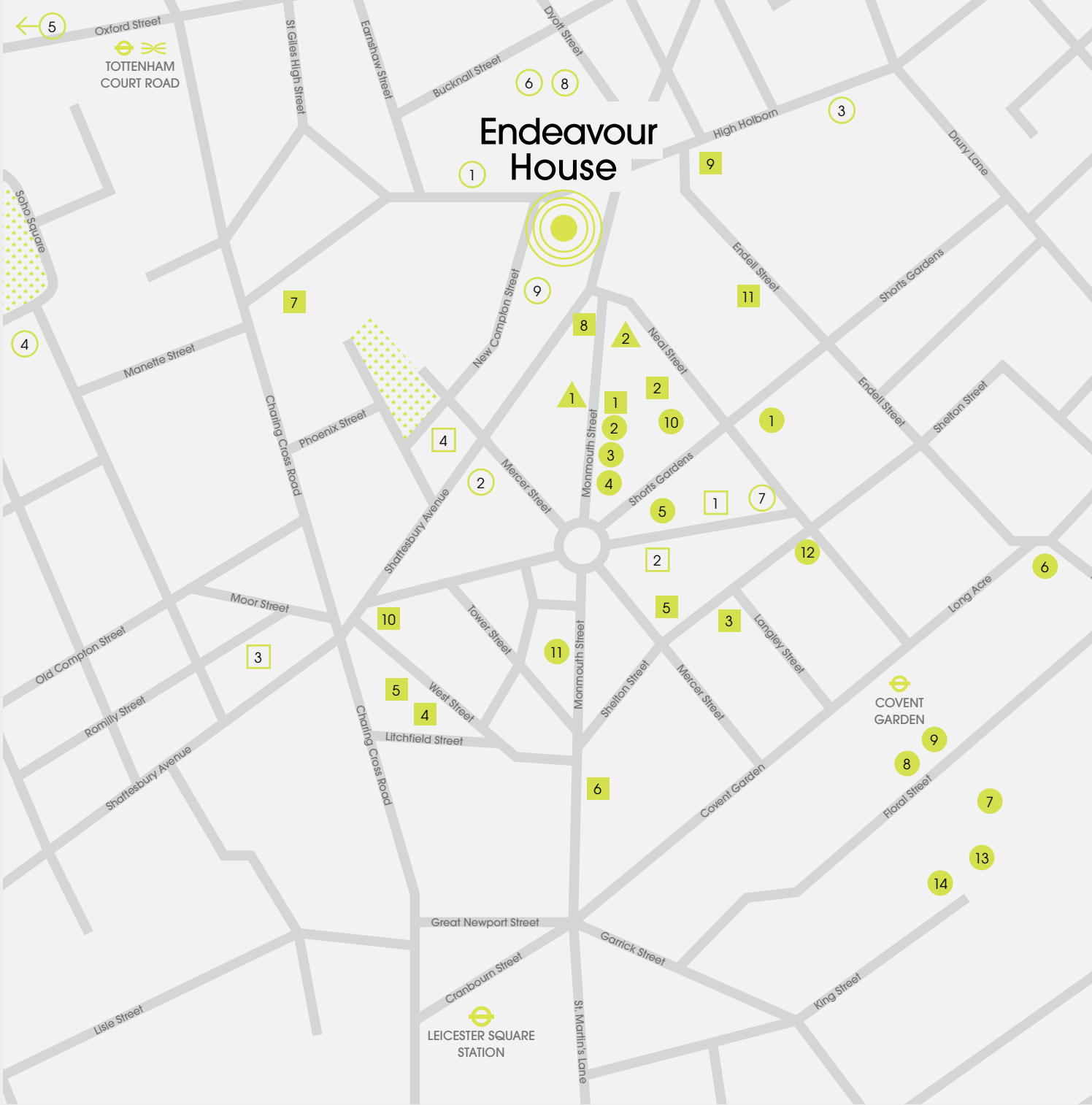
Key:
● Office
● Core

Exceptional Location

The building is exceptionally located on the junction of Shaftesbury Avenue, High Holborn and St Giles High Street, overlooking the landmark Central St Giles mixed use development. The shops, restaurants and theatres of Covent Garden are within close proximity.



1. Flat Iron
2. Burberry
3. Fresh



Local Amenities & Occupiers

Restaurant & Cafès

- 1 Monmouth Coffee
- 2 Wild Food
- 3 Hawksmoor
- 4 The Ivy
- 5 L'Atelier de Joel Robuchon
- 6 Dishoom
- 7 Flat Iron
- 8 Hotel Chocolat
- 9 The CraftBeer Co.
- 10 Polpo
- 11 I Love Nata

Hotels

- 1 Covent Garden Hotel
- 2 Seven Dials Hotel

Retail

- 1 Pop Boutique
- 2 Kiehl's
- 3 Orla Kiely
- 4 Wolsey
- 5 Fred Perry
- 6 All Saints
- 7 Karen Millen
- 8 Agnès B
- 9 Paul Smith
- 10 Neals Yard
- 11 Le Labo
- 12 Camper
- 13 Apple
- 14 Burberry

Leisure

- 1 Donmar Warehouse
- 2 Cambridge Theatre
- 3 Palace Theatre
- 4 Odeon

Occupiers

- 1 Mindshare
- 2 Hogarth Worldwide
- 3 Booking.com
- 4 Palantir
- 5 Facebook
- 6 Google
- 7 Red Bull
- 8 NBC Universal
- 9 NBA

Centre of Connectivity

Excellent connections are close by with both Tottenham Court Road (Central & Northern lines) and Covent Garden (Piccadilly line) London Underground stations within a few minutes walk.

From 2019 the high speed railway Crossrail interchange at Tottenham Court Road will be operational, revolutionising travel across the capital. It will connect the City, Canary Wharf, the West End and Heathrow Airport to commuter areas both east and west of London.



- 1. Tottenham Court Road Station
- 2. Seven Dials
- 3. Hawksmoor
- 4. Covent Garden

Only 3 mins walk away, the new public square at the base of Centre Point will have station entrances and be lined with contemporary cafés and restaurants, while London’s newest cinema and theatre complexes are soon to join the neighbourhood.

Travel times from Tottenham Court Road

Northern Line	Minutes
Leicester Square	1
Charing Cross	2
Warren Street	3
Embankment	4
Euston	4
Waterloo	5

Central Line	Minutes
Oxford Circus	1
Holborn	2
Bond Street	3
Bank	7
Liverpool Street	9

Travel times from Covent Garden

Piccadilly Line	Minutes
Leicester Square	1
Holborn	2
Russell Square	3
Piccadilly Circus	3
Green Park	4
King’s Cross	6
St Pancras International	6
South Kensington	10

Elizabeth Line Map 2018



Tube times sourced from tfl.gov.uk
Crossrail times sourced from crossrail.co.uk





Contact

BNP Paribas Real Estate

Alex Walters
020 7318 5043
alex.walters@realestate.bnpparibas

Percy Clarke
020 7318 5019
percy.clarke@realestate.bnpparibas

Sarah Brisbane
020 7318 4621
sarah.brisbane@realestate.bnpparibas

realestate.bnpparibas.co.uk

Colliers International

Tom Tregoning
020 7487 1813
tom.tregoning@colliers.com

Katrina Love
020 7487 1722
katrina.love@colliers.com

Willem Janssen
020 7487 1707
willem.janssen@colliers.com

collierslondon.com

endeavourhousewc2.com

Misrepresentation act 1967: Strutt & Parker LLP & Colliers International for themselves and for the lessor(s) of this property whose agents they are, give notice that:
1. These particulars do not constitute any part of an offer or contract. 2. None of the statements contained in these particulars are to be relied on as statements or representations of fact. 3. Any intending lessee must satisfy himself by inspection or otherwise as to the correctness of each of the statements contained in these particulars. 4. The lessor(s) do not make or give and Strutt & Parker LLP & Colliers International nor any person in their employment has any authority to make or give, any representation or warranty whatever in relation to this property. October 2018.

Designed by Stepladder. stepladderuk.com

