



THE FIFTH FLOOR DESIGN CENTRE EAST

The newest development in
Design Centre, Chelsea Harbour's
success story

design centre
LONDON



WELCOME TO DESIGN CENTRE, CHELSEA HARBOUR

*The iconic home to a world-class
community of creativity*

Design Centre, Chelsea Harbour is internationally acknowledged as one of the world's most important centres of creativity.

Since the foundation stones were laid in 1987 it has evolved with ambition and imagination. The impressive development of the iconic riverside building has, over time, given more businesses the opportunity to be a part of its vibrant success.

Today it is the award-winning home to more than 135 global headquarters and luxury showrooms, design practices, studios, galleries, commercial suites and offices.

And with more than 100k visits a year, the Design Centre is where the creative community comes for inspiration and to do great business.

Now Design Centre, Chelsea Harbour is proud to announce the next phase of its development.





THE FIFTH FLOOR

An exciting new opportunity

The Fifth Floor – a new phase of 15,000 sq ft – has been developed to meet demand from dynamic businesses that want to be a part of the Design Centre, Chelsea Harbour's creative network of success.

The Fifth Floor is located in Design Centre East, accessed immediately through the principal doors and via the extraordinarily impressive Design Avenue, with its cathedral height ceiling.

All those going to The Fifth Floor will be transported to this new space using a designated express lift.

A range of spaces are available, from 500 sq ft to 1,800 sq ft with the facility for flexibility if your business needs a greater accommodation.



THE FIFTH FLOOR

Enjoy excellent services on site

From the moment of arrival, everything has been considered.

Design Centre, Chelsea Harbour has a superb restaurant and café on site, so whether you're planning lunch with a prospective client, or simply need a quick cappuccino or sandwich then everything is at hand.

The Design Restaurant and Dome Café are run by award winning Social Pantry. Both of these convivial spaces have a focus on delicious seasonal, produce-led food and drink.

Additionally, visit the Design Club, an exclusive members-only area where you can host a meeting or even arrange a presentation or drinks party.

The concierge service is there to greet and direct, supported by the excellent security and events teams, all of whom are happy to help with all your needs and make your business really work.





THE FIFTH FLOOR

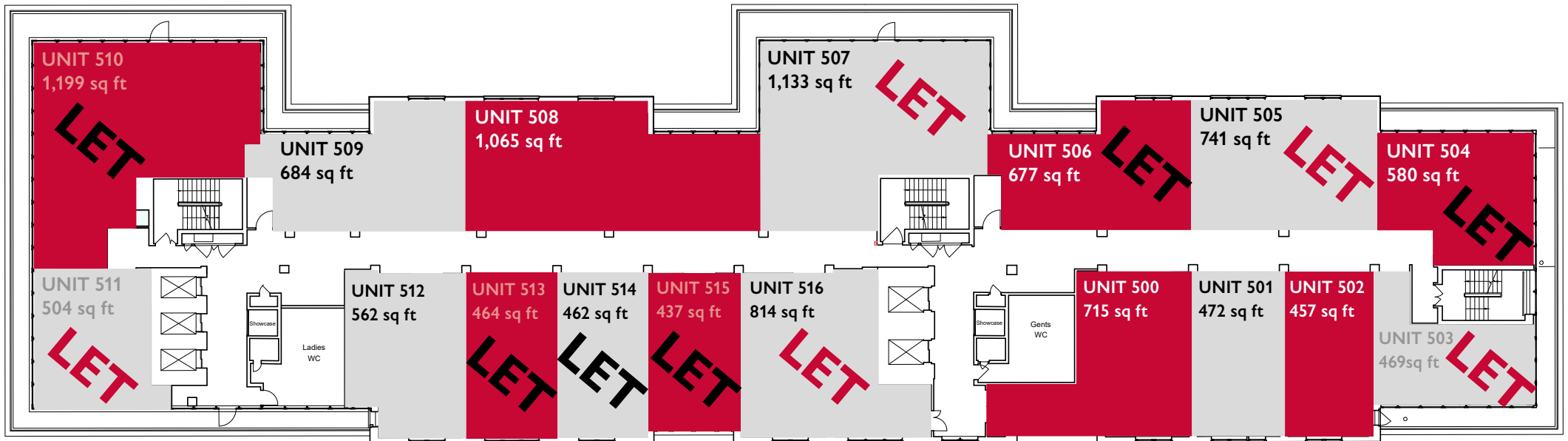
In great company

Design Centre, Chelsea Harbour is home to some of the greatest design names in the world. Global HQs, flagship showrooms, design practices, studios, galleries and office suites have been taken in Chelsea Harbour by companies across a wide spectrum of categories including interior design and decoration, architecture, fashion, art, marketing, advertising and beyond.

Make your company at home alongside brands like Ralph Lauren, Osborne & Little, Colefax and Fowler, Alidad, Martin Brudnizki Design Studio, Pierre Frey, The Rug Company, Porada, Julian Chichester, Ceccotti Collezioni, Donghia, Rubelli, Zuber, Forbes & Lomax, Hector Finch, and Savoir Beds.

THE FIFTH FLOOR

The Fifth Floor is made up of 17 units ranging from 450 sq ft to 1,133 sq ft. There is flexibility to reconfigure spaces to create more space for your business – whether you need a showroom, design practice, studio, gallery or an office suite.



UNIT	SQ FT
501	472
502	457
503 LET	469
504 LET	580
505 LET	741

UNIT	SQ FT
506 LET	677
507 LET	1,133
508	1,065
509	684
510 LET	1,199

UNIT	SQ FT
511 LET	504
512	562
513 LET	464
514 LET	462
515 LET	437
516 LET	814



THE FIFTH FLOOR

Flexible working space

Whether the space is used as a showroom, studio, design practice, gallery or office suite, The Fifth Floor offers newly rendered units that can be configured to need.

All units will be entered from principal, carpeted corridor.

Images used here give indicative examples of public spaces on other floors in Design Centre East.





Design Centre, Chelsea Harbour is easily accessible by multiple transport routes. There is on-site parking for more than 2,000 cars, plentiful taxis and it is quick to travel to all London mainline stations as well as Heathrow.

TRAVEL TIMES FROM IMPERIAL WHARF

Earl's Court	13 mins
Hyde Park Corner	27 mins
Kensington High Street	17 mins
Oxford Circus	29 mins
St Paul's	37 mins
Tottenham Court Road	31 mins
Vauxhall	18 mins
Waterloo	16 mins
Westminster	25 mins



THE FIFTH FLOOR
DESIGN CENTRE EAST



THE FIFTH FLOOR

The next step

FOR FURTHER INFORMATION AND
TO DISCUSS YOUR SPECIFICATIONS

Benjamin Stedman

+44 7804 539 391

benjamin.stedman@colliers.com



Olivia Hughes

+44 7732 823 391

olivia.hughes@colliers.com



Alan Purchase

Head of Commercial

alan.purchase@chelsea-harbour.co.uk

design centre
LONDON