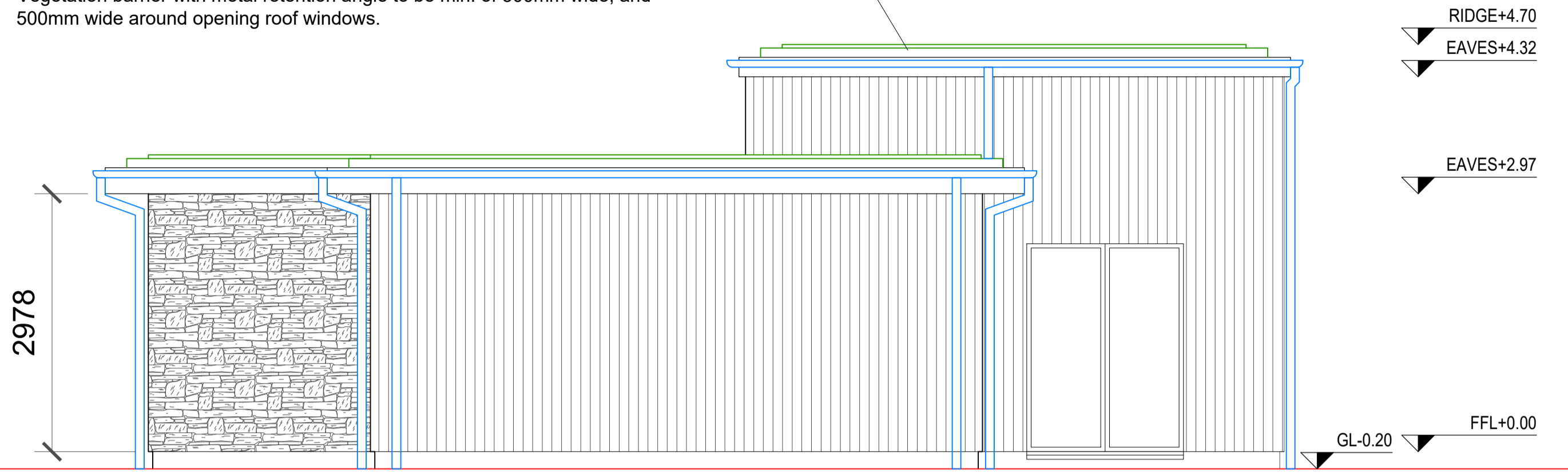
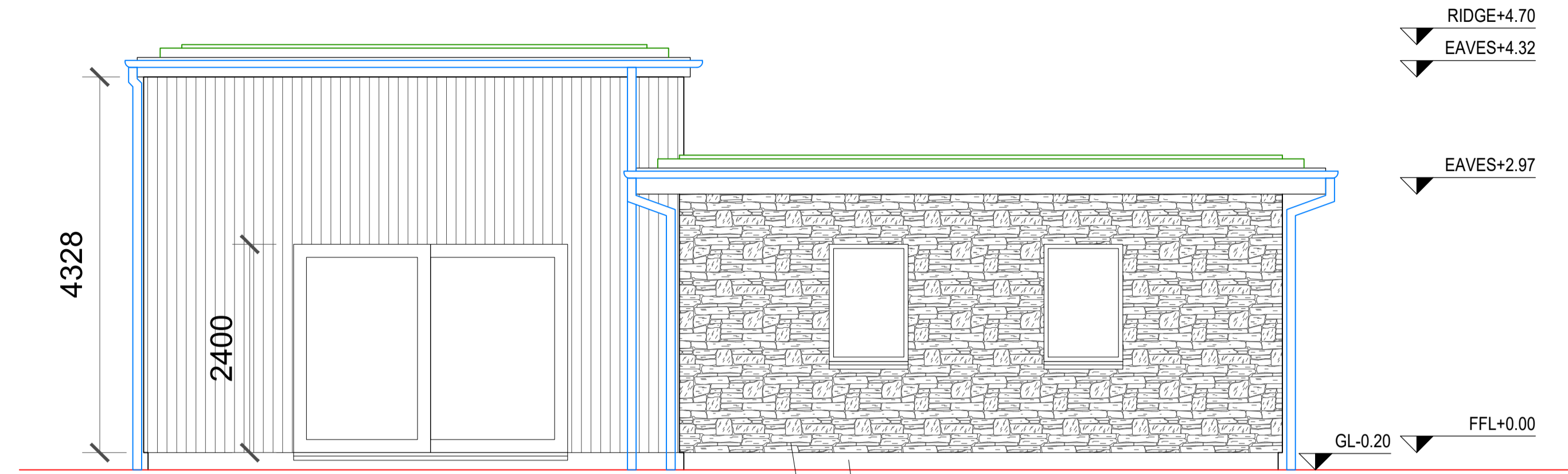


Selected extensive green roof system, on proprietary filter fleece layer, on proprietary drainage board, on protection and separation layer, on Soprema Sopratorch roof membrane (or similar approved), on 110mm Kingspan Thermataper TT44 tapered insulation (or similar approved), on 18mm WBP Plywood, on timber roofing joists to engineers detail, on 12.5 mm Gypsum plasterboard with a skim finish.

Vegetation barrier with metal retention angle to be min. of 300mm wide, and 500mm wide around opening roof windows.



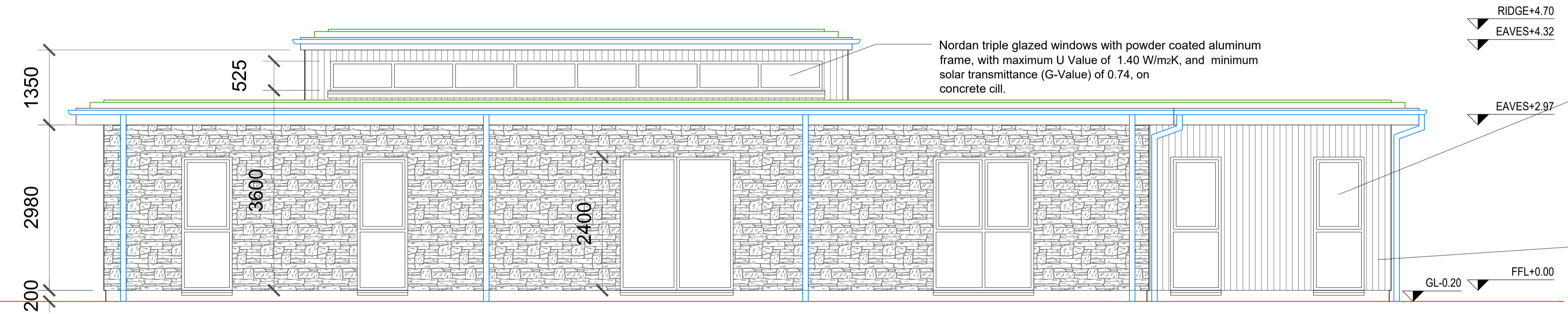
WEST ELEVATION  
SCALE 1:50



WEST ELEVATION  
SCALE 1:50

Selected render plinth

Selected stone cladding system, on 100mm concrete block external leaf with 40mm minimum air cavity and 110mm Kingspan Kooltherm K8 Plus partial fill cavity insulation board with "Vartry" cavity wall ties or similar approved with a cross sectional area of not more than 9mm<sup>2</sup>, on 100mm concrete block inner leaf with 12.5 mm Gypsum plasterboard with a skim finish.



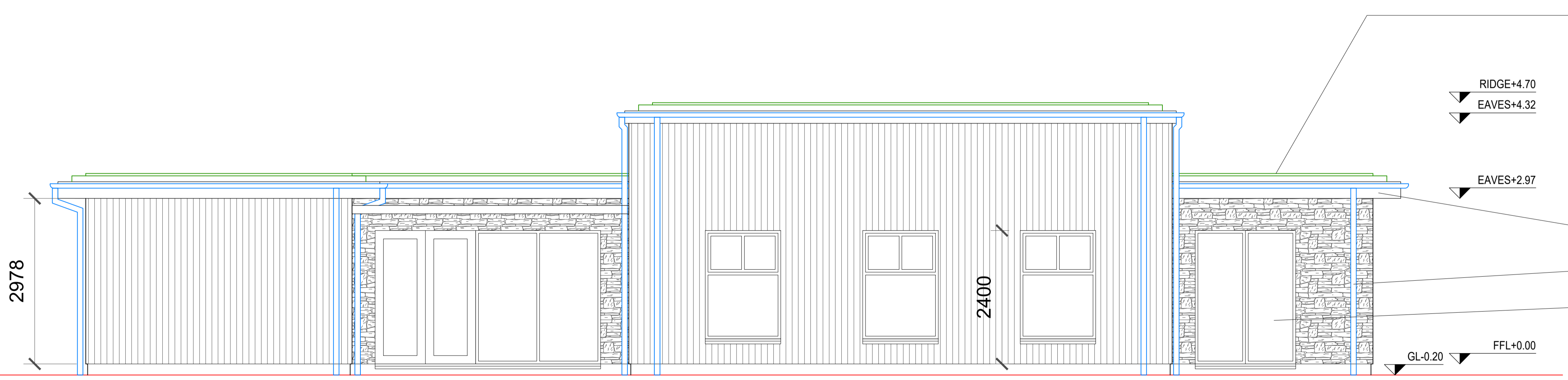
WEST ELEVATION  
SCALE 1:50

Nordan triple glazed windows with powder coated aluminum frame, with maximum U Value of 1.40 W/m<sup>2</sup>K, and minimum solar transmittance (G-Value) of 0.74, on concrete cill.

Nordan triple glazed windows with powder coated aluminum frame, with maximum U Value of 1.40 W/m<sup>2</sup>K, and minimum solar transmittance (G-Value) of 0.74, on powder coated aluminum cill.

Note: All windows must be certified to EN10077 or EN12567; or have an NSAI WEP, BFRC or British Kitemark window performance certificate.

Selected accoya timber cladding system, on 100mm concrete block external leaf with 40mm minimum air cavity and 110mm Kingspan Kooltherm K8 Plus partial fill cavity insulation board with "Vartry" cavity wall ties or similar approved with a cross sectional area of not more than 9mm<sup>2</sup>, on 100mm concrete block inner leaf with 12.5 mm Gypsum plasterboard with a skim finish.



WEST ELEVATION  
SCALE 1:50

Selected extensive green roof system, on proprietary filter fleece layer, on proprietary drainage board, on protection and separation layer, on Soprema Sopratorch roof membrane (or similar approved), on 110mm Kingspan Thermataper TT44 tapered insulation (or similar approved), on 18mm WBP Plywood, on timber roofing joists to engineers detail, on 12.5 mm Gypsum plasterboard with a skim finish.

Vegetation barrier with metal retention angle to be min. of 300mm wide, and 500mm wide around opening roof windows.

Rigid uPVC fascia, soffit and barge boards to selected colour.

Aluminium rainwater goods to selected colour.

Nordan double glazed doors with powder coated aluminum frame, with maximum U Value of 1.40 W/m<sup>2</sup>K, and minimum solar transmittance (G-Value) of 0.74, on powder coated aluminum cill.

**FOR CONSTRUCTION**

PROJECT TITLE: PROPOSED DEVELOPMENT at SWISS COTTAGE, ENNISKERRY, COUNTY WICKLOW

PROJECT No.: IFA-2403

DATE: 17.06.2024

SCALE: 1:50

DRAWN BY: IF

DRAWING TITLE: PROPOSED ELEVATIONS

DRAWING No.: pA[e]-001

REV: -

**IFA**  
IGMAR FERREIRA ARCHITECTS  
1 BLACKTHORN HILL  
TICKNOCK HILL  
SANDYFORD  
DUBLIN 18  
TEL: +353 8752 77 770  
email: ifa@ifa.ie