

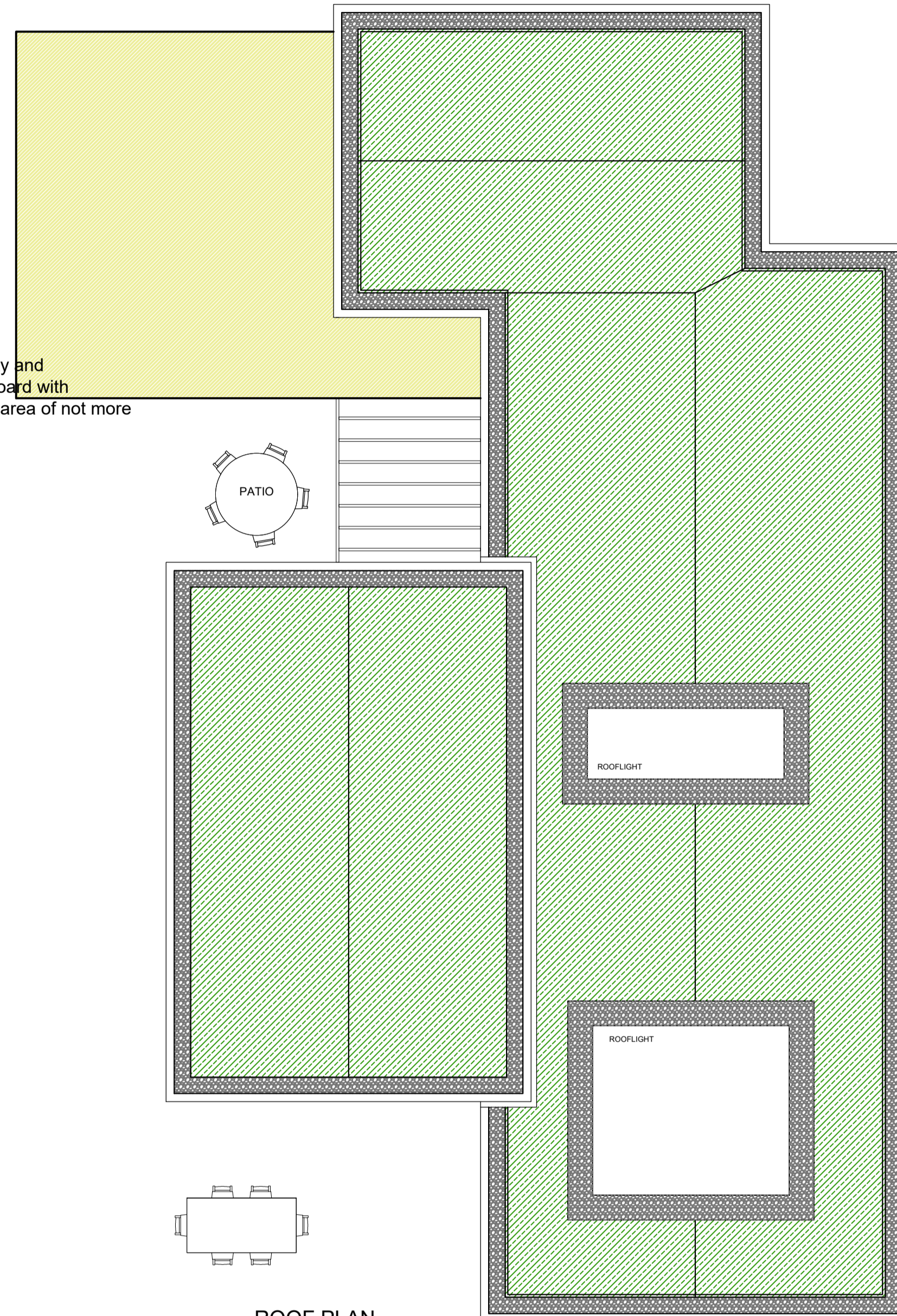
40 MSQ EXTENSION IN YELLOW

Selected accoya timber cladding system, on 100mm concrete block external leaf with 40mm minimum air cavity and 110mm Kingspan Kooltherm K8 Plus partial fill cavity insulation board with "Vartry" cavity wall ties or similar approved with a cross sectional area of not more than 9mm<sup>2</sup>, on 100mm concrete block inner leaf with 12.5 mm Gypsum plasterboard with a skim finish.

Selected stone cladding system, on 100mm concrete block external leaf with 40mm minimum air cavity and 110mm Kingspan Kooltherm K8 Plus partial fill cavity insulation board with "Vartry" cavity wall ties or similar approved with a cross sectional area of not more than 9mm<sup>2</sup>, on 100mm concrete block inner leaf with 12.5 mm Gypsum plasterboard with a skim finish.

Nordan double glazed windows with powder coated aluminum frame, with maximum U Value of 1.40 W/m<sup>2</sup>K, and minimum solar transmittance (G-Value) of 0.74, on powder coated aluminum sill.

Note: All windows must be certified to EN10077 or EN12567; or have an NSAI WEP, BFRC or British Kitemark window performance certificate.



ROOF PLAN  
SCALE 1:75

**GROUND FLOOR PLAN - 227 MSQ**  
SCALE 1:50

PROJECT TITLE:	PROPOSED DEVELOPMENT at SWISS COTTAGE, ENNISKERRY, COUNTY WICKLOW
PROJECT No.:	IFA-2403
DATE:	17.06.2024
SCALE:	1:50 & 1:75
DRAWN BY:	IF
DRAWING TITLE:	PROPOSED FLOOR PLANS SITE B

DRAWING No.:	pA[00]-001	REV:	-
--------------	------------	------	---

**IFA**  
IGMAR FERREIRA ARCHITECTS

IGMAR FERREIRA ARCHITECTS  
1 BLACKTHORN HILL  
TICKNOCK HILL  
SANDYFORD  
DUBLIN 18  
TEL: +353 8762 77 770  
email: ifa@ifa.ie