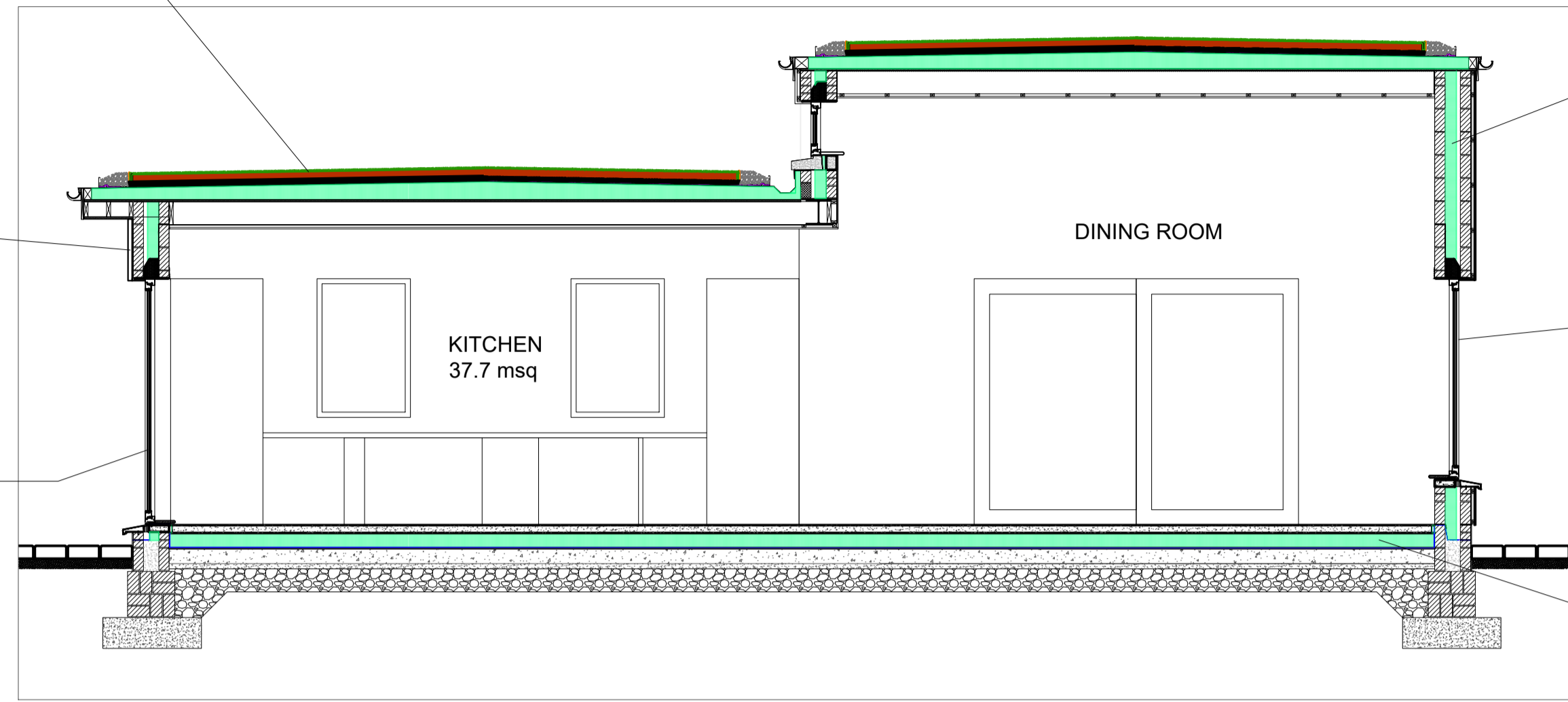


Selected extensive green roof system, on proprietary filter fleece layer, on proprietary drainage board, on protection and separation layer, on Soprema Sopratorch roof membrane (or similar approved), on 110mm Kingspan Thermataper TT44 tapered insulation (or similar approved), on 18mm WBP Plywood, on timber roof joists to engineers detail, on 12.5 mm Gypsum plasterboard with a skim finish.

Vegetation barrier with metal retention angle to be min. of 300mm wide, and 500mm wide around opening roof windows.

Selected stone cladding system, on 100mm concrete block external leaf with 40mm minimum air cavity and 110mm Kingspan Kooltherm K8 Plus partial fill cavity insulation board with "Vartry" cavity wall ties or similar approved with a cross sectional area of not more than 9mm², on 100mm concrete block inner leaf with 12.5 mm Gypsum plasterboard with a skim finish.

Nordan double glazed doors with powder coated aluminum frame, with maximum U Value of 1.40 W/m²K, and minimum solar transmittance (G-Value) of 0.74, on powder coated aluminum sill.



SECTION AA
SCALE 1:50

Selected accoya timber cladding system, on 100mm concrete block external leaf with 40mm minimum air cavity and 110mm Kingspan Kooltherm K8 Plus partial fill cavity insulation board with "Vartry" cavity wall ties or similar approved with a cross sectional area of not more than 9mm², on 100mm concrete block inner leaf with 12.5 mm Gypsum plasterboard with a skim finish.

Nordan triple glazed windows with powder coated aluminum frame, with maximum U Value of 1.40 W/m²K, and minimum solar transmittance (G-Value) of 0.74, on powder coated aluminum sill.

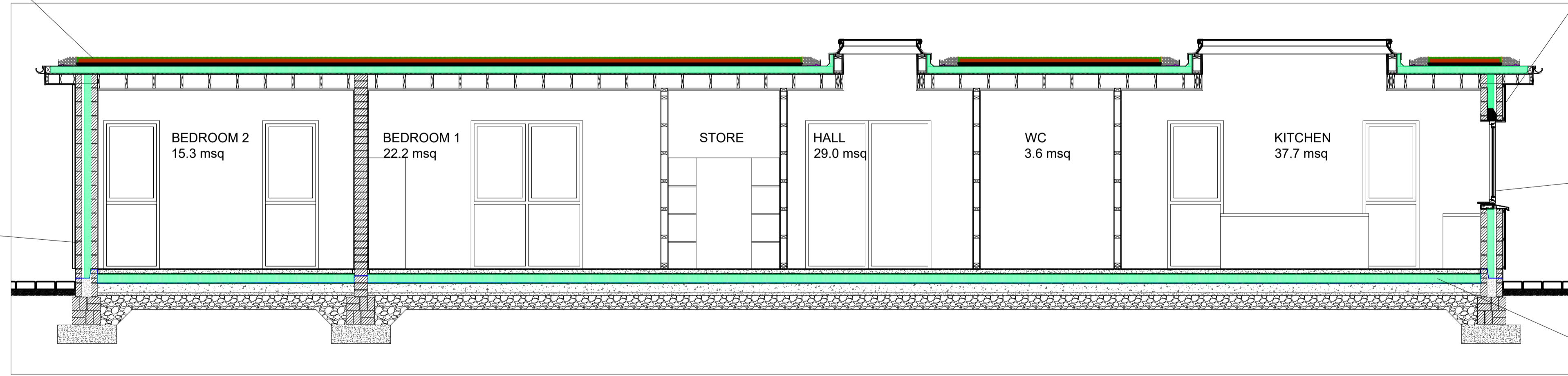
Note: All windows must be certified to EN10077 or EN12567; or have an NSAI WEP, BFRC or British Kitemark window performance certificate.

Underfloor heating with 75mm screed on separating layer on 150mm Kooltherm K3 insulation on Radon Barrier on 150 concrete slab on 225mm well compacted hardcore. Foundations to engineer's spec

Selected extensive green roof system, on proprietary filter fleece layer, on proprietary drainage board, on protection and separation layer, on Soprema Sopratorch roof membrane (or similar approved), on 110mm Kingspan Thermataper TT44 tapered insulation (or similar approved), on 18mm WBP Plywood, on timber roof joists to engineers detail, on 12.5 mm Gypsum plasterboard with a skim finish.

Vegetation barrier with metal retention angle to be min. of 300mm wide, and 500mm wide around opening roof windows.

Selected stone cladding system, on 100mm concrete block external leaf with 40mm minimum air cavity and 110mm Kingspan Kooltherm K8 Plus partial fill cavity insulation board with "Vartry" cavity wall ties or similar approved with a cross sectional area of not more than 9mm², on 100mm concrete block inner leaf with 12.5 mm Gypsum plasterboard with a skim finish.



SECTION BB
SCALE 1:50

Selected accoya timber cladding system, on 100mm concrete block external leaf with 40mm minimum air cavity and 110mm Kingspan Kooltherm K8 Plus partial fill cavity insulation board with "Vartry" cavity wall ties or similar approved with a cross sectional area of not more than 9mm², on 100mm concrete block inner leaf with 12.5 mm Gypsum plasterboard with a skim finish.

Nordan triple glazed windows with powder coated aluminum frame, with maximum U Value of 1.40 W/m²K, and minimum solar transmittance (G-Value) of 0.74, on powder coated aluminum sill.

Note: All windows must be certified to EN10077 or EN12567; or have an NSAI WEP, BFRC or British Kitemark window performance certificate.

Underfloor heating with 75mm screed on separating layer on 150mm Kooltherm K3 insulation on Radon Barrier on 150 concrete slab on 225mm well compacted hardcore. Foundations to engineer's spec

FOR CONSTRUCTION

PROJECT TITLE:	PROPOSED DEVELOPMENT at SWISS COTTAGE, ENNISKERRY, COUNTY WICKLOW
PROJECT No.:	IFA-2403
DATE:	17.06.2024
SCALE:	1:50
DRAWN BY:	IF
DRAWING TITLE:	PROPOSED SECTIONS

DRAWING No. : pA[sec]-001 REV : -