

±4,478 RSF > OFFICE/RETAIL SPACE

1010 Gervais Street

COLUMBIA, SC 29201

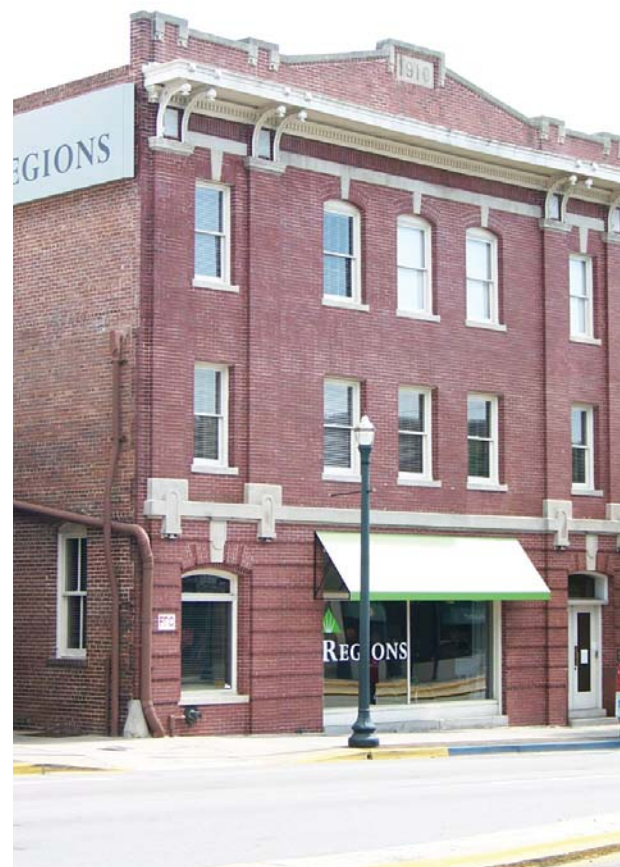


Congaree Vista > Office Space

1010 Gervais is located in the heart of the Vista, with Gervais Street frontage. Gervais Street businesses include Hyatt Place, Hampton Inn, South State Bank, TD Ameritrade, Publix, Mellow Mushroom, Urban Outfitters, Starbucks and many more businesses, local boutiques and galleries. The property is within close proximity to the SC Statehouse grounds, University of South Carolina and Columbia's Central Business District.

Building Amenities

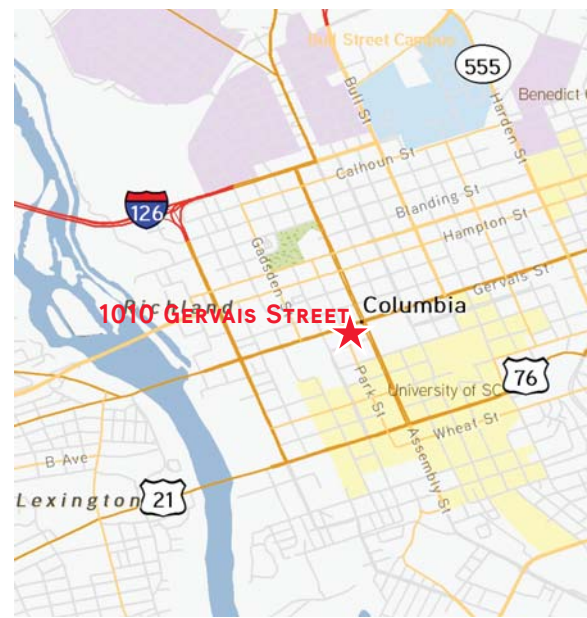
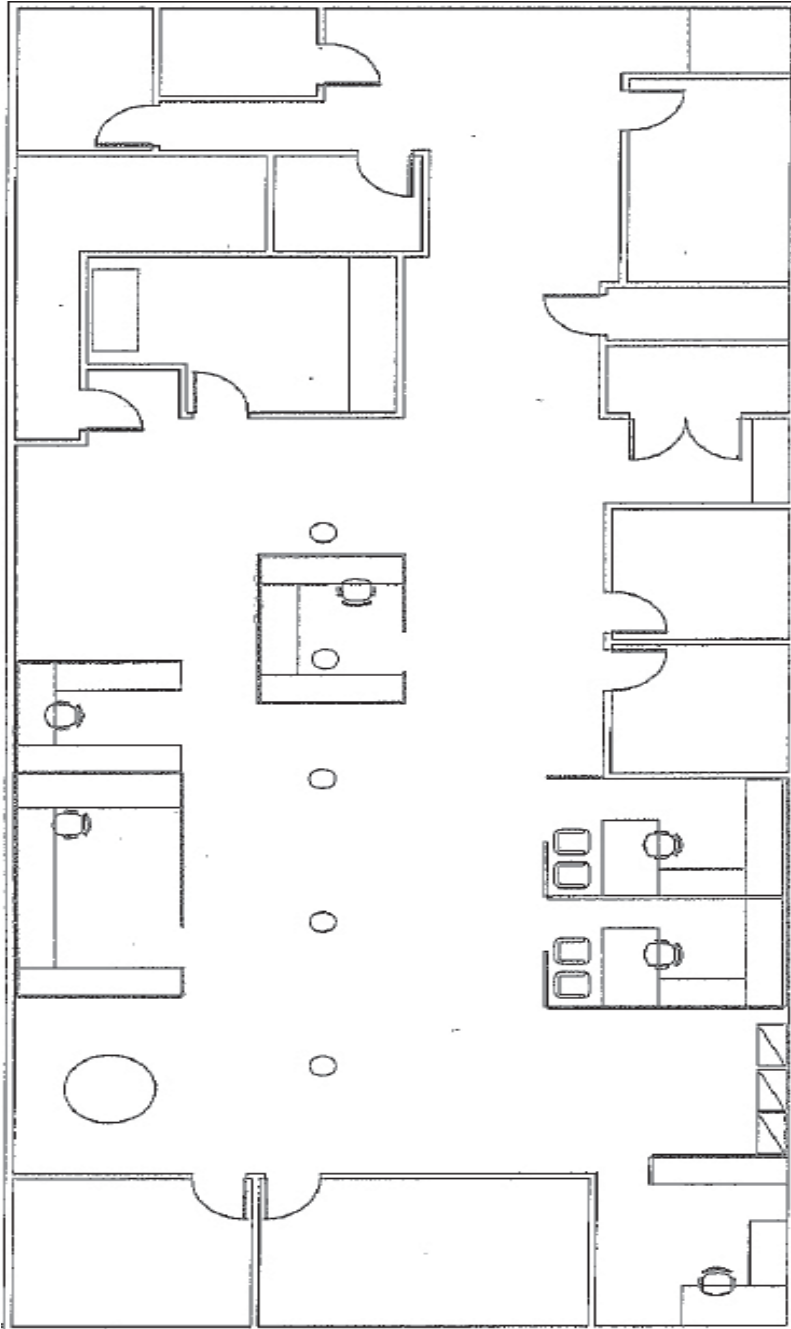
- > ± 4,478 SF third floor suite
- > Prominent location in the VISTA, Columbia's Arts and Entertainment District - one block from the State Capital
- > Originally built in 1910. Received prestigious Design Preservation Award from Historic Columbia for building renovations
- > Adjacent flat surface parking available with direct access to main lobby
- > Original hardwood floors, exposed beam ceilings, sky light, spiral HVAC ducting, separate energy efficient HVAC system, elevator service
- > Regions Bank located on ground level
- > Easy walking distance to restaurants and shopping
- > Lease rate: \$16.00/SF. Tenant to pay costs of electricity and janitorial service



TOMMY TAPP
803 401 4277
COLUMBIA, SC
tommy.tapp@colliers.com

COLLIERS INTERNATIONAL
1301 Gervais Street, Suite 600
Columbia, SC 29201
www.colliers.com/southcarolina

1010 Gervais Street > Floor Plan



Contact Us

TOMMY TAPP

803 401 4277

tommy.tapp@colliers.com

COLLIERS INTERNATIONAL
1301 Gervais Street, Suite 600
Columbia, SC 29201

www.colliers.com/southcarolina