



FOR LEASE > OFFICE

7110
FOREST AVE

Richmond, VA 23226

PROPERTY FEATURES

- > 30,722 two story office/medical building
- > Monument and building signage available
- > First floor conference room
- > Located in the Glen Forest Office Park with easy access to I-95 & I-64
- > Ample parking, 5 spaces per 1,000 SF
- > Well-maintained property
- > Close to Henrico Doctors' and St. Mary's Hospitals
- > Many retail amenities nearby
- > Potential opportunity for $\pm 12,000$ SF of contiguous space on the 2nd floor

CONTACT US:

Chris Wallace
Senior Vice President
+1 804 591 2424
chris.wallace@colliers.com

Eric Williford
Associate
+1 804 591 2410
eric.williford@colliers.com



Accelerating success.

COLLIERS INTERNATIONAL
7200 Glen Forest Drive | Suite 200
Richmond, VA 23226
www.colliers.com/richmond

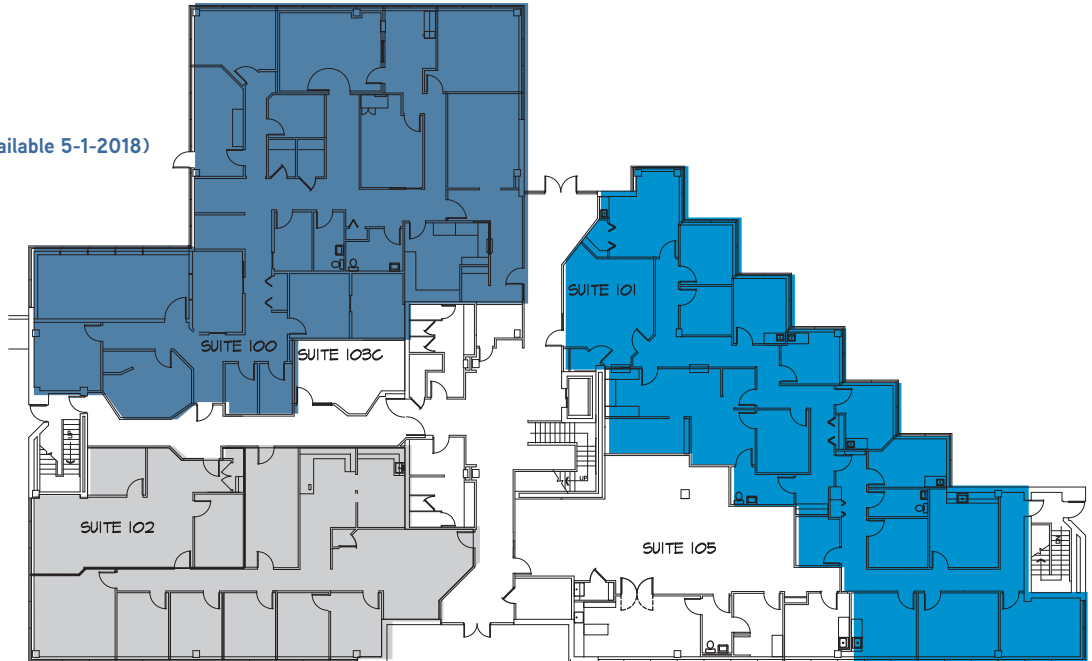
FIRST FLOOR

Suite 100 > ±5,451 SF (available 5-1-2018)

Suite 101 > ±4,223 RSF

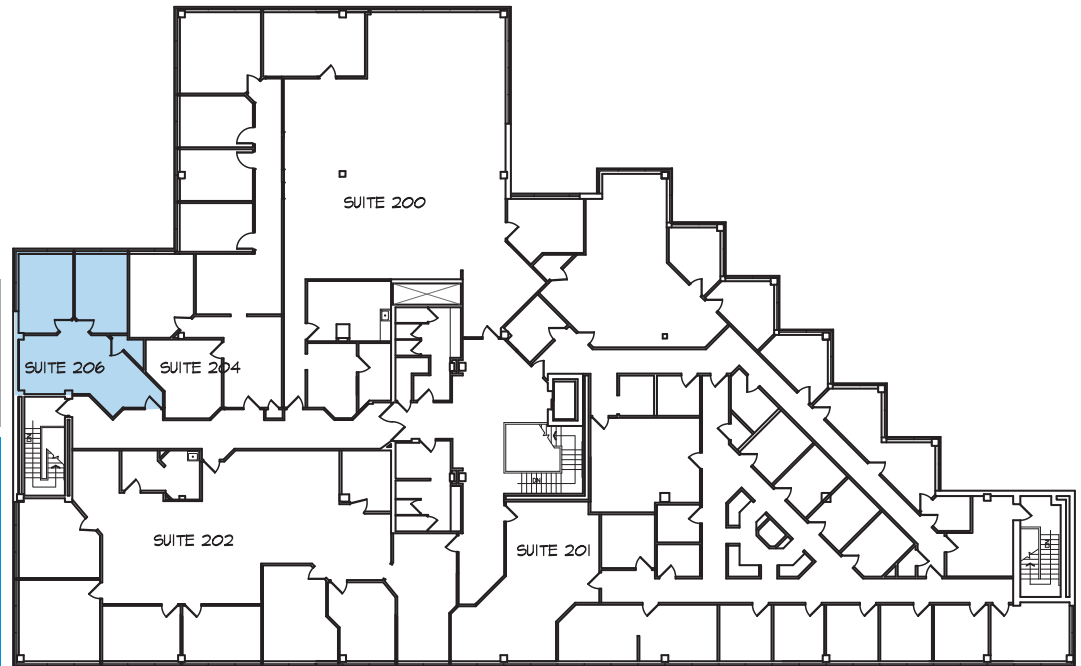
Suite 102 > ±3,191 RSF

All suites combined
12,865 RSF



SECOND FLOOR

Suite 206 > ±700 SF



CONTACT US

Chris Wallace
Senior Vice President
+1 804 591 2424
chris.wallace@colliers.com

Eric Williford
Associate
+1 804 591 2410
eric.williford@colliers.com



COLLIERS INTERNATIONAL
7200 Glen Forest Drive | Suite 200
Richmond, VA 23226
804 788 1000
www.colliers.com/richmond

FOR LEASE > OFFICE

7110 Forest Avenue | Richmond, VA 23226



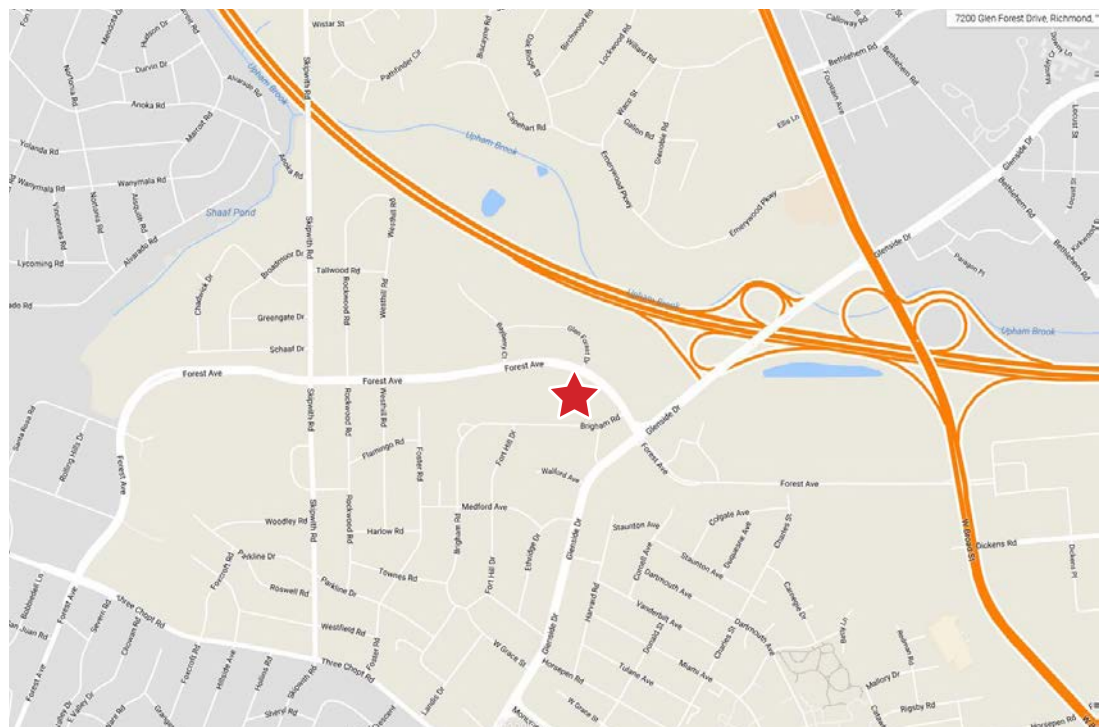
CONTACT US

Chris Wallace
Senior Vice President
+1 804 591 2424
chris.wallace@colliers.com

Eric Williford
Associate
+1 804 591 2410
eric.williford@colliers.com



COLLIERS INTERNATIONAL
7200 Glen Forest Drive | Suite 200
Richmond, VA 23226
804 788 1000
www.colliers.com/richmond



The information contained herein was obtained from sources, believed reliable, however, Colliers International makes no guarantees, warranties or representations as to the completeness or accuracy thereof. The presentation of this property is submitted subject to errors, omissions, change of price or conditions prior to sale or lease, or withdrawal without notice. File Name: ForestAve_7110_Lease rev 11-14-17