

FOR SALE OR LEASE > RETAIL

# FORMER CITIZENS BANK

200 EAST MAIN STREET | OWOSSO, MICHIGAN



**TRAFFIC COUNTS OF 13,064**

## > PROPERTY HIGHLIGHTS

- 6,872 SF Former Citizens Bank
- Asking: \$800,000 Sale  
\$13.50 SF NNN Lease
- On Lighted Corner in Downtown Owosso
- Drive-Thru with Lots of Parking

## > DEMOGRAPHICS

	1 MILE	3 MILE	5 MILE
POPULATION	10,595	23,916	27,734
AVG. INCOME	\$54,560	\$58,253	\$60,453
HOUSEHOLDS	4,282	9,958	11,512

**COLLIERS INTERNATIONAL**  
2 Corporate Drive | Suite 300  
Southfield, Michigan 48076

**For More Information Call:**

**BEN HUBERT**

PHONE 248 540 1000 EXT 1864

EMAIL [ben.hubert@colliers.com](mailto:ben.hubert@colliers.com)



**BEN ROSENZWEIG**

PHONE 248 540 1000 EXT 1866

EMAIL [ben.rosenzweig@colliers.com](mailto:ben.rosenzweig@colliers.com)



[colliers.com/detroit](http://colliers.com/detroit)



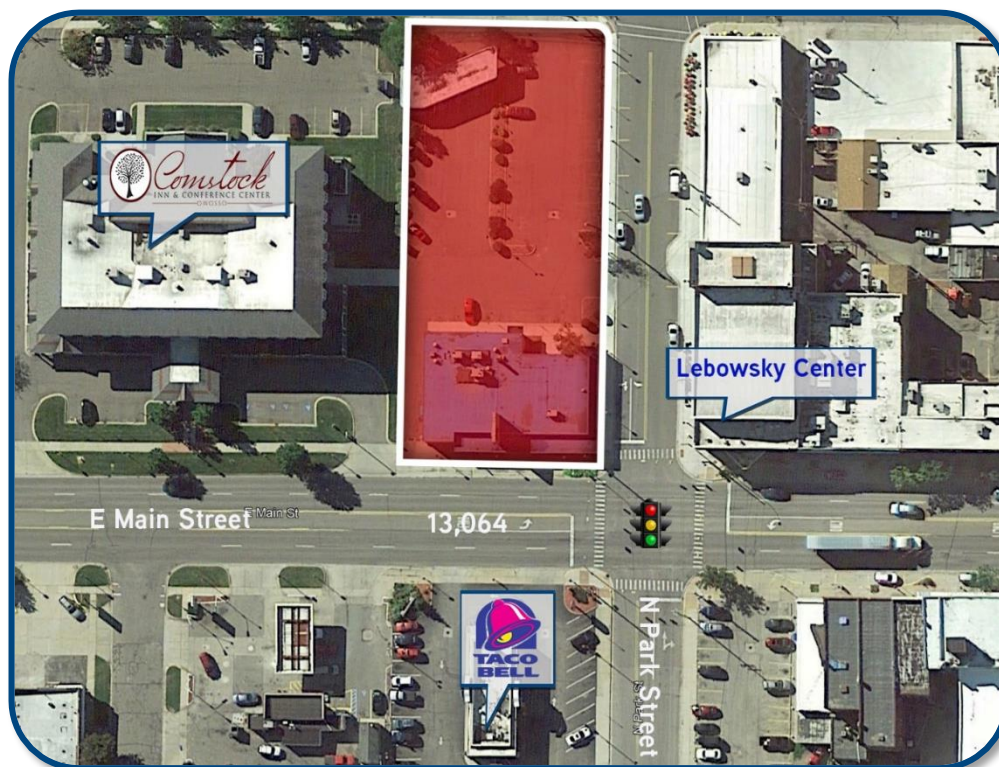
FOR SALE OR LEASE > RETAIL

# FORMER CITIZENS BANK

200 EAST MAIN STREET | OWOSSO, MICHIGAN

Colliers  
INTERNATIONAL

## > AERIAL & INTERIOR PHOTO



**BEN HUBERT**

PHONE 248 540 1000 EXT 1864  
EMAIL [ben.hubert@colliers.com](mailto:ben.hubert@colliers.com)

Colliers  
INTERNATIONAL

**BEN ROSENZWEIG**

PHONE 248 540 1000 EXT 1866  
EMAIL [ben.rosenzweig@colliers.com](mailto:ben.rosenzweig@colliers.com)



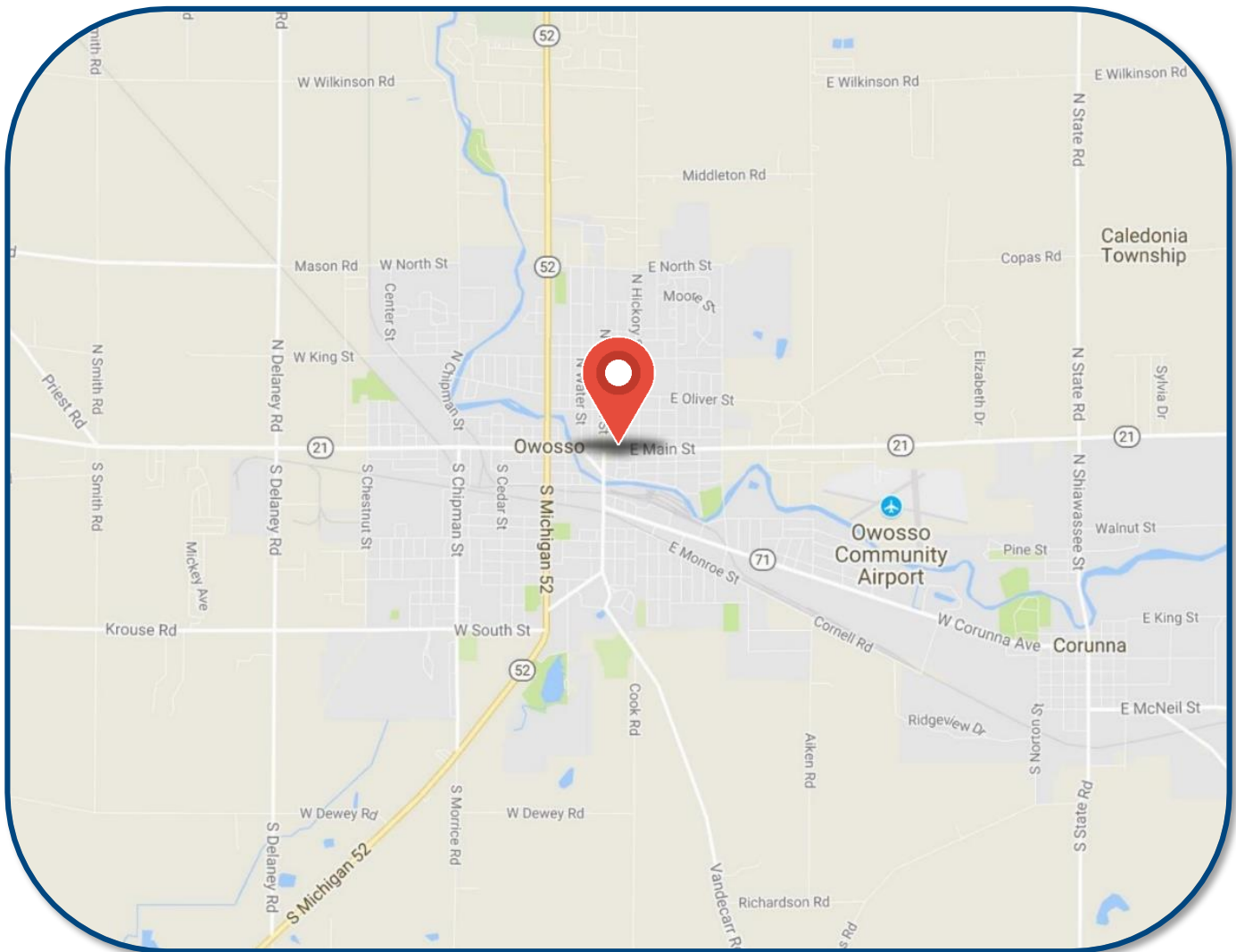
FOR SALE OR LEASE > RETAIL

# FORMER CITIZENS BANK

200 EAST MAIN STREET | OWOSSO, MICHIGAN



## > LOCATION MAP



**BEN HUBERT**

PHONE 248 540 1000 EXT 1864  
EMAIL [ben.hubert@colliers.com](mailto:ben.hubert@colliers.com)



**BEN ROSENZWEIG**

PHONE 248 540 1000 EXT 1866  
EMAIL [ben.rosenzweig@colliers.com](mailto:ben.rosenzweig@colliers.com)

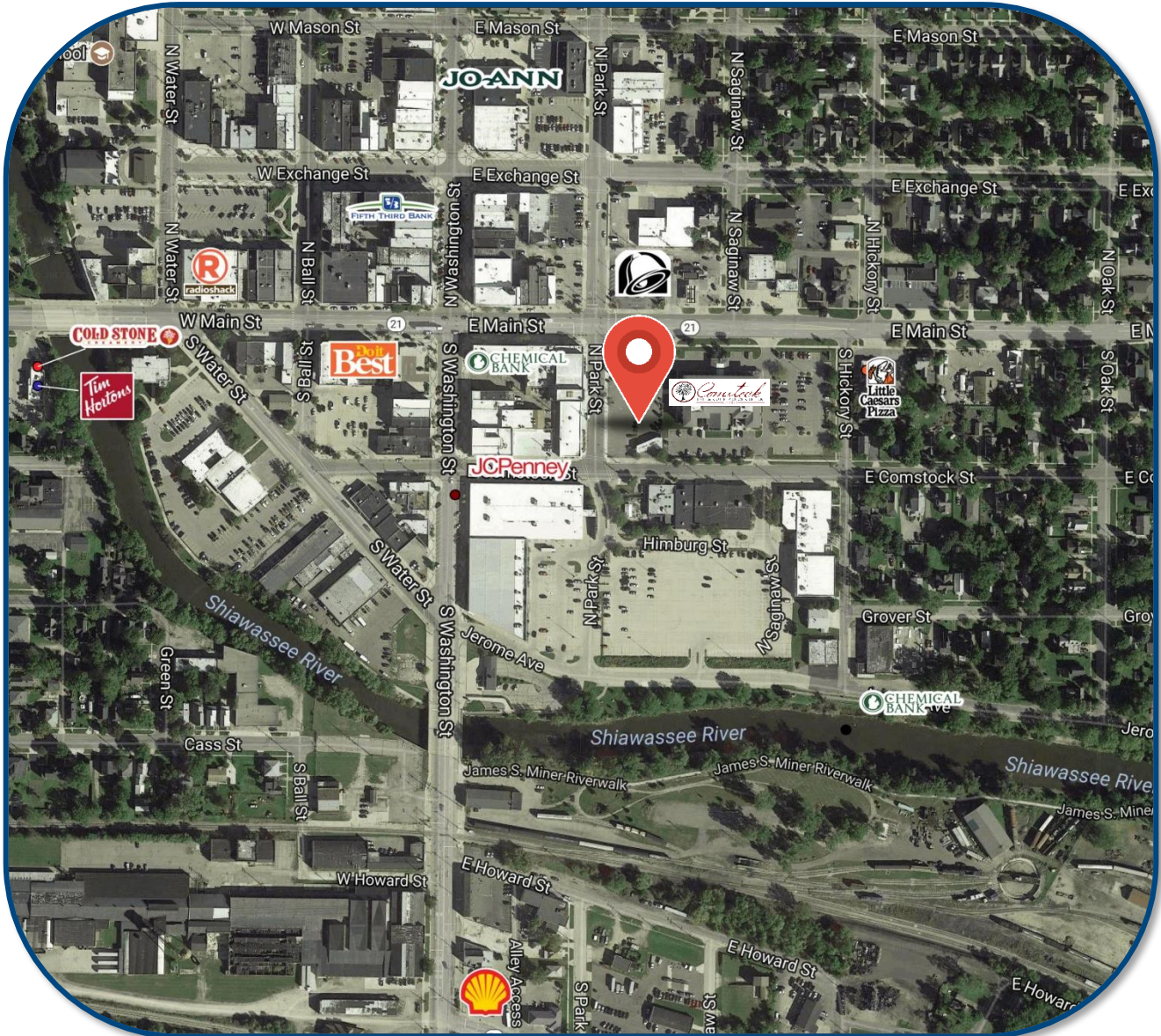
FOR SALE OR LEASE > RETAIL

# FORMER CITIZENS BANK

200 EAST MAIN STREET | OWOSSO, MICHIGAN



## > AREA MERCHANT MAP



**BEN HUBERT**

PHONE 248 540 1000 EXT 1864

EMAIL [ben.hubert@colliers.com](mailto:ben.hubert@colliers.com)



**BEN ROSENZWEIG**

PHONE 248 540 1000 EXT 1866

EMAIL [ben.rosenzweig@colliers.com](mailto:ben.rosenzweig@colliers.com)



# SUMMARY PROFILE

2000-2010 Census, 2017 Estimates with 2022 Projections

Calculated using Weighted Block Centroid from Block Groups



Lat/Lon: 42.9973/-84.1690

RS1

200 E Main St Owosso, MI 48867		1 mi radius	3 mi radius	5 mi radius
POPULATION	2017 Estimated Population	10,595	23,916	27,734
	2022 Projected Population	10,856	24,215	28,025
	2010 Census Population	10,753	24,506	28,446
	2000 Census Population	11,154	24,763	28,709
	Projected Annual Growth 2017 to 2022	0.5%	0.3%	0.2%
	Historical Annual Growth 2000 to 2017	-0.3%	-0.2%	-0.2%
	2017 Median Age	33.8	38.2	39.3
HOUSEHOLDS	2017 Estimated Households	4,282	9,958	11,512
	2022 Projected Households	4,442	10,192	11,757
	2010 Census Households	4,284	9,986	11,525
	2000 Census Households	4,506	9,865	11,337
	Projected Annual Growth 2017 to 2022	0.7%	0.5%	0.4%
	Historical Annual Growth 2000 to 2017	-0.3%	0.1%	0.1%
RACE AND ETHNICITY	2017 Estimated White	94.5%	95.2%	95.4%
	2017 Estimated Black or African American	1.0%	0.9%	0.8%
	2017 Estimated Asian or Pacific Islander	0.6%	0.8%	0.8%
	2017 Estimated American Indian or Native Alaskan	0.5%	0.5%	0.4%
	2017 Estimated Other Races	3.3%	2.7%	2.6%
	2017 Estimated Hispanic	4.8%	3.9%	3.7%
INCOME	2017 Estimated Average Household Income	\$54,560	\$58,253	\$60,453
	2017 Estimated Median Household Income	\$40,722	\$45,625	\$47,394
	2017 Estimated Per Capita Income	\$22,663	\$24,815	\$25,604
EDUCATION (AGE 25+)	2017 Estimated Elementary (Grade Level 0 to 8)	1.7%	2.3%	2.3%
	2017 Estimated Some High School (Grade Level 9 to 11)	6.6%	6.4%	6.3%
	2017 Estimated High School Graduate	34.1%	35.3%	35.5%
	2017 Estimated Some College	32.4%	29.5%	29.5%
	2017 Estimated Associates Degree Only	9.6%	9.7%	10.0%
	2017 Estimated Bachelors Degree Only	10.1%	10.4%	10.2%
	2017 Estimated Graduate Degree	5.5%	6.4%	6.2%
BUSINESS	2017 Estimated Total Businesses	590	1,231	1,349
	2017 Estimated Total Employees	5,567	12,529	13,323
	2017 Estimated Employee Population per Business	9.4	10.2	9.9
	2017 Estimated Residential Population per Business	18.0	19.4	20.6

This report was produced using data from private and government sources deemed to be reliable. The information herein is provided without representation or warranty.