

BELLWOOD COMMONS

BEVILLE ROAD & CAMBRIDGE AVE. // DAYTONA BEACH, FL

LOCATION MAP



CONTACT US

Jorge Rodriguez, CCIM
Executive Managing Director,
Retail Services
+1 407 362 6141
jorge.rodriguez@colliers.com

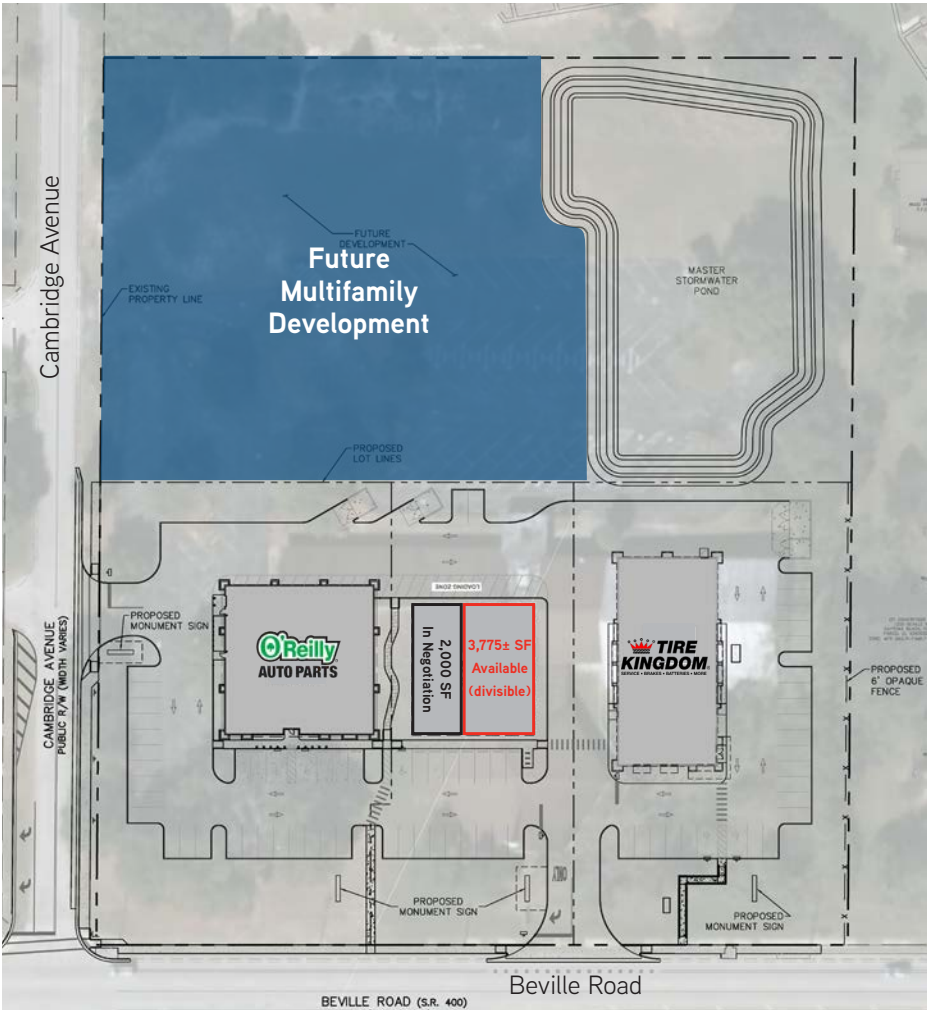
Colliers International
255 S. Orange Avenue,
Suite 1300
Orlando, FL 32801
www.colliers.com

FOR LEASE > RETAIL

PROPERTY HIGHLIGHTS

- Brand new redevelopment now under construction on the northeast corner of Beville Rd. and Cambridge Ave. in Daytona Beach, FL.
- Up to 5,775± SF available (divisible).
- Join O'Reilly Auto Parts and Tire Kingdom.
- Proposed multifamily new development to be built directly behind retail.
- Surrounding retailers include Sam's Club, Wal-Mart, Aldi (future), and Office Depot.
- Beville Road sees more than 32,000± vehicles per day.

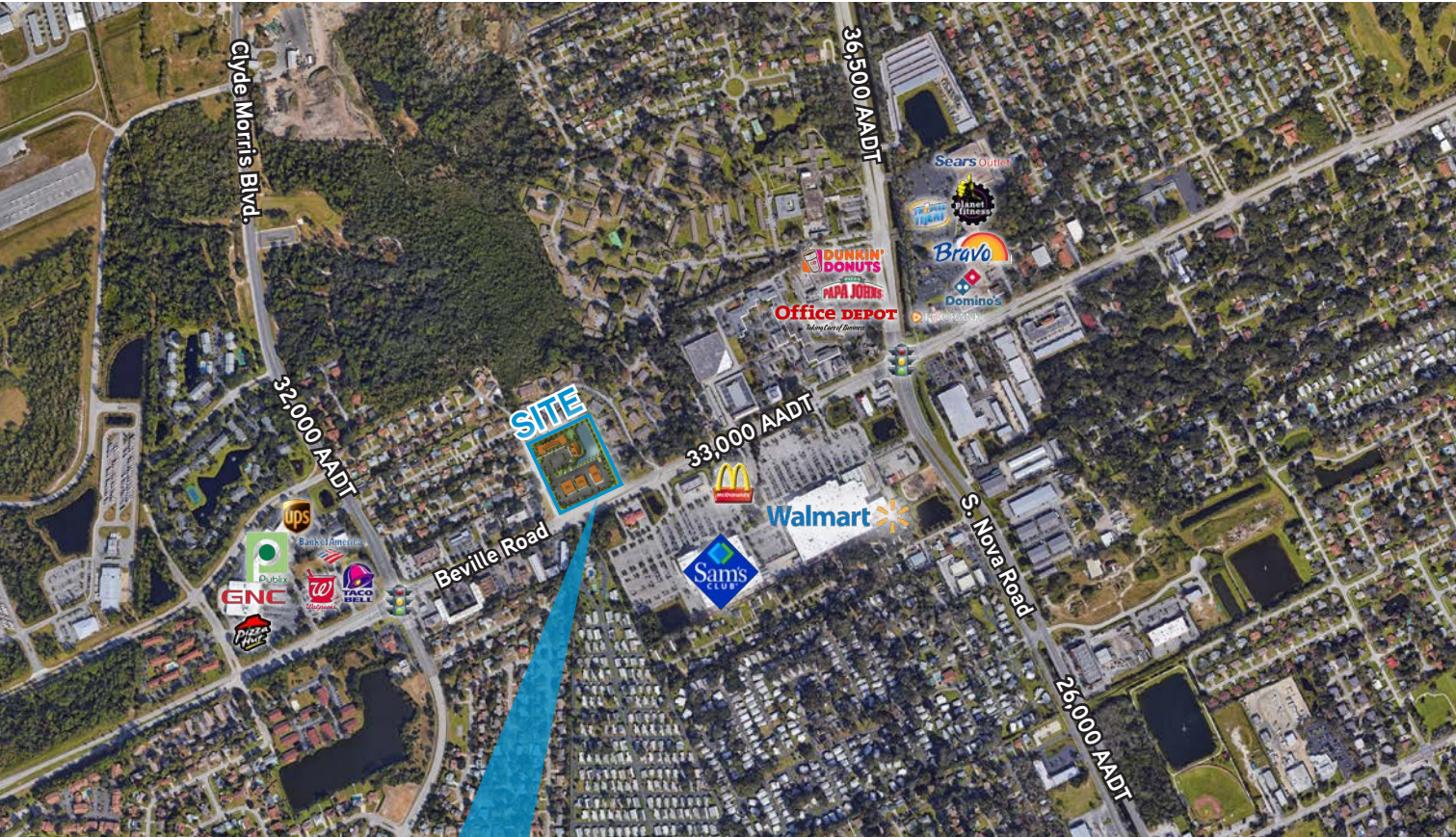
SITE PLAN



PROPOSED ELEVATION



SITE PLAN



*Rendering site plan, subject to change.

AREA DEMOGRAPHICS

	1-Mile	3-Mile	5-Mile
Total Population	8,379	60,345	122,308
Daytime Population	5,449	46,395	89,723
Households	4,520	27,034	56,084
Average HH Income	\$38,302	\$42,262	\$44,531
Median Age	42.6	42.5	45.1

CONTACT US

JORGE RODRIGUEZ, CCIM
Executive Managing Director
Retail Services
+1 407 362 6141
jorge.rodriquez@colliers.com

COLLIERS INTERNATIONAL
255 S. Orange Ave., Suite 1300
Orlando, FL 32801
www.colliers.com

