

FOR LEASE > OFFICE BUILDING

600 Corporate Center Drive

CHERRINGTON CORPORATE CENTER, BUILDING 600, MOON TOWNSHIP, PA 15108



Property Information

- > 67,000 RSF on four floors
- > Easy access to transportation corridors and excellent visibility in a premier suburban office park
- > Property management on-site
- > Institutional grade ownership

LEASE > RATE

Please contact one of our exclusive leasing professionals to discuss lease terms

Building 600 > Amenities

- > Park like setting
- > Ample free surface parking
- > Embassy Suites & Marriott Courtyard within walking distance

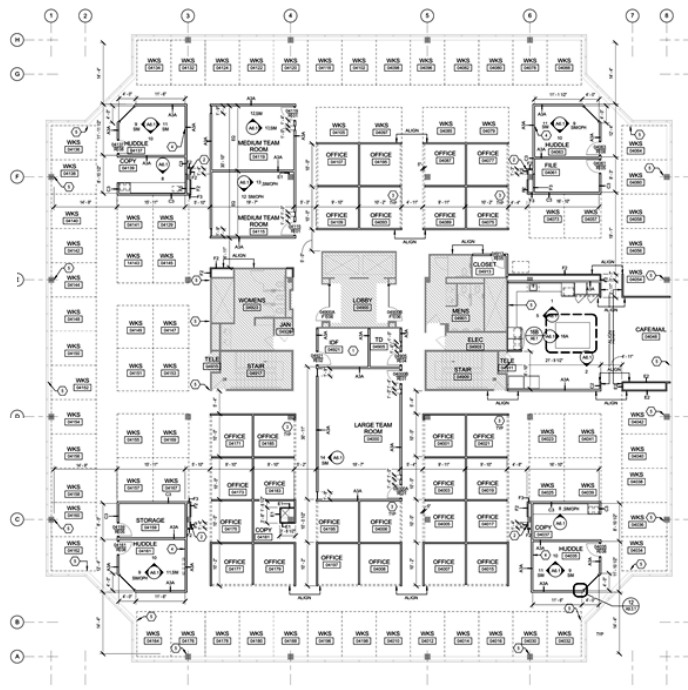


**Equity
Commonwealth**

PAUL HORAN
FOUNDING PRINCIPAL | PITTSBURGH
OFFICE BROKERAGE
412 321 4200 | EXT. 205
paul.horan@colliers.com

EDWARD LAWRENCE ^{MBA}
PRINCIPAL | PITTSBURGH
OFFICE BROKERAGE
412 321 4200 | EXT. 213
ed.lawrence@colliers.com

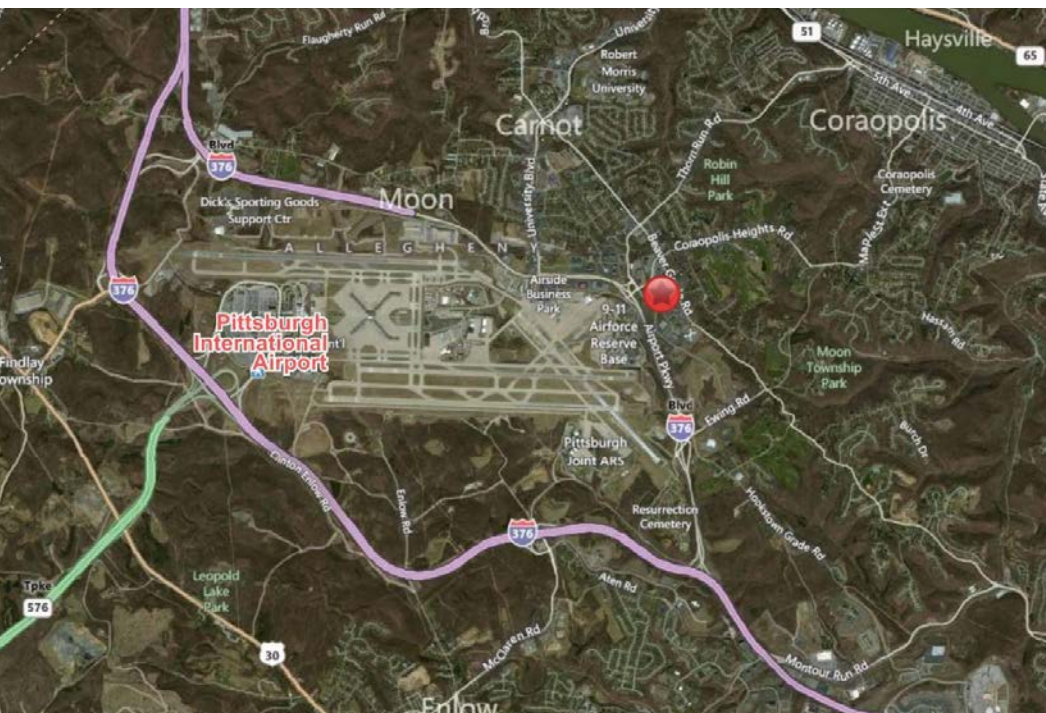
Building 600 > Floor Plan



4th Floor Plan

Location Highlights

Situated along the Parkway West Corridor, Cherrington Corporate Center | Building 600 is accessible via two interchanges from Route 60 (Ewing Road and Thorn Run Road), located in close proximity to the Pittsburgh International Airport and just 20 minutes to downtown Pittsburgh.



Contact Us

PAUL HORAN

FOUNDING PRINCIPAL | PITTSBURGH

OFFICE BROKERAGE

412 321 4200 | EXT. 205

paul.horan@colliers.com

EDWARD LAWRENCE MBA

PRINCIPAL | PITTSBURGH

OFFICE BROKERAGE

412 321 4200 | EXT. 213

ed.lawrence@colliers.com

COLLIERS INTERNATIONAL | PITTSBURGH

Two Gateway Center, Suite 125

603 Stanwix Street

Pittsburgh, PA 15222

www.colliers.com/pittsburgh

The information contained herein has been given to us by the owner of the property or other sources deemed reliable. We have no reason to doubt its accuracy, but we do not guarantee it. All information should be verified prior to purchase or lease.

