

## AVAILABLE SPACE

### 1st Floor

19,634 SF total contiguous

3,631 SF (corner unit)  
5,306 SF (lobby access)  
8,937 SF contiguous

4,400 SF (lobby access)  
6,297 SF (corner unit)  
10,697 contiguous

6,419 SF (corner unit)

### 2nd Floor

1,703 SF  
8,990 SF (sublease available through 3/31/23)

### 3rd Floor

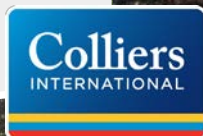
4,872 SF

# 3150

## BRUNSWICK PIKE

CROSSROADS CORPORATE CENTER

Lawrenceville, NJ



THOMAS ROMANO | THOMAS.ROMANO@COLLIERS.COM | +1 609 269 1111  
COLLIERS INTERNATIONAL NJ, LLC | 500 Alexander Park, Suite 101 | Princeton, NJ 08540 | colliers.com/Princeton





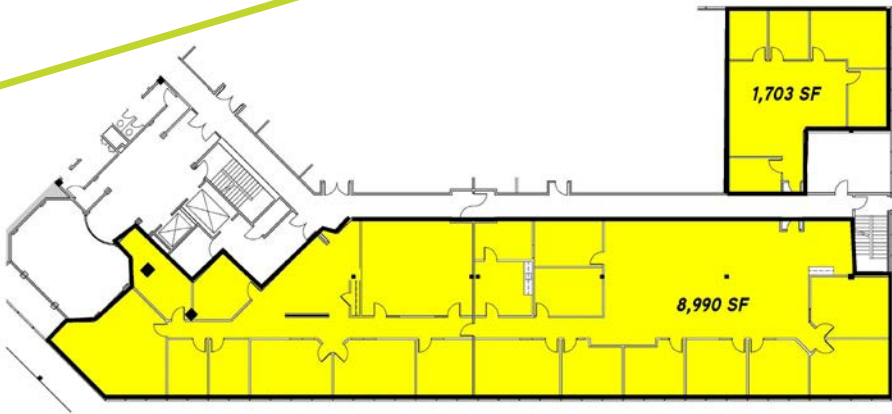
## 1st FLOOR

# 3150

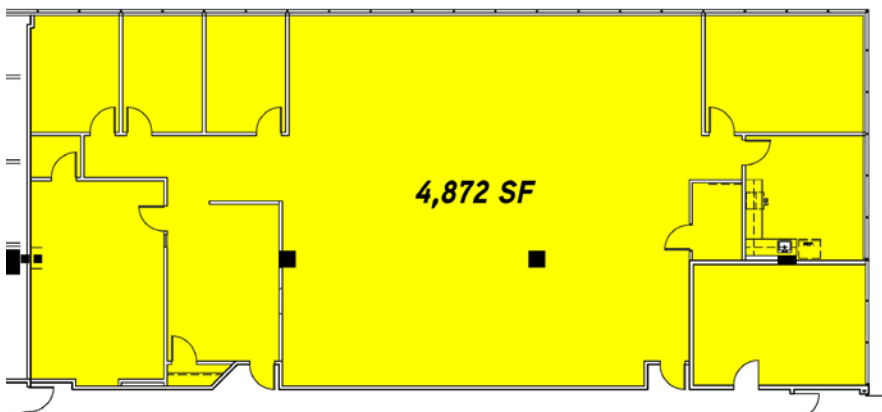
## BRUNSWICK PIKE

CROSSROADS CORPORATE CENTER

Lawrenceville, NJ



## 2nd FLOOR



## 3rd FLOOR



THOMAS ROMANO | [THOMAS.ROMANO@COLLIERS.COM](mailto:THOMAS.ROMANO@COLLIERS.COM) | +1 609 269 1111

COLLIERS INTERNATIONAL NJ, LLC | 500 Alexander Park, Suite 101 | Princeton, NJ 08540 | [colliers.com/Princeton](http://colliers.com/Princeton)

No representation is made as to the accuracy of the information furnished herein and same is submitted subject to errors, omissions, change of prices, rental, or other conditions, prior sale, lease, sublease, and/or withdrawal without notice. The furnishing of this information shall not be deemed a hiring. A commission in accordance with our principal's schedule of rates and conditions will be paid to the procuring Broker who executes our or our principal's brokerage agreement, subject to a fully consummated transaction upon terms and conditions acceptable to our principal.