

FOR LEASE > CREATIVE OFFICE SPACE

965 Mission Street

MID MARKET | SAN FRANCISCO



Suite 405 ± 2,145 RSF
Available 1/1/2020

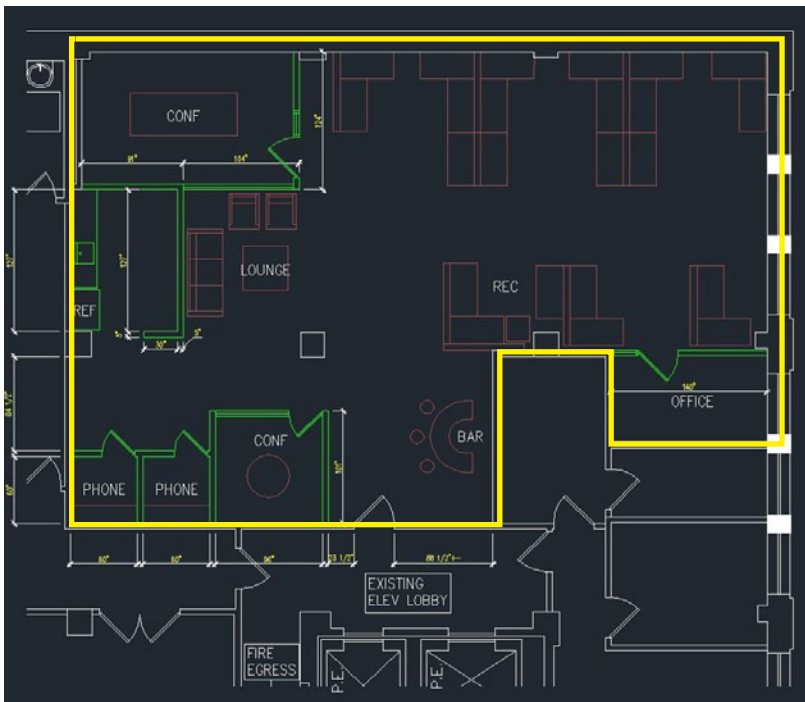
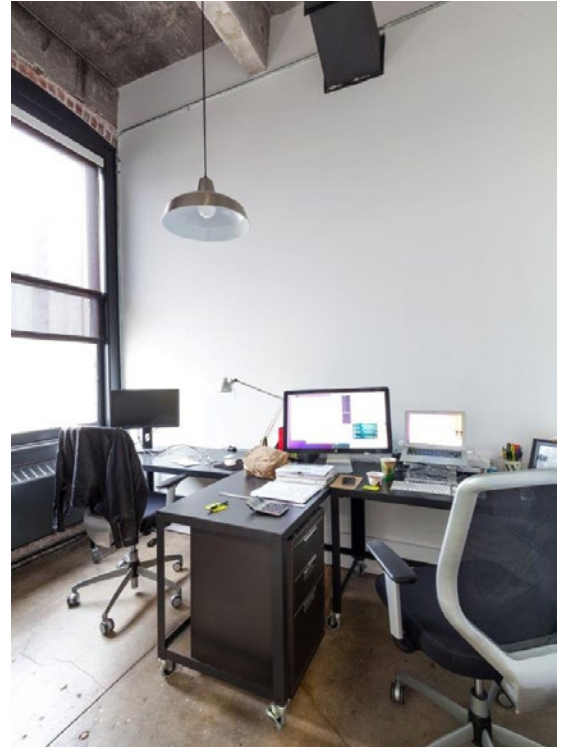
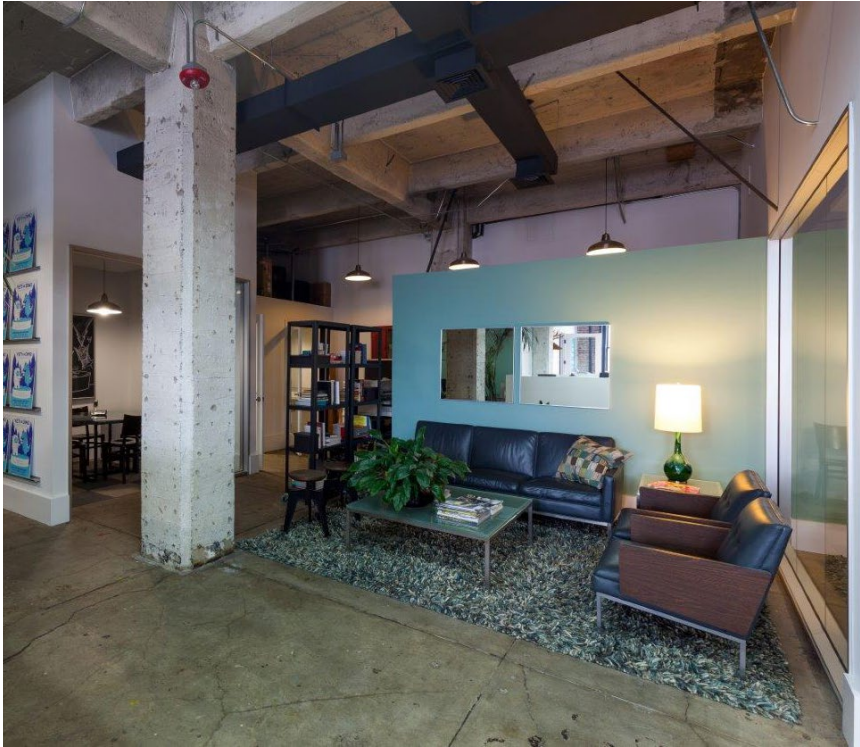
- > Primarily Open Plan
- > Reception Area
- > 1 Large Conference Room
- > 1 4-Person Conference Room
- > 2 Phone Rooms
- > 1 Private Office
- > Kitchenette
- > Exposed Brick, Concrete Floors

FOR LEASE > CREATIVE OFFICE SPACE

965 Mission Street

MID MARKET | SAN FRANCISCO

Suite 405 Approximately 2,145 RSF Available 1/1/2020



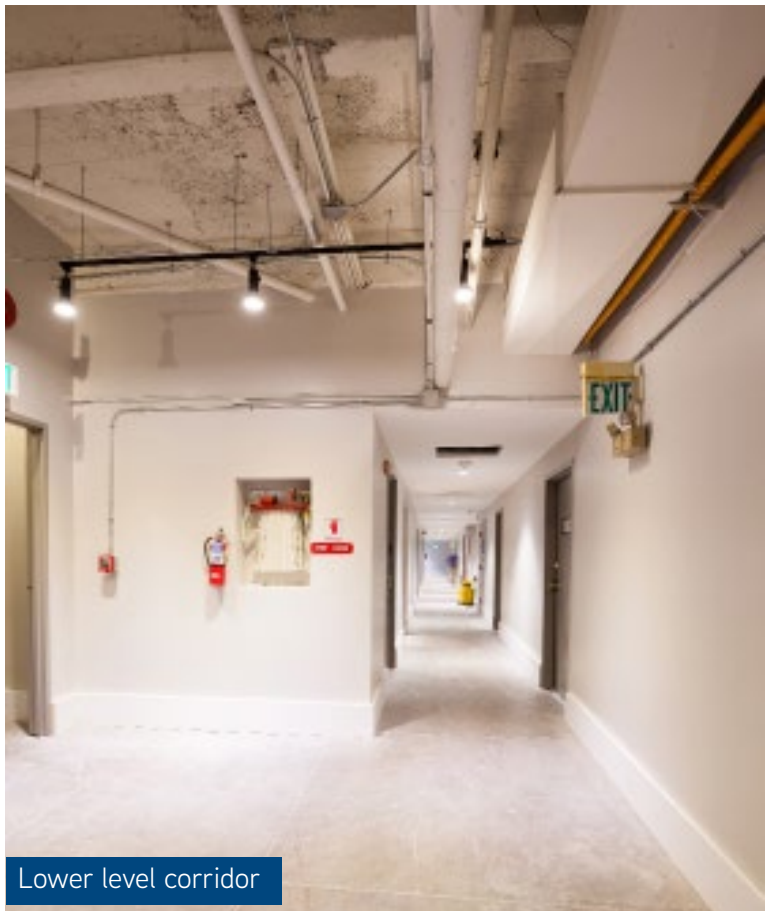
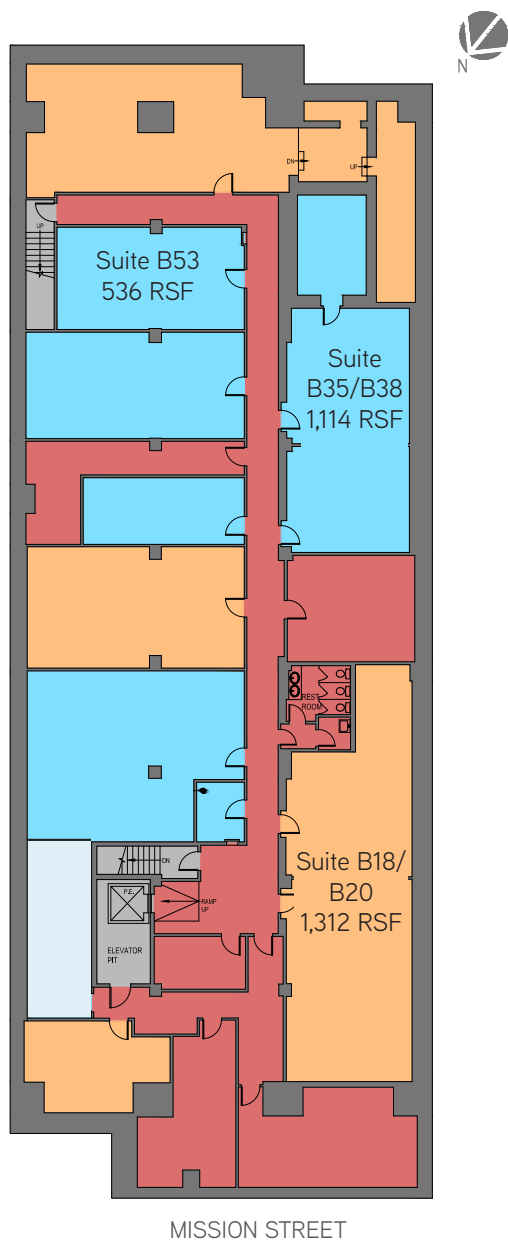
FOR LEASE > CREATIVE OFFICE SPACE

965 Mission Street

MID MARKET | SAN FRANCISCO

Lower Level Suites Available Now

- > Suite B18/B20 - Approximately 1,312 RSF, includes kitchen
- > Suite B55 - Approximately 650 RSF
- > Suite B35/B38 - Approximately 1,114 RSF
- > Exposed concrete flooring
- > Industrial open ceilings



FOR LEASE > CREATIVE OFFICE SPACE

965 Mission Street

MID MARKET | SAN FRANCISCO



Contact

JOHN JENSEN
LIC. 01102014
415 867 1178
john.jensen@colliers.com

COLLIERS INTERNATIONAL
101 Second Street, 11th Floor
San Francisco, CA 94105
www.colliers.com

This marketing piece has been prepared by Colliers International for general information only. Information contained herein has been obtained from sources deemed reliable and no representation is made as to the accuracy thereof. Colliers International does not guarantee, warrant or represent that the information contained in this document is correct. Any interested party should undertake their own inquiries as to the accuracy of the information. Colliers International excludes equivocally all inferred or implied terms, conditions and warranties arising out of this document and excludes liability for loss and damages arising there from.

