

FOR LEASE > CREATIVE OFFICE SPACE



# 965 Mission Street

Between 5th and 6th Streets

MID MARKET | SAN FRANCISCO



Suite 480 - 6,986 RSF



## Highlights

- > Suite 480: 6,986 RSF Available September 1, 2018
- > Suite 100: 800 RSF Available now
- > Nearby major tech tenants: Yahoo!, HUB, Zendesk
- > Easy access to Blue Bottle Coffee, Mint Plaza
- > Convenient to BART/MUNI at Powell Station
- > Beautiful historic building

JOHN JENSEN  
LIC. 01102014  
CELL: 415 867 1178  
[john.jensen@colliers.com](mailto:john.jensen@colliers.com)

COLLIERS INTERNATIONAL  
101 Second Street, 11th Floor  
San Francisco, CA 94105  
[www.colliers.com](http://www.colliers.com)

# 965 Mission Street

Suite 480 - Approx. 6,986 RSF

- MINNA STREET





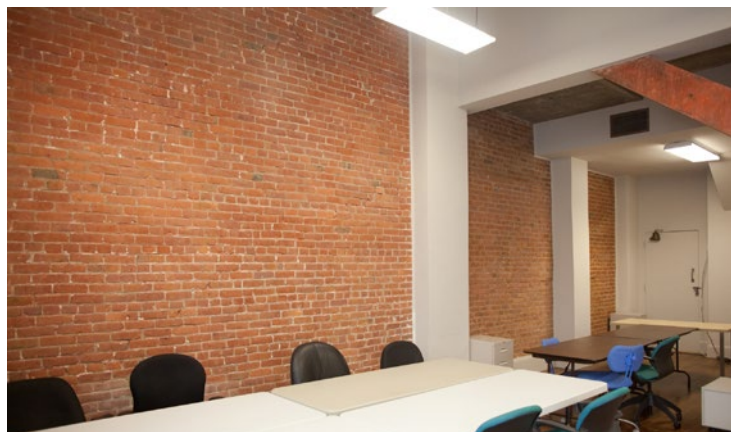
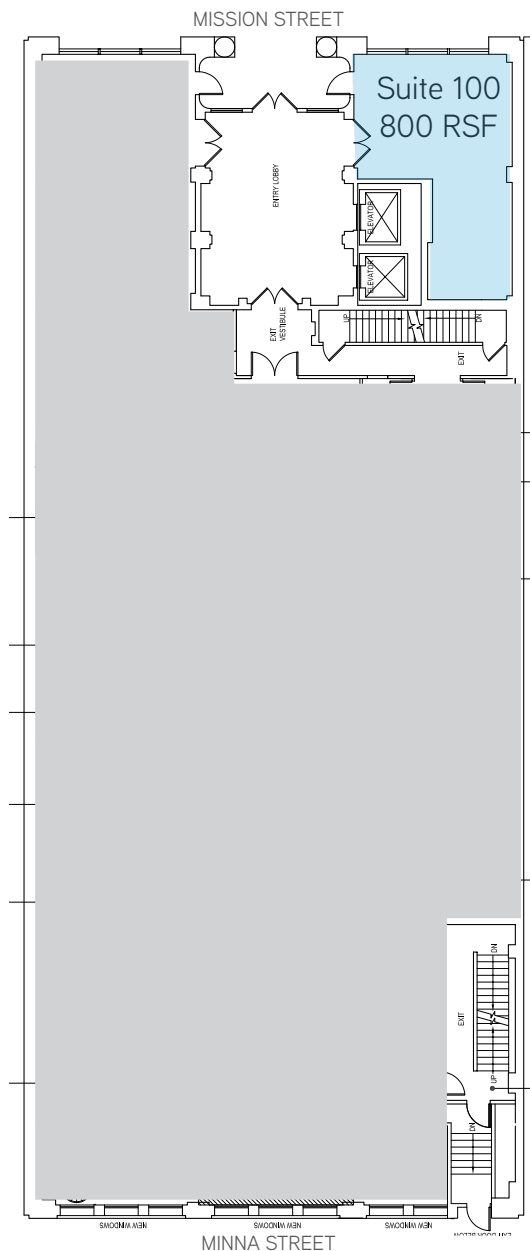
FOR LEASE > CREATIVE OFFICE SPACE

# 965 Mission Street

MID MARKET | SAN FRANCISCO

Suite 100 - Approx. 800 RSF

- > Available now
- > Excellent light, high ceilings
- > Exposed brick, hardwood floors
- > Open plan, entry off lobby



This marketing piece has been prepared by Colliers International for general information only. Information contained herein has been obtained from sources deemed reliable and no representation is made as to the accuracy thereof. Colliers International does not guarantee, warrant or represent that the information contained in this document is correct. Any interested party should undertake their own inquiries as to the accuracy of the information. Colliers International excludes equivocally all inferred or implied terms, conditions and warranties arising out of this document and excludes liability for loss and damages arising there from.

FOR LEASE > CREATIVE OFFICE SPACE

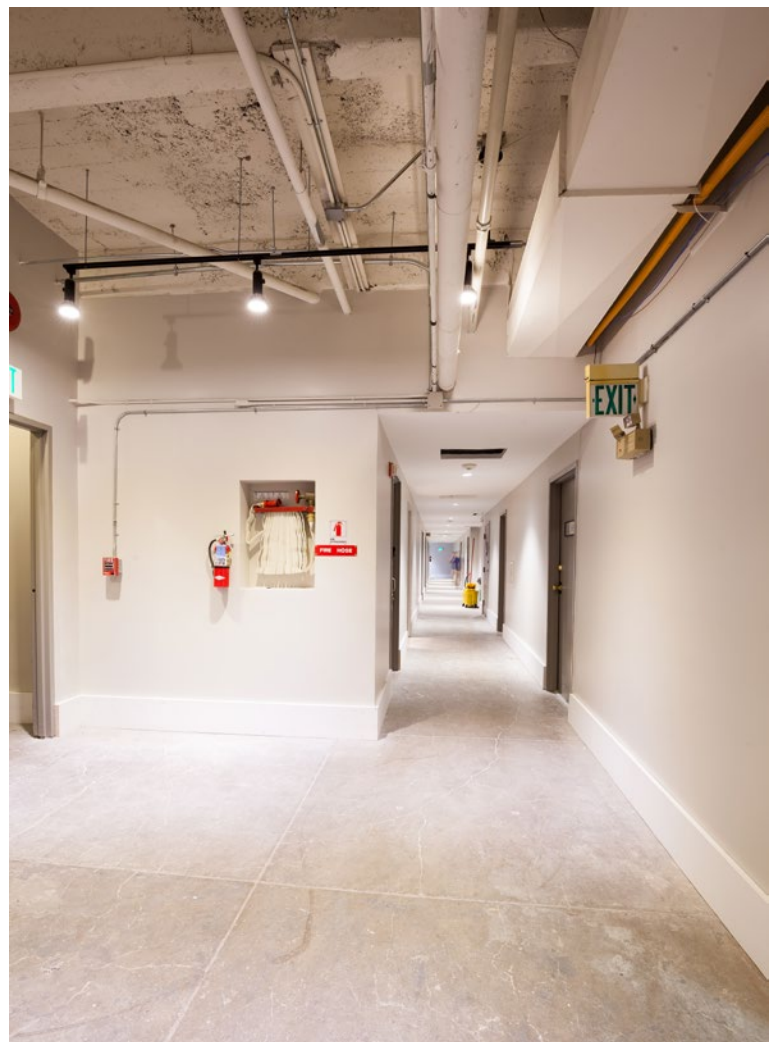
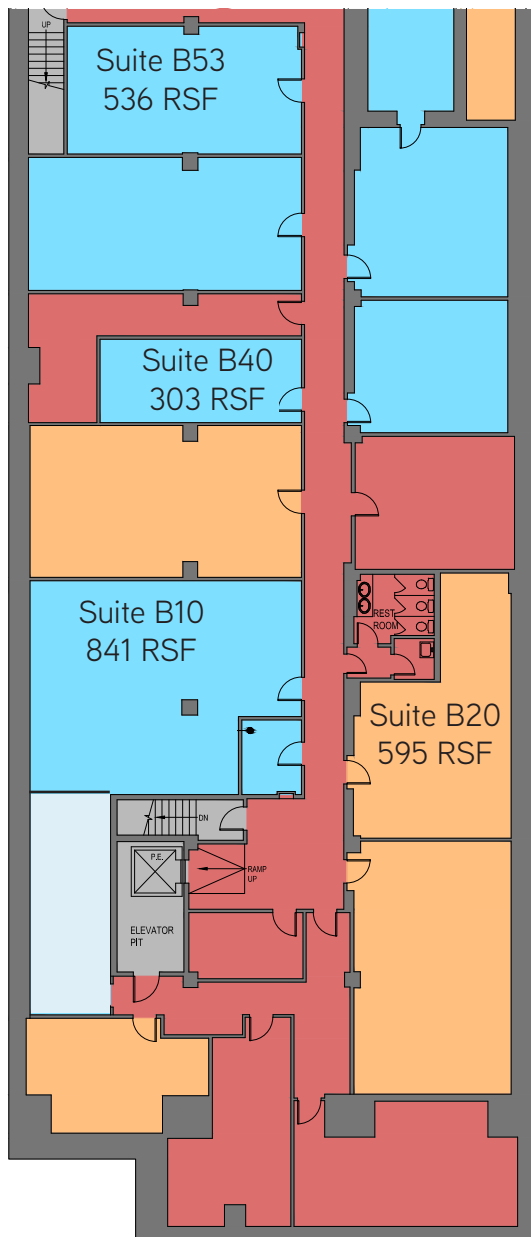
# 965 Mission Street

MID MARKET | SAN FRANCISCO

## LOWER LEVEL

Lower level recently renovated with new LED lighting, exhaust fans, exposed concrete flooring, industrial open ceiling, restrooms.

- > Suite B10 - Approximately 841 RSF - Available Now; open plan, concrete flooring
- > Suite B53 - Approximately 536 RSF - Available now; open plan, concrete flooring
- > Suite B20 - Approximately 595 RSF - Available now
- > Suite B40 - Approximately 303 RSF - Available now



Lower Level Corridor

FOR LEASE > CREATIVE OFFICE SPACE

# 965 Mission Street

Between 5th and 6th Streets

MID MARKET | SAN FRANCISCO



## Contact

JOHN JENSEN

LIC. 01102014

415 867 1178

[john.jensen@colliers.com](mailto:john.jensen@colliers.com)

COLLIERS INTERNATIONAL

101 Second Street, 11th Floor  
San Francisco, CA 94105

[www.colliers.com](http://www.colliers.com)

This marketing piece has been prepared by Colliers International for general information only. Information contained herein has been obtained from sources deemed reliable and no representation is made as to the accuracy thereof. Colliers International does not guarantee, warrant or represent that the information contained in this document is correct. Any interested party should undertake their own inquiries as to the accuracy of the information. Colliers International excludes equivocally all inferred or implied terms, conditions and warranties arising out of this document and excludes liability for loss and damages arising there from.

