

FOR LEASE > RETAIL

RETAIL AVAILABILITY

4455 CORUNNA ROAD | FLINT TOWNSHIP, MICHIGAN



EXCELLENT RETAIL CORRIDOR

> PROPERTY HIGHLIGHTS

- 1,844 SF – 35' x 53' Space For Lease
- Near Lowe's, Wal-Mart, Sam's Club & Home Depot
- Traffic Counts = 31,500 on West Corunna Road
- Monument Signage Available
- Join: Rally's & Great Clips

> DEMOGRAPHICS

	1 MILE	3 MILE	5 MILE
POPULATION	4,107	38,304	107,358
AVG. INCOME	\$46,657	\$52,846	\$46,350
HOUSEHOLDS	2,048	16,652	45,671

COLLIERS INTERNATIONAL
2 Corporate Drive | Suite 300
Southfield, Michigan 48076

For More Information Call:

LOU FRANGO
PHONE 248 540 1000 EXT 1678
EMAIL lou.frango@colliers.com



colliers.com/detroit



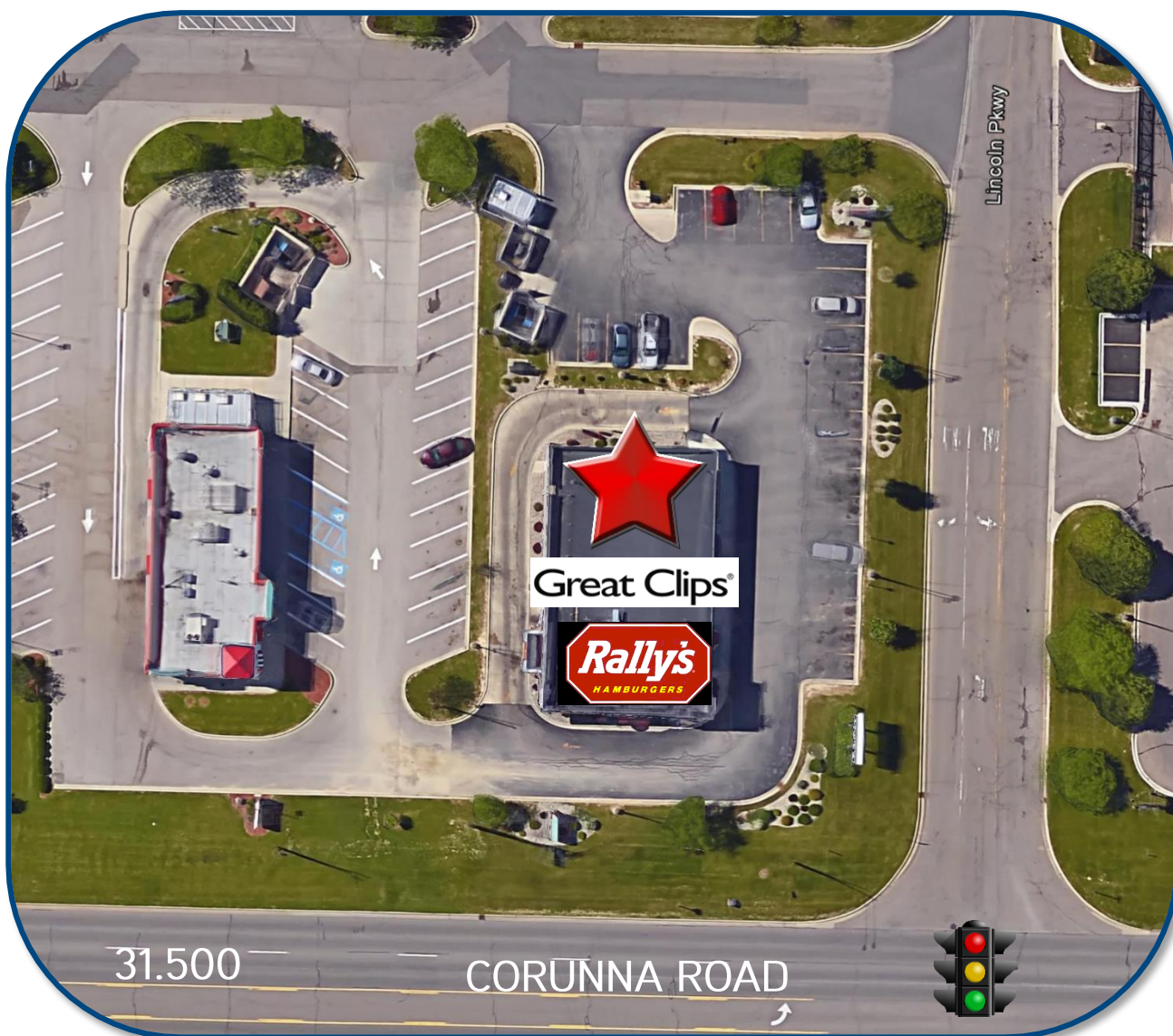
FOR LEASE > RETAIL

RETAIL AVAILABILITY

4455 CORUNNA ROAD | FLINT TOWNSHIP, MICHIGAN



> AERIAL



LOU FRANGO
PHONE 248 540 1000 EXT 1678
EMAIL lou.frango@colliers.com

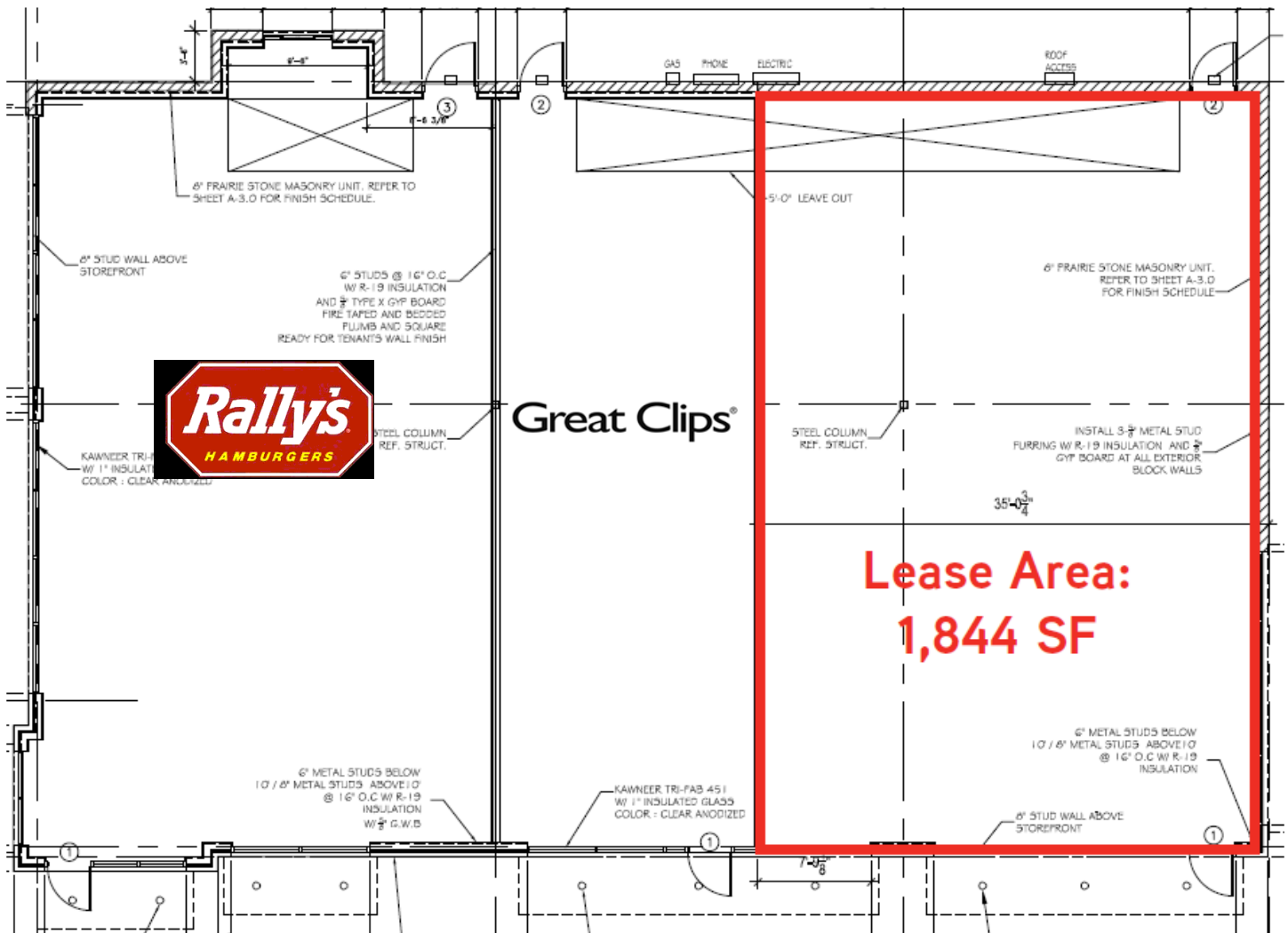


COLLIERS INTERNATIONAL
2 Corporate Dr. | Suite 300
Southfield, Michigan 48076

RETAIL AVAILABILITY



> SITE PLAN



COLLIERS INTERNATIONAL
2 Corporate Dr. | Suite 300
Southfield, Michigan 48076

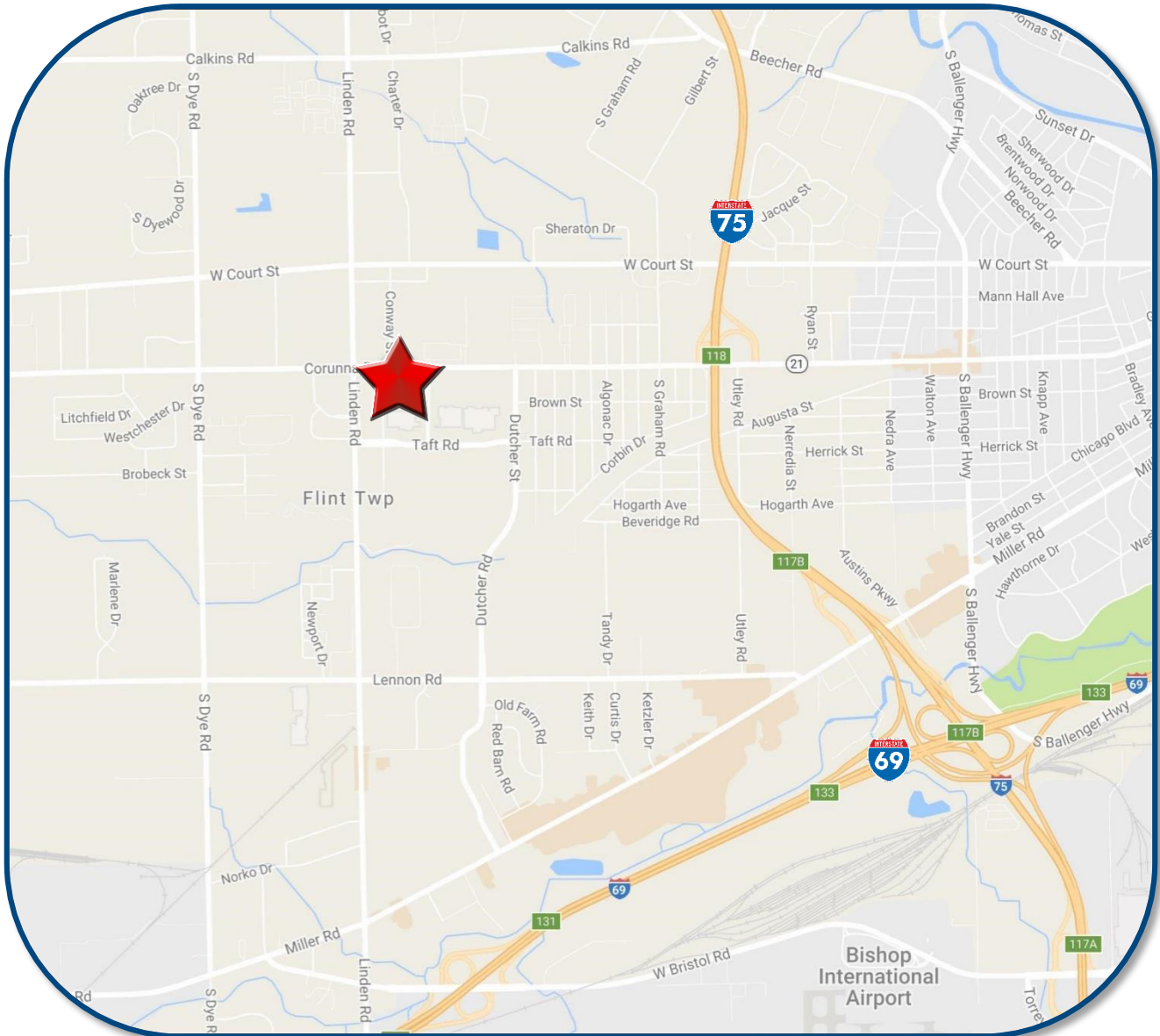
FOR LEASE > RETAIL

RETAIL AVAILABILITY

4455 CORUNNA ROAD | FLINT TOWNSHIP, MICHIGAN



> LOCATION MAP



LOU FRANGO
PHONE 248 540 1000 EXT 1678
EMAIL lou.frango@colliers.com



COLLIERS INTERNATIONAL
2 Corporate Dr. | Suite 300
Southfield, Michigan 48076

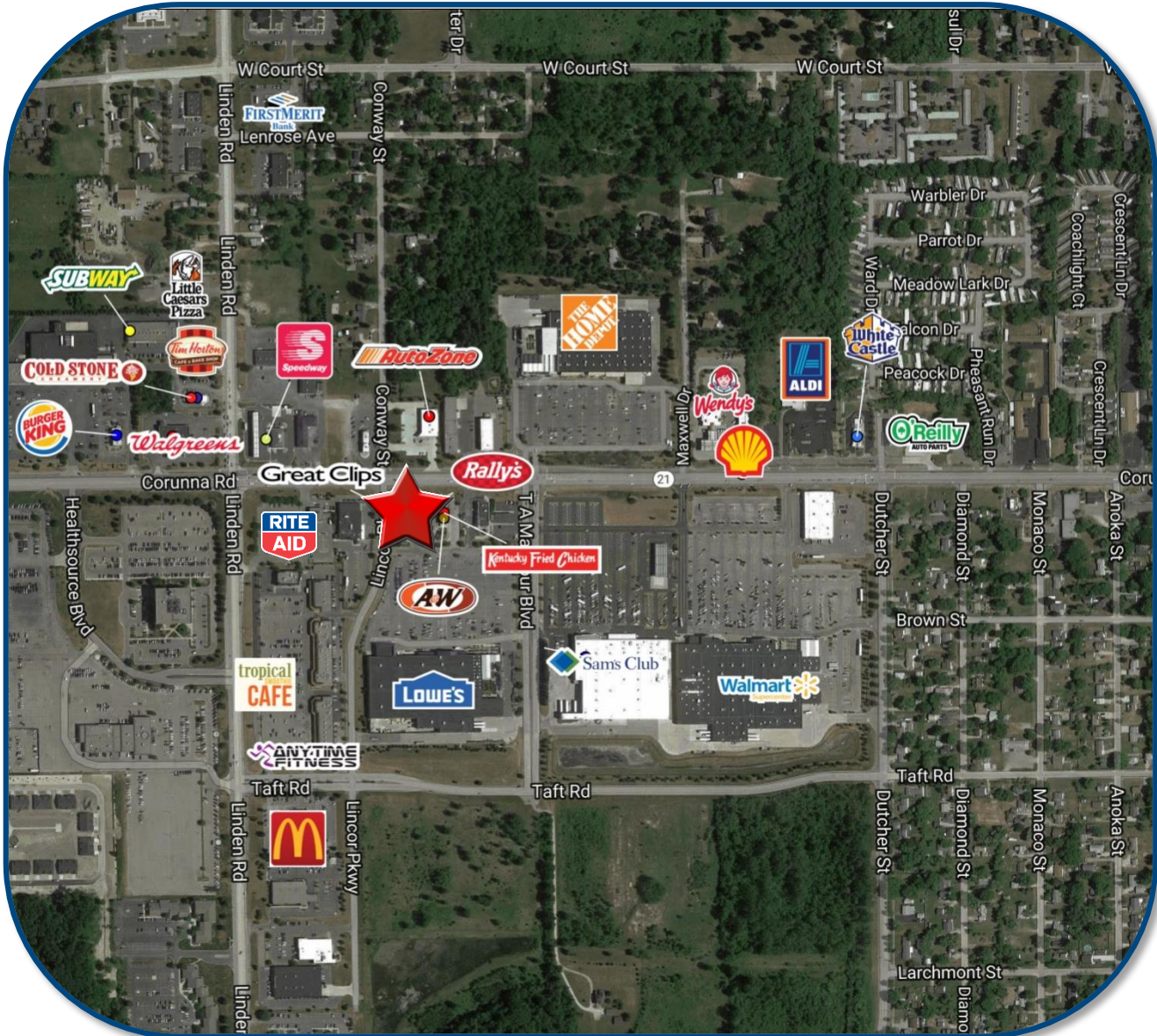
FOR LEASE > RETAIL

RETAIL AVAILABILITY

4455 CORUNNA ROAD | FLINT TOWNSHIP, MICHIGAN



> AREA MERCHANT MAP



LOU FRANGO

PHONE 248 540 1000 EXT 1678

EMAIL lou.frango@colliers.com



COLLIERS INTERNATIONAL

2 Corporate Dr. | Suite 300
Southfield, Michigan 48076

SUMMARY PROFILE

2000-2010 Census, 2016 Estimates with 2021 Projections

Calculated using Weighted Block Centroid from Block Groups



Lat/Lon: 43.0017/-83.7698

RS1

4455 Corunna Rd

Flint, MI 48532

1 mi radius

3 mi radius

5 mi radius

POPULATION	2016 Estimated Population	4,107	38,304	107,358
	2021 Projected Population	4,064	37,892	107,425
	2010 Census Population	4,310	40,821	112,967
	2000 Census Population	4,401	42,974	126,797
	Projected Annual Growth 2016 to 2021	-0.2%	-0.2%	-
	Historical Annual Growth 2000 to 2016	-0.4%	-0.7%	-1.0%
	2016 Median Age	45.5	39	38
HOUSEHOLDS	2016 Estimated Households	2,048	16,652	45,671
	2021 Projected Households	2,108	17,201	47,660
	2010 Census Households	2,043	16,876	45,802
	2000 Census Households	1,988	17,931	50,504
	Projected Annual Growth 2016 to 2021	0.6%	0.7%	0.9%
	Historical Annual Growth 2000 to 2016	0.2%	-0.4%	-0.6%
RACE AND ETHNICITY	2016 Estimated White	79.0%	60.0%	54.2%
	2016 Estimated Black or African American	13.5%	33.1%	40.0%
	2016 Estimated Asian or Pacific Islander	2.1%	2.0%	1.1%
	2016 Estimated American Indian or Native Alaskan	0.9%	0.5%	0.4%
	2016 Estimated Other Races	4.5%	4.4%	4.2%
	2016 Estimated Hispanic	3.9%	3.1%	3.1%
INCOME	2016 Estimated Average Household Income	\$46,657	\$52,846	\$46,350
	2016 Estimated Median Household Income	\$37,897	\$43,079	\$37,634
	2016 Estimated Per Capita Income	\$23,290	\$23,155	\$20,053
EDUCATION (AGE 25+)	2016 Estimated Elementary (Grade Level 0 to 8)	6.0%	3.2%	3.5%
	2016 Estimated Some High School (Grade Level 9 to 11)	8.0%	7.4%	9.7%
	2016 Estimated High School Graduate	29.5%	31.5%	34.5%
	2016 Estimated Some College	35.1%	30.5%	27.8%
	2016 Estimated Associates Degree Only	10.6%	9.3%	8.9%
	2016 Estimated Bachelors Degree Only	5.7%	11.3%	10.1%
	2016 Estimated Graduate Degree	5.1%	6.9%	5.6%
BUSINESS	2016 Estimated Total Businesses	718	2,782	6,220
	2016 Estimated Total Employees	6,817	31,706	77,206
	2016 Estimated Employee Population per Business	9.5	11.4	12.4
	2016 Estimated Residential Population per Business	5.7	13.8	17.3

This report was produced using data from private and government sources deemed to be reliable. The information herein is provided without representation or warranty.