

Office/Industrial Available at Gateway Metro Park



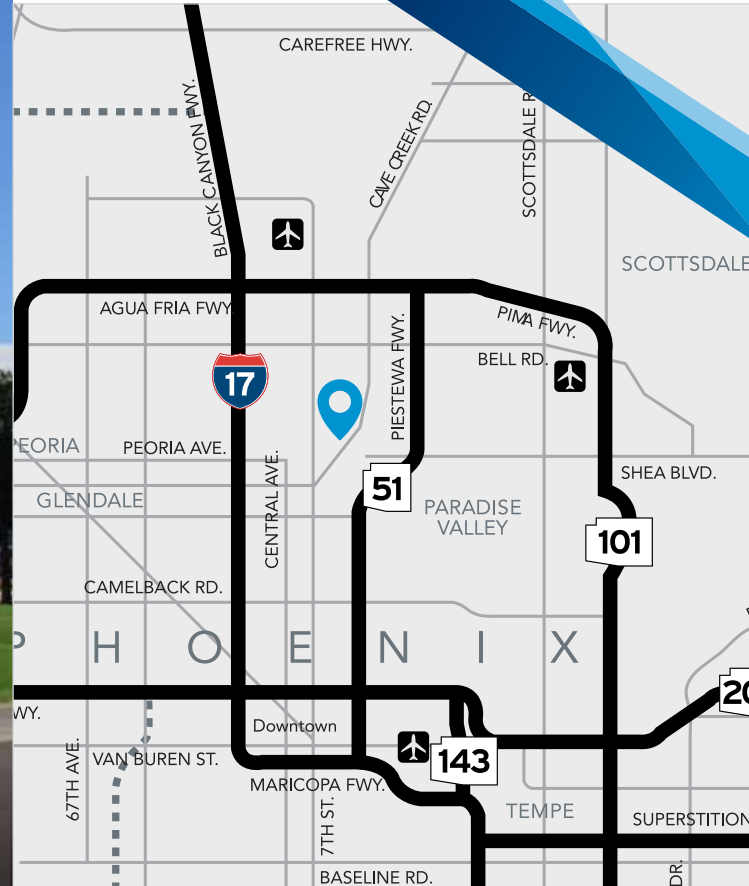
FOR LEASE | 2320 W Peoria Avenue, Phoenix | AZ

GatewayPropertiesAZ.com




Keri Scott
Vice President
+1 602 222 5116
+1 602 386 7153
keri.scott@colliers.com






Accelerating success.





2320 W Peoria Avenue, Phoenix | AZ

-  ±110,004 square foot of pure office and combination office/warehouse space
-  Peoria Road frontage suites available
-  Landlord maintains all HVAC and EVAP as part of base year operating expenses
-  1,704 to ±22,991 SF suites available

-  A-1 Zoning
-  3.53:1000 parking ratio
-  In proximity to retail amenities and freeway transportation network
-  High-tech architectural appeal
-  100% office suites available and 100% air-conditioned warehouse space available

±1,704 to ±22,991^{SF}

This document has been prepared by Colliers International for advertising and general information only. Colliers International makes no guarantees, representations or warranties of any kind, expressed or implied, regarding the information including, but not limited to, warranties of content, accuracy and reliability. Any interested party should undertake their own inquiries as to the accuracy of the information. Colliers International excludes unequivocally all inferred or implied terms, conditions and warranties arising out of this document and excludes all liability for loss and damages arising there from. This publication is the copyrighted property of Colliers International and/or its licensor(s). ©2019. All rights reserved.

Colliers International
 2390 East Camelback Road | Suite 100
 Phoenix, AZ 85016
colliers.com/arizona
 P: +1 602 222 5000





Available Suites

*A106 | ±1,704 SF

*B140-141 | ±8,025 SF (Virtual Tour)

*B142-144 | ±14,966 SF
Divisible into 5,616 SF and 9,350 SF

D131 | ±4,483 SF (Available with 30 days notice)

*Spec Suite

■ AVAILABLE OFFICE

■ AVAILABLE FLEX/INDUSTRIAL

● GRADE LEVEL DOORS

▲ HVAC

▲ EVAP

Contact us:

Keri Scott

Vice President

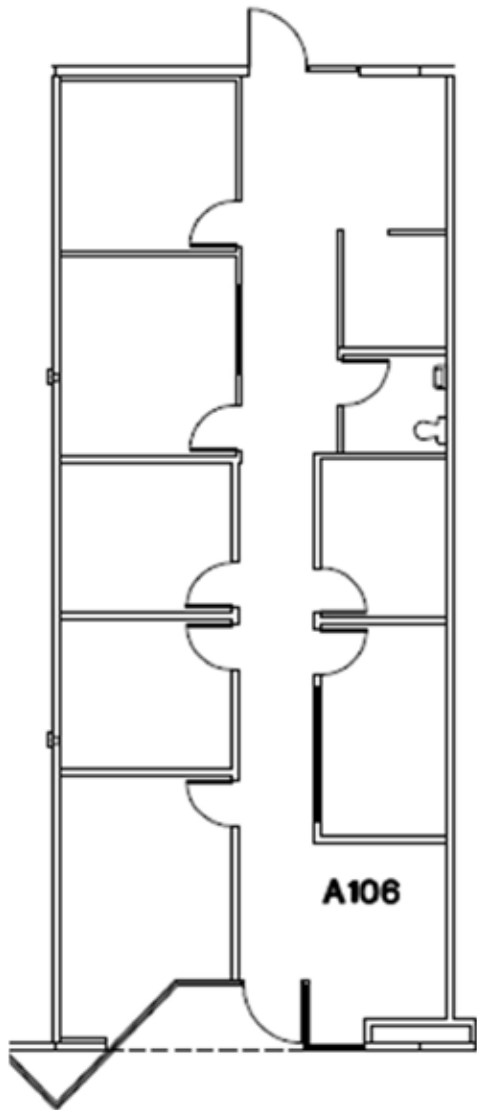
+1 602 222 5116

+1 602 386 7153

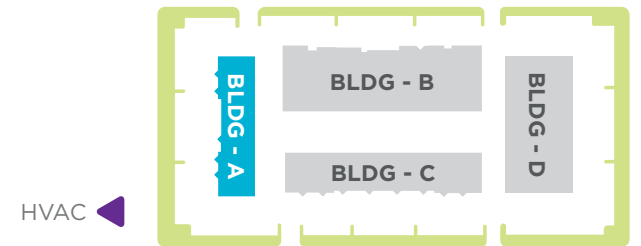
keri.scott@colliers.com



Accelerating success.



Suite A106
±1,704 SF



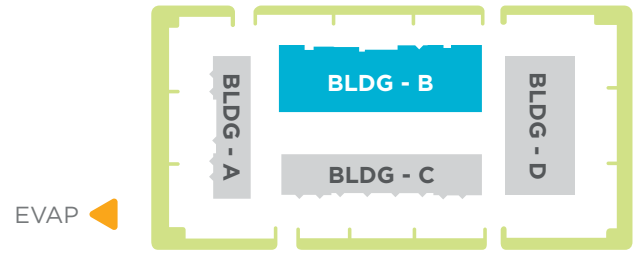
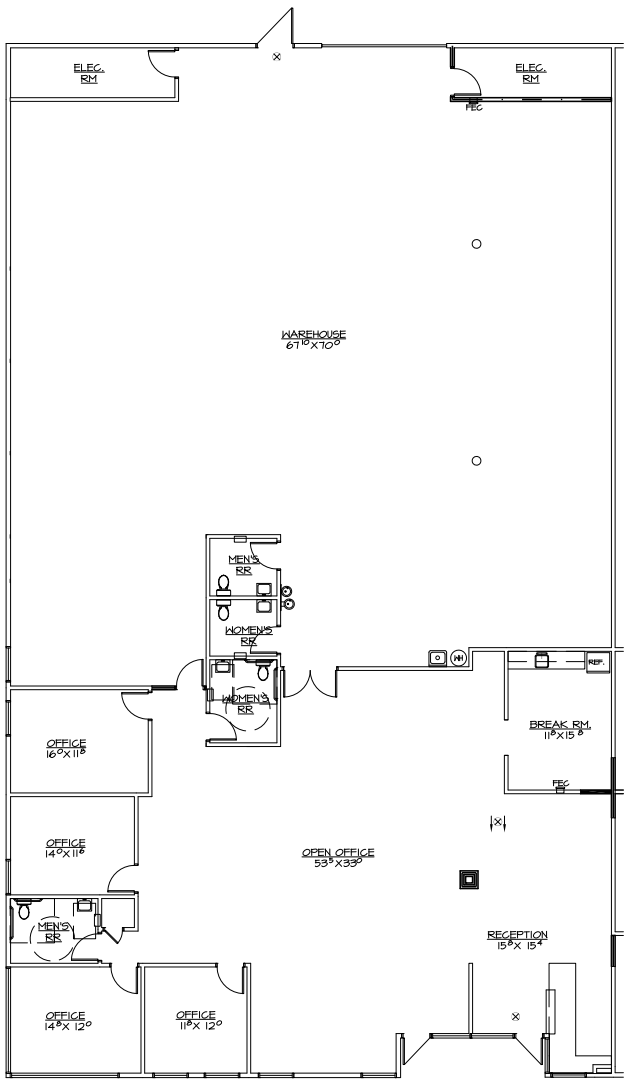
Contact us:

Keri Scott
Vice President
+1 602 222 5116
+1 602 386 7153
keri.scott@colliers.com



Accelerating success.

Suite B140-141
±8,025 SF



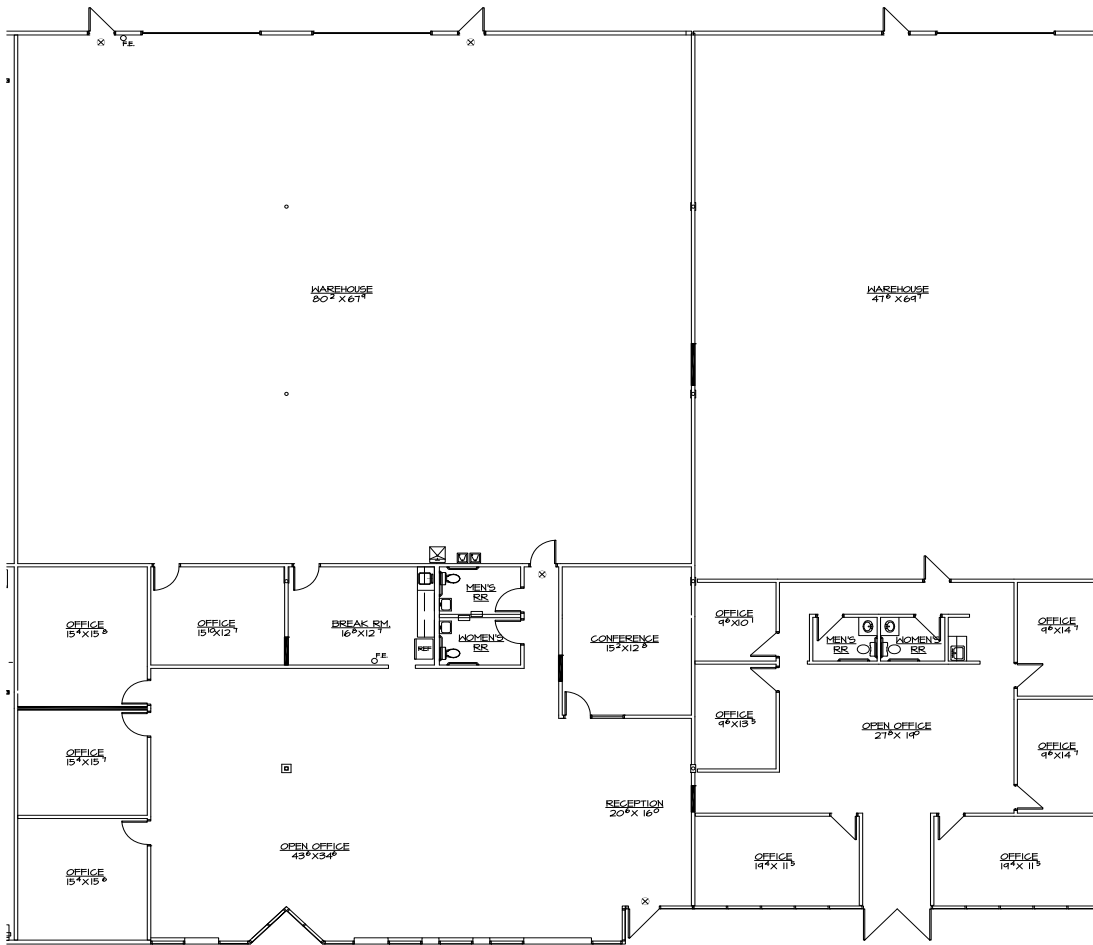
Click to walk space
with our Virtual Tour

Contact us:

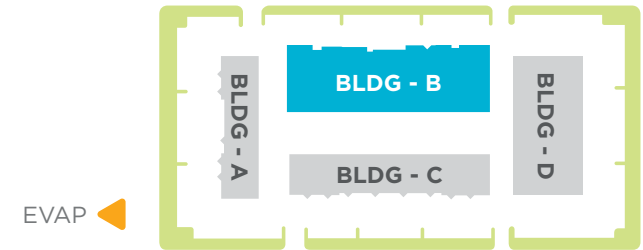
Keri Scott
Vice President
+1 602 222 5116
+1 602 386 7153
keri.scott@colliers.com



Accelerating success.



Suite B142-144
 ±14,966 SF
 Divisible to 5,616 and 9,350



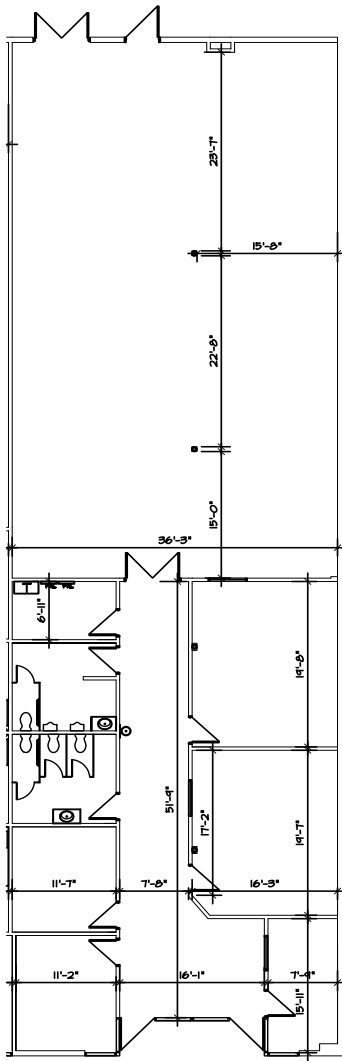
Contact us:

Keri Scott
 Vice President
 +1 602 222 5116
 +1 602 386 7153
 keri.scott@colliers.com



Accelerating success.

Suite D131
±4,483 SF



HVAC ◀

Photos coming soon

Contact us:

Keri Scott
Vice President
+1 602 222 5116
+1 602 386 7153
keri.scott@colliers.com



Accelerating success.