



**KBS**

[KBS.com](http://KBS.com)

**FOR MORE INFORMATION**

**Brandon Fugal**  
+1 801 947 8300  
[brandon.fugal@colliers.com](mailto:brandon.fugal@colliers.com)

**Jordan Wall**  
+1 801 453 6833  
[jordan.wall@colliers.com](mailto:jordan.wall@colliers.com)

**Josh Smith**  
+1 801 453 6823  
[josh.smith@colliers.com](mailto:josh.smith@colliers.com)

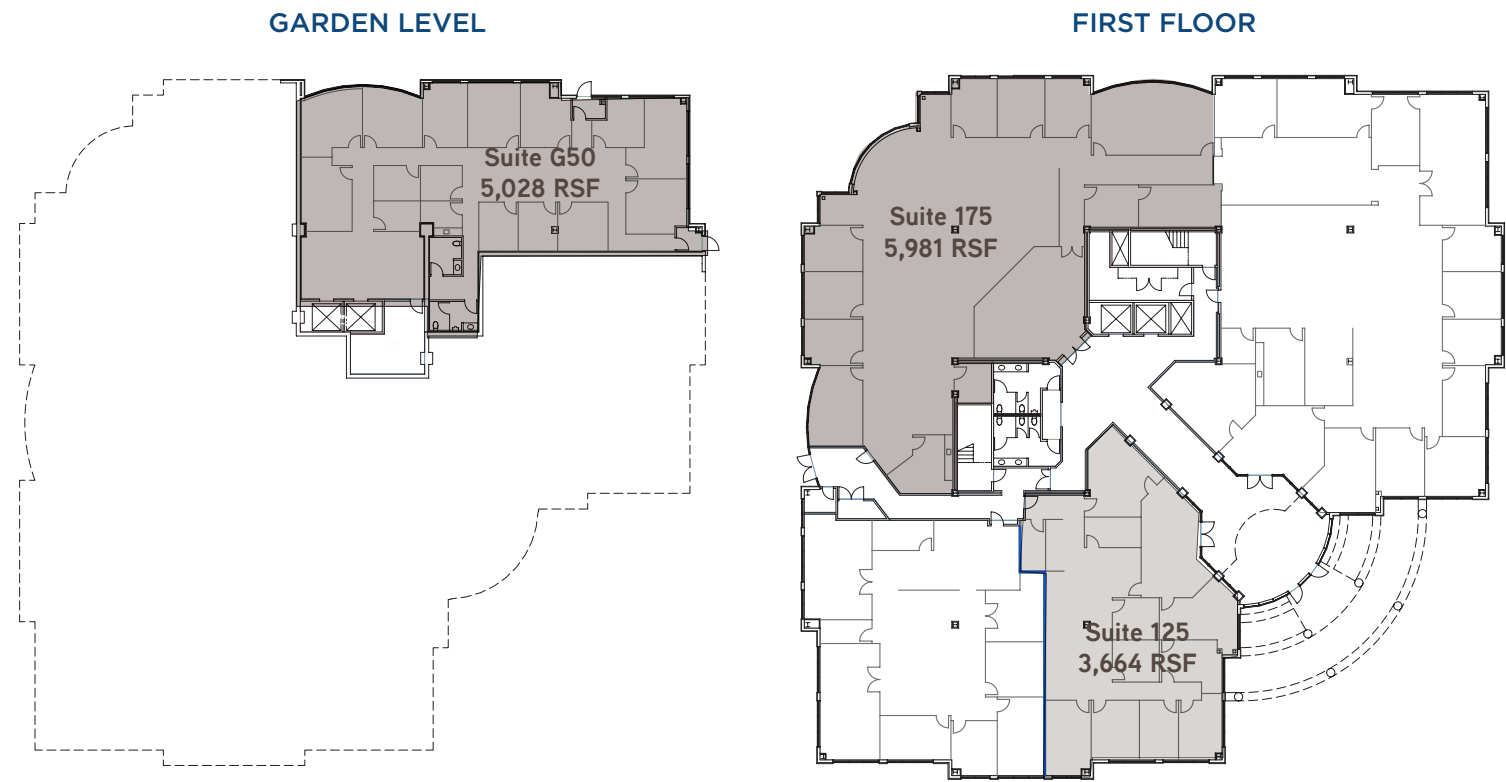


[www.colliers.com](http://www.colliers.com)





# Floor Plans



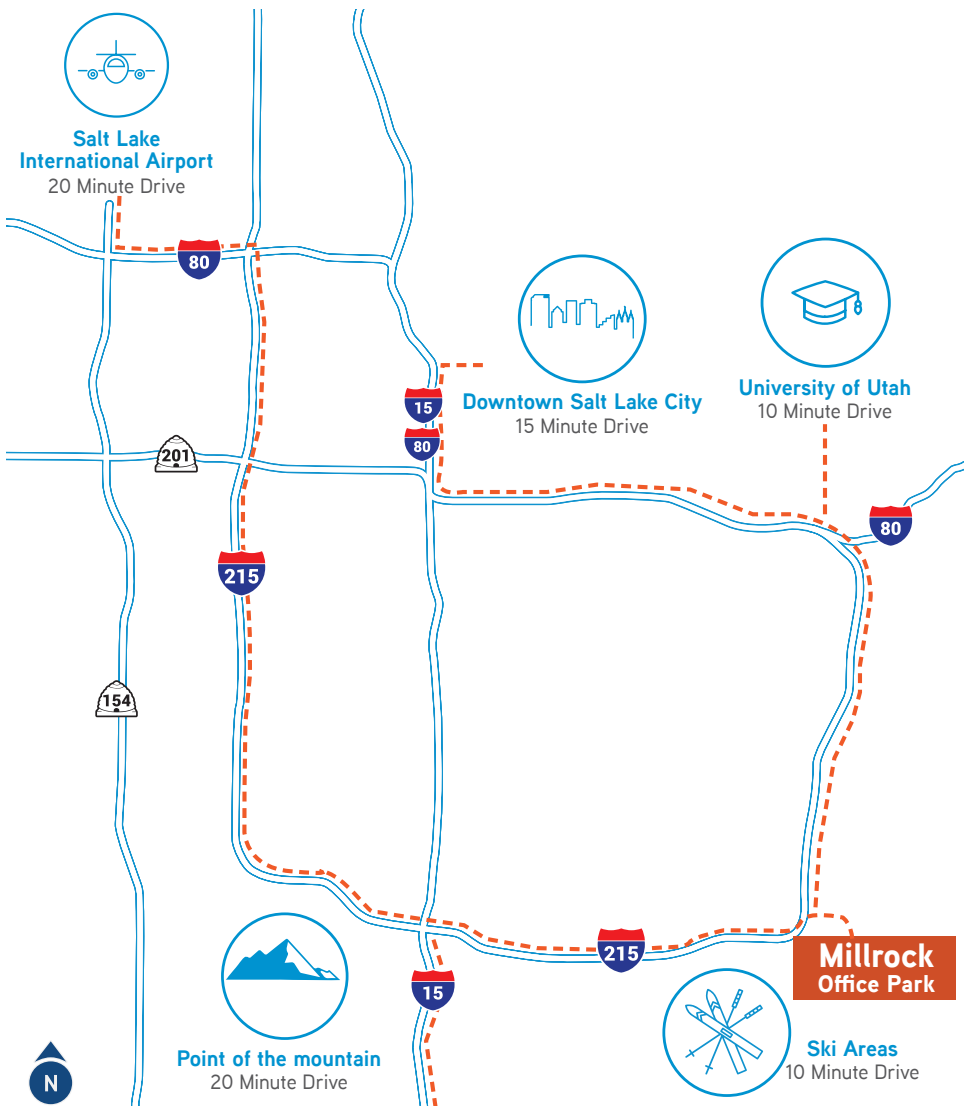
# Property Highlights

- Available suites:  
Suite G50: 5,028 RSF  
Suite 175: 5,981 RSF  
Suite 125: 3,664 RSF  
Total: 14,673 RSF
  - \$34.00/SF full service lease rate
- Fitness and conference facility newly completed
  - Unbeatable views of the Wasatch Mountains and the Salt Lake Valley
  - Millrock Park offers a 22 acre campus with over six acres of green space

# New Business Lounge and Fitness Center



# Lobby Upgrades Commencing August 2018



## RESTAURANTS



## HOTELS



## SERVICES/RETAIL

