

KBS

Millrock South
6550 South Millrock Drive





LOCAL AMENITIES

RESTAURANTS

- Rustic Chicken
- Spitz Mediterranean
- Starbuck's
- Trio Cafe
- Bandit's Grill & Bar
- Jimmy John's
- Coffee and Cocoa
- Dask's Greek Restaurant
- Happy Sumo
- Thai Basil
- Market Street Grill

HOTELS

- Hyatt Place
- Marriott Residence Inn
- Hampton Inn (Q4 2017)

SERVICES/RETAIL

- Powder House
- Zion's Bank
- Mountain America CU
- American Family Insurance
- Taylor Optical
- Health Food Store



KBS

KBS.com

FOR MORE INFORMATION

Brandon Fugal
801.947.8300
brandon.fugal@colliers.com

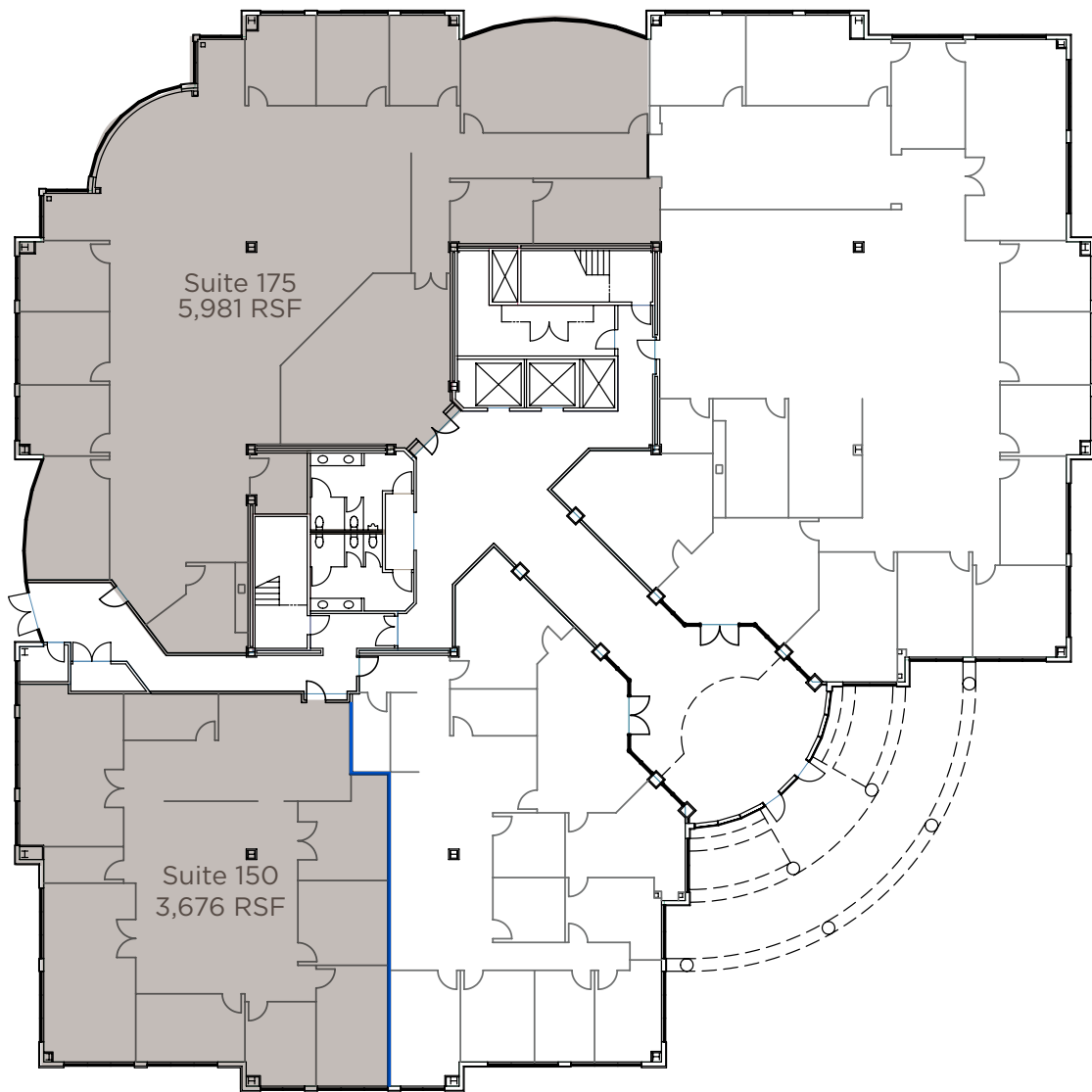
Jordan Wall
801.453.6833
jordan.wall@colliers.com



www.colliers.com

Floor Plans

FIRST FLOOR - 9,657 RSF TOTAL



Property Highlights

- Available suites:
Suite 175: 5,981 RSF
Suite 150: 3,676 RSF
Total: 9,657 RSF
- \$34.00/SF full service lease rate
- 28,200+ rentable square feet typical floor plates
- 3/1,000 parking ratio
- Fitness and conference facility newly completed
- Unbeatable views of the Wasatch Mountains and the Salt Lake Valley
- Millrock Park offers a 22 acre campus with over six acres of green space
- Immediate access to I-215, fifteen minute drive to Salt Lake International Airport, downtown
- Salt Lake City and ski resorts
- Walking distance to many amenities including: Hyatt Place, Starbucks, Cafe Zupas, Subway, Trio, Zions Bank, Happy Sumo and many more

COMMON AREA UPGRADES



NEW BUSINESS LOUNGE AND FITNESS CENTER

