

FOR LEASE > OFFICE SPACE

120 East 23rd Street

NEW YORK, NY 10010 *(Between Park & Lexington Avenues)*



BUILDING WITHIN A BUILDING



Available Space

Lower Level: 8,944 USF

Ground Floor: 14,360 USF

Entire 2nd Floor: 21,600 RSF

Entire 3rd Floor: 21,600 RSF

Contiguous: 66,504 SF

Entire 6th Floor: 21,600 RSF

Possession: 3rd Q-2019

Rent: Upon Request

Term: 10-15 years

All Uses and Divisions Considered

Space Features

Private entrance on 23rd Street

Additional/private entrance on 22nd Street

Internal elevator and internal staircase

Walking distance to multiple subway lines:



CONTACT

MICHAEL BERGER

Vice Chairman

Real Estate Salesperson

+1 212 716 3643

michael.berger@colliers.com

ROBERT GETREU

Executive Vice President

Real Estate Salesperson

+1 212 716 3697

robert.getreu@colliers.com

COLLIERS INTERNATIONAL NY LLC

666 Fifth Avenue

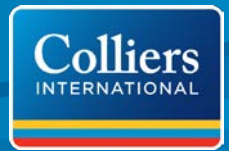
New York, NY 10103

www.colliers.com

FOR LEASE > OFFICE SPACE

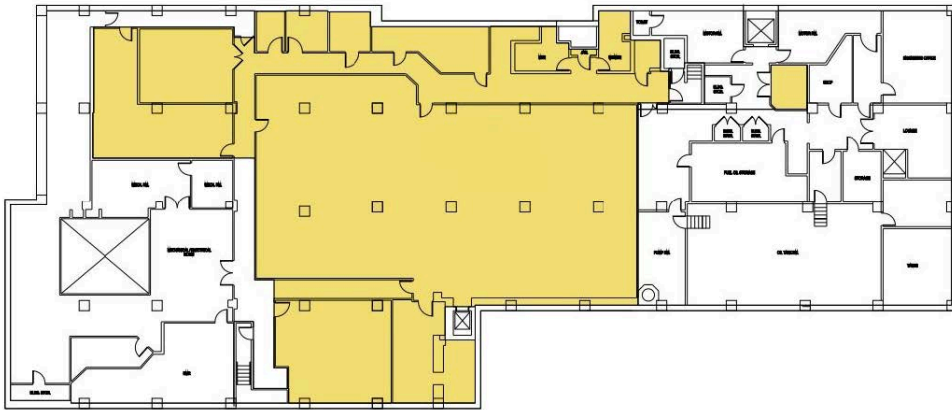
120 East 23rd Street

NEW YORK, NY 10010



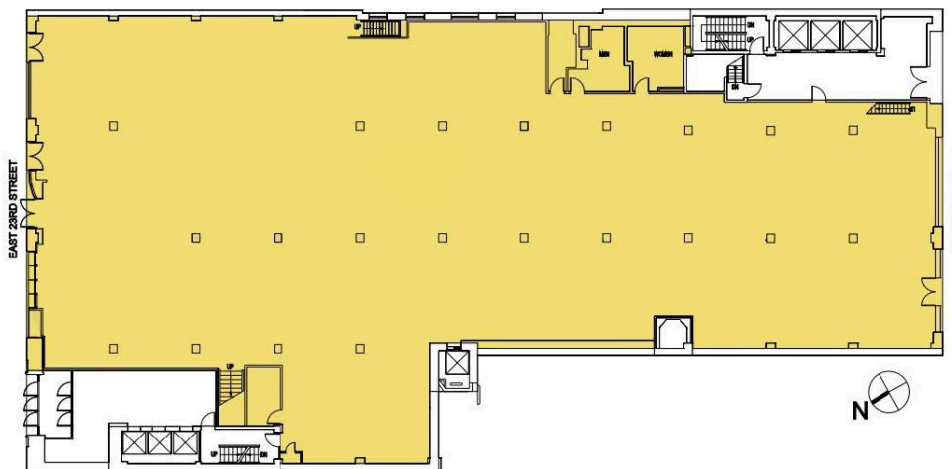
Lower Level

8,994 USF



Ground Floor

14,360 USF



Contact Us

MICHAEL BERGER

Vice Chairman

Real Estate Salesperson

+1 212 716 3643

michael.berger@colliers.com

ROBERT GETREU

Executive Vice President

Real Estate Salesperson

+1 212 716 3697

robert.getreu@colliers.com

COLLIERS INTERNATIONAL

666 Fifth Avenue

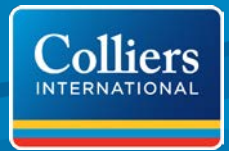
New York, NY 10103

www.colliers.com

FOR LEASE > OFFICE SPACE

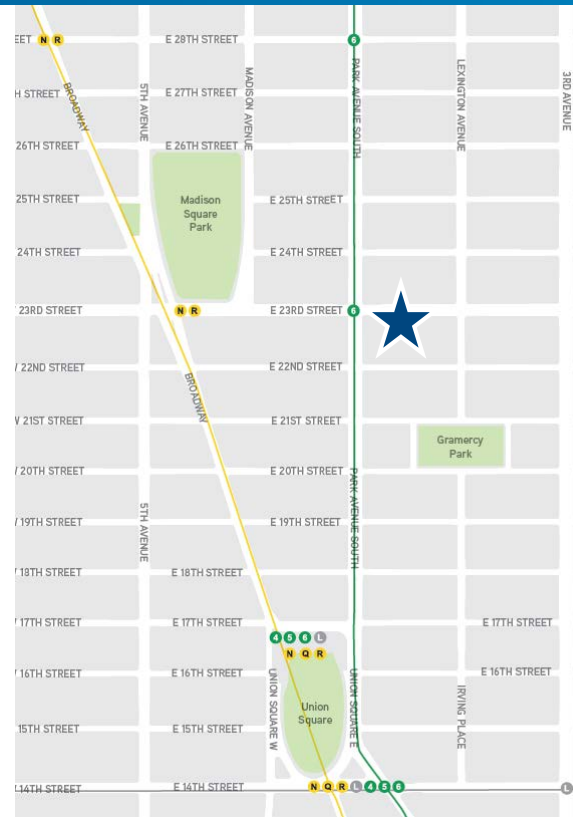
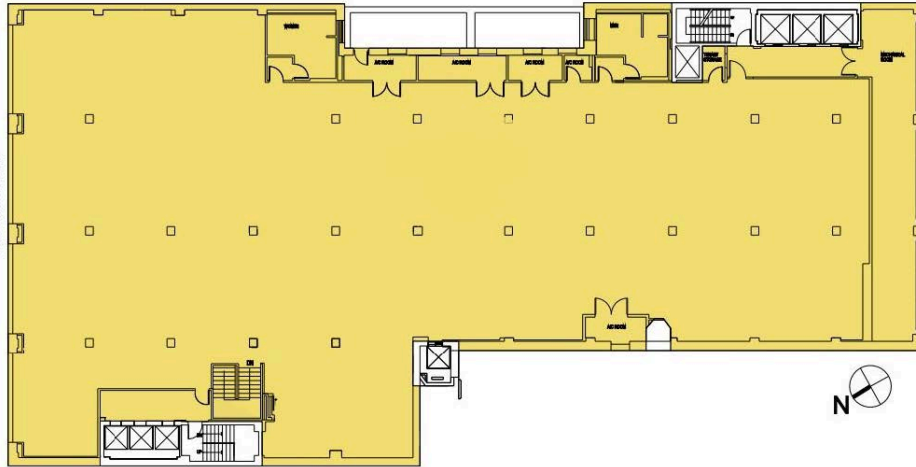
120 East 23rd Street

NEW YORK, NY 10010



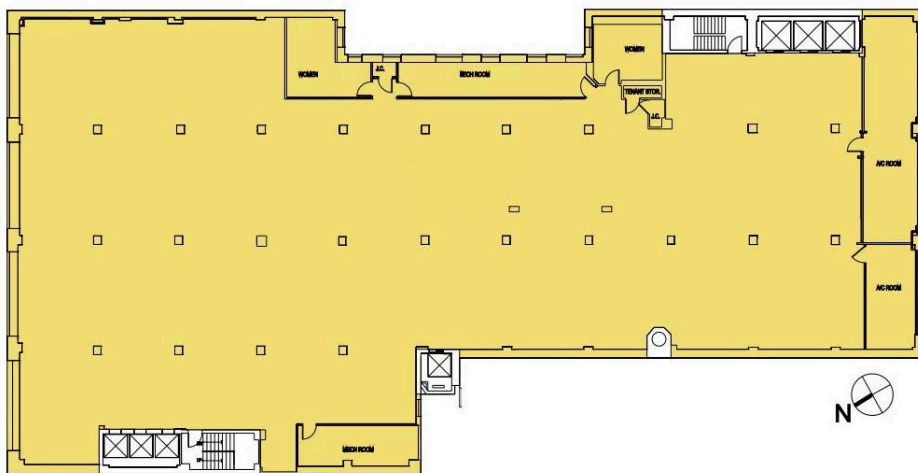
Entire 2nd Floor

21,600 RSF



Entire 3rd Floor

21,600 RSF



Contact Us

MICHAEL BERGER

Vice Chairman

Real Estate Salesperson

+1 212 716 3643

michael.berger@colliers.com

ROBERT GETREU

Executive Vice President

Real Estate Salesperson

+1 212 716 3697

robert.getreu@colliers.com

COLLIERS INTERNATIONAL

666 Fifth Avenue

New York, NY 10103

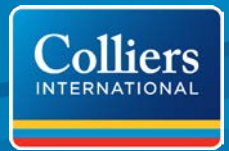
www.colliers.com

No representation is made as to the accuracy of the information furnished herein and same is submitted subject to errors, omissions, change of prices, rental, or other conditions, prior sale, lease, sublease, and/or withdrawal without notice. The furnishing of this information shall not be deemed a hiring. A commission in accordance with our principal's schedule of rates and conditions will be paid to the procuring Broker who executes our or our principal's brokerage agreement, subject to a fully consummated transaction upon terms and conditions acceptable to our principal.

FOR LEASE > OFFICE SPACE

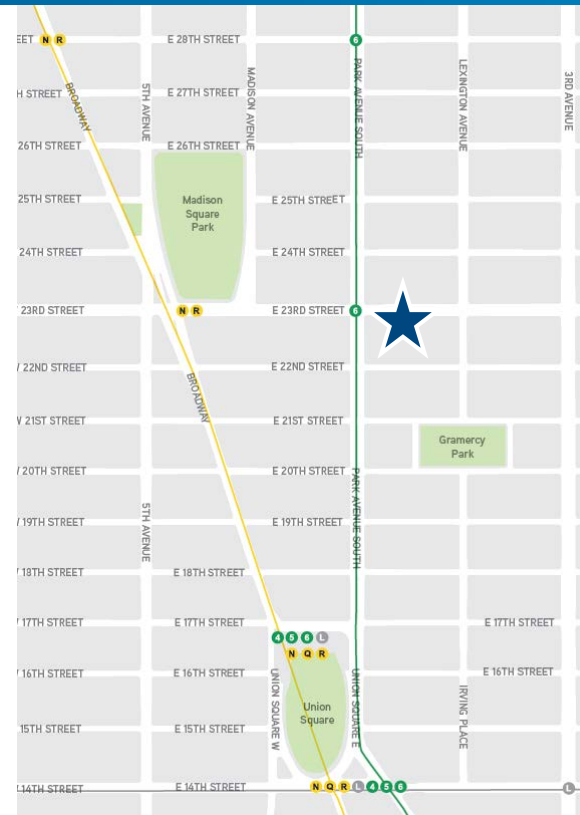
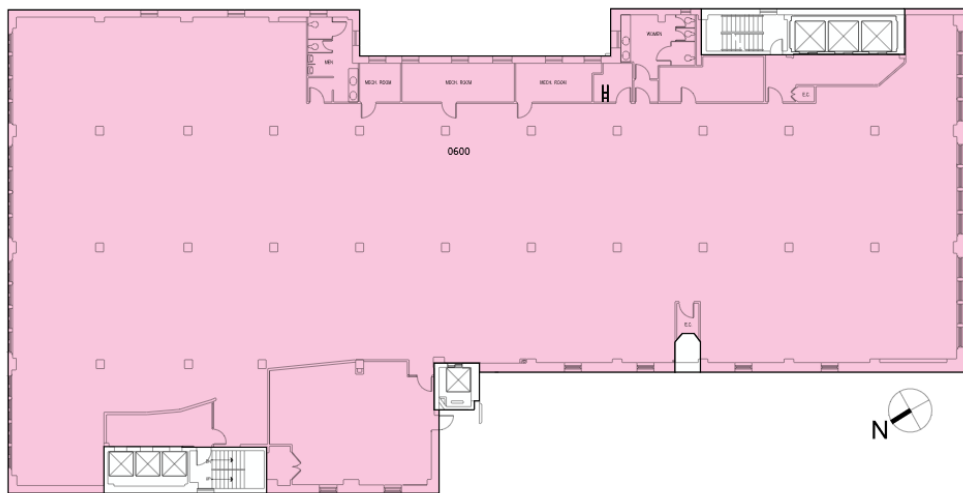
120 East 23rd Street

NEW YORK, NY 10010



Entire 6th Floor

21,600 RSF



Contact Us

MICHAEL BERGER

Vice Chairman

Real Estate Salesperson

+1 212 716 3643

michael.berger@colliers.com

ROBERT GETREU

Executive Vice President

Real Estate Salesperson

+1 212 716 3697

robert.getreu@colliers.com

COLLIERS INTERNATIONAL

666 Fifth Avenue

New York, NY 10103

www.colliers.com

No representation is made as to the accuracy of the information furnished herein and same is submitted subject to errors, omissions, change of prices, rental, or other conditions, prior sale, lease, sublease, and/or withdrawal without notice. The furnishing of this information shall not be deemed a hiring. A commission in accordance with our principal's schedule of rates and conditions will be paid to the procuring Broker who executes our or our principal's brokerage agreement, subject to a fully consummated transaction upon terms and conditions acceptable to our principal.