



Office For Lease

RYAN AMOS

WA Broker Lic.: 86328
ryan.amos@colliers.com
+1 (425) 409-4811



Colliers Bellevue
11225 SE 6th Street, Suite 240
Bellevue, WA 98004
colliers.com

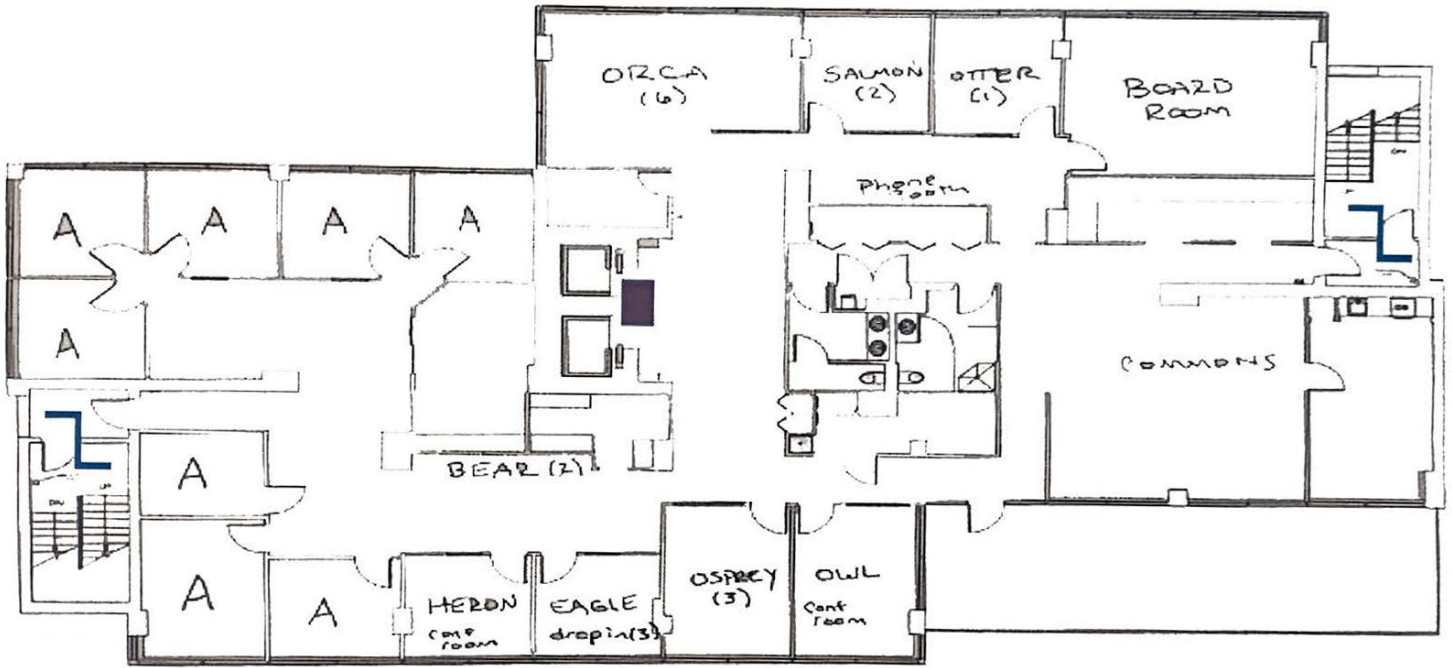
Office Space Available in the heart of Belltown

Sunrise Tower: 2225 4th Avenue
Seattle, WA 98121

- Entire 2nd floor: 5,576 SF
- Lots of natural light throughout
- Private phone booth in office
- Dedicated terrace
- Parking spaces are available
- Within walking distance to downtown, great restaurants, the Space Needle, Pike Place Market and the downtown public transit station.
- Contact broker for rate

Office For Lease

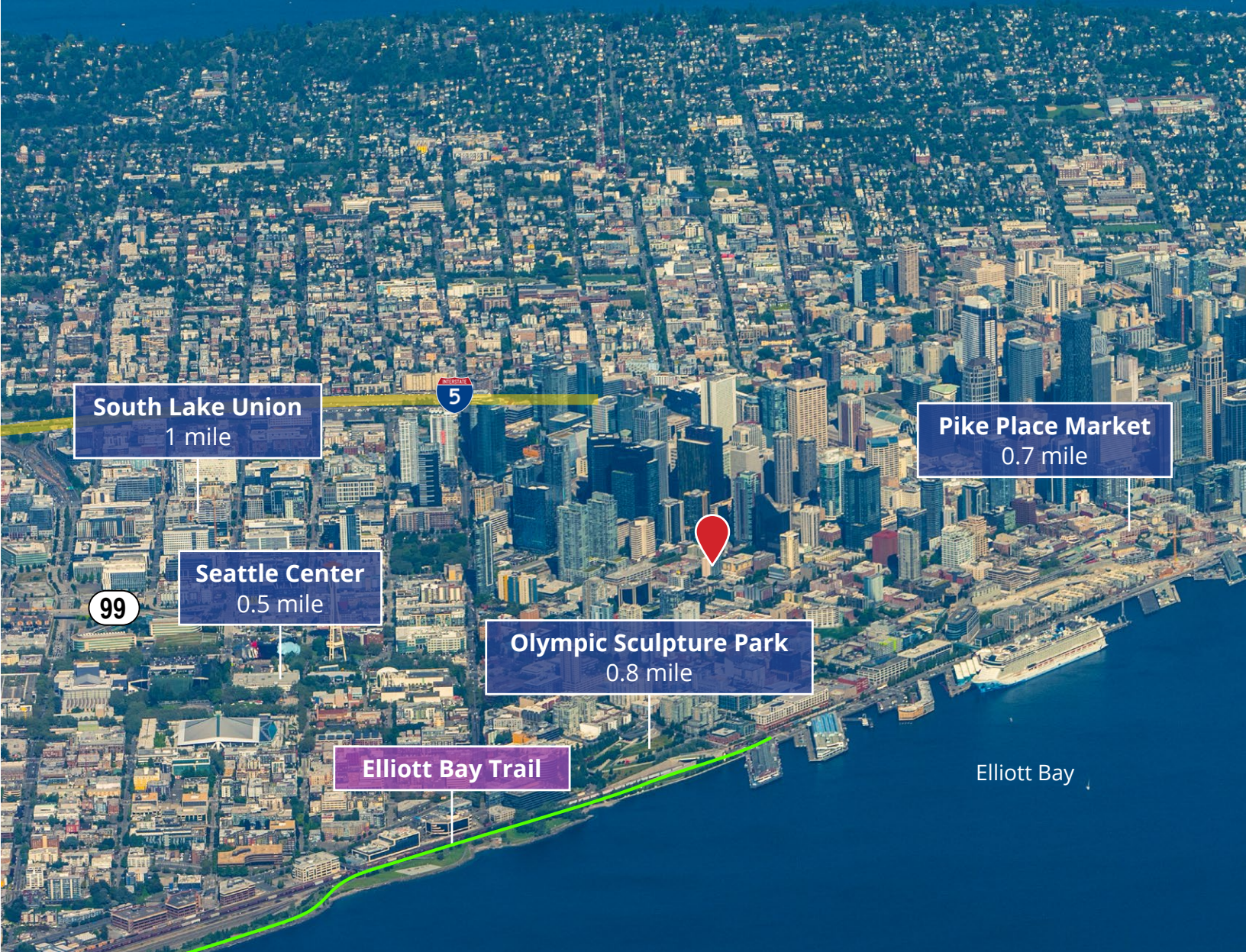
Sunrise Tower: 2225 4th Avenue Seattle, WA 98121



Office For Lease

Sunrise Tower: 2225 4th Avenue
Seattle, WA 98121

Colliers



Nestled between Seattle Center and the retail core, Belltown is a trendy, youthful neighborhood known for its music venues, cafés, boutiques, and downtown living.

RYAN AMOS
ryan.amos@colliers.com
+1 (425) 409-4811

This document has been prepared by Colliers International for advertising and general information only. Colliers International makes no guarantees, representations or warranties of any kind, expressed or implied, regarding the information including, but not limited to, warranties of content, accuracy and reliability. Any interested party should undertake their own inquiries as to the accuracy of the information. Colliers International excludes unequivocally all inferred or implied terms, conditions and warranties arising out of this document and excludes all liability for loss and damages arising there from. This publication is the copyrighted property of Colliers International and/or its licensor(s). © 2024. All rights reserved.