

FOR LEASE > OFFICE SPACE

# 2901 Lakeview Road

LAWRENCE, KANSAS



## Property Description

This two-story office building is well-located on Lakeview Road, with easy access to I-70, Highway 24/40 and K-10. There are two sizable suites available. The first floor suite is approximately 8,900± SF and consists of a combination of open areas, conference rooms, private offices, a large break room area and restrooms. The upper level suite, accessible via elevator or stairs, is 12,000± SF and offers a similar configuration of space. The site has excellent parking and is on the city bus route. Suites may be leased separately or together.

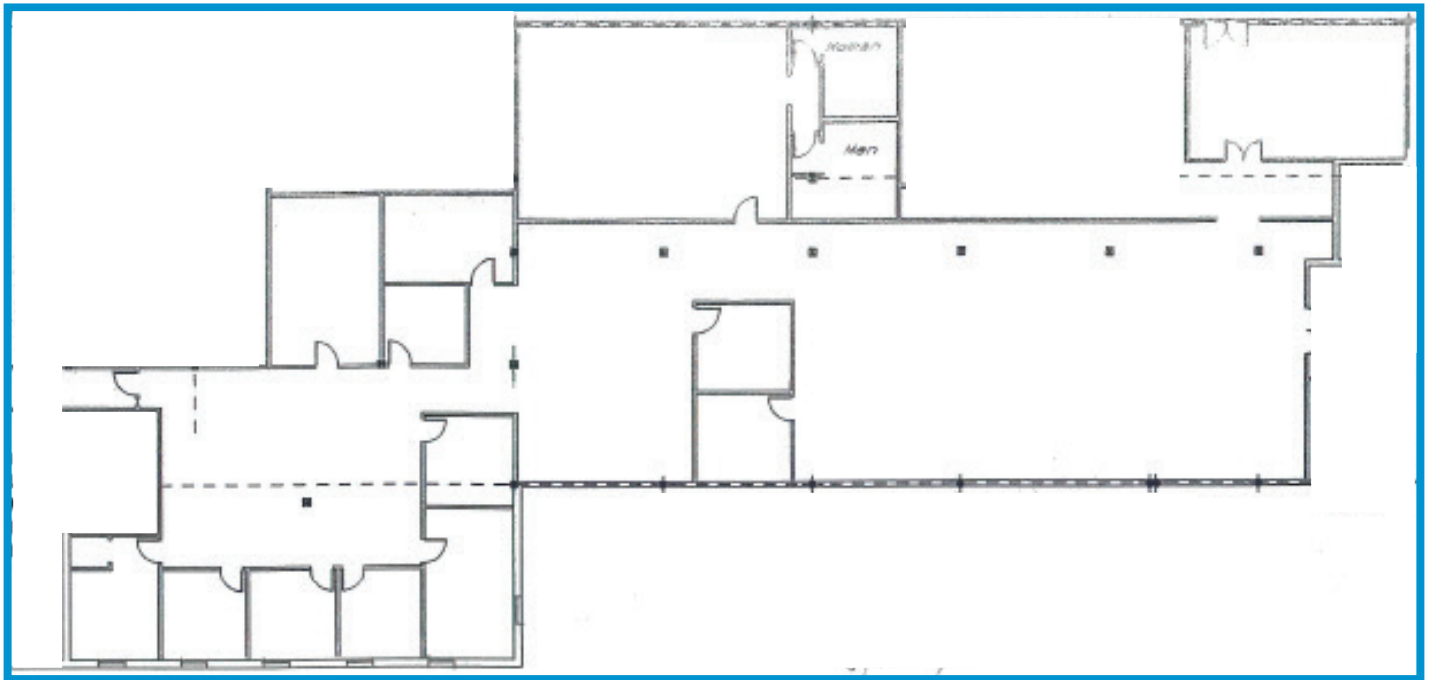
## Property Highlights

- > Total available space: 20,000± SF
- > Two suites: 8,900± SF and 12,000± SF
- > Lease rate: \$12.00 PSF, gross

AGENT: MARILYN BITTENBENDER, SIOR, CCIM  
+1 785 865 3562  
LAWRENCE, KS  
marilyn.bittenbender@colliers.com

COLLIERS INTERNATIONAL  
805 New Hampshire, Suite C  
Lawrence, KS 66044  
www.colliers.com

## 2901 Lakeview > First Floor Plan



## 2901 Lakeview > Second Floor Plan

