

FOR LEASE > COMMERCIAL/WAREHOUSE SPACE

Toronto Warehouse

360 Toronto Street | St. Paul, MN 55102



Accelerating success.



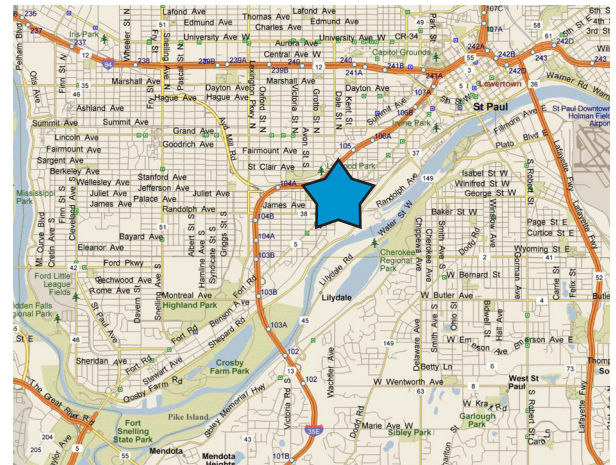
BUILDING AMENITIES

- > 43,320 total SF multi-tenant building
- > 2.3 acre site with large off street parking and loading areas
- > Abundant glass, T-8 lighting
- > Many different potential uses for the space
- > Direct access and visibility to West 7th Street; 11,200 vpd
- > One and a half (1.5) miles to St. Paul CBD and four and a half (4.5) miles to MSP International Airport
- > Locally owned and managed
- > Rental Rates: Suite 2- \$8.00* PSF blended gross
Suite 9- \$2.00* PSF blended gross
*Includes everything but utilities

Availability:

- > Suite 2*: 3,004 SF of commercial industrial space, 8' by 8' grade level door
- > Suite 9*: 5,004 SF of mezzanine storage space, man door access only
- *Suites 2 & 9 can be combined

Located in the West End neighborhood of St. Paul. Across the street from the Schmidt Artist Lofts. Space now available at this historically significant restoration/redevelopment of the former Schmidt Brewing truck garage and horse stables. Original building dates to 1868 with the garage constructed in 1930 and building was restored in 2001.



CONTACT US

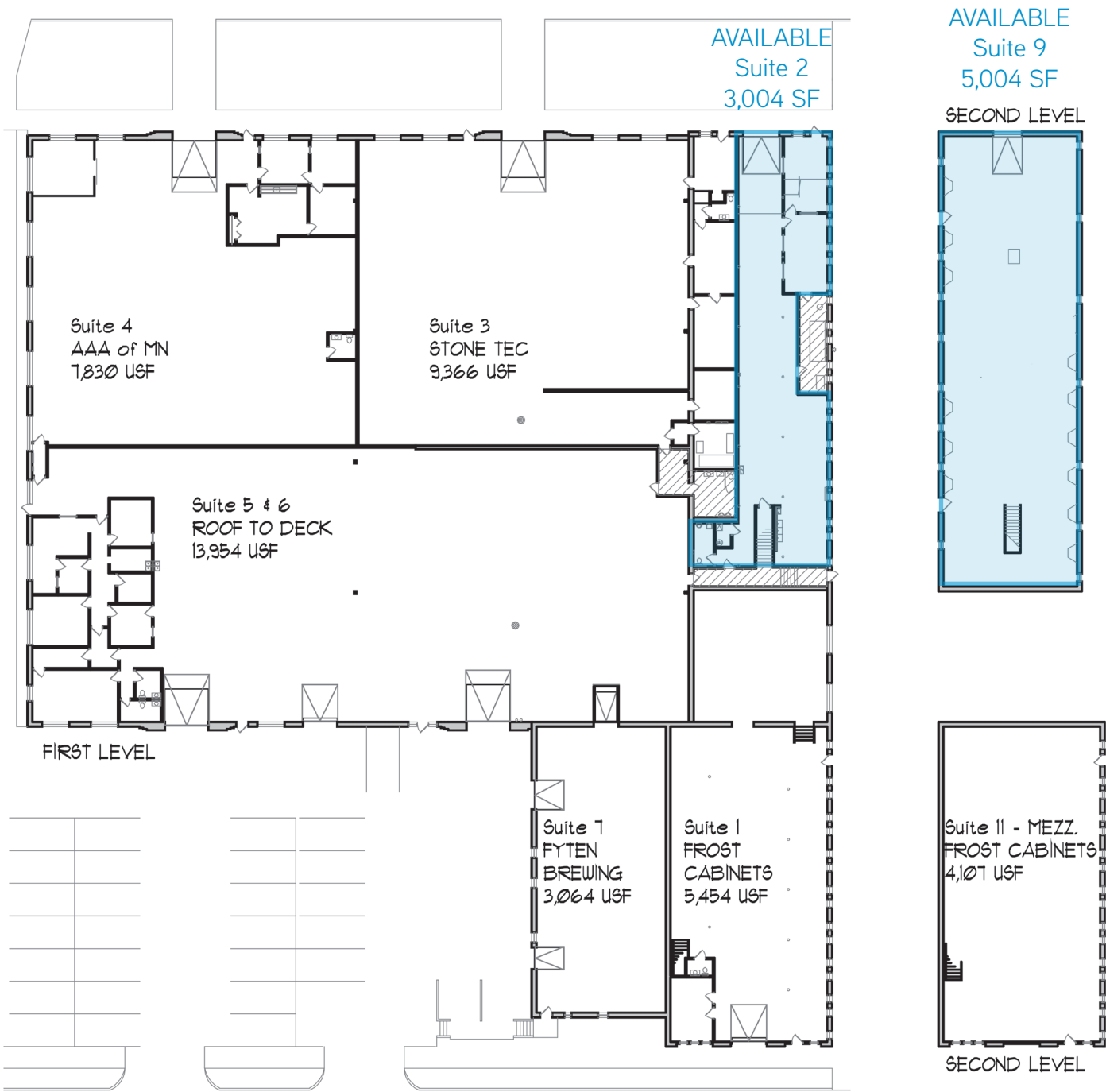
Brian Doyle
952 837 3008
brian.doyle@colliers.com

Eric Batiza
952 837 3007
eric.batiza@colliers.com

Sam Svendahl
952 837 3025
sam.svendahl@colliers.com



TORONTO WAREHOUSE > BUILDING KEY PLAN



FOR LEASE > COMMERCIAL/WAREHOUSE/PRODUCTION SPACE

Toronto Warehouse

360 Toronto Street | St. Paul, MN 55102



Accelerating success.



CONTACT US

Brian Doyle
952 837 3008
brian.doyle@colliers.com

Eric Batiza
952 837 3007
eric.batiza@colliers.com

Sam Svendahl
952 837 3025
sam.svendahl@colliers.com

