

FOR SALE > ±2 ACRES



PARK CENTRAL MEDICAL PARK

1414 SUNSET DRIVE, COLUMBIA, SOUTH CAROLINA 29203



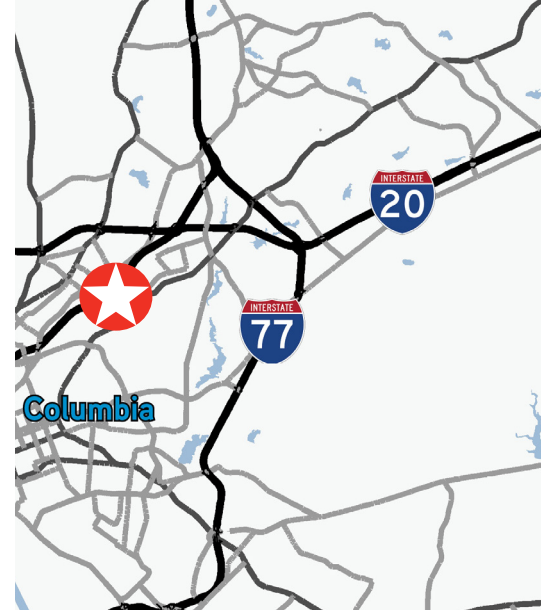
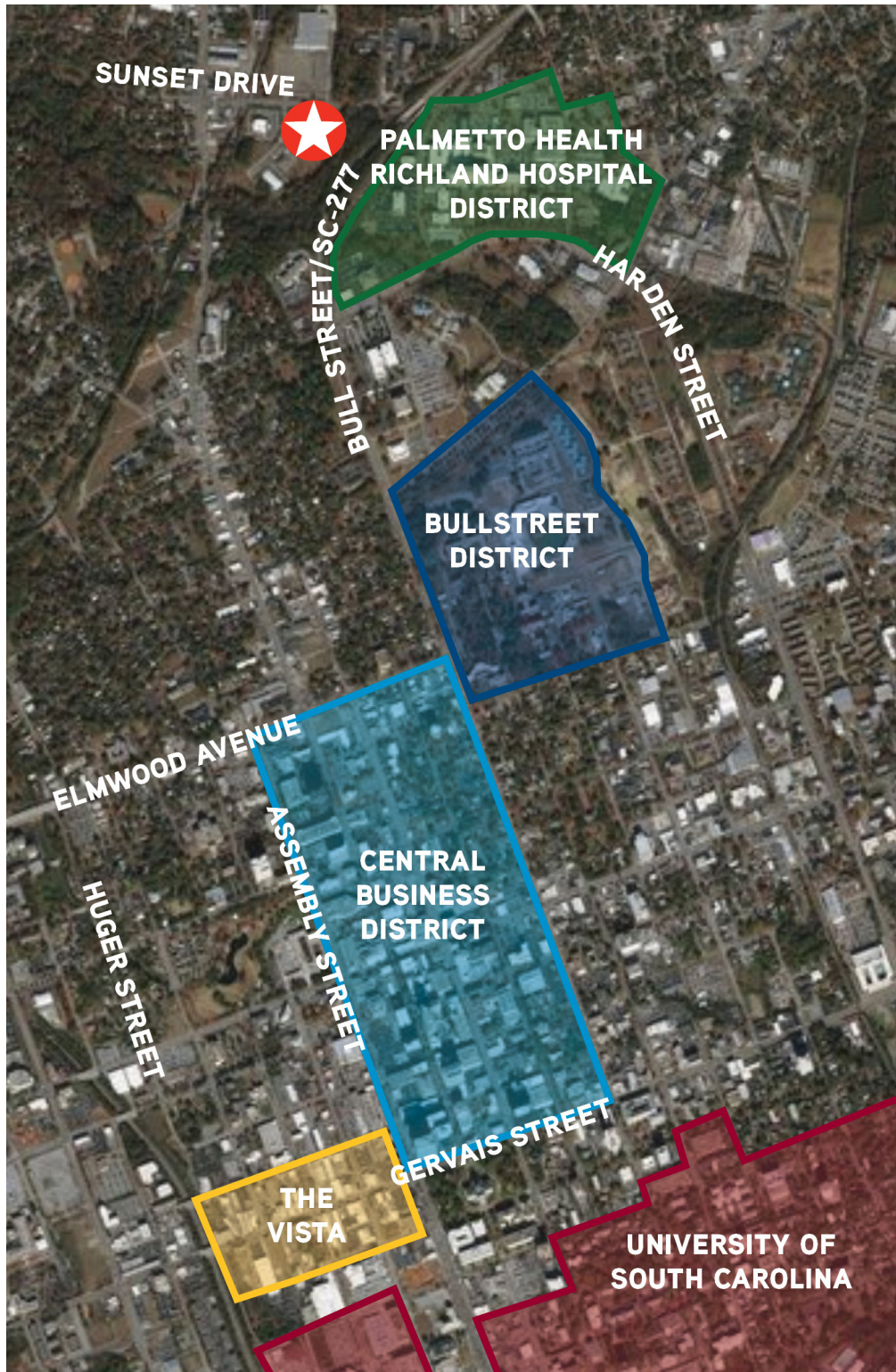
Property Details

- > Located in the Park Central Medical Park, a 24-acre, master-planned office park strategically located near Palmetto Health Richland Campus, the University of South Carolina School of Medicine offices, Columbia's Central Business District and the new BullStreet District master planned development
- > Park Central offers protective covenants, architectural review, extensive landscaping and attractive, controlled signage throughout
- > All infrastructure is in place, including roads, streetlights, curbs, gutters, storm-water drainage, off-site detention, sewer, water, electricity, cable, fiber optic, and phone lines
- > Ideally suited for a medical office, but zoning allows for a multitude of uses
- > **Acreage:** ±2 acres
- > **Frontage:** 475' on Sunset Drive
- > **Tax map number:** R09115-01-08
- > **Zoning:** C-3, General Commercial District (City of Columbia)
- > **Price:** \$775,000.00

CRAIG WAITES
803 401 4224 DIRECT
craig.waites@colliers.com

COLLIERS INTERNATIONAL
1301 Gervais Street, Suite 600
Columbia, South Carolina 29201
www.colliers.com

1414 Sunset Drive > Aerial View



Contact Us

CRAIG WAITES

803 401 4224 DIRECT

craig.waites@colliers.com

COLLIERS INTERNATIONAL
1301 Gervais Street, Suite 600
Columbia, SC 29201

www.colliers.com

This document has been prepared by Colliers International for advertising and general information only. Colliers International makes no guarantees, representations or warranties of any kind, expressed or implied, regarding the information including, but not limited to, warranties of content, accuracy and reliability. Any interested party should undertake their own inquiries as to the accuracy of the information. Colliers International excludes unequivocally all inferred or implied terms, conditions and warranties arising out of this document and excludes all liability for loss and damages arising there from. This publication is the copyrighted property of Colliers International and/or its licensor(s). ©2012. All rights reserved.

