

FOR LEASE

CHASE TOWER

111 E. WISCONSIN AVENUE
MILWAUKEE, WI

LYLE LANDOWSKI
414 278 6827
lyle.landowski@colliers.com

BEN ANDERSON
414 278 6868
ben.anderson@colliers.com

BRANDON CIEBELL
414 982 6989
brandon.ciebell@colliers.com



CHASE TOWER

We Have You Covered.





LOCATION

Chase Tower is the definition of a “bull’s-eye” location. Located at the intersection where Milwaukee’s commerce began, it is the heart of the central business district and is less than two blocks from the Historic Third Ward and Westtown.

CONNECTIVITY

Chase Tower is the gateway to Milwaukee’s 1.75 mile skywalk system.

PARKING

In addition to its own 800-stall parking garage that spans a full city block, Chase Tower is connected to the city’s largest parking structure- the 1,700 stall Grand Avenue Structure- and a total of 10,000 stalls via the skywalk.

NEARBY AMENITIES

Chase Tower is connected to 28 restaurants, 18 coffee shops, 6 fitness centers, 5 hotels and much more!

FLOOR PLATE

With a floor plate of over 22,000 SF, Chase Tower plans more efficiently than any of its competitors, which means you save even more money.

WATER

Milwaukee is known as the fresh water capitol of the world, and Chase Tower is no stranger to H2O. With 2 full city blocks of riverfront property and lake views, tenants will feel right at home at Chase.

VALUE

Did we mention we are also the most economical Class A option in the CBD?

*From
connectivity
to parking,
amenities
to value -
we can’t be
beat.*

PROPERTY HIGHLIGHTS

- › Large blocks of space available
- › 800-stall attached parking garage
- › Exceptional views of the downtown, Lake Michigan and the Milwaukee River
- › Located on Milwaukee's Riverwalk
- › Connected to the skywalk system
- › Ideally-sized floorplate with minimal columns allows for an abundance of window lines
- › On-Site Property Management, Building Engineers and Security
- › Significant upgrades to the lobby and common areas are underway

BUILDING SIZE

477,772 SF

LEASE RATE

Base Rent: \$11.00 - 12.00 / RSF

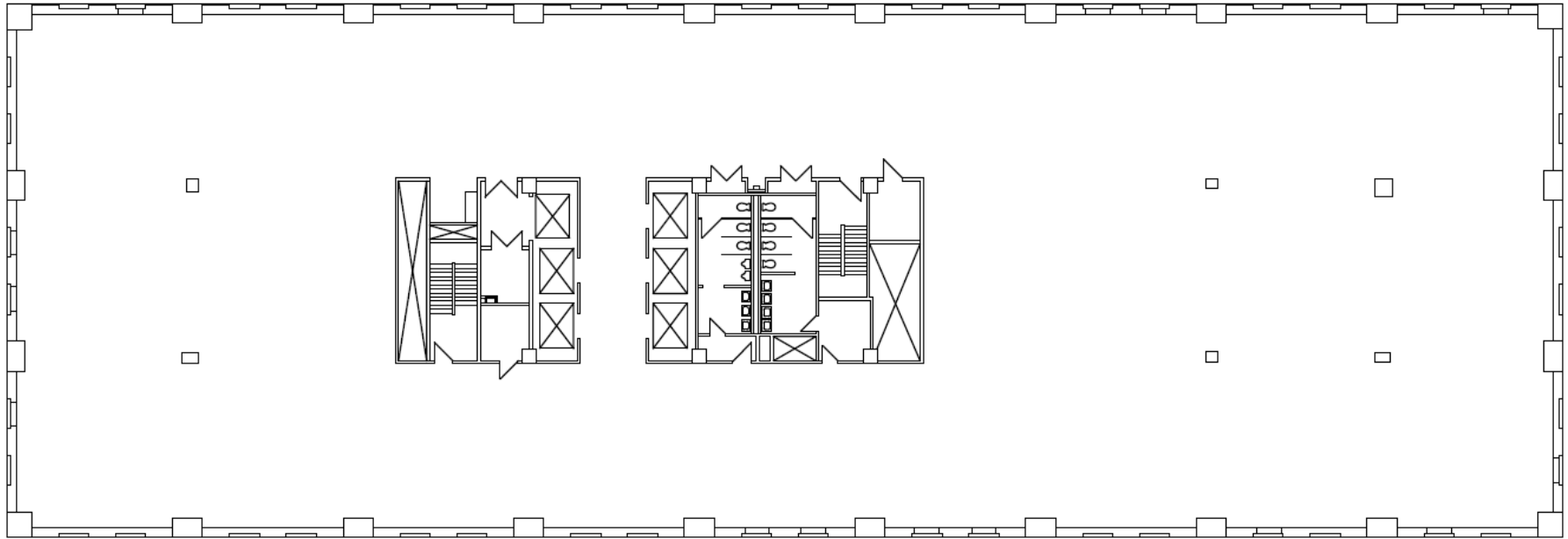
OPEX: \$10.00 / RSF (2017 estimate)

AVAILABILITY

SUITE 1000	20,909 SF
SUITE 1230	1,134 SF
SUITE 1300	7,264 SF
SUITE 1500	6,252 SF
SUITE 1560	958 SF
SUITE 1600	22,250 SF
SUITE 1710	1,586 SF
SUITE 1715	2,219 SF
SUITE 1725	3,570 SF
SUITE 1750	1,851 SF
SUITE 1760	3,902 SF
SUITE 1765	700 SF
SUITE 1770	1,278 SF
SUITE 1850	12,710 SF
TOTAL	86,583 SF

FLOOR PLATE

22,250 SF





Exterior Monument Signage Available



CHASE TOWER

- Tenant A
- Tenant B
- Tenant C
- Tenant D
- Tenant E
- Tenant F

CHASE TOWER

EMPOWER

THE SKYWALK

The 1.75 mile skywalk system in downtown Milwaukee connects Chase tower to an abundance of shopping, dining, parking, hotels and conference space on both sides of the river.



Over 10,000
Parking Spaces



28 Eateries



18 places to
grab a cup of
coffee



STONE
CREEK
COFFEE
MILWAUKEE



6 Fitness
Centers



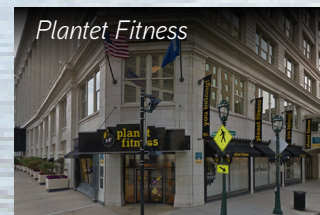
11 Banks
& ATMs



5 Hotels



HYATT
REGENCY



FOR LEASE | CHASE TOWER



LYLE LANDOWSKI
414 278 6827
lyle.landowski@colliers.com

BEN ANDERSON
414 278 6868
ben.anderson@colliers.com

BRANDON CIEBELL
414 982 6989
brandon.ciebell@colliers.com



COLLIERS INTERNATIONAL | 833 E. Michigan Street, Suite 500 | Milwaukee, WI 53202 | 414 276 9500 | www.colliers.com

This document/email has been prepared by Colliers International for advertising and general information only. Colliers International makes no guarantees, representations or warranties of any kind, expressed or implied, regarding the information including, but not limited to, warranties of content, accuracy and reliability. Any interested party should undertake their own inquiries as to the accuracy of the information. Colliers International excludes unequivocally all inferred or implied terms, conditions and warranties arising out of this document and excludes all liability for loss and damages arising there from. This publication is the copyrighted property of Colliers International and /or its licensor(s). © 2016. All rights reserved. This communication is not intended to cause or induce breach of an existing listing agreement. Colliers Macaulay Nicolls Brokerage Inc. (Vancouver). *Personal Real Estate Corporation.