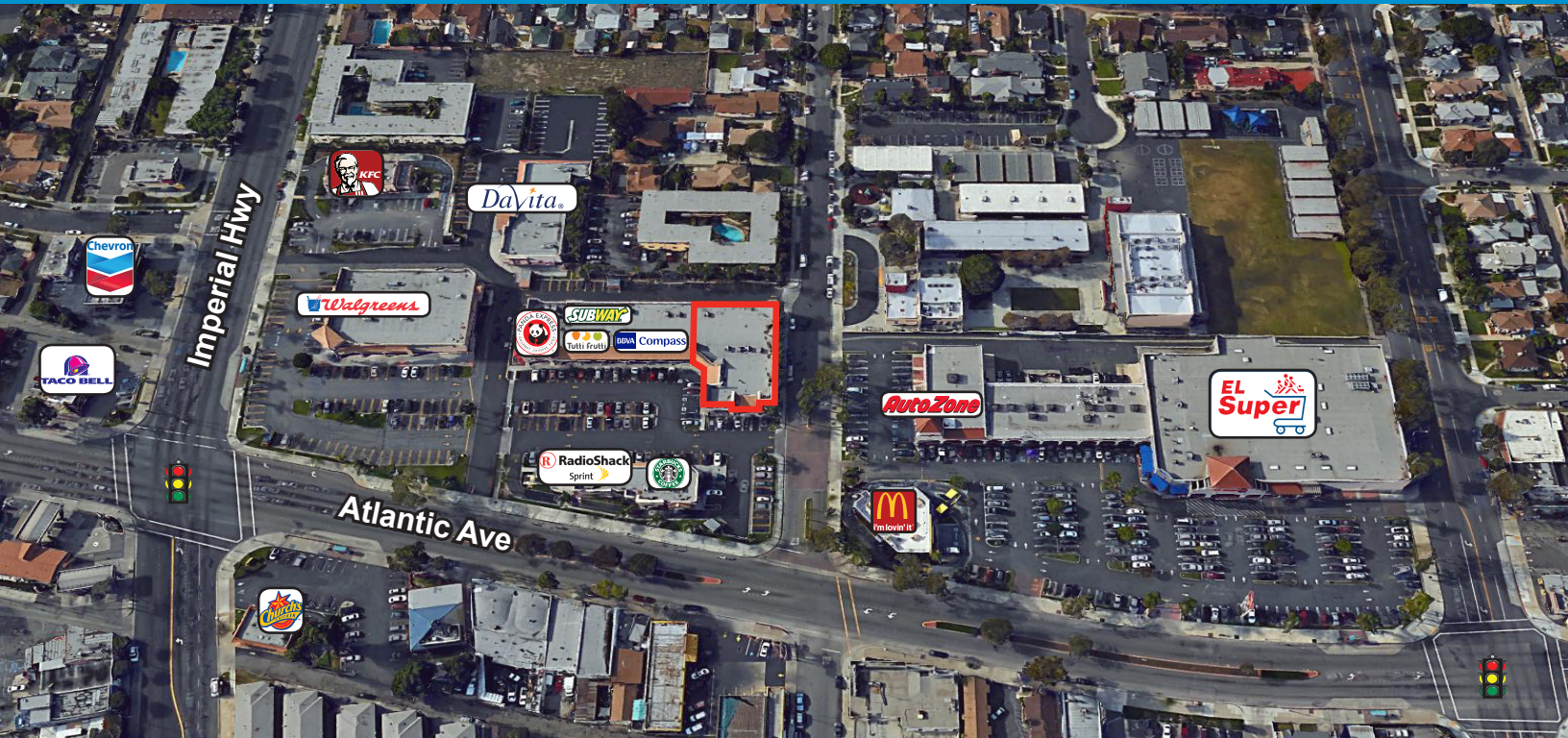


ATLANTIC CROSSING

10901-10923 ATLANTIC AVENUE | LYNWOOD, CA 90262



RETAIL FORESIGHT



SHOPPING CENTER CHARACTERISTICS

- TENANTS:** Walgreens, KFC, Starbucks, Subway, Panda Express, & more
- NEIGHBORING TENANTS:** El Super, McDonald's, Autozone, Chevron, Church's Chicken & more

AVAILABILITY

- AVAILABILITY:** ±8,100 Sq. Ft.
- LEASE RATE:** Negotiable

TRAFFIC COUNTS

- ATLANTIC AVE & IMPERIAL AVE:** ±53,700 CPD (Costar 2014)

HIGHLIGHTS

- > Major community shopping center anchored by Walgreens and shadow anchored by El Super.
- > Located at a major signalized intersection with traffic counts exceeding 53,700 cars per day, and within 1/4 of a mile of the 710 Freeway.
- > Pylon signage available providing maximum street exposure.
- > Strong three-mile demographics with over 382,500 residents and 92,245 households, and a daytime population of 77,504.

FOR FURTHER INFORMATION PLEASE CALL: +1 323 609 3172

JAMES RODRIGUEZ

SR. VICE PRES. | LIC. NO. 01164377
james.rodriguez@colliers.com

MICHAEL BOHORQUEZ

VICE PRES. | LIC. NO. 01870842
michael.bohorquez@colliers.com

COLLIERS INTERNATIONAL | DOWNTOWN LA

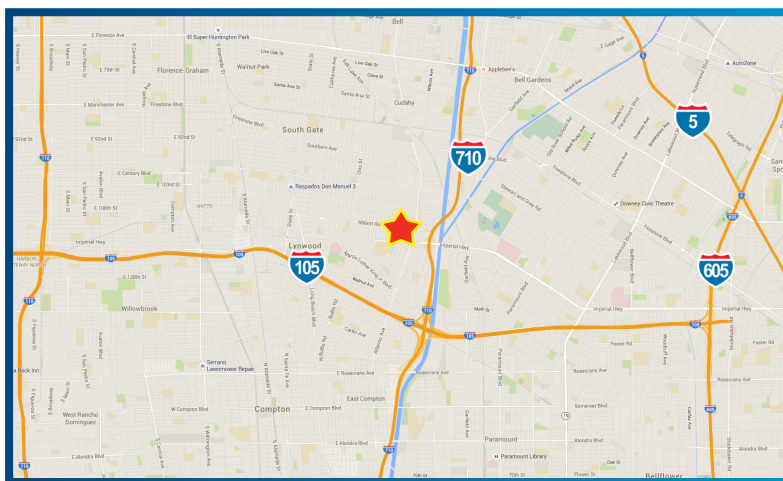
865 S. Figueroa St., Suite 3500 | Los Angeles, CA 90017
www.Retail-Foresight.com

ATLANTIC CROSSING

10901-10923 ATLANTIC AVENUE | LYNWOOD, CA 90262



RETAIL FORESIGHT



2015 DEMOGRAPHICS	1 Mile	3 Mile	5 Mile
Population:	34,825	382,527	997,381
Est. Households:	8,081	92,245	242,270
Est. Hispanic Population:	91.1%	87.6%	80.1%
Avg. Household Income:	\$56,848	\$52,434	\$53,739
Est. Daytime Population:	7,063	77,504	224,703
Source: Claritas			

FOR FURTHER INFORMATION PLEASE CALL: +1 323 609 3172

JAMES RODRIGUEZ

SR. VICE PRES. | LIC. NO. 01164377
james.rodriquez@colliers.com

MICHAEL BOHORQUEZ

VICE PRES. | LIC. NO. 01870842
michael.bohorquez@colliers.com

COLLIERS INTERNATIONAL | DOWNTOWN LA

865 S. Figueroa St., Suite 3500 | Los Angeles, CA 90017
www.Retail-Foresight.com