

FOR
SUBLEASE

Kingsgate Place Building

12910 Totem Lake Blvd. NE, Kirkland, WA 98034

Colliers
INTERNATIONAL



PROPERTY DETAILS:

Available Space: 19,424 SF Total (divisible to approx. 5,000 SF)

Lease Rate: \$23.00/SF/Yr, Full Service

Master Lease Expires Sept. 30, 2018

- :: High quality image two-story building with direct access to I-405
- :: Surface parking at a ratio of 3.3 stalls/1,000 SF leased
- :: Building signage available
- :: Direct long term lease available through Landlord
- :: Below market rental rate
- :: Available Immediately

DEREK HEED
+1 425 453 3133
derek.heed@colliers.com

GREG SKIPPER
+1 425 453 3138
greg.skipper@colliers.com

COLLIERS INTERNATIONAL
+1 425 453 4545
www.colliers.com/bellevue



Kingsgate Place Building



Kingsgate Place Building



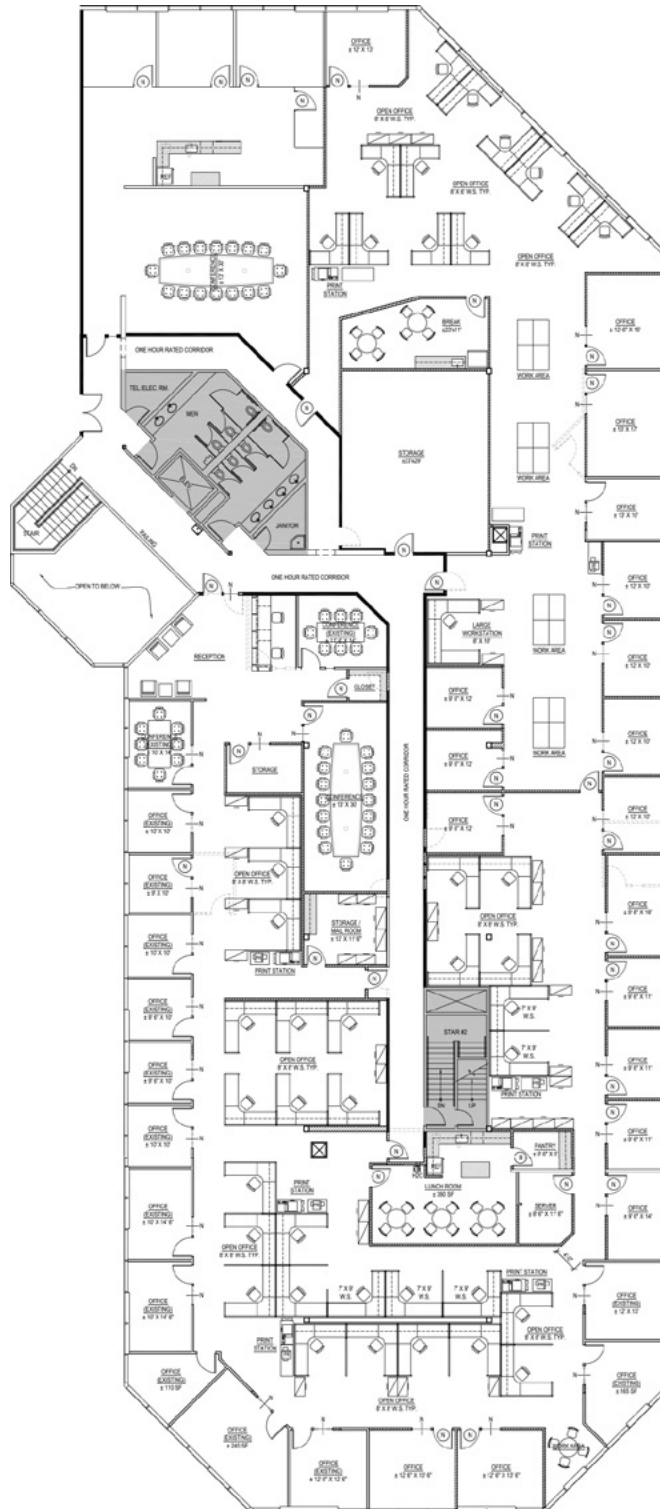
DEREK HEED
+1 425 453 3133
derek.heed@colliers.com

GREG SKIPPER
+1 425 453 3138
greg.skipper@colliers.com

COLLIERS INTERNATIONAL
+1 425 453 4545
www.colliers.com/bellevue



Kingsgate Place Building



DEREK HEED
+1 425 453 3133
derek.heed@colliers.com

GREG SKIPPER
+1 425 453 3138
greg.skipper@colliers.com

COLLIERS INTERNATIONAL
+1 425 453 4545
www.colliers.com/bellevue

