

FOR
SUBLEASE

Kingsgate Place Building

12910 Totem Lake Blvd. NE, Kirkland, WA 98034



PROPERTY DETAILS:

Available Space: 19,424 SF Total (divisible to approx. 5,000 SF)

Lease Rate: \$23.00/SF/Yr, Full Service

Master Lease Expires Sept. 30, 2018

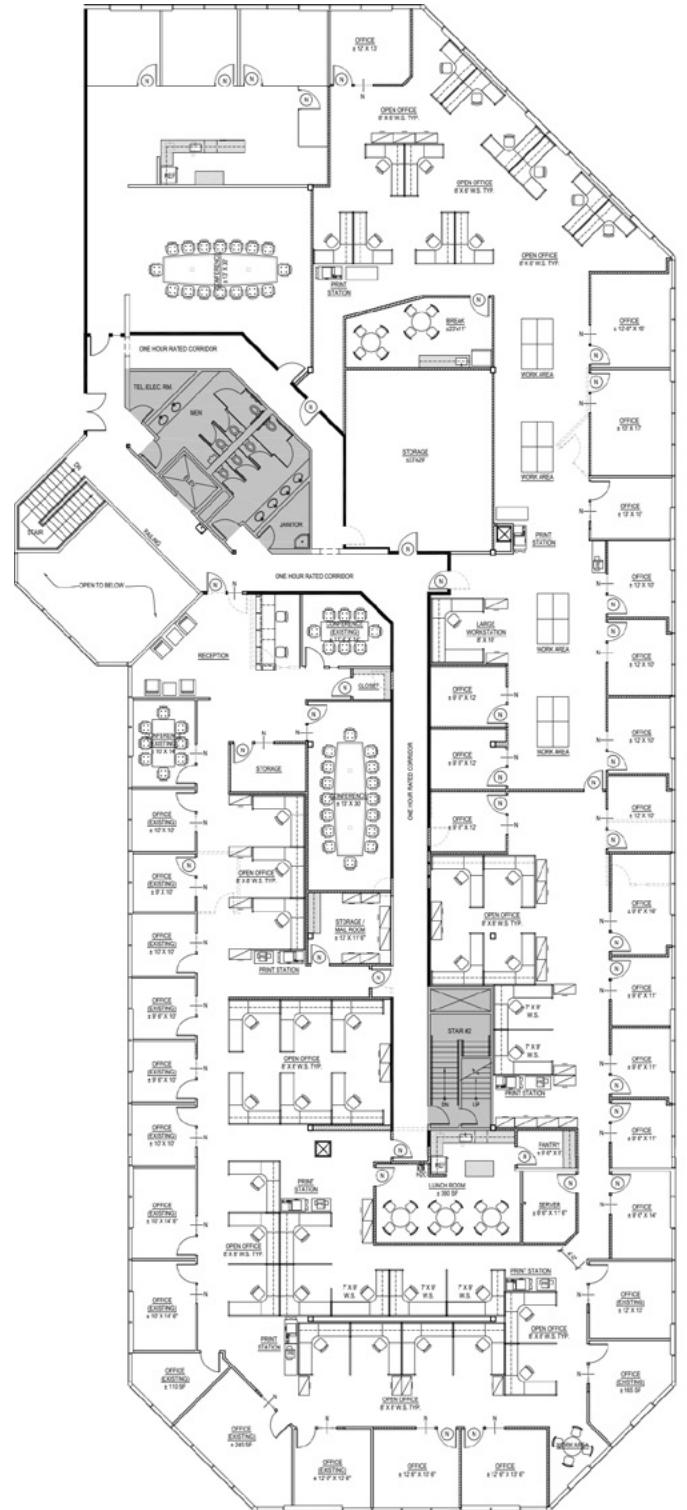
- :: High quality image two-story building with direct access to I-405
- :: Surface parking at a ratio of 3.3 stalls/1,000 SF leased
- :: Building signage available
- :: Direct long term lease available through Landlord
- :: Below market rental rate
- :: Available Immediately

DEREK HEED
+1 425 453 3133
derek.heed@colliers.com

COLLIERS INTERNATIONAL
+1 425 453 4545
www.colliers.com/bellevue



Kingsgate Place Building



DEREK HEED
+1 425 453 3133
derek.heed@colliers.com

COLLIERS INTERNATIONAL
+1 425 453 4545
www.colliers.com/bellevue



Kingsgate Place Building



This document has been prepared by Colliers International for advertising and general information only. Colliers International makes no guarantees, representations or warranties of any kind, expressed or implied, regarding the information including, but not limited to, warranties of content, accuracy and reliability. Any interested party should undertake their own inquiries as to the accuracy of the information. Colliers International excludes unequivocally all inferred or implied terms, conditions and warranties arising out of this document and excludes all liability for loss and damages arising there from. This publication is the copyrighted property of Colliers International and /or its licensor(s). © 2017. All rights reserved.