

FOR LEASE > OFFICE SPACE

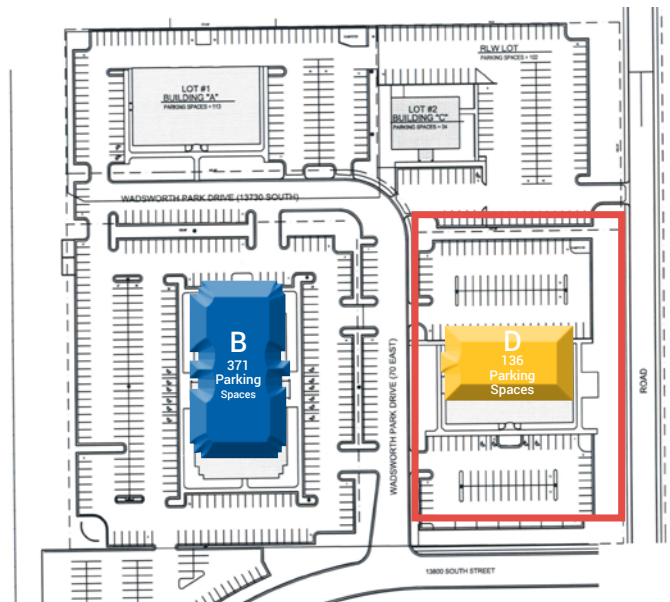
# Wadsworth - Building D

13751 SOUTH WADSWORTH PARK DRIVE DRAPER, UTAH



## Property Information

- > Lease Rate: \$23.00
- > 3 Year Lease only
- > First Floor Space:
- > 8,376 RSF
- > Landlord will not demise space
- > Great South Salt Lake Valley location along the Interstate 15 Corridor
- > Excellent Freeway Access
- > Walkable Amenities
- > 4/1000 Parking on Rentable Square Footage
- > Building in Excellent Condition



**Greg Pavich**  
+1 801 947 8300  
greg.pavich@colliers.com



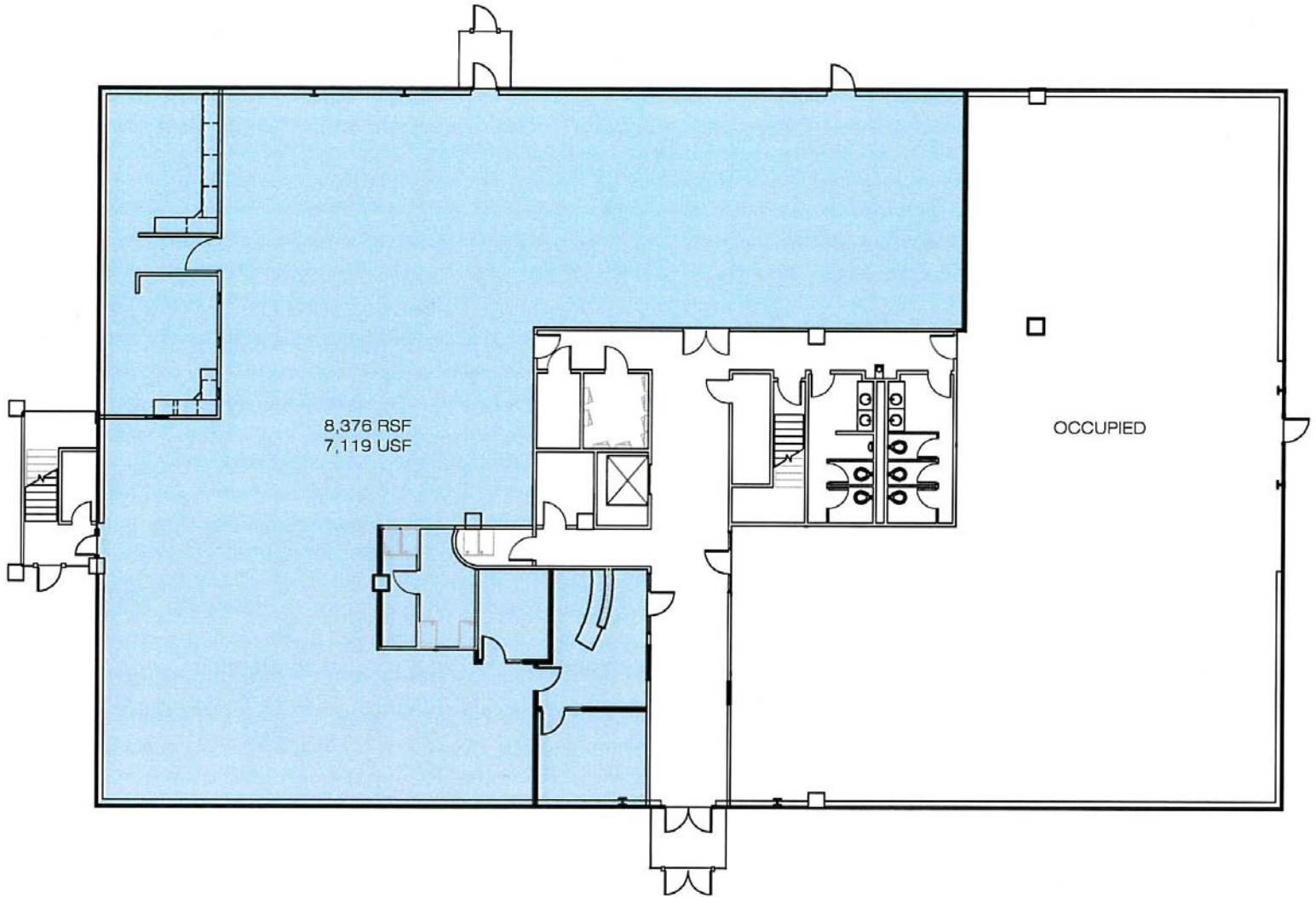
**George P. Richards CCIM, CRB**  
+1 801 631 9963  
george@chapmanrichards.com

**Colliers International**  
6550 S Millrock Dr | Suite 200  
Salt Lake City, UT 84121  
P: +1 801 947 8300

FOR LEASE > OFFICE SPACE

# Wadsworth - Building D

13751 SOUTH WADSWORTH PARK DRIVE DRAPER, UTAH



Colliers International  
6550 S Millrock Dr | Suite 200  
Salt Lake City, UT 84121  
P: +1 801 947 8300





FOR LEASE > OFFICE SPACE

# Wadsworth - Building D

13751 SOUTH WADSWORTH PARK DRIVE DRAPER, UTAH



Source: Esri, DigitalGlobe, GeoEye, Earthstar Geographics, CNES/Airbus DS, USDA, USGS, AeroGRID, IGN, and the GIS User Community

This document has been prepared by Colliers International for advertising and general information only. Colliers International makes no guarantees, representations or warranties of any kind, expressed or implied, regarding the information including, but not limited to, warranties of content, accuracy and reliability. Any interested party should undertake their own inquiries as to the accuracy of the information. Colliers International excludes unequivocally all inferred or implied terms, conditions and warranties arising out of this document and excludes all liability for loss and damages arising there from. This publication is the copyrighted property of Colliers International and/or its licensor(s). ©2017. All rights reserved.

Colliers International  
6550 S Millrock Dr | Suite 200  
Salt Lake City, UT 84121  
P: +1 801 947 8300

