

# Lakeville 27 Acres

NEQ CTY RD 70 & I-35W | LAKEVILLE, MN 55044



## Property Details

- > Tremendous Investment Opportunity
- > Approximately 27 Acres
- > Zoned C-3, General Commercial District
- > Lakeville - Most Residential Permits - 2013
- > Area Tenants: Walmart, McDonalds, Holiday Inn, Mueller Family Theaters and more



## Contact

CHRIS SIMMONS  
952 897 7760  
MINNETONKA, MN  
[csimmons@welshco.com](mailto:csimmons@welshco.com)

WELSH COMPANIES  
4350 Baker Road, Suite 400  
Minnetonka, MN 55343  
[www.welshco.com/retail](http://www.welshco.com/retail)  
[www.xteam.net](http://www.xteam.net)

# Site Information

- > **Location** NEQ Cty Rd 70 & I-35W | Lakeville, MN
- > **Description** Approximately 27 Acres
- > **Zoning** C-3: General Commercial District

## DEMOGRAPHICS:

	1 Mile	3 Miles	5 Miles
Population	3,658	35,801	107,156
Median HH Income	\$71,745	\$91,916	\$86,171
Average HH Income	\$105,276	\$133,179	\$124,011

\* Source: ESRI 2015 Est.

## TRAFFIC COUNTS:

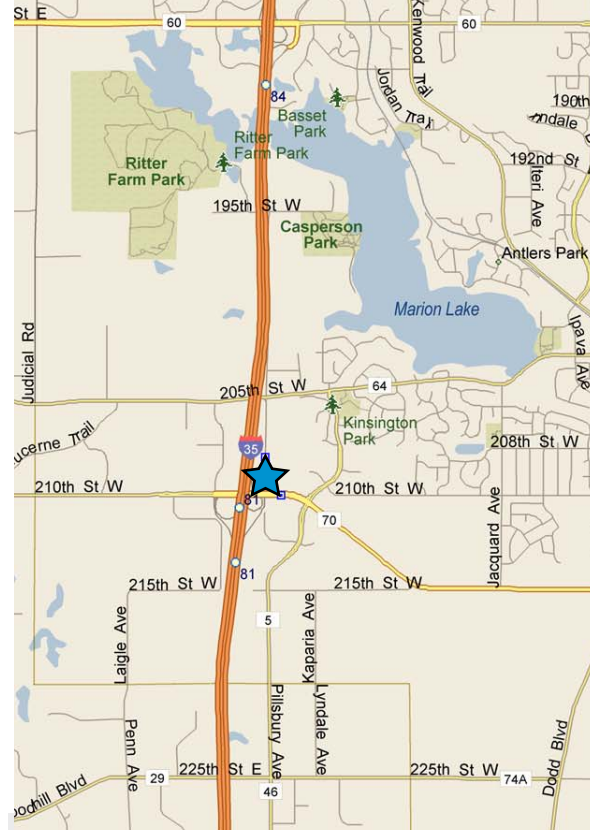
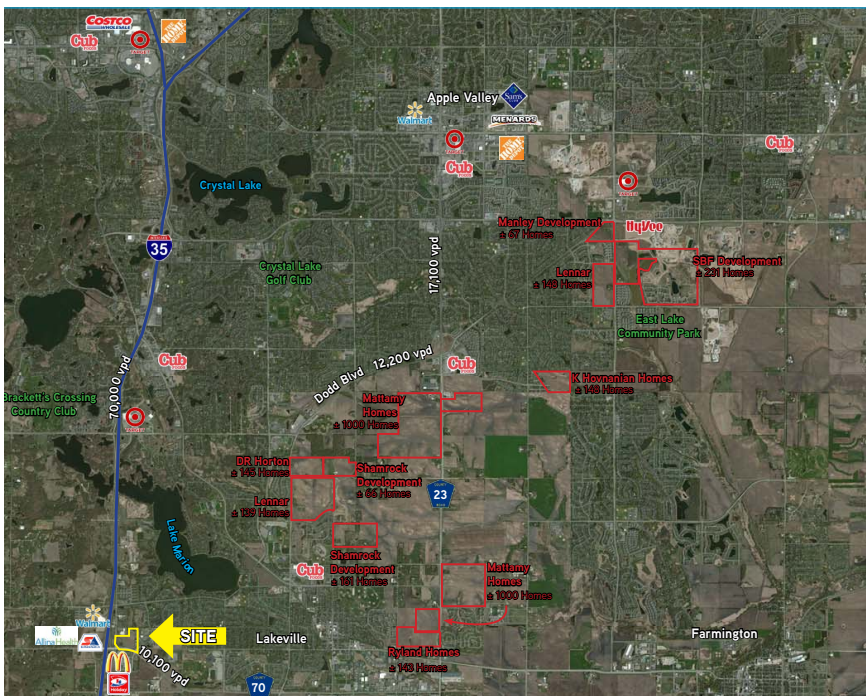
- > I-35W: 64,400 vpd
- > Cty Rd 70: 23,500 vpd

\* Source: Minnesota Department of Transportation 2015 Study Averages are per day total cars

## AREA TENANTS:

- > Walmart
- > McDonald's
- > Holiday Inn
- > Baldy's BBQ
- > Mueller Family Theater

## AERIAL:



## Contact

CHRIS SIMMONS  
952 897 7760  
MINNETONKA, MN  
[csimmons@welshco.com](mailto:csimmons@welshco.com)

WELSH COMPANIES  
4350 Baker Road, Suite 400  
Minnetonka, MN 55343  
[www.welshco.com/retail](http://www.welshco.com/retail)  
[www.xteam.net](http://www.xteam.net)