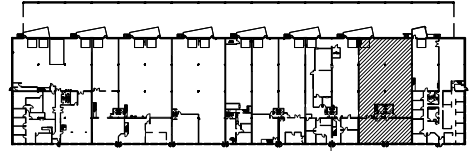


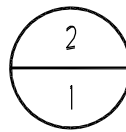
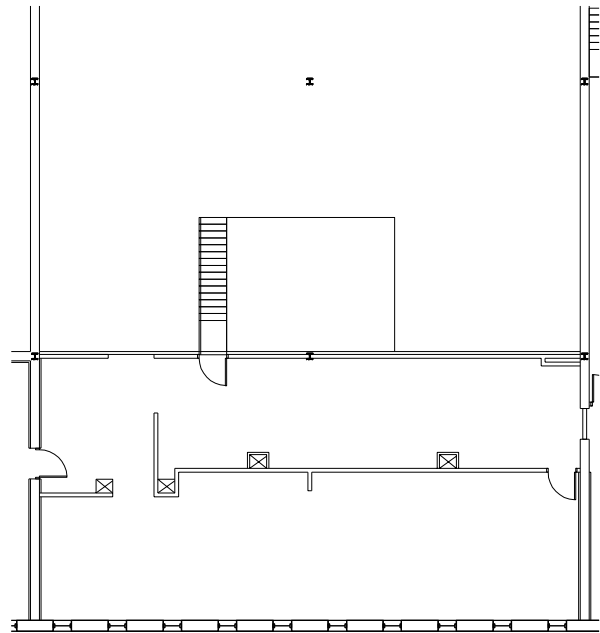
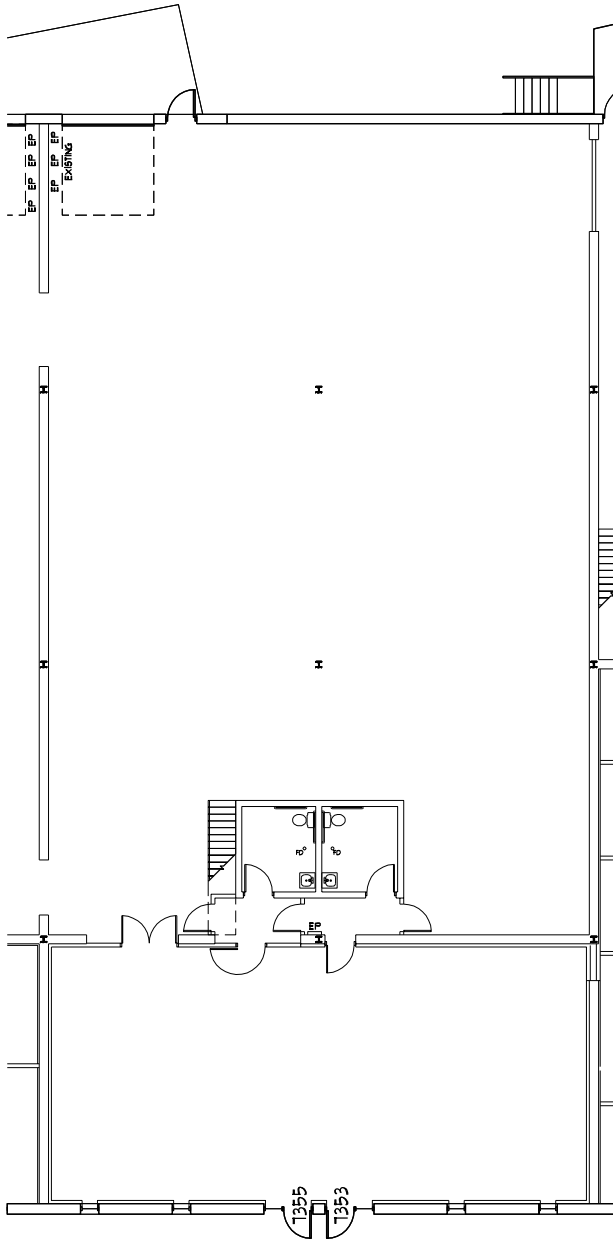
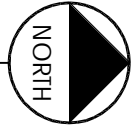
# SQUARE FOOTAGE SUMMARY

OFFICE	2,111 S.F.
WAREHOUSE	5,089 S.F.
MEZZANINE	1,830 S.F.
MECH	13 S.F.
<b>TOTAL</b>	<b>9,043 S.F.</b>

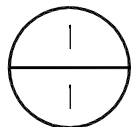
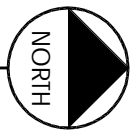


## KEY PLAN

NOT TO SCALE



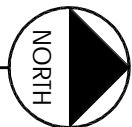
MEZZANINE



SUITE 7353 & 7355

10802.138

09.03.08



LEASED BY:



## NORTHCREST II

7353 - WASHINGTON AVENUE SOUTH  
EDINA, MN

**WCL**  
Associates, Inc.



4931 West 35th Street  
Suite 200  
St. Louis Park, Minnesota  
55416  
T. 952.541-9969  
F. 952.541-9554  
www.wcla.com