

FOR SUBLEASE > RETAIL SPACE

Former Kmart

4670 SOUTH 900 EAST SALT LAKE CITY, UTAH



Property Information

- > 94,250 Square Feet
- > Lease Term Ends May 31, 2020
- > No asking price, submit offers

Nearby Tenants



DEMOGRAPHICS	1 MILE	3 MILE	5 MILE
Population			
2017 Estimated	18,465	144,866	355,342
2022 Projected	19,392	152,435	373,035
Households			
2017 Estimated	8,007	57,995	136,148
2022 Projected	8,386	60,962	142,859
Income			
2017 Median HHI	\$54,322	\$55,482	\$58,542
2017 Average HHI	\$72,862	\$76,758	\$80,861
2017 Per Capita	\$32,721	\$30,978	\$31,301

Information provided by ESRI Business Analyst

Steve Bowler
+1 801 947 8396
steve.bowler@colliers.com

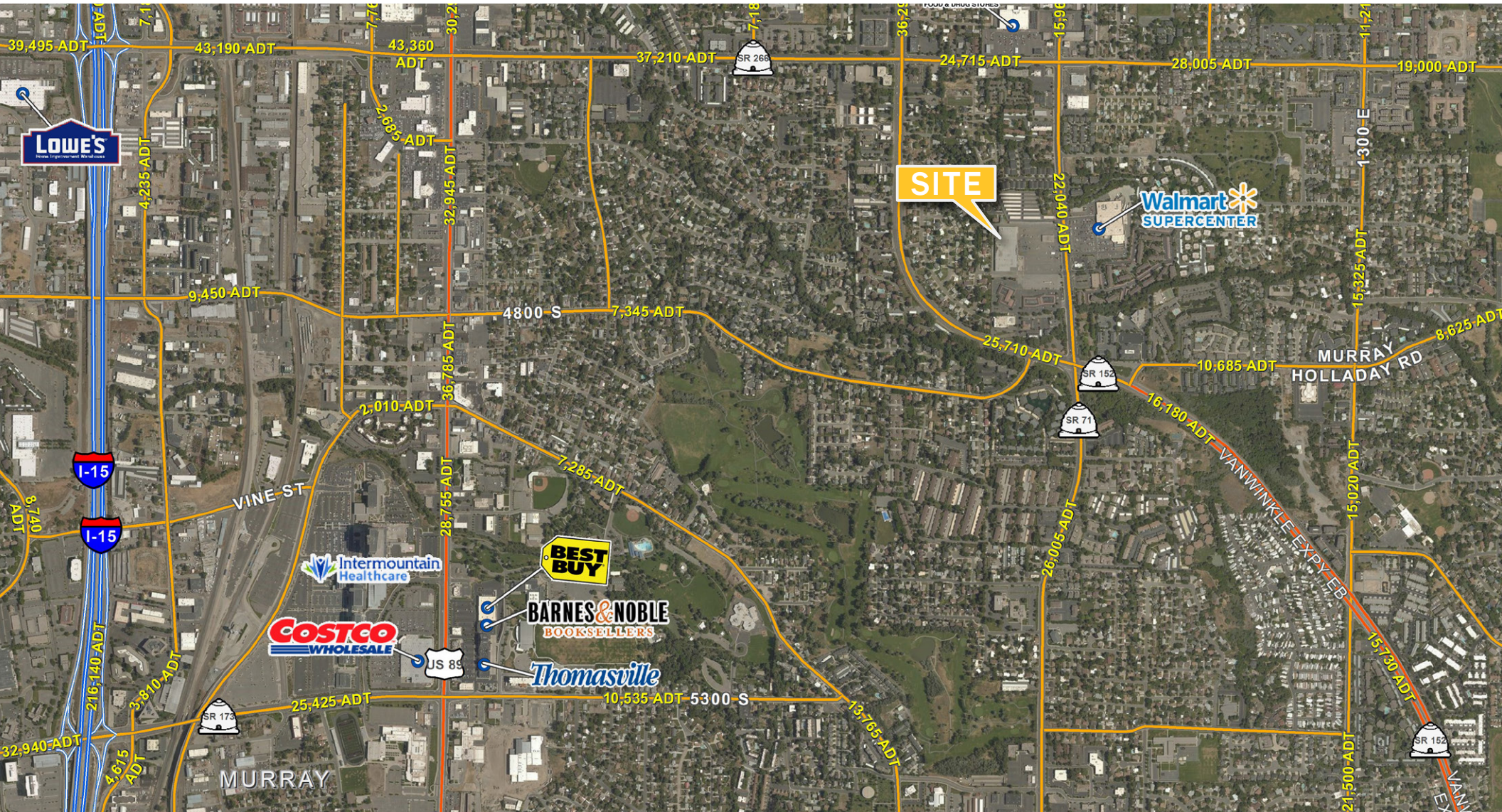
Kelsie Bowler
+1 801 947 8353
kelsie.bowler@colliers.com

Colliers International
6550 S Millrock Dr | Suite 200
Salt Lake City, UT 84121
P: +1 801 947 8300

FOR SUBLEASE > RETAIL SPACE

Former Kmart

4670 SOUTH 900 EAST SALT LAKE CITY, UTAH



This document has been prepared by Colliers International for advertising and general information only. Colliers International makes no guarantees, representations or warranties of any kind, expressed or implied, regarding the information including, but not limited to, warranties of content, accuracy and reliability. Any interested party should undertake their own inquiries as to the accuracy of the information. Colliers International excludes unequivocally all inferred or implied terms, conditions and warranties arising out of this document and excludes all liability for loss and damages arising there from. This publication is the copyrighted property of Colliers International and/or its licensor(s). ©2017. All rights reserved.

Colliers International
6550 S Millrock Dr | Suite 200
Salt Lake City, UT 84121
P: +1 801 947 8300

