



# SHIPPENSBURG LOGISTICS CENTER

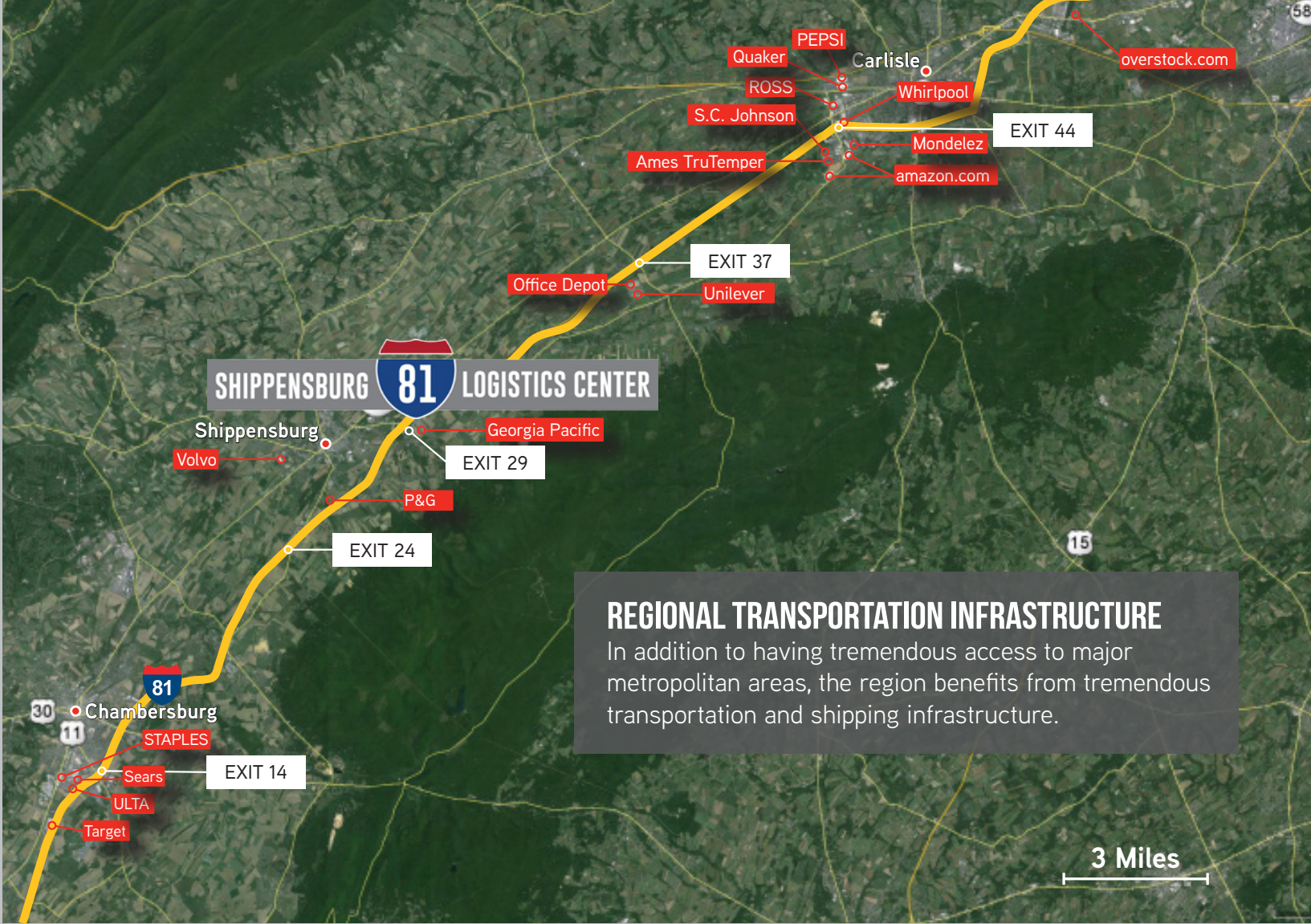
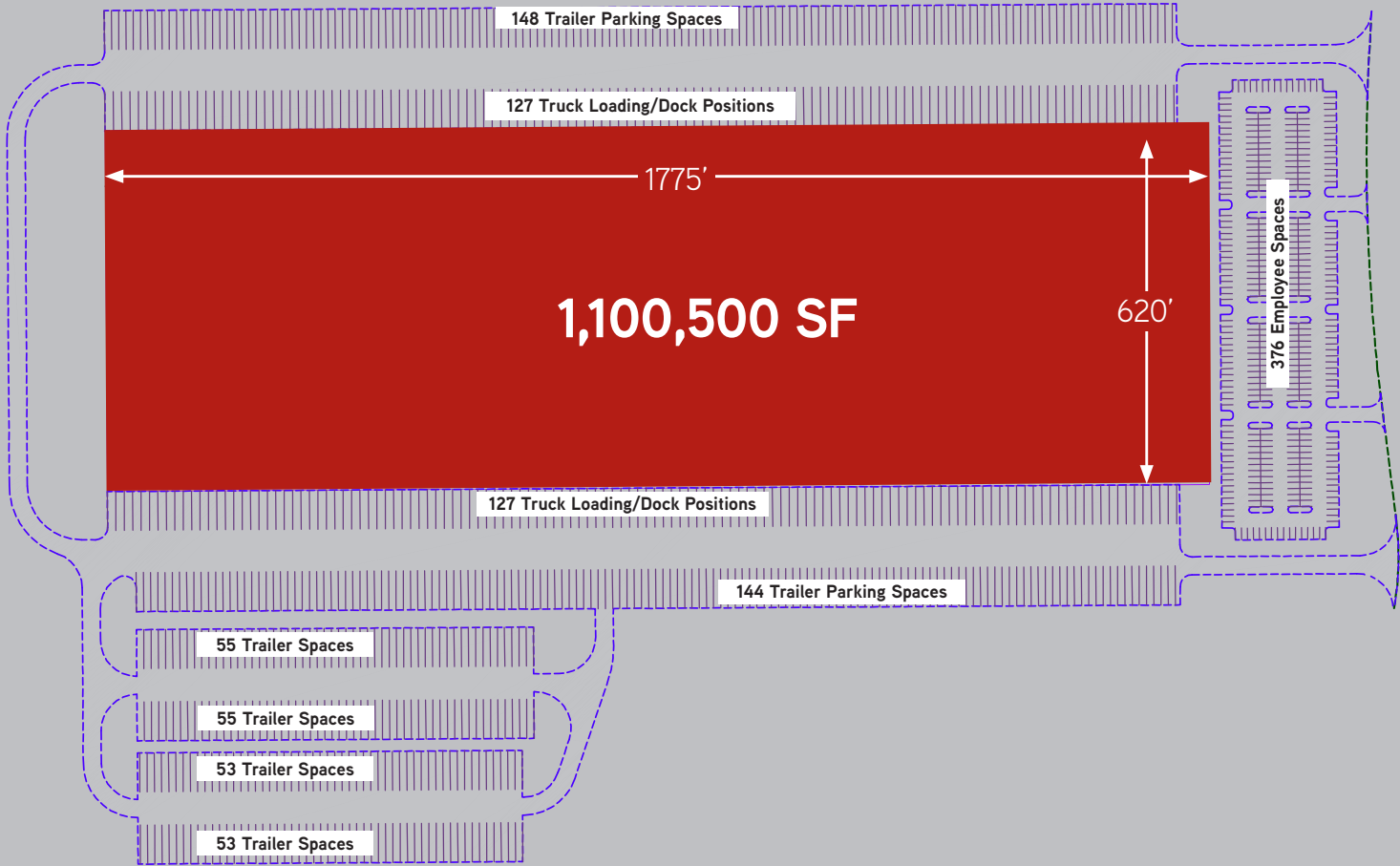
***SALE OR LEASE***

## 1,100,500 SF INDUSTRIAL DEVELOPMENT

FULLY APPROVED | DISTRIBUTION, FULFILLMENT AND E-COMMERCE



BUILDING FEATURES	
BUILDING SIZE:	1,100,500 SF cross dock design with full circulation
BUILDING DIMENSIONS:	620' x 1,775'
SITE SIZE:	126.3 acres
CAR PARKING SPACES:	376
TRUCK COURT DEPTH:	200'
TRAILER STORAGE:	490 (away from building)
ZONING:	Industrial
DOCK DOORS:	242



REGIONAL TRANSPORTATION INFRASTRUCTURE

In addition to having tremendous access to major metropolitan areas, the region benefits from tremendous transportation and shipping infrastructure.

INTERMODAL & PARCEL SERVICE

CSX - CHAMBERSBURG INTERMODAL	15 Miles	FEDEX (Hagerstown)	38 Miles
FN - FRANKLIN COUNTY INTERMODAL (Greencastle)	27 Miles	USPS (Harrisburg)	40 Miles
HARRISBURG INTERMODAL (Harrisburg)	41 Miles	UPS (Harrisburg)	44 Miles
RUTHERFORD INTERMODAL (Harrisburg)	44 Miles	FEDEX GROUND (Middletown)	50 Miles

AIRPORT

HARRISBURG INTERNATIONAL AIRPORT	49 Miles
----------------------------------	----------



**MARK CHUBB**  
SR MANAGING DIRECTOR/PRINCIPAL  
+1 610 684 1862  
mark.chubb@colliers.com

**MICHAEL ZERBE**  
SR MANAGING DIRECTOR/PRINCIPAL  
+1 610 684 1853  
michael.zerbe@colliers.com

**COLLIERS INTERNATIONAL**  
Eight Tower Bridge  
161 Washington Street, Suite 1090  
Conshohocken, PA 19428  
+1 610 684 1850  
www.colliers.com/philadelphia

