

FOR LEASE > PROFESSIONAL OFFICE SPACE

Barstow Professional Center



125 E. BARSTOW AVENUE, SUITES 104 & 110, FRESNO, CA



Building Amenities

- > Located along Barstow Avenue between Fresno Street and Blackstone Avenue
- > Lease Rate: \$1.30 per square foot, per month, Modified Gross. Tenant to pay the cost of its utilities and janitorial service
- > Available: Suite 104 - Approximately 1,758 SF. Three exam rooms, private office, interior restrooms, break room, storage, reception area with additional work space and waiting room.

Suite 110 - Approximately 744 SF. Two private offices, interior restroom, storage, reception area with built-in counter and waiting area. Former chiropractic office.

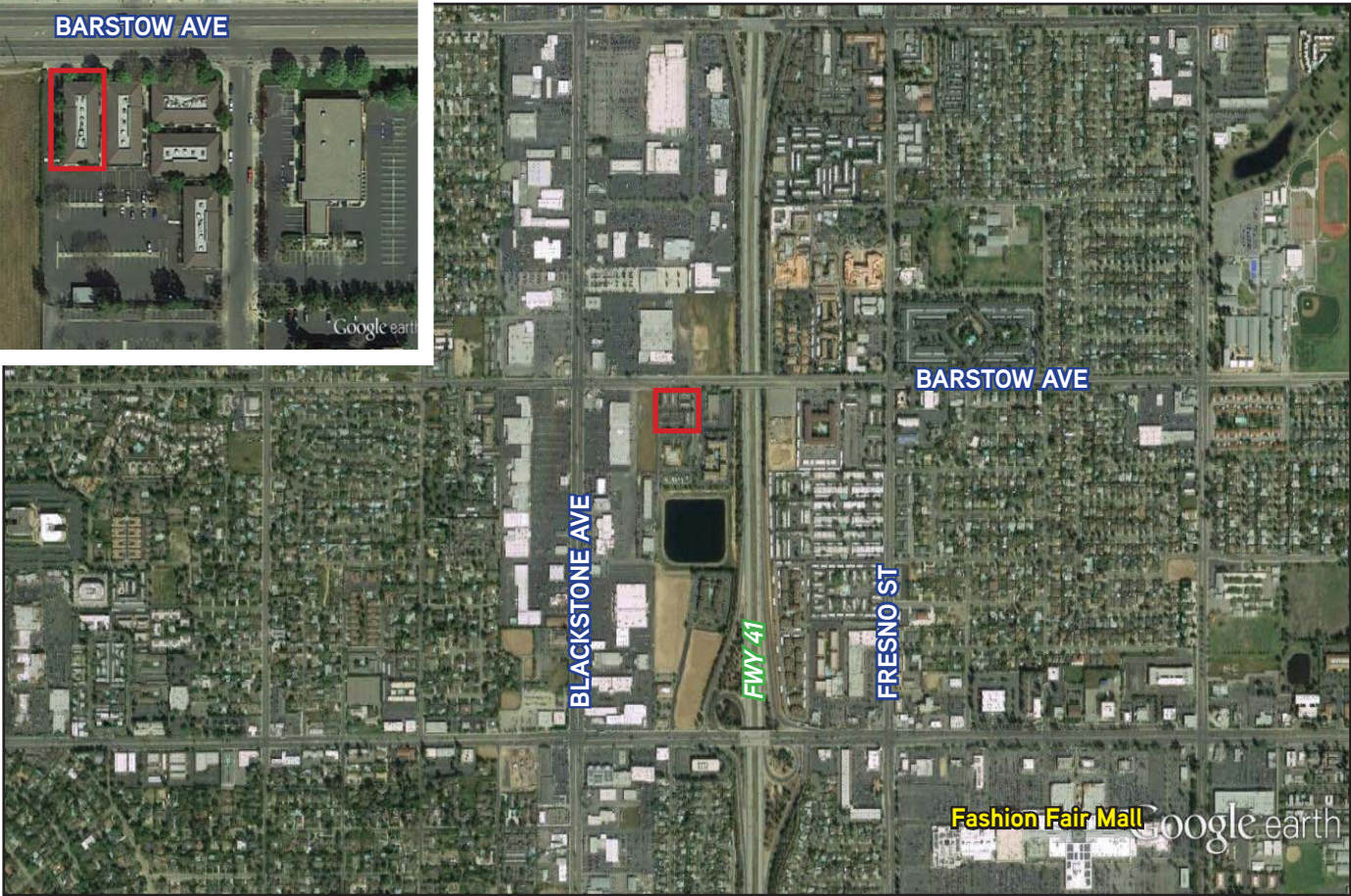
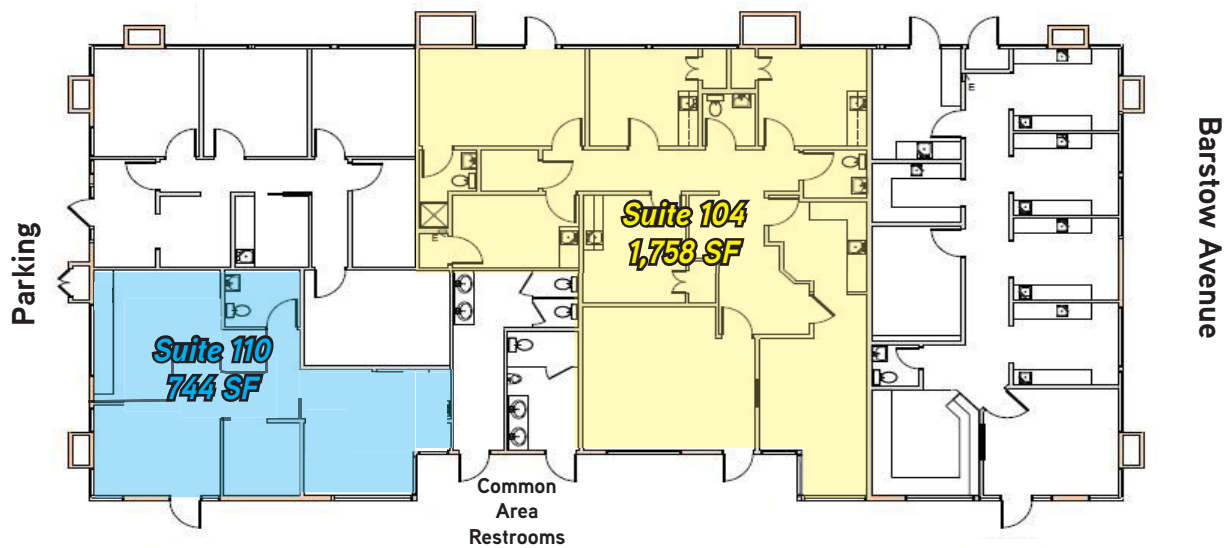
- > Tenant Improvements: Negotiable



AGENT: BEAU PLUMLEE
559 256 2443
beau.plumlee@colliers.com
BRE #01269167

COLLIERS INTERNATIONAL
7485 N. Palm Avenue. #110
Fresno, CA 93711
www.colliers.com/fresno

Barstow Professional Center > Floor Plan



This document has been prepared by Colliers International for advertising and general information only. Colliers International makes no guarantees, representations or warranties of any kind, expressed or implied, regarding the information including, but not limited to, warranties of content, accuracy and reliability. Any interested party should undertake their own inquiries as to the accuracy of the information. Colliers International excludes unequivocally all inferred or implied terms, conditions and warranties arising out of this document and excludes all liability for loss and damages arising there from. This publication is the copyrighted property of Colliers International and/or its licensor(s). ©2016. All rights reserved.

