

# 1150 MILEPOST DRIVE

Columbus, Ohio 43228



## Building Overview > Office/Warehouse Space

Multi-tenant office/warehouse property built in 1990 consisting of  $\pm 12,000$  square feet. The building consists of  $\pm 8,600$  square feet of warehouse space and  $\pm 3,400$  square feet of office space.

*Office space available for immediate move-in!*

## Availability Highlights

- >  $\pm 1,700$  SF Useable Office Space
- > Reception area
- > Conference room
- > Kitchenette
- > Two private restrooms
- > Direct Entry
- > Great access from Interstate 70

## CONTACTS

Grant Hartman  
DIR 1 614 437 4650  
[grant.hartman@colliers.com](mailto:grant.hartman@colliers.com)

Ross Lanford  
DIR 1 614 437 4567  
[ross.lanford@colliers.com](mailto:ross.lanford@colliers.com)

---

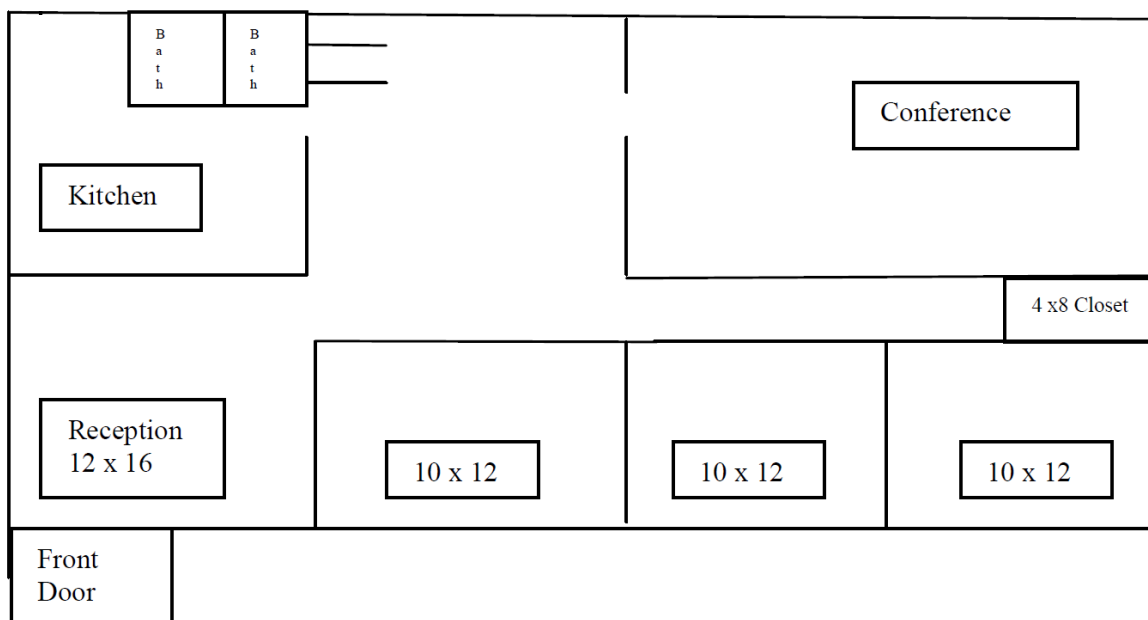
Colliers International  
Greater Columbus Region

Two Miranova Place  
Suite 900  
Columbus, OH 43215

[www.colliers.com/ohio](http://www.colliers.com/ohio)

## 1150 Milepost Drive > Availability

| SUITE  | RSF    | RATE/RSF/YR | COMMENTS           |
|--------|--------|-------------|--------------------|
| Office | ±1,700 | \$11.50 FSG | Full service gross |



### CONTACTS

Grant Hartman  
DIR 1 614 437 4650  
[grant.hartman@colliers.com](mailto:grant.hartman@colliers.com)

Ross Lanford  
DIR 1 614 437 4567  
[ross.lanford@colliers.com](mailto:ross.lanford@colliers.com)

This document has been prepared by Colliers International for advertising and general information only. Colliers International makes no guarantees, representations or warranties of any kind, expressed or implied, regarding the information including, but not limited to, warranties of content, accuracy and reliability. Any interested party should undertake their own inquiries as to the accuracy of the information. Colliers International excludes unequivocally all inferred or implied terms, conditions and warranties arising out of this document and excludes all liability for loss and damages arising there from. This publication is the copyrighted property of Colliers International and/or its licensor(s). ©2017. All rights reserved.

