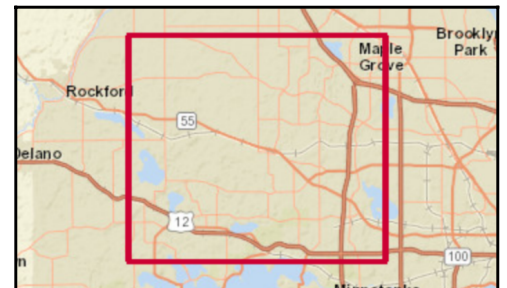
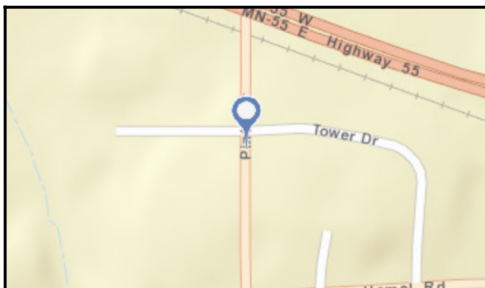
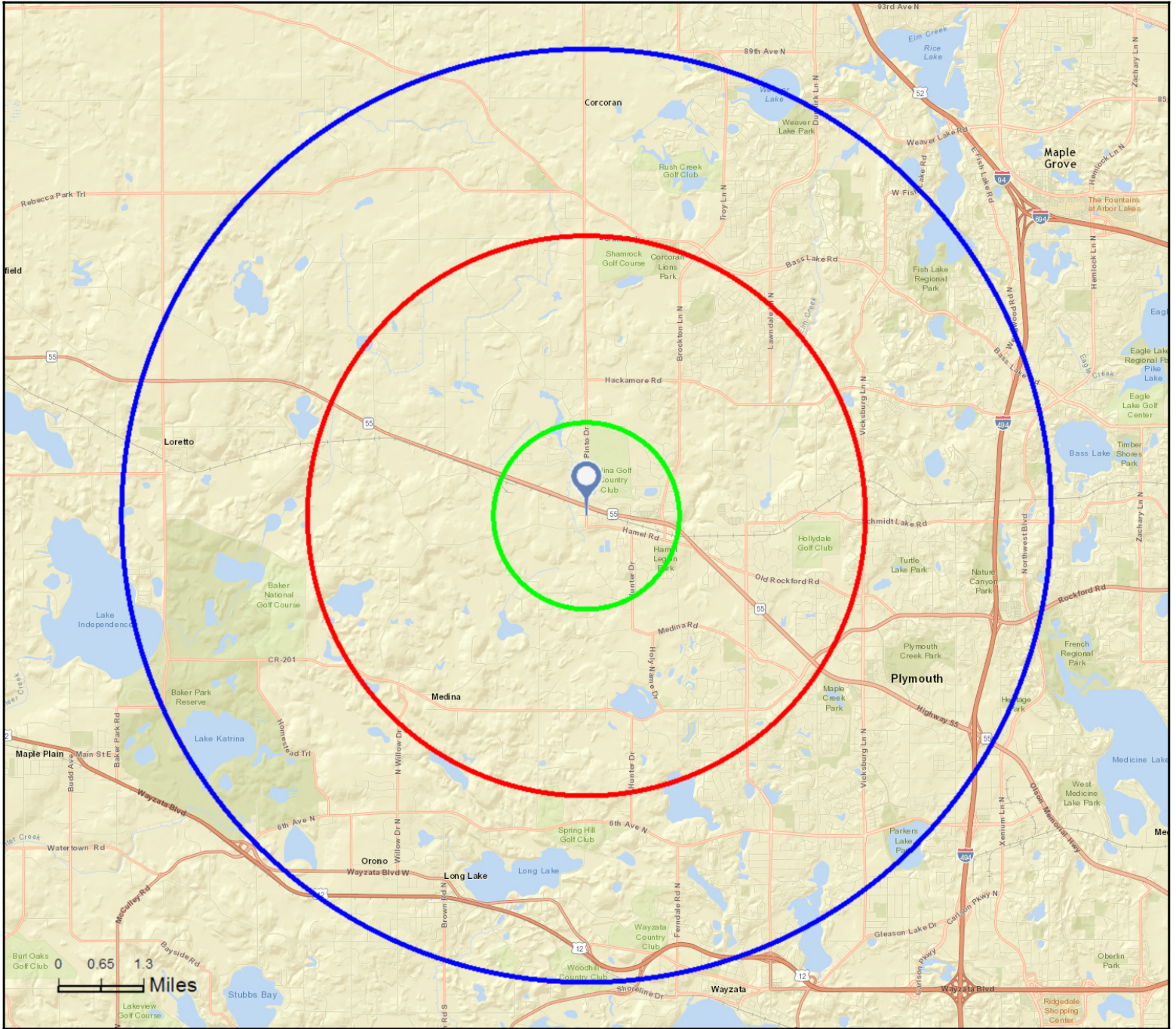




Site Map

3672 Pinto Dr, Medina, Minnesota, 55340
Rings: 1, 3, 5 mile radii

Colliers International
Latitude: 45.04444
Longitude: -93.54244





Executive Summary

3672 Pinto Dr, Medina, Minnesota, 55340
Rings: 1, 3, 5 mile radii

Colliers International
Latitude: 45.04444
Longitude: -93.54244

	1 mile	3 miles	5 miles
Population			
2000 Population	1,287	13,411	59,211
2010 Population	1,752	19,518	72,868
2016 Population	1,808	23,910	82,158
2021 Population	2,028	27,130	89,873
2000-2010 Annual Rate	3.13%	3.82%	2.10%
2010-2016 Annual Rate	0.50%	3.30%	1.94%
2016-2021 Annual Rate	2.32%	2.56%	1.81%
2016 Male Population	49.6%	48.6%	49.0%
2016 Female Population	50.4%	51.4%	51.0%
2016 Median Age	42.5	40.1	39.1

In the identified area, the current year population is 82,158. In 2010, the Census count in the area was 72,868. The rate of change since 2010 was 1.94% annually. The five-year projection for the population in the area is 89,873 representing a change of 1.81% annually from 2016 to 2021. Currently, the population is 49.0% male and 51.0% female.

Median Age

The median age in this area is 42.5, compared to U.S. median age of 38.0.

Race and Ethnicity

2016 White Alone	92.3%	82.4%	82.8%
2016 Black Alone	1.4%	2.9%	4.3%
2016 American Indian/Alaska Native Alone	0.1%	0.1%	0.2%
2016 Asian Alone	4.4%	11.7%	9.7%
2016 Pacific Islander Alone	0.1%	0.1%	0.0%
2016 Other Race	0.3%	0.7%	0.8%
2016 Two or More Races	1.5%	2.2%	2.3%
2016 Hispanic Origin (Any Race)	1.3%	2.4%	2.5%

Persons of Hispanic origin represent 2.5% of the population in the identified area compared to 17.9% of the U.S. population. Persons of Hispanic Origin may be of any race. The Diversity Index, which measures the probability that two people from the same area will be from different race/ethnic groups, is 33.7 in the identified area, compared to 63.5 for the U.S. as a whole.

Households

2000 Households	424	4,166	20,901
2010 Households	612	6,691	27,311
2016 Total Households	637	8,159	30,530
2021 Total Households	714	9,229	33,202
2000-2010 Annual Rate	3.74%	4.85%	2.71%
2010-2016 Annual Rate	0.64%	3.22%	1.80%
2016-2021 Annual Rate	2.31%	2.50%	1.69%
2016 Average Household Size	2.84	2.92	2.67

The household count in this area has changed from 27,311 in 2010 to 30,530 in the current year, a change of 1.80% annually. The five-year projection of households is 33,202, a change of 1.69% annually from the current year total. Average household size is currently 2.67, compared to 2.64 in the year 2010. The number of families in the current year is 22,395 in the specified area.

Data Note: Income is expressed in current dollars

Source: U.S. Census Bureau, Census 2010 Summary File 1. Esri forecasts for 2016 and 2021. Esri converted Census 2000 data into 2010 geography.



Executive Summary

3672 Pinto Dr, Medina, Minnesota, 55340
Rings: 1, 3, 5 mile radii

Colliers International
Latitude: 45.04444
Longitude: -93.54244

	1 mile	3 miles	5 miles
Median Household Income			
2016 Median Household Income	\$113,062	\$129,382	\$108,272
2021 Median Household Income	\$117,646	\$139,158	\$118,079
2016-2021 Annual Rate	0.80%	1.47%	1.75%
Average Household Income			
2016 Average Household Income	\$172,991	\$164,363	\$146,257
2021 Average Household Income	\$176,062	\$174,576	\$158,009
2016-2021 Annual Rate	0.35%	1.21%	1.56%
Per Capita Income			
2016 Per Capita Income	\$60,103	\$57,409	\$54,464
2021 Per Capita Income	\$61,230	\$60,752	\$58,474
2016-2021 Annual Rate	0.37%	1.14%	1.43%

Current median household income is \$108,272 in the area, compared to \$54,149 for all U.S. households. Median household income is projected to be \$118,079 in five years, compared to \$59,476 for all U.S. households

Current average household income is \$146,257 in this area, compared to \$77,008 for all U.S. households. Average household income is projected to be \$158,009 in five years, compared to \$84,021 for all U.S. households

Current per capita income is \$54,464 in the area, compared to the U.S. per capita income of \$29,472. The per capita income is projected to be \$58,474 in five years, compared to \$32,025 for all U.S. households

Housing			
2000 Total Housing Units	424	4,225	21,317
2000 Owner Occupied Housing Units	366	3,802	17,473
2000 Renter Occupied Housing Units	58	364	3,427
2000 Vacant Housing Units	0	59	417
2010 Total Housing Units	625	6,957	28,604
2010 Owner Occupied Housing Units	546	6,035	22,117
2010 Renter Occupied Housing Units	66	656	5,194
2010 Vacant Housing Units	13	266	1,293
2016 Total Housing Units	654	8,310	31,586
2016 Owner Occupied Housing Units	565	7,298	24,680
2016 Renter Occupied Housing Units	72	860	5,850
2016 Vacant Housing Units	17	151	1,056
2021 Total Housing Units	733	9,474	34,417
2021 Owner Occupied Housing Units	633	8,253	26,974
2021 Renter Occupied Housing Units	81	975	6,228
2021 Vacant Housing Units	19	245	1,215

Currently, 78.1% of the 31,586 housing units in the area are owner occupied; 18.5%, renter occupied; and 3.3% are vacant. Currently, in the U.S., 55.4% of the housing units in the area are owner occupied; 32.9% are renter occupied; and 11.7% are vacant. In 2010, there were 28,604 housing units in the area - 77.3% owner occupied, 18.2% renter occupied, and 4.5% vacant. The annual rate of change in housing units since 2010 is 4.51%. Median home value in the area is \$378,110, compared to a median home value of \$198,891 for the U.S. In five years, median value is projected to change by 0.65% annually to \$390,623.

Data Note: Income is expressed in current dollars

Source: U.S. Census Bureau, Census 2010 Summary File 1. Esri forecasts for 2016 and 2021. Esri converted Census 2000 data into 2010 geography.

February 03, 2017



2010 Census Profile

3672 Pinto Dr, Medina, Minnesota, 55340
 Ring: 1 mile radius

Colliers International
 Latitude: 45.04444
 Longitude: -93.54244

	2000	2010	2000-2010 Annual Rate
Population	1,287	1,752	3.13%
Households	424	612	3.74%
Housing Units	424	625	3.96%
Population by Race			
		Number	Percent
Total		1,752	100.0%
Population Reporting One Race		1,729	98.7%
White		1,640	93.6%
Black		21	1.2%
American Indian		1	0.1%
Asian		61	3.5%
Pacific Islander		1	0.1%
Some Other Race		5	0.3%
Population Reporting Two or More Races		23	1.3%
Total Hispanic Population		20	1.1%
Population by Sex			
Male		871	49.7%
Female		881	50.3%
Population by Age			
Total		1,751	100.0%
Age 0 - 4		93	5.3%
Age 5 - 9		152	8.7%
Age 10 - 14		187	10.7%
Age 15 - 19		155	8.9%
Age 20 - 24		49	2.8%
Age 25 - 29		43	2.5%
Age 30 - 34		56	3.2%
Age 35 - 39		92	5.3%
Age 40 - 44		163	9.3%
Age 45 - 49		204	11.7%
Age 50 - 54		162	9.3%
Age 55 - 59		113	6.5%
Age 60 - 64		83	4.7%
Age 65 - 69		59	3.4%
Age 70 - 74		52	3.0%
Age 75 - 79		35	2.0%
Age 80 - 84		32	1.8%
Age 85+		21	1.2%
Age 18+		1,201	68.6%
Age 65+		199	11.4%

Data Note: Hispanic population can be of any race. Census 2010 medians are computed from reported data distributions.
Source: U.S. Census Bureau, Census 2010 Summary File 1. Esri converted Census 2000 data into 2010 geography.



2010 Census Profile

3672 Pinto Dr, Medina, Minnesota, 55340
Ring: 1 mile radius

Colliers International
Latitude: 45.04444
Longitude: -93.54244

Households by Type		
Total	611	100.0%
Households with 1 Person	110	18.0%
Households with 2+ People	501	82.0%
Family Households	481	78.7%
Husband-wife Families	439	71.8%
With Own Children	243	39.8%
Other Family (No Spouse Present)	42	6.9%
With Own Children	21	3.4%
Nonfamily Households	20	3.3%
All Households with Children	271	44.3%
Multigenerational Households	8	1.3%
Unmarried Partner Households	17	2.8%
Male-female	15	2.5%
Same-sex	2	0.3%
Average Household Size	2.86	

Family Households by Size		
Total	481	100.0%
2 People	175	36.4%
3 People	102	21.2%
4 People	114	23.7%
5 People	67	13.9%
6 People	17	3.5%
7+ People	6	1.2%
Average Family Size	3.29	

Nonfamily Households by Size		
Total	130	100.0%
1 Person	110	84.6%
2 People	17	13.1%
3 People	2	1.5%
4 People	1	0.8%
5 People	0	0.0%
6 People	0	0.0%
7+ People	0	0.0%
Average Nonfamily Size	1.20	

Population by Relationship and Household Type		
Total	1,752	100.0%
In Households	1,752	100.0%
In Family Households	1,595	91.0%
Householder	480	27.4%
Spouse	438	25.0%
Child	648	37.0%
Other relative	16	0.9%
Nonrelative	13	0.7%
In Nonfamily Households	157	9.0%
In Group Quarters	0	0.0%
Institutionalized Population	0	0.0%
Noninstitutionalized Population	0	0.0%

Data Note: Households with children include any households with people under age 18, related or not. Multigenerational households are families with 3 or more parent-child relationships. Unmarried partner households are usually classified as nonfamily households unless there is another member of the household related to the householder. Multigenerational and unmarried partner households are reported only to the tract level. Esri estimated block group data, which is used to estimate polygons or non-standard geography. Average family size excludes nonrelatives.

Source: U.S. Census Bureau, Census 2010 Summary File 1.



2010 Census Profile

3672 Pinto Dr, Medina, Minnesota, 55340
Ring: 1 mile radius

Colliers International
Latitude: 45.04444
Longitude: -93.54244

Family Households by Age of Householder		
Total	482	100.0%
Householder Age 15 - 44	140	29.0%
Householder Age 45 - 54	176	36.5%
Householder Age 55 - 64	87	18.0%
Householder Age 65 - 74	47	9.8%
Householder Age 75+	32	6.6%

Nonfamily Households by Age of Householder		
Total	129	100.0%
Householder Age 15 - 44	25	19.4%
Householder Age 45 - 54	23	17.8%
Householder Age 55 - 64	27	20.9%
Householder Age 65 - 74	21	16.3%
Householder Age 75+	33	25.6%

Households by Race of Householder		
Total	611	100.0%
Householder is White Alone	584	95.6%
Householder is Black Alone	5	0.8%
Householder is American Indian Alone	0	0.0%
Householder is Asian Alone	16	2.6%
Householder is Pacific Islander Alone	0	0.0%
Householder is Some Other Race Alone	3	0.5%
Householder is Two or More Races	3	0.5%
Households with Hispanic Householder	5	0.8%

Husband-wife Families by Race of Householder		
Total	438	100.0%
Householder is White Alone	415	94.7%
Householder is Black Alone	5	1.1%
Householder is American Indian Alone	0	0.0%
Householder is Asian Alone	15	3.4%
Householder is Pacific Islander Alone	0	0.0%
Householder is Some Other Race Alone	2	0.5%
Householder is Two or More Races	1	0.2%
Husband-wife Families with Hispanic Householder	3	0.7%

Other Families (No Spouse) by Race of Householder		
Total	41	100.0%
Householder is White Alone	41	100.0%
Householder is Black Alone	0	0.0%
Householder is American Indian Alone	0	0.0%
Householder is Asian Alone	0	0.0%
Householder is Pacific Islander Alone	0	0.0%
Householder is Some Other Race Alone	0	0.0%
Householder is Two or More Races	0	0.0%
Other Families with Hispanic Householder	1	2.4%

Nonfamily Households by Race of Householder		
Total	131	100.0%
Householder is White Alone	128	97.7%
Householder is Black Alone	0	0.0%
Householder is American Indian Alone	0	0.0%
Householder is Asian Alone	0	0.0%
Householder is Pacific Islander Alone	0	0.0%
Householder is Some Other Race Alone	1	0.8%
Householder is Two or More Races	2	1.5%
Nonfamily Households with Hispanic Householder	1	0.8%

Source: U.S. Census Bureau, Census 2010 Summary File 1.



2010 Census Profile

3672 Pinto Dr, Medina, Minnesota, 55340
Ring: 1 mile radius

Colliers International
Latitude: 45.04444
Longitude: -93.54244

Total Housing Units by Occupancy

Total	636	100.0%
Occupied Housing Units	612	96.2%
Vacant Housing Units		
For Rent	2	0.3%
Rented, not Occupied	1	0.2%
For Sale Only	9	1.4%
Sold, not Occupied	1	0.2%
For Seasonal/Recreational/Occasional Use	7	1.1%
For Migrant Workers	0	0.0%
Other Vacant	4	0.6%
Total Vacancy Rate	2.1%	

Households by Tenure and Mortgage Status

Total	612	100.0%
Owner Occupied	546	89.2%
Owned with a Mortgage/Loan	423	69.1%
Owned Free and Clear	123	20.1%
Average Household Size	2.97	
Renter Occupied	66	10.8%
Average Household Size	1.98	

Owner-occupied Housing Units by Race of Householder

Total	546	100.0%
Householder is White Alone	521	95.4%
Householder is Black Alone	5	0.9%
Householder is American Indian Alone	0	0.0%
Householder is Asian Alone	16	2.9%
Householder is Pacific Islander Alone	0	0.0%
Householder is Some Other Race Alone	2	0.4%
Householder is Two or More Races	2	0.4%
Owner-occupied Housing Units with Hispanic Householder	4	0.7%

Renter-occupied Housing Units by Race of Householder

Total	66	100.0%
Householder is White Alone	63	95.5%
Householder is Black Alone	1	1.5%
Householder is American Indian Alone	0	0.0%
Householder is Asian Alone	0	0.0%
Householder is Pacific Islander Alone	0	0.0%
Householder is Some Other Race Alone	1	1.5%
Householder is Two or More Races	1	1.5%
Renter-occupied Housing Units with Hispanic Householder	1	1.5%

Average Household Size by Race/Hispanic Origin of Householder

Householder is White Alone	2.83
Householder is Black Alone	4.00
Householder is American Indian Alone	0.00
Householder is Asian Alone	3.62
Householder is Pacific Islander Alone	0.00
Householder is Some Other Race Alone	2.67
Householder is Two or More Races	2.33
Householder is Hispanic	2.80

Source: U.S. Census Bureau, Census 2010 Summary File 1.



2010 Census Profile

3672 Pinto Dr, Medina, Minnesota, 55340
Ring: 3 mile radius

Colliers International
Latitude: 45.04444
Longitude: -93.54244

	2000	2010	2000-2010 Annual Rate
Population	13,411	19,518	3.82%
Households	4,166	6,691	4.85%
Housing Units	4,225	6,957	5.11%
Population by Race			
		Number	Percent
Total		19,519	100.0%
Population Reporting One Race		19,139	98.1%
White		16,704	85.6%
Black		467	2.4%
American Indian		25	0.1%
Asian		1,809	9.3%
Pacific Islander		10	0.1%
Some Other Race		124	0.6%
Population Reporting Two or More Races		380	1.9%
Total Hispanic Population		431	2.2%
Population by Sex			
Male		9,523	48.8%
Female		9,995	51.2%
Population by Age			
Total		19,522	100.0%
Age 0 - 4		1,194	6.1%
Age 5 - 9		1,767	9.1%
Age 10 - 14		1,890	9.7%
Age 15 - 19		1,524	7.8%
Age 20 - 24		581	3.0%
Age 25 - 29		742	3.8%
Age 30 - 34		940	4.8%
Age 35 - 39		1,359	7.0%
Age 40 - 44		1,744	8.9%
Age 45 - 49		1,917	9.8%
Age 50 - 54		1,697	8.7%
Age 55 - 59		1,219	6.2%
Age 60 - 64		895	4.6%
Age 65 - 69		692	3.5%
Age 70 - 74		472	2.4%
Age 75 - 79		328	1.7%
Age 80 - 84		283	1.4%
Age 85+		274	1.4%
Age 18+		13,505	69.2%
Age 65+		2,049	10.5%

Data Note: Hispanic population can be of any race. Census 2010 medians are computed from reported data distributions.
Source: U.S. Census Bureau, Census 2010 Summary File 1. Esri converted Census 2000 data into 2010 geography.



2010 Census Profile

3672 Pinto Dr, Medina, Minnesota, 55340
Ring: 3 mile radius

Colliers International
Latitude: 45.04444
Longitude: -93.54244

Households by Type		
Total	6,690	100.0%
Households with 1 Person	1,126	16.8%
Households with 2+ People	5,564	83.2%
Family Households	5,322	79.6%
Husband-wife Families	4,734	70.8%
With Own Children	2,556	38.2%
Other Family (No Spouse Present)	588	8.8%
With Own Children	360	5.4%
Nonfamily Households	242	3.6%
All Households with Children	2,995	44.8%
Multigenerational Households	123	1.8%
Unmarried Partner Households	220	3.3%
Male-female	191	2.9%
Same-sex	29	0.4%
Average Household Size	2.90	

Family Households by Size		
Total	5,322	100.0%
2 People	1,987	37.3%
3 People	1,124	21.1%
4 People	1,392	26.2%
5 People	601	11.3%
6 People	155	2.9%
7+ People	63	1.2%
Average Family Size	3.30	

Nonfamily Households by Size		
Total	1,368	100.0%
1 Person	1,126	82.3%
2 People	205	15.0%
3 People	21	1.5%
4 People	12	0.9%
5 People	3	0.2%
6 People	1	0.1%
7+ People	0	0.0%
Average Nonfamily Size	1.25	

Population by Relationship and Household Type		
Total	19,518	100.0%
In Households	19,424	99.5%
In Family Households	17,718	90.8%
Householder	5,432	27.8%
Spouse	4,831	24.8%
Child	7,023	36.0%
Other relative	273	1.4%
Nonrelative	158	0.8%
In Nonfamily Households	1,706	8.7%
In Group Quarters	94	0.5%
Institutionalized Population	54	0.3%
Noninstitutionalized Population	40	0.2%

Data Note: Households with children include any households with people under age 18, related or not. Multigenerational households are families with 3 or more parent-child relationships. Unmarried partner households are usually classified as nonfamily households unless there is another member of the household related to the householder. Multigenerational and unmarried partner households are reported only to the tract level. Esri estimated block group data, which is used to estimate polygons or non-standard geography. Average family size excludes nonrelatives.

Source: U.S. Census Bureau, Census 2010 Summary File 1.



2010 Census Profile

3672 Pinto Dr, Medina, Minnesota, 55340
Ring: 3 mile radius

Colliers International
Latitude: 45.04444
Longitude: -93.54244

Family Households by Age of Householder		
Total	5,323	100.0%
Householder Age 15 - 44	1,897	35.6%
Householder Age 45 - 54	1,706	32.0%
Householder Age 55 - 64	954	17.9%
Householder Age 65 - 74	489	9.2%
Householder Age 75+	277	5.2%

Nonfamily Households by Age of Householder		
Total	1,367	100.0%
Householder Age 15 - 44	410	30.0%
Householder Age 45 - 54	224	16.4%
Householder Age 55 - 64	236	17.3%
Householder Age 65 - 74	185	13.5%
Householder Age 75+	312	22.8%

Households by Race of Householder		
Total	6,691	100.0%
Householder is White Alone	5,967	89.2%
Householder is Black Alone	129	1.9%
Householder is American Indian Alone	5	0.1%
Householder is Asian Alone	512	7.7%
Householder is Pacific Islander Alone	2	0.0%
Householder is Some Other Race Alone	28	0.4%
Householder is Two or More Races	48	0.7%
Households with Hispanic Householder	93	1.4%

Husband-wife Families by Race of Householder		
Total	4,736	100.0%
Householder is White Alone	4,149	87.6%
Householder is Black Alone	80	1.7%
Householder is American Indian Alone	5	0.1%
Householder is Asian Alone	454	9.6%
Householder is Pacific Islander Alone	0	0.0%
Householder is Some Other Race Alone	19	0.4%
Householder is Two or More Races	29	0.6%
Husband-wife Families with Hispanic Householder	63	1.3%

Other Families (No Spouse) by Race of Householder		
Total	588	100.0%
Householder is White Alone	509	86.6%
Householder is Black Alone	37	6.3%
Householder is American Indian Alone	0	0.0%
Householder is Asian Alone	29	4.9%
Householder is Pacific Islander Alone	2	0.3%
Householder is Some Other Race Alone	3	0.5%
Householder is Two or More Races	8	1.4%
Other Families with Hispanic Householder	19	3.2%

Nonfamily Households by Race of Householder		
Total	1,369	100.0%
Householder is White Alone	1,309	95.6%
Householder is Black Alone	13	0.9%
Householder is American Indian Alone	1	0.1%
Householder is Asian Alone	29	2.1%
Householder is Pacific Islander Alone	0	0.0%
Householder is Some Other Race Alone	6	0.4%
Householder is Two or More Races	11	0.8%
Nonfamily Households with Hispanic Householder	11	0.8%

Source: U.S. Census Bureau, Census 2010 Summary File 1.



2010 Census Profile

3672 Pinto Dr, Medina, Minnesota, 55340
Ring: 3 mile radius

Colliers International
Latitude: 45.04444
Longitude: -93.54244

Total Housing Units by Occupancy

Total	6,946	100.0%
Occupied Housing Units	6,691	96.3%
Vacant Housing Units		
For Rent	26	0.4%
Rented, not Occupied	2	0.0%
For Sale Only	98	1.4%
Sold, not Occupied	22	0.3%
For Seasonal/Recreational/Occasional Use	52	0.7%
For Migrant Workers	0	0.0%
Other Vacant	55	0.8%
Total Vacancy Rate	3.8%	

Households by Tenure and Mortgage Status

Total	6,691	100.0%
Owner Occupied	6,035	90.2%
Owned with a Mortgage/Loan	4,964	74.2%
Owned Free and Clear	1,071	16.0%
Average Household Size	2.95	
Renter Occupied	656	9.8%
Average Household Size	2.46	

Owner-occupied Housing Units by Race of Householder

Total	6,035	100.0%
Householder is White Alone	5,421	89.8%
Householder is Black Alone	76	1.3%
Householder is American Indian Alone	5	0.1%
Householder is Asian Alone	478	7.9%
Householder is Pacific Islander Alone	2	0.0%
Householder is Some Other Race Alone	18	0.3%
Householder is Two or More Races	35	0.6%
Owner-occupied Housing Units with Hispanic Householder	71	1.2%

Renter-occupied Housing Units by Race of Householder

Total	657	100.0%
Householder is White Alone	546	83.1%
Householder is Black Alone	53	8.1%
Householder is American Indian Alone	0	0.0%
Householder is Asian Alone	34	5.2%
Householder is Pacific Islander Alone	1	0.2%
Householder is Some Other Race Alone	10	1.5%
Householder is Two or More Races	13	2.0%
Renter-occupied Housing Units with Hispanic Householder	21	3.2%

Average Household Size by Race/Hispanic Origin of Householder

Householder is White Alone	2.82
Householder is Black Alone	3.88
Householder is American Indian Alone	3.40
Householder is Asian Alone	3.51
Householder is Pacific Islander Alone	5.00
Householder is Some Other Race Alone	3.54
Householder is Two or More Races	3.44
Householder is Hispanic	3.63

Source: U.S. Census Bureau, Census 2010 Summary File 1.



2010 Census Profile

3672 Pinto Dr, Medina, Minnesota, 55340
 Ring: 5 mile radius

Colliers International
 Latitude: 45.04444
 Longitude: -93.54244

	2000	2010	2000-2010 Annual Rate
Population	59,211	72,868	2.10%
Households	20,901	27,311	2.71%
Housing Units	21,317	28,604	2.98%
Population by Race			
		Number	Percent
Total		72,869	100.0%
Population Reporting One Race		71,381	98.0%
White		62,324	85.5%
Black		2,795	3.8%
American Indian		151	0.2%
Asian		5,567	7.6%
Pacific Islander		26	0.0%
Some Other Race		518	0.7%
Population Reporting Two or More Races		1,488	2.0%
Total Hispanic Population		1,697	2.3%
Population by Sex			
Male		35,675	49.0%
Female		37,193	51.0%
Population by Age			
Total		72,865	100.0%
Age 0 - 4		4,762	6.5%
Age 5 - 9		5,881	8.1%
Age 10 - 14		6,062	8.3%
Age 15 - 19		4,985	6.8%
Age 20 - 24		2,934	4.0%
Age 25 - 29		4,227	5.8%
Age 30 - 34		4,252	5.8%
Age 35 - 39		5,199	7.1%
Age 40 - 44		6,037	8.3%
Age 45 - 49		6,589	9.0%
Age 50 - 54		6,231	8.6%
Age 55 - 59		4,913	6.7%
Age 60 - 64		3,698	5.1%
Age 65 - 69		2,556	3.5%
Age 70 - 74		1,676	2.3%
Age 75 - 79		1,177	1.6%
Age 80 - 84		930	1.3%
Age 85+		761	1.0%
Age 18+		52,518	72.1%
Age 65+		7,100	9.7%

Data Note: Hispanic population can be of any race. Census 2010 medians are computed from reported data distributions.
Source: U.S. Census Bureau, Census 2010 Summary File 1. Esri converted Census 2000 data into 2010 geography.



2010 Census Profile

3672 Pinto Dr, Medina, Minnesota, 55340
Ring: 5 mile radius

Colliers International
Latitude: 45.04444
Longitude: -93.54244

Households by Type		
Total	27,310	100.0%
Households with 1 Person	5,924	21.7%
Households with 2+ People	21,386	78.3%
Family Households	19,975	73.1%
Husband-wife Families	17,188	62.9%
With Own Children	8,698	31.8%
Other Family (No Spouse Present)	2,787	10.2%
With Own Children	1,687	6.2%
Nonfamily Households	1,411	5.2%
All Households with Children	10,707	39.2%
Multigenerational Households	440	1.6%
Unmarried Partner Households	1,241	4.5%
Male-female	1,091	4.0%
Same-sex	150	0.5%
Average Household Size	2.64	

Family Households by Size		
Total	19,975	100.0%
2 People	8,004	40.1%
3 People	4,421	22.1%
4 People	4,864	24.4%
5 People	1,962	9.8%
6 People	527	2.6%
7+ People	197	1.0%
Average Family Size	3.13	

Nonfamily Households by Size		
Total	7,337	100.0%
1 Person	5,924	80.7%
2 People	1,231	16.8%
3 People	122	1.7%
4 People	45	0.6%
5 People	12	0.2%
6 People	3	0.0%
7+ People	0	0.0%
Average Nonfamily Size	1.22	

Population by Relationship and Household Type		
Total	72,868	100.0%
In Households	72,193	99.1%
In Family Households	63,207	86.7%
Householder	19,963	27.4%
Spouse	17,174	23.6%
Child	24,145	33.1%
Other relative	1,173	1.6%
Nonrelative	753	1.0%
In Nonfamily Households	8,986	12.3%
In Group Quarters	675	0.9%
Institutionalized Population	560	0.8%
Noninstitutionalized Population	115	0.2%

Data Note: Households with children include any households with people under age 18, related or not. Multigenerational households are families with 3 or more parent-child relationships. Unmarried partner households are usually classified as nonfamily households unless there is another member of the household related to the householder. Multigenerational and unmarried partner households are reported only to the tract level. Esri estimated block group data, which is used to estimate polygons or non-standard geography. Average family size excludes nonrelatives.

Source: U.S. Census Bureau, Census 2010 Summary File 1.



2010 Census Profile

3672 Pinto Dr, Medina, Minnesota, 55340
Ring: 5 mile radius

Colliers International
Latitude: 45.04444
Longitude: -93.54244

Family Households by Age of Householder		
Total		19,973 100.0%
Householder Age 15 - 44	7,674	38.4%
Householder Age 45 - 54	5,851	29.3%
Householder Age 55 - 64	3,789	19.0%
Householder Age 65 - 74	1,715	8.6%
Householder Age 75+	944	4.7%

Nonfamily Households by Age of Householder		
Total	7,336	100.0%
Householder Age 15 - 44	2,804	38.2%
Householder Age 45 - 54	1,284	17.5%
Householder Age 55 - 64	1,288	17.6%
Householder Age 65 - 74	901	12.3%
Householder Age 75+	1,059	14.4%

Households by Race of Householder		
Total	27,312	100.0%
Householder is White Alone	24,444	89.5%
Householder is Black Alone	815	3.0%
Householder is American Indian Alone	35	0.1%
Householder is Asian Alone	1,657	6.1%
Householder is Pacific Islander Alone	8	0.0%
Householder is Some Other Race Alone	125	0.5%
Householder is Two or More Races	228	0.8%
Households with Hispanic Householder	427	1.6%

Husband-wife Families by Race of Householder		
Total	17,188	100.0%
Householder is White Alone	15,294	89.0%
Householder is Black Alone	341	2.0%
Householder is American Indian Alone	18	0.1%
Householder is Asian Alone	1,355	7.9%
Householder is Pacific Islander Alone	2	0.0%
Householder is Some Other Race Alone	73	0.4%
Householder is Two or More Races	105	0.6%
Husband-wife Families with Hispanic Householder	254	1.5%

Other Families (No Spouse) by Race of Householder		
Total	2,789	100.0%
Householder is White Alone	2,277	81.6%
Householder is Black Alone	300	10.8%
Householder is American Indian Alone	6	0.2%
Householder is Asian Alone	122	4.4%
Householder is Pacific Islander Alone	4	0.1%
Householder is Some Other Race Alone	24	0.9%
Householder is Two or More Races	56	2.0%
Other Families with Hispanic Householder	84	3.0%

Nonfamily Households by Race of Householder		
Total	7,336	100.0%
Householder is White Alone	6,873	93.7%
Householder is Black Alone	174	2.4%
Householder is American Indian Alone	11	0.1%
Householder is Asian Alone	180	2.5%
Householder is Pacific Islander Alone	3	0.0%
Householder is Some Other Race Alone	28	0.4%
Householder is Two or More Races	67	0.9%
Nonfamily Households with Hispanic Householder	89	1.2%

Source: U.S. Census Bureau, Census 2010 Summary File 1.



2010 Census Profile

3672 Pinto Dr, Medina, Minnesota, 55340
Ring: 5 mile radius

Colliers International
Latitude: 45.04444
Longitude: -93.54244

Total Housing Units by Occupancy

Total	28,590	100.0%
Occupied Housing Units	27,311	95.5%
Vacant Housing Units		
For Rent	333	1.2%
Rented, not Occupied	36	0.1%
For Sale Only	394	1.4%
Sold, not Occupied	91	0.3%
For Seasonal/Recreational/Occasional Use	249	0.9%
For Migrant Workers	0	0.0%
Other Vacant	176	0.6%
Total Vacancy Rate	4.5%	

Households by Tenure and Mortgage Status

Total	27,311	100.0%
Owner Occupied	22,117	81.0%
Owned with a Mortgage/Loan	18,219	66.7%
Owned Free and Clear	3,898	14.3%
Average Household Size	2.75	
Renter Occupied	5,194	19.0%
Average Household Size	2.20	

Owner-occupied Housing Units by Race of Householder

Total	22,117	100.0%
Householder is White Alone	20,361	92.1%
Householder is Black Alone	278	1.3%
Householder is American Indian Alone	22	0.1%
Householder is Asian Alone	1,268	5.7%
Householder is Pacific Islander Alone	4	0.0%
Householder is Some Other Race Alone	57	0.3%
Householder is Two or More Races	127	0.6%
Owner-occupied Housing Units with Hispanic Householder	256	1.2%

Renter-occupied Housing Units by Race of Householder

Total	5,193	100.0%
Householder is White Alone	4,083	78.6%
Householder is Black Alone	537	10.3%
Householder is American Indian Alone	13	0.3%
Householder is Asian Alone	388	7.5%
Householder is Pacific Islander Alone	4	0.1%
Householder is Some Other Race Alone	67	1.3%
Householder is Two or More Races	101	1.9%
Renter-occupied Housing Units with Hispanic Householder	171	3.3%

Average Household Size by Race/Hispanic Origin of Householder

Householder is White Alone	2.58
Householder is Black Alone	3.15
Householder is American Indian Alone	2.37
Householder is Asian Alone	3.29
Householder is Pacific Islander Alone	4.12
Householder is Some Other Race Alone	3.22
Householder is Two or More Races	2.84
Householder is Hispanic	3.11

Source: U.S. Census Bureau, Census 2010 Summary File 1.



Demographic and Income Comparison Profile

3672 Pinto Dr, Medina, Minnesota, 55340
Rings: 1, 3, 5 mile radii

Colliers International
Latitude: 45.04444
Longitude: -93.54244

	1 mile	3 miles	5 miles
Census 2010 Summary			
Population	1,752	19,518	72,868
Households	612	6,691	27,311
Families	481	5,322	19,975
Average Household Size	2.86	2.90	2.64
Owner Occupied Housing Units	546	6,035	22,117
Renter Occupied Housing Units	66	656	5,194
Median Age	41.5	39.1	38.2
2016 Summary			
Population	1,808	23,910	82,158
Households	637	8,159	30,530
Families	499	6,464	22,395
Average Household Size	2.84	2.92	2.67
Owner Occupied Housing Units	565	7,298	24,680
Renter Occupied Housing Units	72	860	5,850
Median Age	42.5	40.1	39.1
Median Household Income	\$113,062	\$129,382	\$108,272
Average Household Income	\$172,991	\$164,363	\$146,257
2021 Summary			
Population	2,028	27,130	89,873
Households	714	9,229	33,202
Families	558	7,302	24,406
Average Household Size	2.84	2.93	2.69
Owner Occupied Housing Units	633	8,253	26,974
Renter Occupied Housing Units	81	975	6,228
Median Age	44.8	40.0	39.6
Median Household Income	\$117,646	\$139,158	\$118,079
Average Household Income	\$176,062	\$174,576	\$158,009
Trends: 2016-2021 Annual Rate			
Population	2.32%	2.56%	1.81%
Households	2.31%	2.50%	1.69%
Families	2.26%	2.47%	1.73%
Owner Households	2.30%	2.49%	1.79%
Median Household Income	0.80%	1.47%	1.75%

Source: U.S. Census Bureau, Census 2010 Summary File 1. Esri forecasts for 2016 and 2021.



Demographic and Income Comparison Profile

3672 Pinto Dr, Medina, Minnesota, 55340
Rings: 1, 3, 5 mile radii

Colliers International
Latitude: 45.04444
Longitude: -93.54244

2016 Households by Income	1 mile		3 miles		5 miles	
	Number	Percent	Number	Percent	Number	Percent
<\$15,000	23	3.6%	228	2.8%	1,034	3.4%
\$15,000 - \$24,999	22	3.5%	169	2.1%	1,024	3.4%
\$25,000 - \$34,999	22	3.5%	274	3.4%	1,194	3.9%
\$35,000 - \$49,999	39	6.1%	488	6.0%	2,360	7.7%
\$50,000 - \$74,999	92	14.4%	863	10.6%	4,087	13.4%
\$75,000 - \$99,999	108	17.0%	1,053	12.9%	4,202	13.8%
\$100,000 - \$149,999	38	6.0%	1,488	18.2%	5,887	19.3%
\$150,000 - \$199,999	73	11.5%	1,402	17.2%	4,138	13.6%
\$200,000+	219	34.4%	2,193	26.9%	6,606	21.6%
Median Household Income	\$113,062		\$129,382		\$108,272	
Average Household Income	\$172,991		\$164,363		\$146,257	
Per Capita Income	\$60,103		\$57,409		\$54,464	

2021 Households by Income	1 mile		3 miles		5 miles	
	Number	Percent	Number	Percent	Number	Percent
<\$15,000	24	3.4%	233	2.5%	1,055	3.2%
\$15,000 - \$24,999	22	3.1%	169	1.8%	987	3.0%
\$25,000 - \$34,999	19	2.7%	242	2.6%	1,006	3.0%
\$35,000 - \$49,999	37	5.2%	439	4.8%	2,237	6.7%
\$50,000 - \$74,999	69	9.7%	745	8.1%	3,254	9.8%
\$75,000 - \$99,999	154	21.6%	1,259	13.6%	4,859	14.6%
\$100,000 - \$149,999	75	10.5%	1,817	19.7%	6,929	20.9%
\$150,000 - \$199,999	84	11.8%	1,779	19.3%	5,283	15.9%
\$200,000+	230	32.2%	2,545	27.6%	7,594	22.9%
Median Household Income	\$117,646		\$139,158		\$118,079	
Average Household Income	\$176,062		\$174,576		\$158,009	
Per Capita Income	\$61,230		\$60,752		\$58,474	

Data Note: Income is expressed in current dollars.

Source: U.S. Census Bureau, Census 2010 Summary File 1. Esri forecasts for 2016 and 2021.



Demographic and Income Comparison Profile

3672 Pinto Dr, Medina, Minnesota, 55340
Rings: 1, 3, 5 mile radii

Colliers International
Latitude: 45.04444
Longitude: -93.54244

2010 Population by Age	1 mile		3 miles		5 miles	
	Number	Percent	Number	Percent	Number	Percent
Age 0 - 4	93	5.3%	1,194	6.1%	4,762	6.5%
Age 5 - 9	152	8.7%	1,767	9.1%	5,881	8.1%
Age 10 - 14	187	10.7%	1,890	9.7%	6,062	8.3%
Age 15 - 19	155	8.9%	1,524	7.8%	4,985	6.8%
Age 20 - 24	49	2.8%	581	3.0%	2,934	4.0%
Age 25 - 34	99	5.7%	1,682	8.6%	8,479	11.6%
Age 35 - 44	255	14.6%	3,103	15.9%	11,236	15.4%
Age 45 - 54	366	20.9%	3,614	18.5%	12,820	17.6%
Age 55 - 64	196	11.2%	2,114	10.8%	8,611	11.8%
Age 65 - 74	111	6.3%	1,164	6.0%	4,232	5.8%
Age 75 - 84	67	3.8%	611	3.1%	2,107	2.9%
Age 85+	21	1.2%	274	1.4%	761	1.0%

2016 Population by Age	1 mile		3 miles		5 miles	
	Number	Percent	Number	Percent	Number	Percent
Age 0 - 4	85	4.7%	1,369	5.7%	4,976	6.1%
Age 5 - 9	118	6.5%	1,727	7.2%	5,939	7.2%
Age 10 - 14	169	9.3%	2,238	9.4%	6,803	8.3%
Age 15 - 19	160	8.8%	1,897	7.9%	5,700	6.9%
Age 20 - 24	101	5.6%	1,200	5.0%	4,172	5.1%
Age 25 - 34	138	7.6%	2,099	8.8%	9,135	11.1%
Age 35 - 44	186	10.3%	3,163	13.2%	11,400	13.9%
Age 45 - 54	344	19.0%	4,047	16.9%	12,995	15.8%
Age 55 - 64	275	15.2%	3,180	13.3%	11,122	13.5%
Age 65 - 74	135	7.5%	1,779	7.4%	6,227	7.6%
Age 75 - 84	69	3.8%	842	3.5%	2,683	3.3%
Age 85+	28	1.5%	371	1.6%	1,007	1.2%

2021 Population by Age	1 mile		3 miles		5 miles	
	Number	Percent	Number	Percent	Number	Percent
Age 0 - 4	90	4.4%	1,566	5.8%	5,387	6.0%
Age 5 - 9	113	5.6%	1,883	6.9%	6,096	6.8%
Age 10 - 14	152	7.5%	2,086	7.7%	6,675	7.4%
Age 15 - 19	166	8.2%	2,068	7.6%	6,131	6.8%
Age 20 - 24	95	4.7%	1,170	4.3%	4,097	4.6%
Age 25 - 34	182	9.0%	2,918	10.8%	10,563	11.8%
Age 35 - 44	221	10.9%	3,713	13.7%	12,724	14.2%
Age 45 - 54	312	15.4%	3,900	14.4%	12,718	14.2%
Age 55 - 64	369	18.2%	3,734	13.8%	12,268	13.7%
Age 65 - 74	202	10.0%	2,461	9.1%	8,332	9.3%
Age 75 - 84	91	4.5%	1,182	4.4%	3,635	4.0%
Age 85+	35	1.7%	450	1.7%	1,248	1.4%

Source: U.S. Census Bureau, Census 2010 Summary File 1. Esri forecasts for 2016 and 2021.



Demographic and Income Comparison Profile

3672 Pinto Dr, Medina, Minnesota, 55340
Rings: 1, 3, 5 mile radii

Colliers International
Latitude: 45.04444
Longitude: -93.54244

2010 Race and Ethnicity	1 mile		3 miles		5 miles	
	Number	Percent	Number	Percent	Number	Percent
White Alone	1,640	93.6%	16,704	85.6%	62,324	85.5%
Black Alone	21	1.2%	467	2.4%	2,795	3.8%
American Indian Alone	1	0.1%	25	0.1%	151	0.2%
Asian Alone	61	3.5%	1,809	9.3%	5,567	7.6%
Pacific Islander Alone	1	0.1%	10	0.1%	26	0.0%
Some Other Race Alone	5	0.3%	124	0.6%	518	0.7%
Two or More Races	23	1.3%	380	1.9%	1,488	2.0%
Hispanic Origin (Any Race)	20	1.1%	431	2.2%	1,697	2.3%

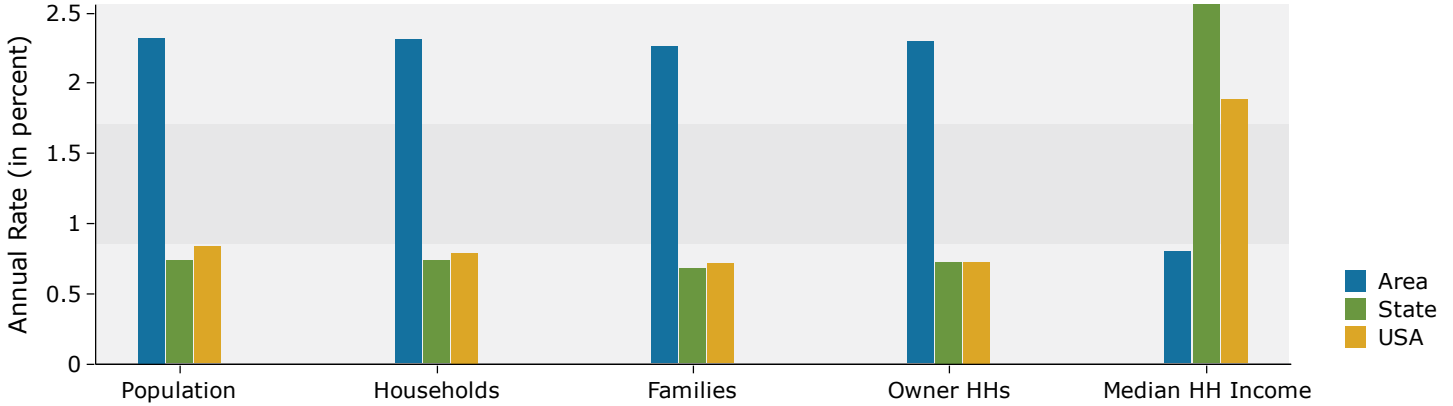
2016 Race and Ethnicity	1 mile		3 miles		5 miles	
	Number	Percent	Number	Percent	Number	Percent
White Alone	1,669	92.3%	19,697	82.4%	68,014	82.8%
Black Alone	25	1.4%	682	2.9%	3,496	4.3%
American Indian Alone	1	0.1%	27	0.1%	154	0.2%
Asian Alone	79	4.4%	2,807	11.7%	7,973	9.7%
Pacific Islander Alone	1	0.1%	13	0.1%	31	0.0%
Some Other Race Alone	6	0.3%	165	0.7%	624	0.8%
Two or More Races	27	1.5%	519	2.2%	1,867	2.3%
Hispanic Origin (Any Race)	23	1.3%	569	2.4%	2,052	2.5%

2021 Race and Ethnicity	1 mile		3 miles		5 miles	
	Number	Percent	Number	Percent	Number	Percent
White Alone	1,846	91.0%	21,638	79.8%	72,147	80.3%
Black Alone	32	1.6%	872	3.2%	4,223	4.7%
American Indian Alone	1	0.0%	31	0.1%	161	0.2%
Asian Alone	106	5.2%	3,721	13.7%	10,313	11.5%
Pacific Islander Alone	1	0.0%	15	0.1%	35	0.0%
Some Other Race Alone	8	0.4%	209	0.8%	755	0.8%
Two or More Races	35	1.7%	644	2.4%	2,240	2.5%
Hispanic Origin (Any Race)	29	1.4%	712	2.6%	2,478	2.8%

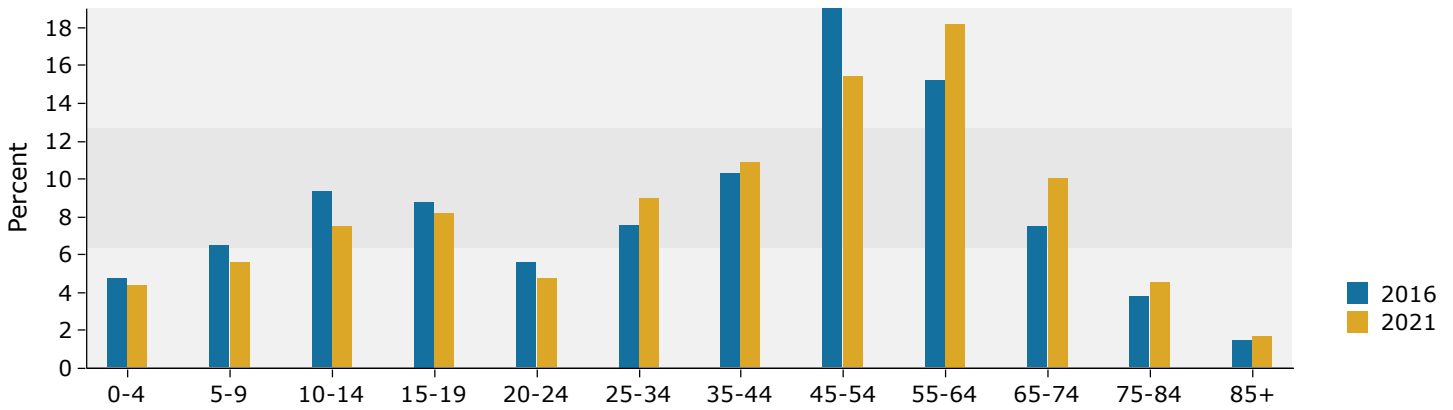
Source: U.S. Census Bureau, Census 2010 Summary File 1. Esri forecasts for 2016 and 2021.

1 mile

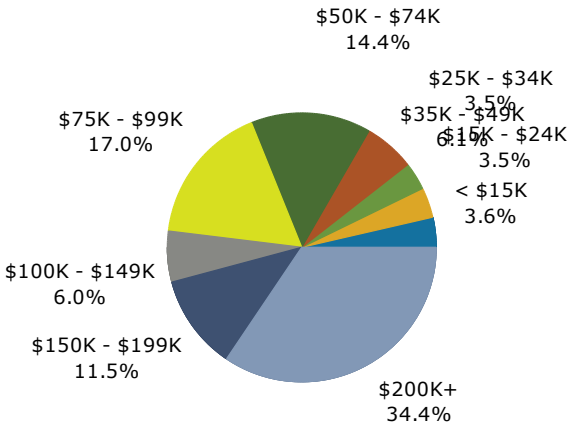
Trends 2016-2021



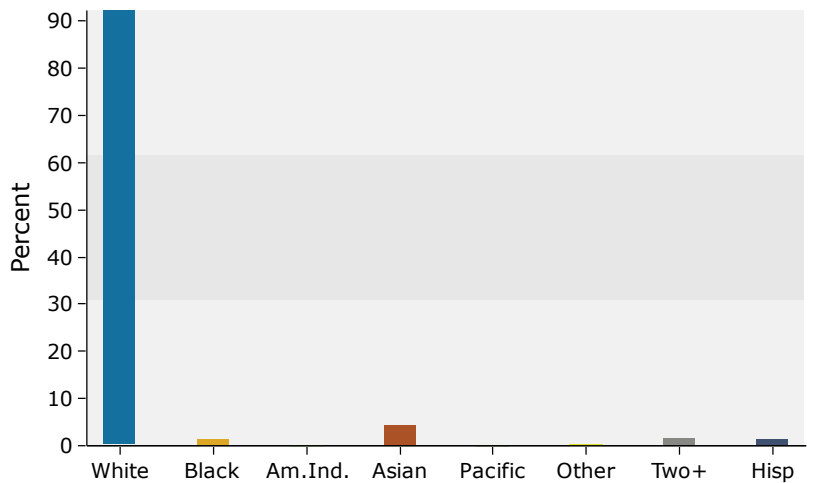
Population by Age



2016 Household Income



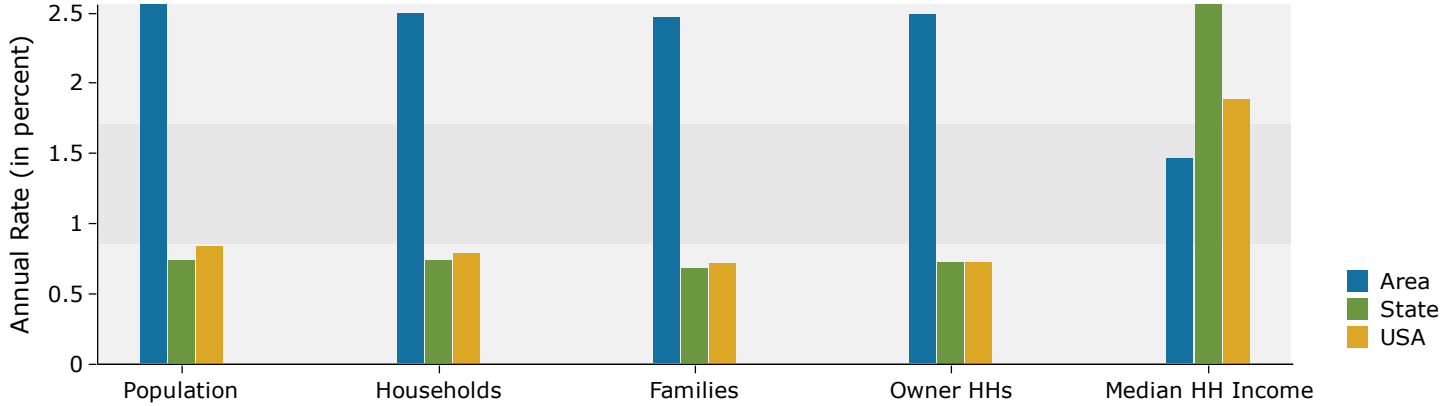
2016 Population by Race



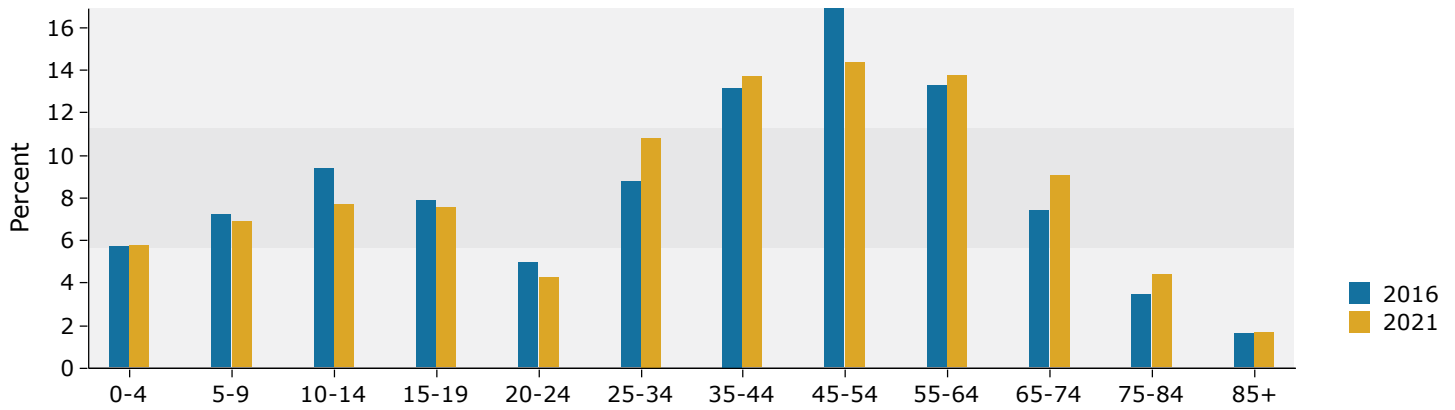
Source: U.S. Census Bureau, Census 2010 Summary File 1. Esri forecasts for 2016 and 2021.

3 miles

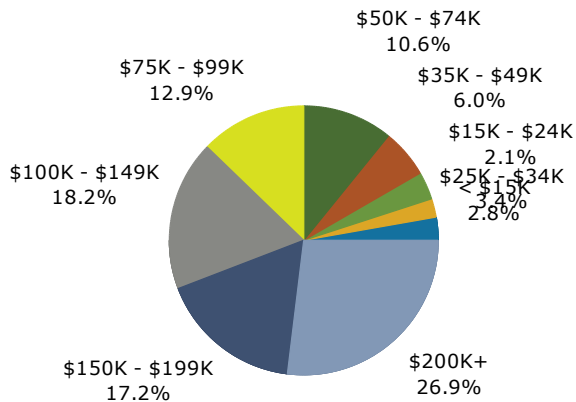
Trends 2016-2021



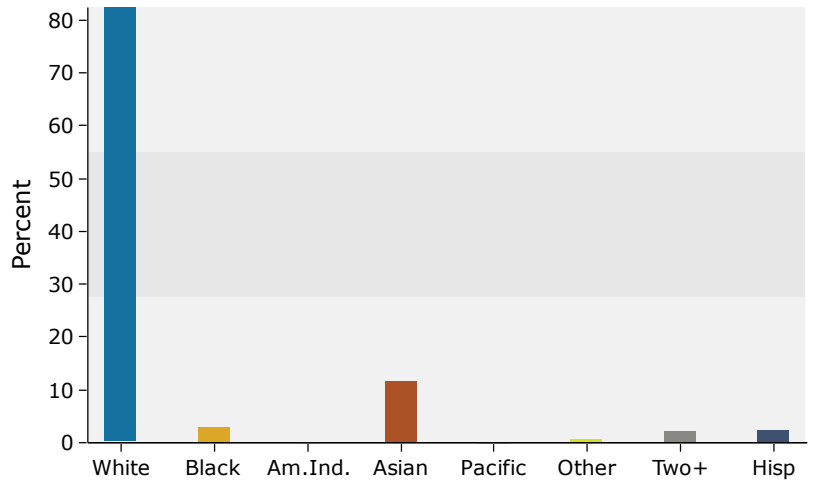
Population by Age



2016 Household Income



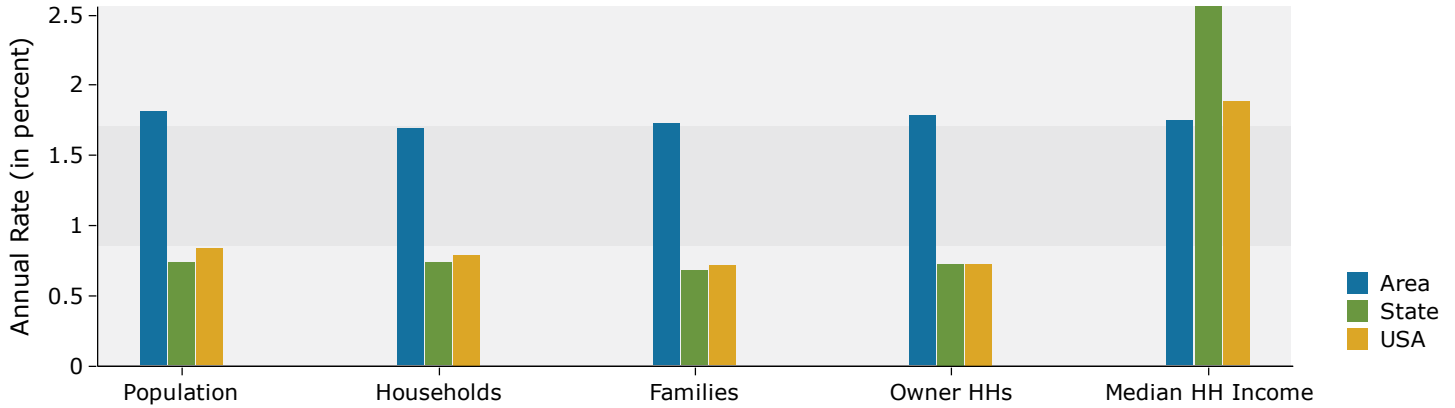
2016 Population by Race



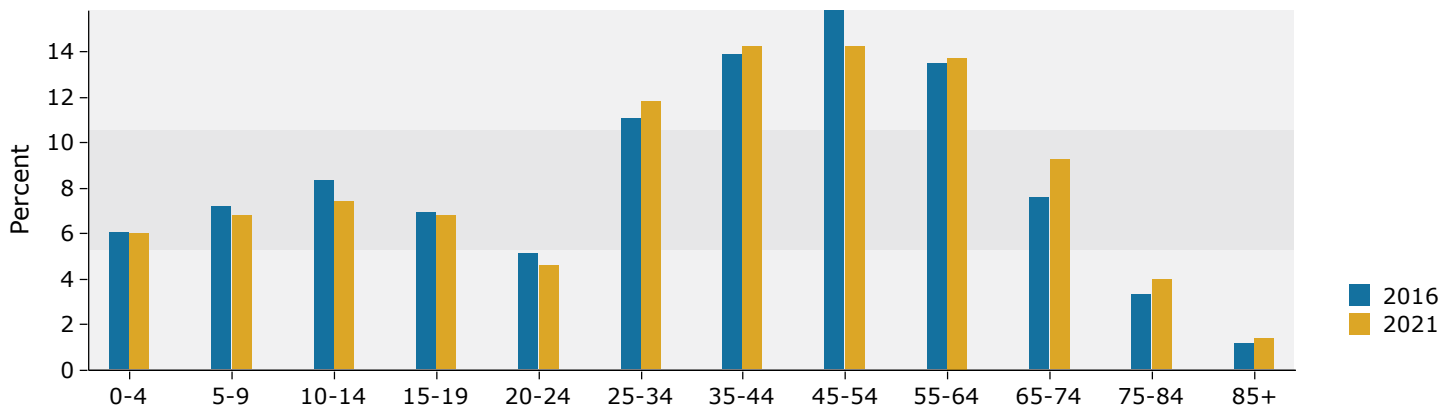
Source: U.S. Census Bureau, Census 2010 Summary File 1. Esri forecasts for 2016 and 2021.

5 miles

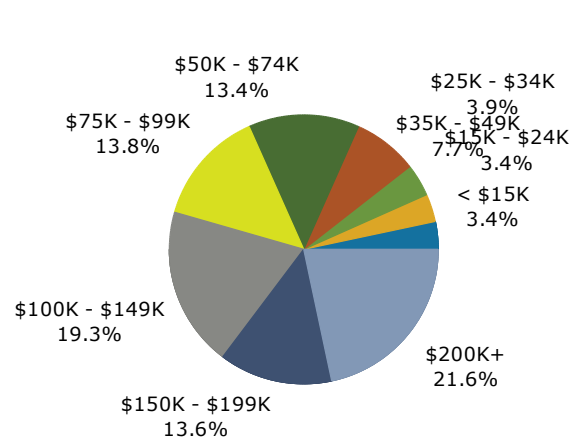
Trends 2016-2021



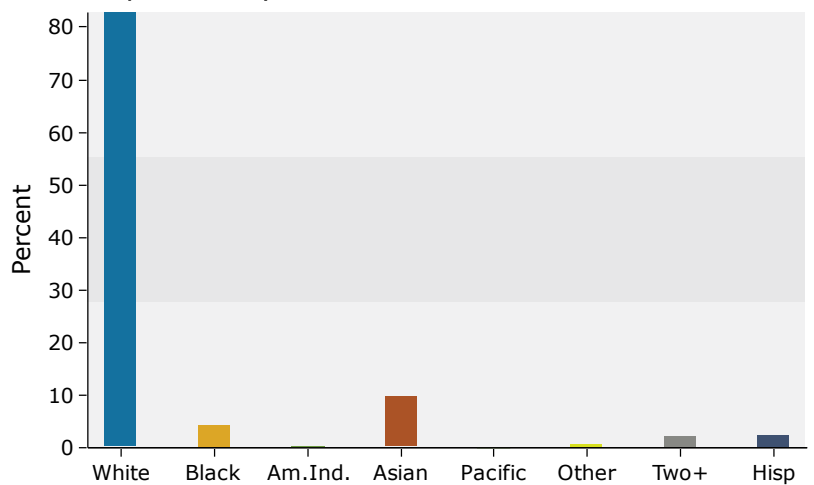
Population by Age



2016 Household Income



2016 Population by Race



Source: U.S. Census Bureau, Census 2010 Summary File 1. Esri forecasts for 2016 and 2021.



Market Profile

3672 Pinto Dr, Medina, Minnesota, 55340
Rings: 1, 3, 5 mile radii

Colliers International
Latitude: 45.04444
Longitude: -93.54244

	1 mile	3 miles	5 miles
Population Summary			
2000 Total Population	1,287	13,411	59,211
2010 Total Population	1,752	19,518	72,868
2016 Total Population	1,808	23,910	82,158
2016 Group Quarters	0	97	697
2021 Total Population	2,028	27,130	89,873
2016-2021 Annual Rate	2.32%	2.56%	1.81%
2016 Total Daytime Population	3,422	19,962	79,190
Workers	2,450	7,697	40,153
Residents	972	12,265	39,037
Household Summary			
2000 Households	424	4,166	20,901
2000 Average Household Size	3.03	3.21	2.78
2010 Households	612	6,691	27,311
2010 Average Household Size	2.86	2.90	2.64
2016 Households	637	8,159	30,530
2016 Average Household Size	2.84	2.92	2.67
2021 Households	714	9,229	33,202
2021 Average Household Size	2.84	2.93	2.69
2016-2021 Annual Rate	2.31%	2.50%	1.69%
2010 Families	481	5,322	19,975
2010 Average Family Size	3.29	3.30	3.13
2016 Families	499	6,464	22,395
2016 Average Family Size	3.26	3.32	3.15
2021 Families	558	7,302	24,406
2021 Average Family Size	3.27	3.33	3.16
2016-2021 Annual Rate	2.26%	2.47%	1.73%
Housing Unit Summary			
2000 Housing Units	424	4,225	21,317
Owner Occupied Housing Units	86.3%	90.0%	82.0%
Renter Occupied Housing Units	13.7%	8.6%	16.1%
Vacant Housing Units	0.0%	1.4%	2.0%
2010 Housing Units	625	6,957	28,604
Owner Occupied Housing Units	87.4%	86.7%	77.3%
Renter Occupied Housing Units	10.6%	9.4%	18.2%
Vacant Housing Units	2.1%	3.8%	4.5%
2016 Housing Units	654	8,310	31,586
Owner Occupied Housing Units	86.4%	87.8%	78.1%
Renter Occupied Housing Units	11.0%	10.3%	18.5%
Vacant Housing Units	2.6%	1.8%	3.3%
2021 Housing Units	733	9,474	34,417
Owner Occupied Housing Units	86.4%	87.1%	78.4%
Renter Occupied Housing Units	11.1%	10.3%	18.1%
Vacant Housing Units	2.6%	2.6%	3.5%
Median Household Income			
2016	\$113,062	\$129,382	\$108,272
2021	\$117,646	\$139,158	\$118,079
Median Home Value			
2016	\$459,150	\$422,727	\$378,110
2021	\$489,597	\$432,406	\$390,623
Per Capita Income			
2016	\$60,103	\$57,409	\$54,464
2021	\$61,230	\$60,752	\$58,474
Median Age			
2010	41.5	39.1	38.2
2016	42.5	40.1	39.1
2021	44.8	40.0	39.6

Data Note: Household population includes persons not residing in group quarters. Average Household Size is the household population divided by total households. Persons in families include the householder and persons related to the householder by birth, marriage, or adoption. Per Capita Income represents the income received by all persons aged 15 years and over divided by the total population.

Source: U.S. Census Bureau, Census 2010 Summary File 1. Esri forecasts for 2016 and 2021 Esri converted Census 2000 data into 2010 geography.



Market Profile

3672 Pinto Dr, Medina, Minnesota, 55340
Rings: 1, 3, 5 mile radii

Colliers International
Latitude: 45.04444
Longitude: -93.54244

	1 mile	3 miles	5 miles
2016 Households by Income			
Household Income Base	637	8,159	30,530
<\$15,000	3.6%	2.8%	3.4%
\$15,000 - \$24,999	3.5%	2.1%	3.4%
\$25,000 - \$34,999	3.5%	3.4%	3.9%
\$35,000 - \$49,999	6.1%	6.0%	7.7%
\$50,000 - \$74,999	14.4%	10.6%	13.4%
\$75,000 - \$99,999	17.0%	12.9%	13.8%
\$100,000 - \$149,999	6.0%	18.2%	19.3%
\$150,000 - \$199,999	11.5%	17.2%	13.6%
\$200,000+	34.4%	26.9%	21.6%
Average Household Income	\$172,991	\$164,363	\$146,257
2021 Households by Income			
Household Income Base	714	9,229	33,202
<\$15,000	3.4%	2.5%	3.2%
\$15,000 - \$24,999	3.1%	1.8%	3.0%
\$25,000 - \$34,999	2.7%	2.6%	3.0%
\$35,000 - \$49,999	5.2%	4.8%	6.7%
\$50,000 - \$74,999	9.7%	8.1%	9.8%
\$75,000 - \$99,999	21.6%	13.6%	14.6%
\$100,000 - \$149,999	10.5%	19.7%	20.9%
\$150,000 - \$199,999	11.8%	19.3%	15.9%
\$200,000+	32.2%	27.6%	22.9%
Average Household Income	\$176,062	\$174,576	\$158,009
2016 Owner Occupied Housing Units by Value			
Total	565	7,298	24,680
<\$50,000	0.0%	1.3%	1.4%
\$50,000 - \$99,999	0.4%	0.5%	1.2%
\$100,000 - \$149,999	2.5%	1.8%	3.2%
\$150,000 - \$199,999	5.3%	5.7%	7.7%
\$200,000 - \$249,999	7.4%	7.3%	10.5%
\$250,000 - \$299,999	7.1%	8.2%	9.7%
\$300,000 - \$399,999	11.3%	21.4%	20.9%
\$400,000 - \$499,999	27.1%	17.3%	16.4%
\$500,000 - \$749,999	7.8%	22.4%	19.2%
\$750,000 - \$999,999	7.1%	7.8%	5.5%
\$1,000,000 +	24.1%	6.4%	4.3%
Average Home Value	\$621,858	\$492,413	\$438,077
2021 Owner Occupied Housing Units by Value			
Total	633	8,253	26,974
<\$50,000	0.0%	0.6%	0.7%
\$50,000 - \$99,999	0.2%	0.3%	0.8%
\$100,000 - \$149,999	0.9%	0.7%	1.5%
\$150,000 - \$199,999	2.1%	2.3%	3.8%
\$200,000 - \$249,999	4.6%	4.9%	8.0%
\$250,000 - \$299,999	7.0%	8.7%	11.0%
\$300,000 - \$399,999	14.1%	27.3%	26.7%
\$400,000 - \$499,999	23.5%	16.1%	15.3%
\$500,000 - \$749,999	6.2%	19.0%	18.5%
\$750,000 - \$999,999	10.6%	12.0%	8.2%
\$1,000,000 +	30.6%	8.1%	5.4%
Average Home Value	\$705,903	\$533,413	\$475,736

Data Note: Income represents the preceding year, expressed in current dollars. Household income includes wage and salary earnings, interest dividends, net rents, pensions, SSI and welfare payments, child support, and alimony.

Source: U.S. Census Bureau, Census 2010 Summary File 1. Esri forecasts for 2016 and 2021 Esri converted Census 2000 data into 2010 geography.



Market Profile

3672 Pinto Dr, Medina, Minnesota, 55340
Rings: 1, 3, 5 mile radii

Colliers International
Latitude: 45.04444
Longitude: -93.54244

	1 mile	3 miles	5 miles
2010 Population by Age			
Total	1,751	19,522	72,865
0 - 4	5.3%	6.1%	6.5%
5 - 9	8.7%	9.1%	8.1%
10 - 14	10.7%	9.7%	8.3%
15 - 24	11.7%	10.8%	10.9%
25 - 34	5.7%	8.6%	11.6%
35 - 44	14.6%	15.9%	15.4%
45 - 54	20.9%	18.5%	17.6%
55 - 64	11.2%	10.8%	11.8%
65 - 74	6.3%	6.0%	5.8%
75 - 84	3.8%	3.1%	2.9%
85 +	1.2%	1.4%	1.0%
18 +	68.6%	69.2%	72.1%
2016 Population by Age			
Total	1,808	23,912	82,159
0 - 4	4.7%	5.7%	6.1%
5 - 9	6.5%	7.2%	7.2%
10 - 14	9.3%	9.4%	8.3%
15 - 24	14.4%	13.0%	12.0%
25 - 34	7.6%	8.8%	11.1%
35 - 44	10.3%	13.2%	13.9%
45 - 54	19.0%	16.9%	15.8%
55 - 64	15.2%	13.3%	13.5%
65 - 74	7.5%	7.4%	7.6%
75 - 84	3.8%	3.5%	3.3%
85 +	1.5%	1.6%	1.2%
18 +	73.9%	72.2%	73.8%
2021 Population by Age			
Total	2,028	27,131	89,874
0 - 4	4.4%	5.8%	6.0%
5 - 9	5.6%	6.9%	6.8%
10 - 14	7.5%	7.7%	7.4%
15 - 24	12.9%	11.9%	11.4%
25 - 34	9.0%	10.8%	11.8%
35 - 44	10.9%	13.7%	14.2%
45 - 54	15.4%	14.4%	14.2%
55 - 64	18.2%	13.8%	13.7%
65 - 74	10.0%	9.1%	9.3%
75 - 84	4.5%	4.4%	4.0%
85 +	1.7%	1.7%	1.4%
18 +	77.4%	74.3%	75.2%
2010 Population by Sex			
Males	871	9,523	35,675
Females	881	9,995	37,193
2016 Population by Sex			
Males	897	11,631	40,265
Females	911	12,279	41,894
2021 Population by Sex			
Males	1,007	13,170	44,035
Females	1,021	13,960	45,838

Source: U.S. Census Bureau, Census 2010 Summary File 1. Esri forecasts for 2016 and 2021 Esri converted Census 2000 data into 2010 geography.



Market Profile

3672 Pinto Dr, Medina, Minnesota, 55340
Rings: 1, 3, 5 mile radii

Colliers International
Latitude: 45.04444
Longitude: -93.54244

	1 mile	3 miles	5 miles
2010 Population by Race/Ethnicity			
Total	1,752	19,519	72,869
White Alone	93.6%	85.6%	85.5%
Black Alone	1.2%	2.4%	3.8%
American Indian Alone	0.1%	0.1%	0.2%
Asian Alone	3.5%	9.3%	7.6%
Pacific Islander Alone	0.1%	0.1%	0.0%
Some Other Race Alone	0.3%	0.6%	0.7%
Two or More Races	1.3%	1.9%	2.0%
Hispanic Origin	1.1%	2.2%	2.3%
Diversity Index	14.2	29.0	29.5
2016 Population by Race/Ethnicity			
Total	1,808	23,910	82,159
White Alone	92.3%	82.4%	82.8%
Black Alone	1.4%	2.9%	4.3%
American Indian Alone	0.1%	0.1%	0.2%
Asian Alone	4.4%	11.7%	9.7%
Pacific Islander Alone	0.1%	0.1%	0.0%
Some Other Race Alone	0.3%	0.7%	0.8%
Two or More Races	1.5%	2.2%	2.3%
Hispanic Origin	1.3%	2.4%	2.5%
Diversity Index	16.7	33.9	33.7
2021 Population by Race/Ethnicity			
Total	2,029	27,130	89,874
White Alone	91.0%	79.8%	80.3%
Black Alone	1.6%	3.2%	4.7%
American Indian Alone	0.0%	0.1%	0.2%
Asian Alone	5.2%	13.7%	11.5%
Pacific Islander Alone	0.0%	0.1%	0.0%
Some Other Race Alone	0.4%	0.8%	0.8%
Two or More Races	1.7%	2.4%	2.5%
Hispanic Origin	1.4%	2.6%	2.8%
Diversity Index	19.2	37.8	37.6
2010 Population by Relationship and Household Type			
Total	1,752	19,518	72,868
In Households	100.0%	99.5%	99.1%
In Family Households	91.0%	90.8%	86.7%
Householder	27.4%	27.8%	27.4%
Spouse	25.0%	24.8%	23.6%
Child	37.0%	36.0%	33.1%
Other relative	0.9%	1.4%	1.6%
Nonrelative	0.7%	0.8%	1.0%
In Nonfamily Households	9.0%	8.7%	12.3%
In Group Quarters	0.0%	0.5%	0.9%
Institutionalized Population	0.0%	0.3%	0.8%
Noninstitutionalized Population	0.0%	0.2%	0.2%

Data Note: Persons of Hispanic Origin may be of any race. The Diversity Index measures the probability that two people from the same area will be from different race/ethnic groups.

Source: U.S. Census Bureau, Census 2010 Summary File 1. Esri forecasts for 2016 and 2021 Esri converted Census 2000 data into 2010 geography.



Market Profile

3672 Pinto Dr, Medina, Minnesota, 55340
Rings: 1, 3, 5 mile radii

Colliers International
Latitude: 45.04444
Longitude: -93.54244

	1 mile	3 miles	5 miles
2016 Population 25+ by Educational Attainment			
Total	1,175	15,478	54,567
Less than 9th Grade	0.8%	0.4%	0.6%
9th - 12th Grade, No Diploma	0.6%	1.2%	1.8%
High School Graduate	13.5%	9.9%	10.8%
GED/Alternative Credential	0.3%	0.3%	1.2%
Some College, No Degree	15.5%	14.2%	15.6%
Associate Degree	9.1%	7.8%	8.4%
Bachelor's Degree	43.8%	40.3%	38.0%
Graduate/Professional Degree	16.4%	25.9%	23.6%
2016 Population 15+ by Marital Status			
Total	1,437	18,575	64,440
Never Married	24.2%	23.3%	25.0%
Married	66.3%	68.2%	63.7%
Widowed	4.7%	3.0%	3.4%
Divorced	4.8%	5.5%	7.9%
2016 Civilian Population 16+ in Labor Force			
Civilian Employed	96.0%	96.3%	96.6%
Civilian Unemployed	4.0%	3.7%	3.4%
2016 Employed Population 16+ by Industry			
Total	850	11,872	43,637
Agriculture/Mining	0.6%	1.0%	0.8%
Construction	5.6%	4.0%	4.0%
Manufacturing	16.2%	15.7%	15.6%
Wholesale Trade	7.5%	4.6%	4.3%
Retail Trade	9.6%	10.6%	9.9%
Transportation/Utilities	3.8%	2.8%	2.8%
Information	1.1%	1.0%	1.6%
Finance/Insurance/Real Estate	17.3%	14.7%	13.3%
Services	34.9%	43.5%	46.3%
Public Administration	3.3%	2.1%	1.4%
2016 Employed Population 16+ by Occupation			
Total	849	11,872	43,637
White Collar	82.0%	85.8%	82.4%
Management/Business/Financial	28.4%	29.6%	30.1%
Professional	22.5%	29.7%	28.7%
Sales	17.6%	15.6%	13.1%
Administrative Support	13.5%	10.9%	10.5%
Services	6.4%	5.7%	9.2%
Blue Collar	11.5%	8.4%	8.4%
Farming/Forestry/Fishing	0.0%	0.0%	0.1%
Construction/Extraction	3.1%	2.6%	2.4%
Installation/Maintenance/Repair	0.7%	0.6%	1.2%
Production	1.9%	1.9%	2.8%
Transportation/Material Moving	5.9%	3.3%	2.0%
2010 Population By Urban/ Rural Status			
Total Population	1,752	19,518	72,868
Population Inside Urbanized Area	43.4%	83.2%	90.7%
Population Inside Urbanized Cluster	0.0%	0.0%	0.0%
Rural Population	56.6%	16.8%	9.3%

Source: U.S. Census Bureau, Census 2010 Summary File 1. Esri forecasts for 2016 and 2021 Esri converted Census 2000 data into 2010 geography.



Market Profile

3672 Pinto Dr, Medina, Minnesota, 55340
Rings: 1, 3, 5 mile radii

Colliers International
Latitude: 45.04444
Longitude: -93.54244

	1 mile	3 miles	5 miles
2010 Households by Type			
Total	611	6,690	27,310
Households with 1 Person	18.0%	16.8%	21.7%
Households with 2+ People	82.0%	83.2%	78.3%
Family Households	78.7%	79.6%	73.1%
Husband-wife Families	71.8%	70.8%	62.9%
With Related Children	40.3%	38.8%	32.4%
Other Family (No Spouse Present)	6.9%	8.8%	10.2%
Other Family with Male Householder	1.6%	2.4%	2.8%
With Related Children	0.8%	1.6%	1.7%
Other Family with Female Householder	5.2%	6.4%	7.4%
With Related Children	2.9%	4.2%	4.9%
Nonfamily Households	3.3%	3.6%	5.2%
All Households with Children	44.3%	44.8%	39.2%
Multigenerational Households	1.3%	1.8%	1.6%
Unmarried Partner Households	2.8%	3.3%	4.5%
Male-female	2.5%	2.9%	4.0%
Same-sex	0.3%	0.4%	0.5%
2010 Households by Size			
Total	611	6,690	27,312
1 Person Household	18.0%	16.8%	21.7%
2 Person Household	31.4%	32.8%	33.8%
3 Person Household	17.0%	17.1%	16.6%
4 Person Household	18.8%	21.0%	18.0%
5 Person Household	11.0%	9.0%	7.2%
6 Person Household	2.8%	2.3%	1.9%
7 + Person Household	1.0%	0.9%	0.7%
2010 Households by Tenure and Mortgage Status			
Total	612	6,691	27,311
Owner Occupied	89.2%	90.2%	81.0%
Owned with a Mortgage/Loan	69.1%	74.2%	66.7%
Owned Free and Clear	20.1%	16.0%	14.3%
Renter Occupied	10.8%	9.8%	19.0%
2010 Housing Units By Urban/ Rural Status			
Total Housing Units	625	6,957	28,604
Housing Units Inside Urbanized Area	39.5%	82.4%	91.0%
Housing Units Inside Urbanized Cluster	0.0%	0.0%	0.0%
Rural Housing Units	60.5%	17.6%	9.0%

Data Note: Households with children include any households with people under age 18, related or not. Multigenerational households are families with 3 or more parent-child relationships. Unmarried partner households are usually classified as nonfamily households unless there is another member of the household related to the householder. Multigenerational and unmarried partner households are reported only to the tract level. Esri estimated block group data, which is used to estimate polygons or non-standard geography.

Source: U.S. Census Bureau, Census 2010 Summary File 1. Esri forecasts for 2016 and 2021 Esri converted Census 2000 data into 2010 geography.



Market Profile

3672 Pinto Dr, Medina, Minnesota, 55340
Rings: 1, 3, 5 mile radii

Colliers International
Latitude: 45.04444
Longitude: -93.54244

	1 mile	3 miles	5 miles
Top 3 Tapestry Segments			
1.	Professional Pride (1B)	Boomburbs (1C)	Boomburbs (1C)
2.	Savvy Suburbanites (1D)	Professional Pride (1B)	Professional Pride (1B)
3.	Top Tier (1A)	Savvy Suburbanites (1D)	Savvy Suburbanites (1D)
2016 Consumer Spending			
Apparel & Services: Total \$	\$2,758,489	\$33,909,383	\$114,837,693
Average Spent	\$4,330.44	\$4,156.07	\$3,761.47
Spending Potential Index	215	206	187
Education: Total \$	\$2,350,627	\$25,937,950	\$87,115,527
Average Spent	\$3,690.15	\$3,179.06	\$2,853.44
Spending Potential Index	261	225	202
Entertainment/Recreation: Total \$	\$4,028,060	\$49,797,995	\$165,758,207
Average Spent	\$6,323.49	\$6,103.44	\$5,429.35
Spending Potential Index	217	209	186
Food at Home: Total \$	\$6,228,985	\$77,704,471	\$266,372,569
Average Spent	\$9,778.63	\$9,523.77	\$8,724.94
Spending Potential Index	196	191	175
Food Away from Home: Total \$	\$4,169,619	\$51,723,347	\$175,451,433
Average Spent	\$6,545.71	\$6,339.42	\$5,746.85
Spending Potential Index	212	205	186
Health Care: Total \$	\$7,030,615	\$86,326,321	\$287,084,518
Average Spent	\$11,037.07	\$10,580.50	\$9,403.36
Spending Potential Index	208	200	177
HH Furnishings & Equipment: Total \$	\$2,490,183	\$30,654,097	\$102,046,671
Average Spent	\$3,909.24	\$3,757.09	\$3,342.50
Spending Potential Index	221	213	189
Personal Care Products & Services: Total \$	\$1,009,498	\$12,498,511	\$41,911,462
Average Spent	\$1,584.77	\$1,531.87	\$1,372.80
Spending Potential Index	216	209	187
Shelter: Total \$	\$21,282,310	\$263,625,785	\$893,502,388
Average Spent	\$33,410.22	\$32,311.04	\$29,266.37
Spending Potential Index	215	207	188
Support Payments/Cash Contributions/Gifts in Kind: Total \$	\$3,289,872	\$40,118,937	\$132,157,190
Average Spent	\$5,164.63	\$4,917.14	\$4,328.76
Spending Potential Index	223	212	187
Travel: Total \$	\$2,939,563	\$35,360,094	\$114,834,739
Average Spent	\$4,614.70	\$4,333.88	\$3,761.37
Spending Potential Index	248	233	202
Vehicle Maintenance & Repairs: Total \$	\$1,379,140	\$16,989,619	\$57,177,811
Average Spent	\$2,165.05	\$2,082.32	\$1,872.84
Spending Potential Index	209	201	181

Data Note: Consumer spending shows the amount spent on a variety of goods and services by households that reside in the area. Expenditures are shown by broad budget categories that are not mutually exclusive. Consumer spending does not equal business revenue. Total and Average Amount Spent Per Household represent annual figures. The Spending Potential Index represents the amount spent in the area relative to a national average of 100.

Source: Consumer Spending data are derived from the 2013 and 2014 Consumer Expenditure Surveys, Bureau of Labor Statistics. Esri.

Source: U.S. Census Bureau, Census 2010 Summary File 1. Esri forecasts for 2016 and 2021 Esri converted Census 2000 data into 2010 geography.