

The Colliers logo consists of the word "Colliers" in a white serif font, centered within a dark blue rounded rectangle. Below the text are three horizontal stripes in yellow, red, and blue from top to bottom.

220 Baltimore Pike | Springfield, PA

Retail shop opportunity on highly visible Baltimore Pike **for lease**

Introducing 220 Baltimore Pike, a rare freestanding opportunity located on one of the strongest retail corridors in Philadelphia MSA. Site is located amongst a variety of shops, restaurants, grocery stores, and shopping centers.

Michael Barmash

Senior Managing Director
+1 215 928 7519
michael.barmash@colliers.com

Andrew Weinstein

Associate
+1 215 928 7557
andrew.weinstein@colliers.com

Property Overview

Address 220 Baltimore Pike, Springfield, PA 19064

Location Located on "The Golden Mile" in Springfield Township, Delaware County

Zoning E - Business

Site Area 14,584 SF

Building Area 3,600 SF

Parking 12 spaces

Floors 1

Frontage 140' on Baltimore Pike (with 1 curb cuts)

Year Built 1960

Parcel ID 42-00-04039-01

Taxes (2025) \$12,003

Assessment \$400,500

Street	Count	Type	Year	Distance
Baltimore Pike	27,010	AADT	2017	.02
S Bishop Ave	15,601	AADT	2016	.41
E Springfield Rd	14,774	AADT	2019	.52
Providence Rd	16,708	AADT	2019	.68

Key Highlights



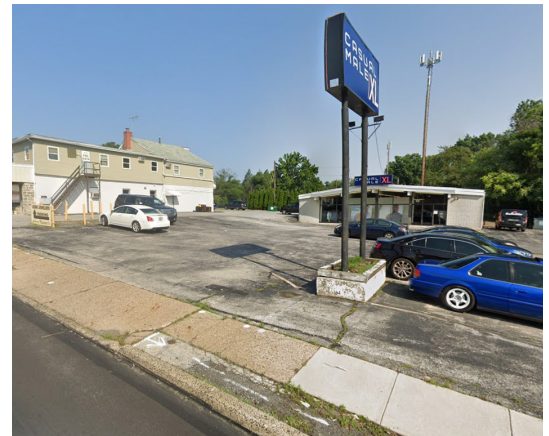
Tremendous visibility; located on strong retail corridor



Close to major highways I-476, Rt. 1, & I-95



Neighbors include Home Depot, Acme, Wawa, Target, and more



Surrounding Area

Demographic	1 Mile	2 Miles	3 Miles
Population	20,031	84,457	173,580
Households	7,552	33,233	67,129
Avg. HHI	\$118,736	\$113,278	\$113,825
Employees	5,806	22,826	48,671





220 Baltimore Pike | Springfield, PA

Michael Barmash

Senior Managing Director
+1 215 928 7519
michael.barmash@colliers.com

Andrew Weinstein

Associate
+1 215 928 7557
andrew.weinstein@colliers.com

This document has been prepared by Colliers for advertising and general information only. Colliers makes no guarantees, representations or warranties of any kind, expressed or implied, regarding the information including, but not limited to, warranties of content, accuracy and reliability. Any interested party should undertake their own inquiries as to the accuracy of the information. Colliers excludes unequivocally all inferred or implied terms, conditions and warranties arising out of this document and excludes all liability for loss and damages arising there from. This publication is the copyrighted property of Colliers and/or its licensor(s). Copyright © 2024. All rights reserved. This communication is not intended to cause or induce breach of an existing listing agreement. Colliers Philadelphia Tri-State Region.