

FOR LEASE > INDUSTRIAL

WAREHOUSE AVAILABLE

25300 NORTHLINE ROAD | TAYLOR, MI



EXCEPTIONAL FACILITY WITH 5 TRUCKWELLS

> PROPERTY HIGHLIGHTS

- 42,000 SF with 2,500 SF of Office Space
- Main Road Frontage
- 5 Truckwells and 5 Grade Level Doors
- 3.5 Acres of Land Suitable for Trailer Staging or Outdoor Storage
- Close to Major Freeways and Detroit Metropolitan Airport

COLLIERS INTERNATIONAL
2 Corporate Drive | Suite 300
Southfield, Michigan 48076

For More Information Call:

JIM ROBERTS

PHONE 248 540 1000 EXT 1814

EMAIL j.roberts@colliers.com

colliers.com/detroit



25300 NORTHLINE ROAD

TAYLOR, MICHIGAN

> BUILDING SPECS

Gross Square Feet:	42,000
Office Square Feet:	2,500
Warehouse Square Feet:	39,500
Year Built:	1986
A/C:	Office HVAC
Construction:	Masonry
Floors:	2
Exterior Type:	Brick
Ceiling Height:	16'
Doors:	5 Grade Level
Docks:	5 Truckwells
Bay Size:	12'w x 14'h
Lighting Type:	Metal Halide
Power:	240v, 3p
Heating:	Gas Fired
Parking:	Ample



> FINANCIALS

Lease Rate: \$ 6.00 plus Utilities

> HIGHLIGHTS

- Main Road Frontage
- Features 5 Truckwells and 5 Grade Level Doors
- 3.5 Acres of Property, Suitable for Trailer Staging or Outdoor Storage
- Close to Area Freeways and Detroit Metropolitan Airport

JIM ROBERTS
 PHONE 248 540 1000 EXT 1814
 EMAIL j.roberts@colliers.com



COLLIERS INTERNATIONAL
 2 Corporate Dr. | Suite 300
 Southfield, Michigan 48076

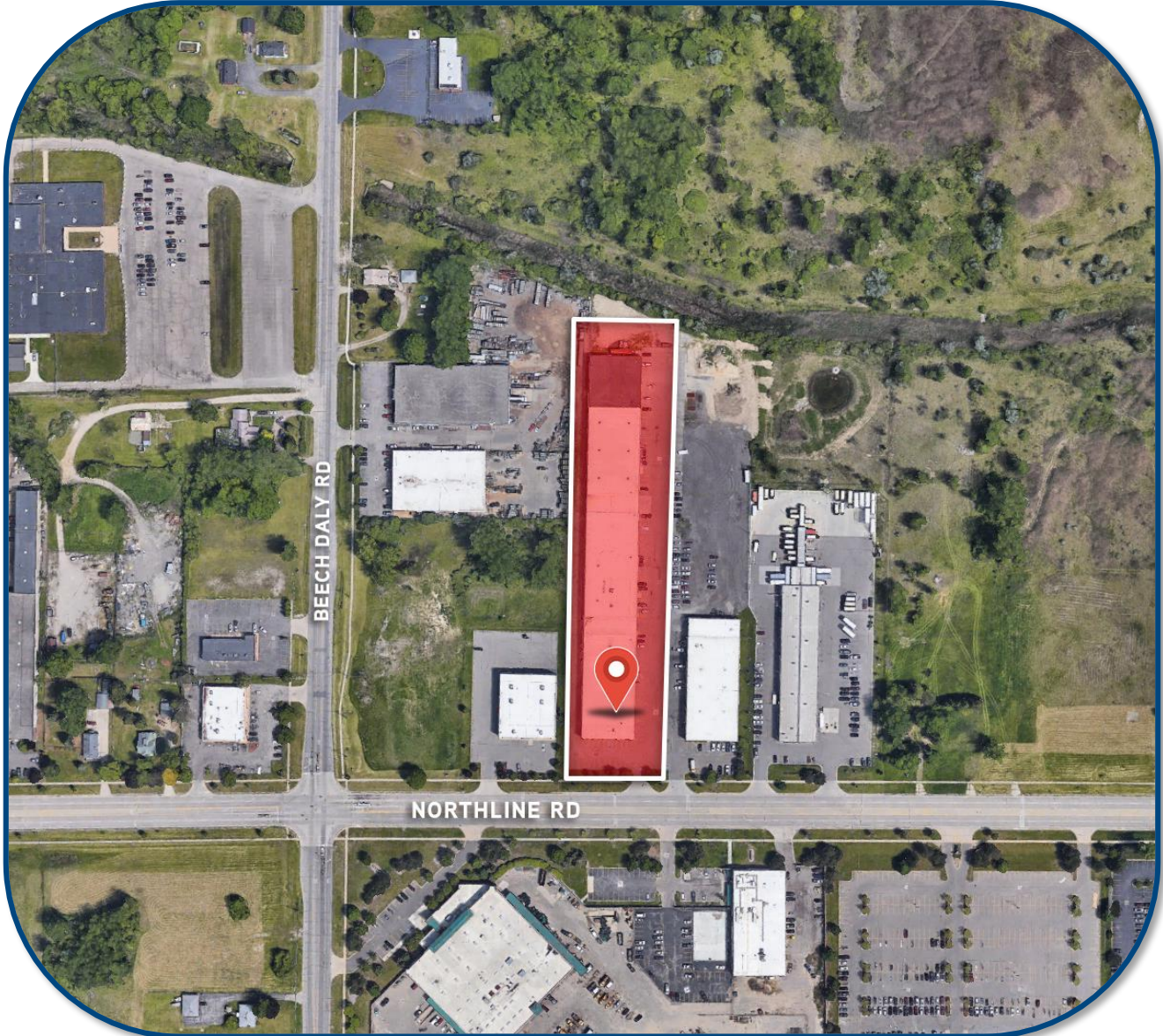
FOR LEASE > INDUSTRIAL

WAREHOUSE AVAILABLE

25300 NORTHLINE ROAD | TAYLOR, MI



> AERIAL MAP



JIM ROBERTS
PHONE 248 540 1000 EXT 1814
EMAIL j.roberts@colliers.com



COLLIERS INTERNATIONAL
2 Corporate Dr. | Suite 300
Southfield, Michigan 48076

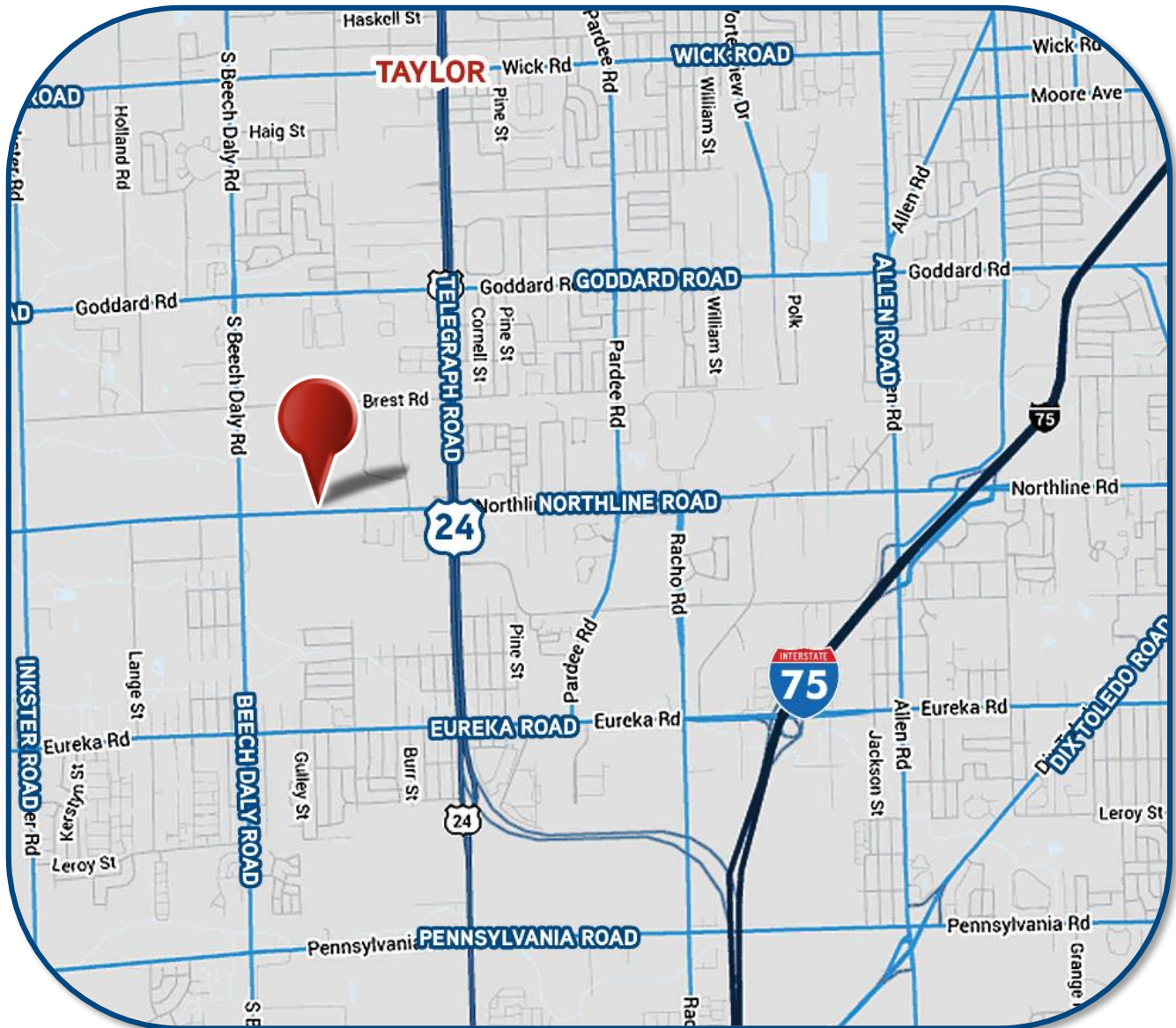
FOR LEASE > INDUSTRIAL

WAREHOUSE AVAILABLE

25300 NORTHLINE ROAD | TAYLOR, MI



> LOCATION MAP



JIM ROBERTS

PHONE 248 540 1000 EXT 1814

EMAIL j.roberts@colliers.com



COLLIERS INTERNATIONAL

2 Corporate Dr. | Suite 300
Southfield, Michigan 48076