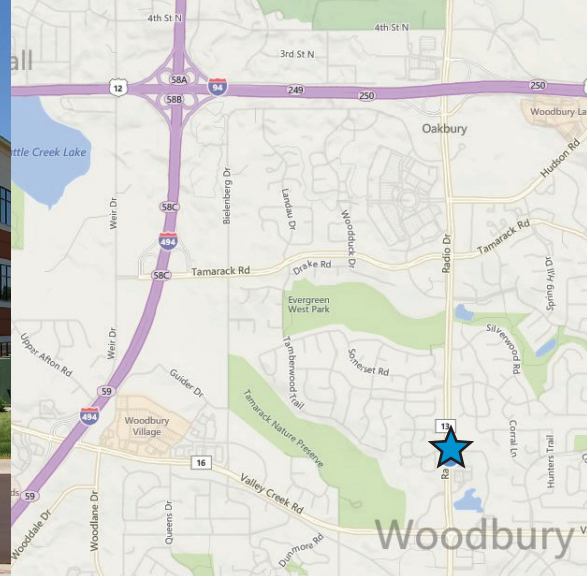


FOR LEASE > OFFICE/MEDICAL SPACE



# City Centre Professional Building

1625 RADIO DRIVE, WOODBURY, MN 55125



## Building Amenities

- > Attractive, three-story, 52,033 square foot building suited for professional office and medical users
- > State-of-the-art building systems, which provide a superior tenant experience
- > Great visibility on Radio Drive
- > Area amenities include many shops and restaurants
- > One of the newer Class A office buildings in Woodbury
- > Building conference room
- > On building signage possible



View our property  
information on  
your smartphone.

Developed and Managed by



[www.mspcommercial.net](http://www.mspcommercial.net)

**COLLIERS INTERNATIONAL**  
900 2nd Avenue South, Suite 1575  
Minneapolis, MN 55402

[www.colliers.com](http://www.colliers.com)

LOUIS SUAREZ ccim  
952 837 3061  
[louis.suarez@colliers.com](mailto:louis.suarez@colliers.com)

BRIAN BRUGGEMAN ccim  
952 837 3079  
[brian.briggeman@colliers.com](mailto:brian.briggeman@colliers.com)

## PROPERTY FACT SHEET



# City Centre Professional Bldg

### PROPERTY ADDRESS:

1625 Radio Drive  
Woodbury, MN 55125

### BUILDING SQUARE FEET:

52,033 square feet

### CURRENTLY AVAILABLE:

3,221 square feet

### ACCESSIBILITY:

Direct access from Radio Drive

### NET RENTAL RATES:

\$20.00 per RSF Net

### 2018 EST. CAM & REAL ESTATE TAX:

\$ 8.28 per square foot CAM

\$ 6.04 per square foot Tax

\$ 14.32 total per square foot

### AMENITIES:

- Great visibility and access on Radio Drive
- Close to many area amenities including shops, restaurants and schools
- Newer Class A office building in Woodbury
- On building signage possible
- Building Conference Room
- Developed and managed by MSP Commercial



## For Leasing Information, Contact:

LOUIS SUAREZ CCIM  
952 837 3061  
[louis.suarez@colliers.com](mailto:louis.suarez@colliers.com)

BRIAN BRUGGEMAN CCIM  
952 837 3079  
[brian.briggeman@colliers.com](mailto:brian.briggeman@colliers.com)

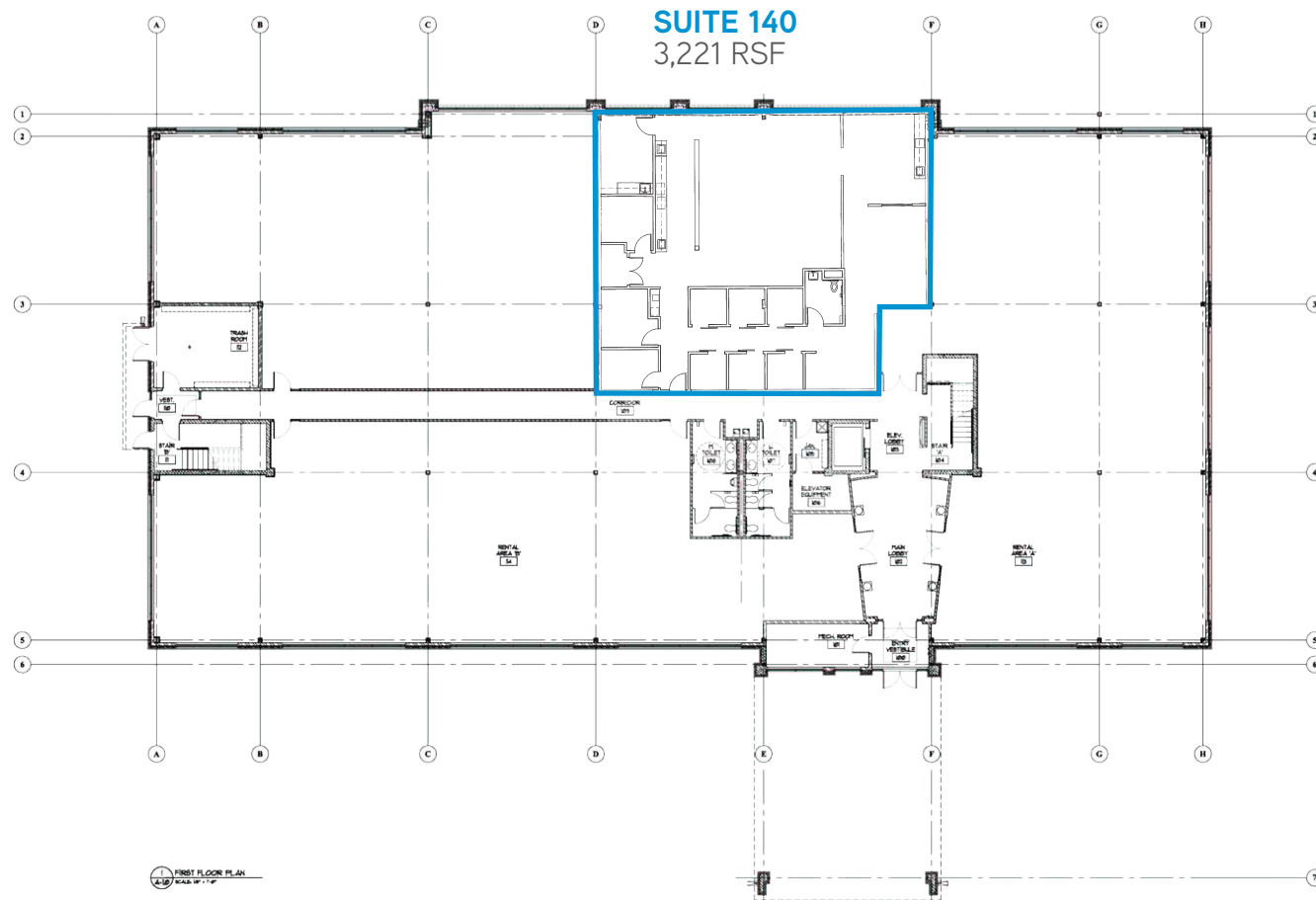
COLLIERS INTERNATIONAL  
900 2nd Avenue South, Suite 1575  
Minneapolis, MN 55402  
[www.colliers.com/msp](http://www.colliers.com/msp)

# City Centre Professional Building

1625 RADIO DRIVE, WOODBURY, MN 55125



## FIRST FLOOR



LOUIS SUAREZ CCIM  
952 837 3061  
[louis.suarez@colliers.com](mailto:louis.suarez@colliers.com)

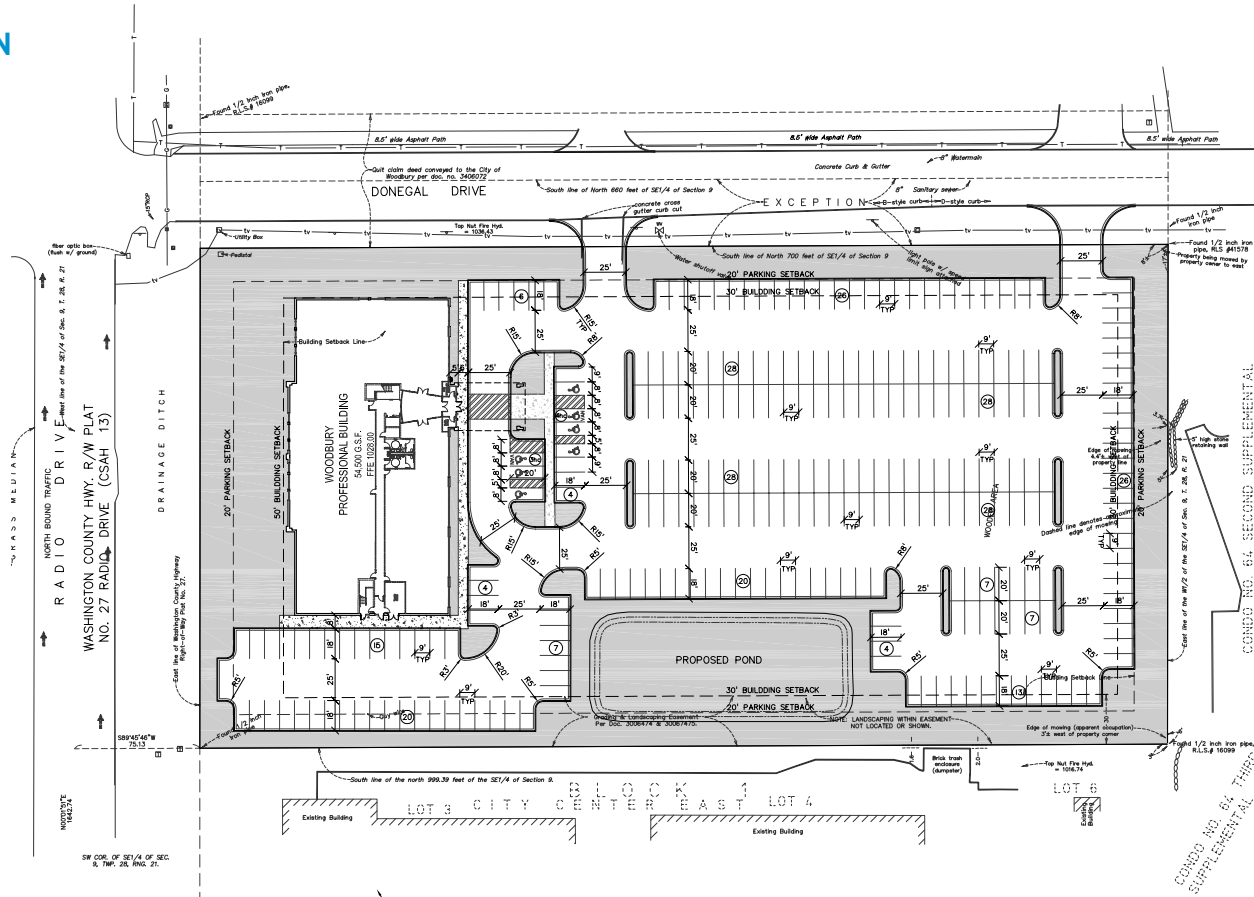
BRIAN BRUGGEMAN CCIM  
952 837 3079  
[brian.briggeman@colliers.com](mailto:brian.briggeman@colliers.com)

# City Centre Professional Building

1625 RADIO DRIVE, WOODBURY, MN 55125



## SITE PLAN



LOUIS SUAREZ ccim  
952 837 3061  
[louis.suarez@colliers.com](mailto:louis.suarez@colliers.com)

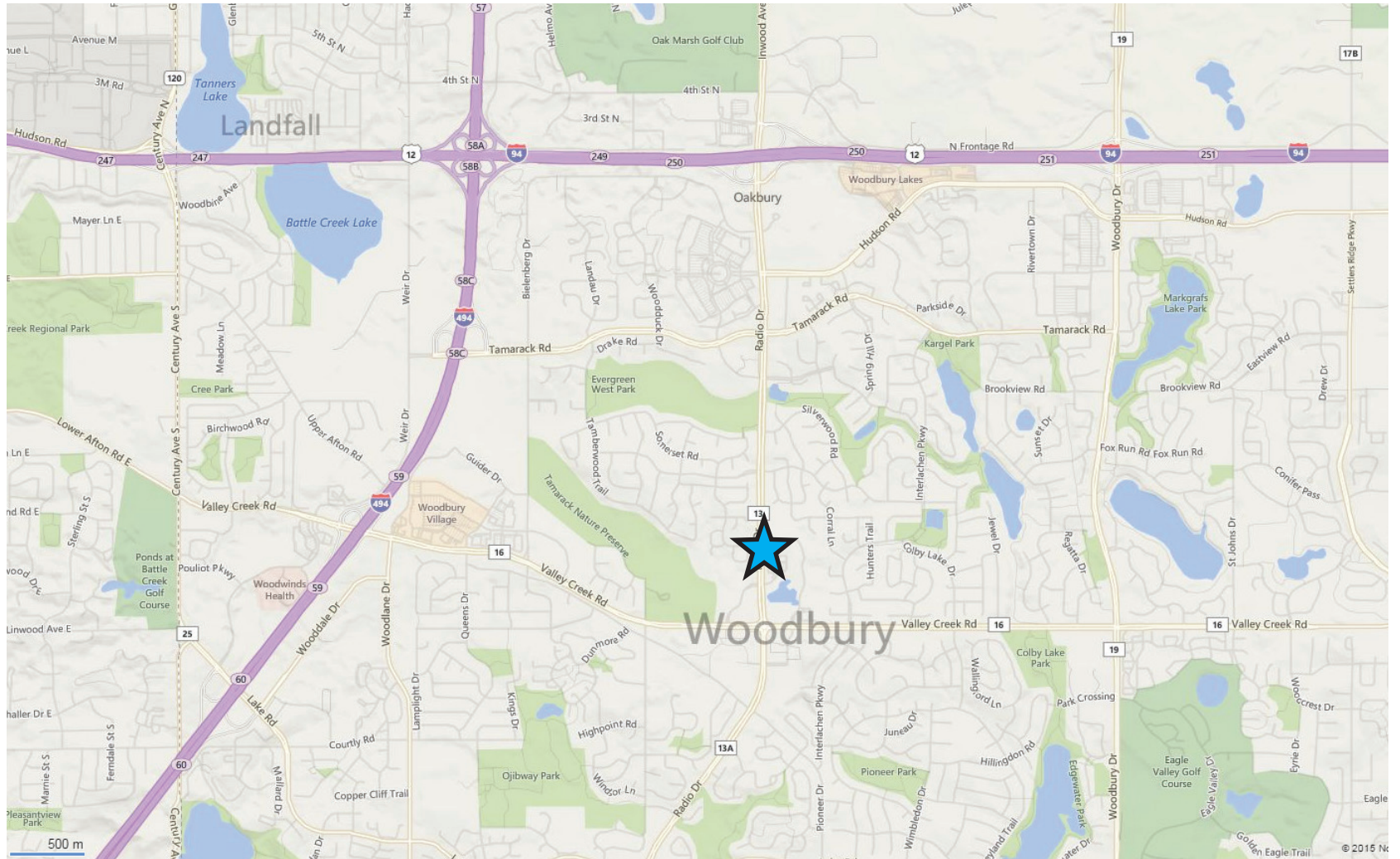
BRIAN BRUGGEMAN ccim  
952 837 3079  
[brian.briggeman@colliers.com](mailto:brian.briggeman@colliers.com)

# City Centre Professional Building

1625 RADIO DRIVE, WOODBURY, MN 55125



## AREA MAP

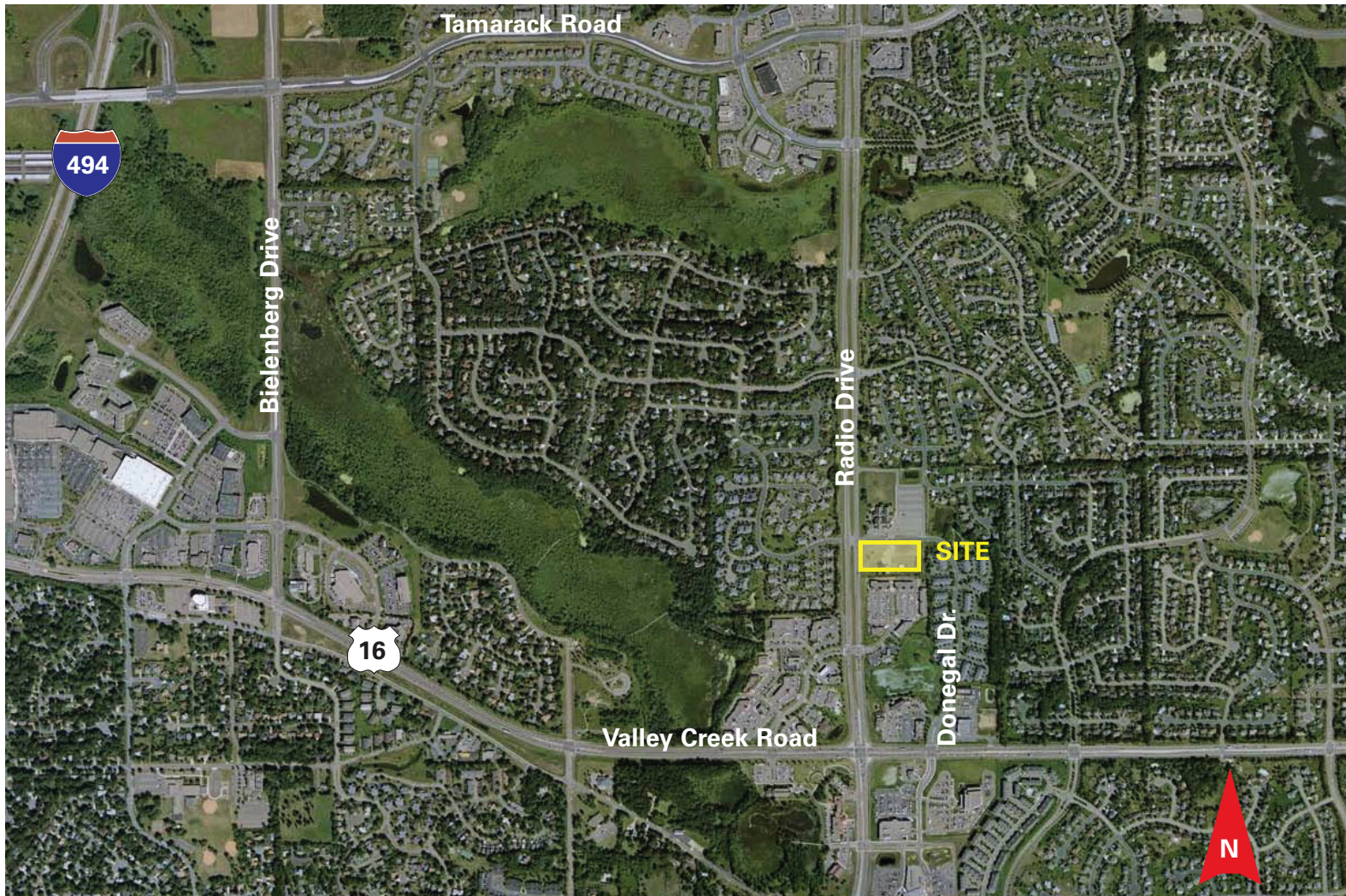


LOUIS SUAREZ ccim  
952 837 3061  
[louis.suarez@colliers.com](mailto:louis.suarez@colliers.com)

BRIAN BRUGGEMAN ccim  
952 837 3079  
[brian.bruggeman@colliers.com](mailto:brian.bruggeman@colliers.com)

# City Centre Professional Building > Aerial

1625 RADIO DRIVE, WOODBURY, MN 55125



LOUIS SUAREZ ccim  
952 837 3061  
[louis.suarez@colliers.com](mailto:louis.suarez@colliers.com)

BRIAN BRUGGEMAN ccim  
952 837 3079  
[brian.bruggeman@colliers.com](mailto:brian.bruggeman@colliers.com)