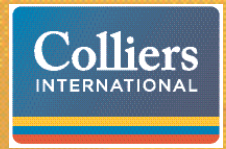
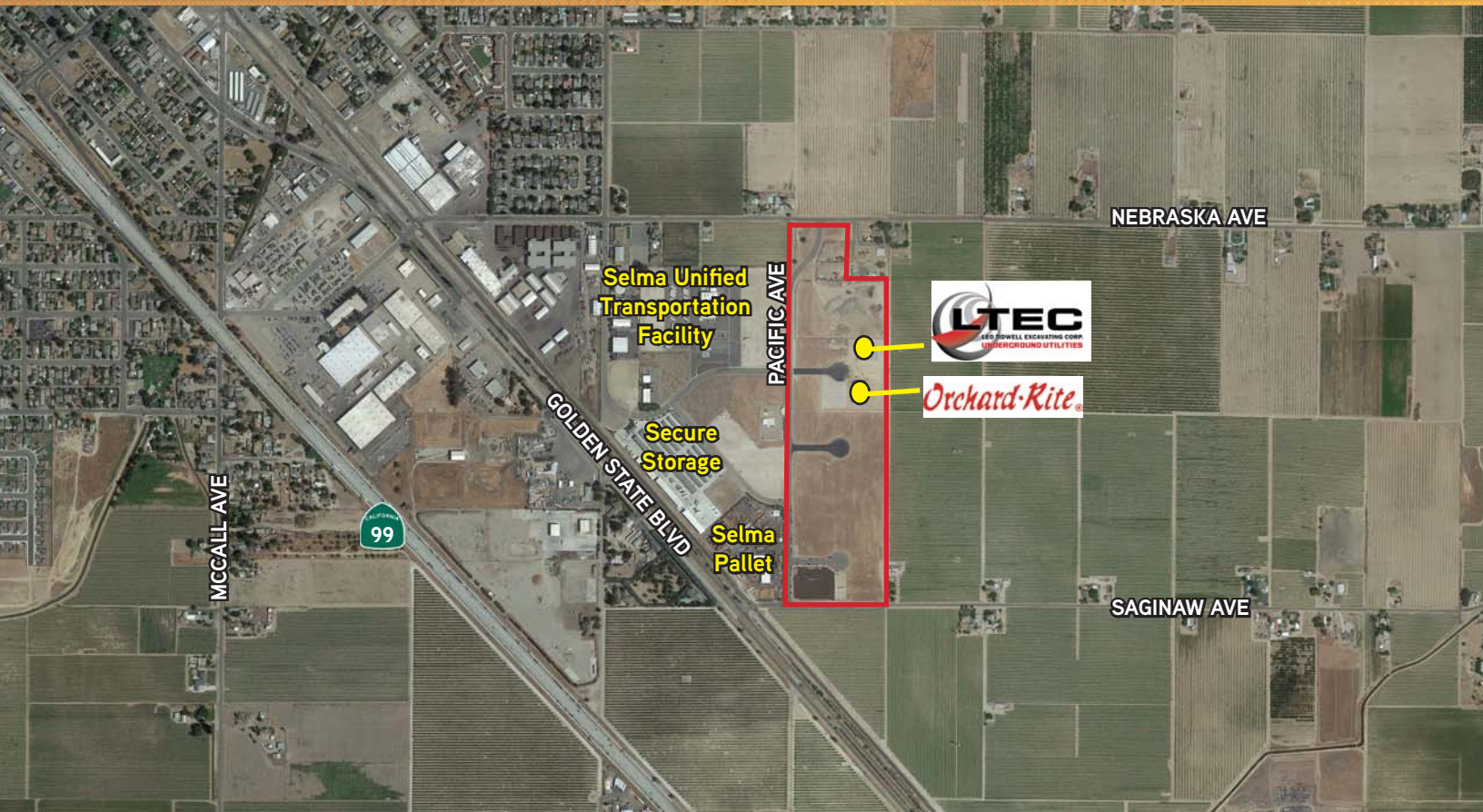


FOR SALE OR LEASE > FULLY IMPROVED SHOVEL READY INDUSTRIAL LOTS



# Selma Industrial Park II

SEC NEBRASKA AND PACIFIC AVENUES, SELMA, CALIFORNIA



**Lot Sizes Range from .5 Acre to 5.95 Acres**  
**Developer/Builder will Build-To-Suit to Purchase or Lease**

## Property Summary

- > Prices Start at \$4.25 PSF
- > Located in the City of Selma
- > Conveniently located between Fresno and Visalia
- > Lots have City Water and Sewer
- > Gas and Electrical Power provided by P.G.&E.
- > Lots are Shovel Ready
- > Site is designated for various tax credits depending on business type and employee count

AGENT: CHAD MCCARDELL  
559 221 1271 | EXT. 121  
chad.mccardell@colliers.com  
BRE #01313658

COLLIERS INTERNATIONAL  
7485 N. Palm Avenue, #110  
Fresno, CA 93711  
www.colliers.com/fresno



FOR SALE OR LEASE > FULLY IMPROVED INDUSTRIAL LOTS

# Selma Industrial Park II

SELMA, CALIFORNIA

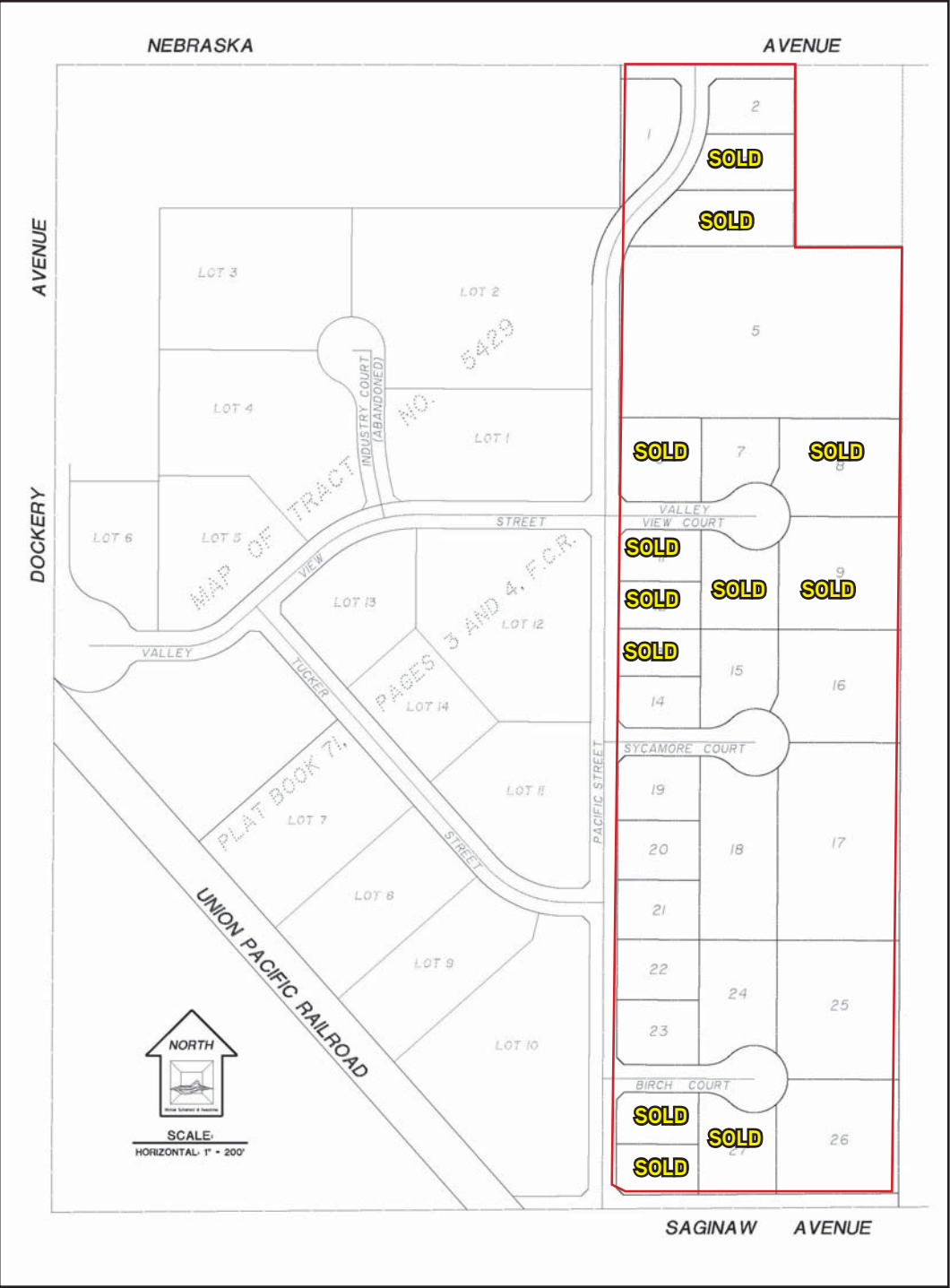
## *Property Photo*



This document has been prepared by Colliers International for advertising and general information only. Colliers International makes no guarantees, representations or warranties of any kind, expressed or implied, regarding the information including, but not limited to, warranties of content, accuracy and reliability. Any interested party should undertake their own inquiries as to the accuracy of the information. Colliers International excludes unequivocally all inferred or implied terms, conditions and warranties arising out of this document and excludes all liability for loss and damages arising there from. This publication is the copyrighted property of Colliers International and/or its licensor(s). ©2018. All rights reserved.

# Selma Industrial Park II

SELMA, CALIFORNIA



Lot	Sq. Ft.	Acres
1	30,738	0.706
2	25,375	0.583
3 - SOLD	30,056	0.690
4 - SOLD	43,397	0.996
5	256,265	5.952
6 - SOLD	36,960	0.848
7	30,071	0.690
8 - SOLD	63,764	1.464
9 - SOLD	73,029	1.677
10 - SOLD	36,788	0.845
11 - SOLD	22,656	0.520
12 - SOLD	20,900	0.480
13 - SOLD	20,900	0.480
14	22,640	0.520
15	36,256	0.832
16	73,444	1.686
17	128,591	2.952
18	72,103	1.655
19	28,372	0.651
20	26,236	0.602
21	26,224	0.602
22	26,600	0.611
23	28,355	0.651
24	47,588	1.092
25	90,099	2.068
26	73,907	1.697
27 - SOLD	37,707	0.866
28 - SOLD	22,655	0.520
29 - SOLD	22,089	0.507