



## Office For Lease

# 6,656 RSF

## 5th Floor Suite 520

### Contact:

**Jared Booth, SIOR, CCIM**  
Executive Vice President  
+1 801 573 5959  
jared.booth@colliers.com

**Andrew Whitworth**  
Senior Associate  
+1 801 580 3895  
andrew.whitworth@colliers.com

**Gwen Knight**  
Executive Vice President  
+1 314 422 0467  
gwen.knight@colliers.com

**Russ Booth, CCIM, CRE**  
Senior Vice President

---

**Colliers**  
6440 S. Millrock Dr., Suite 500  
Salt Lake City, UT 84121  
Main: +1 801 947 8300  
colliers.com

## 230 W. Towne Ridge Pkwy Sandy, UT 84070

### Property Highlights

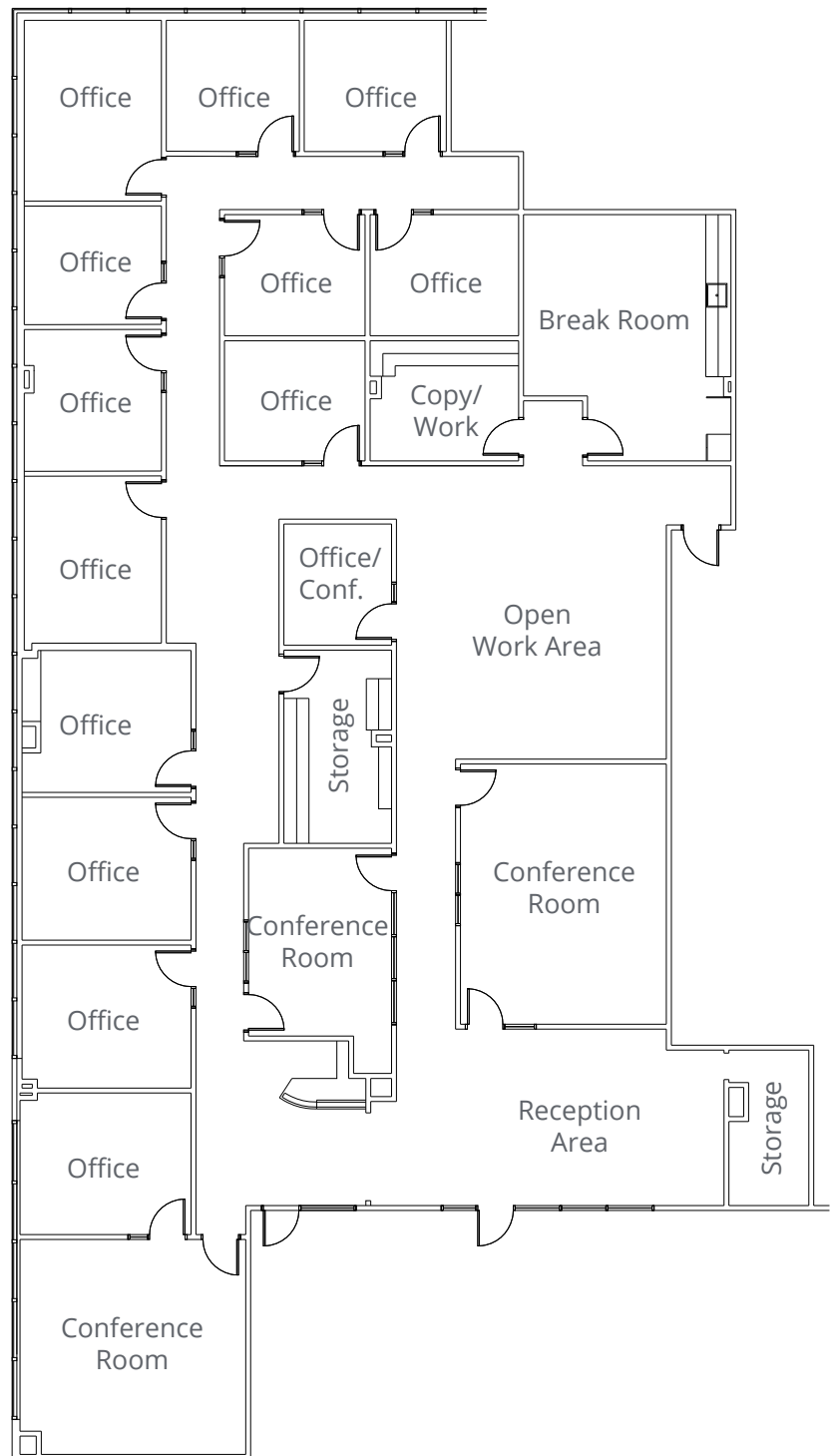
- Top-floor suite with expansive west and north views
- Extensive private office build-out with windowed offices and abundant natural light
- Close proximity to light rail station
- Within one mile of the Mountain America Exposition Center, Rio Tinto Stadium, and the South Towne retail area
- Central Valley location with convenient access to I-15
- Some covered parking included, 4.32 stalls per 1,000 parking ratio
- \$26.00 per square foot, full service gross

# Floorplan

## 5th Floor

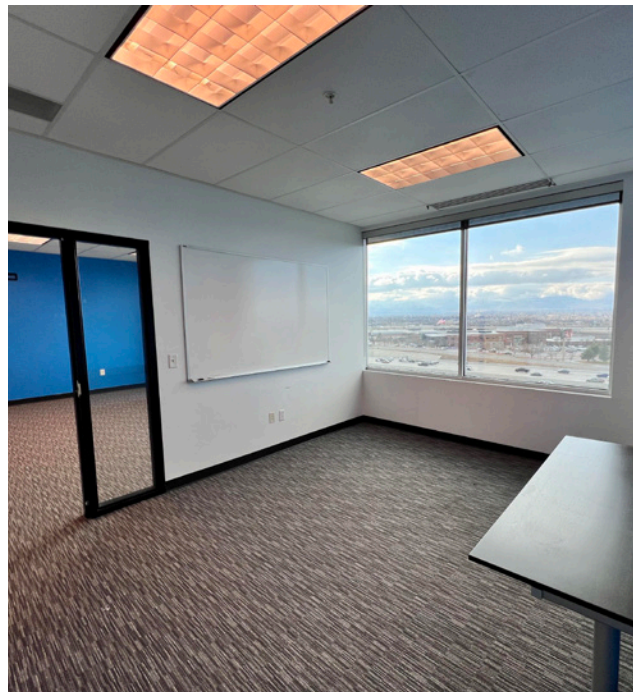
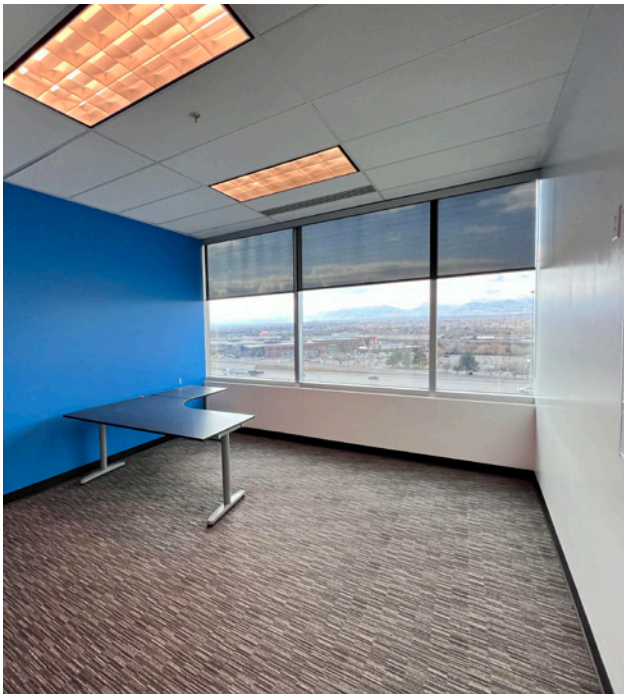
6,656 RSF  
Suite 520

- 13 Private Offices
- 4 Large Conference Rooms
- 3 Storage Rooms
- Break Room
- Reception Area



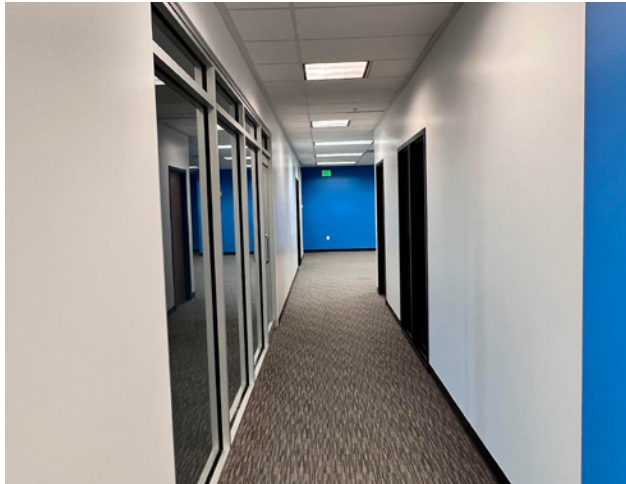


# Suite Images





# Suite Images







# Sandy, Utah

The city of Sandy is located south of Salt Lake City in Salt Lake County, just north of the “Point of the Mountain” that connects Salt Lake and Utah counties. Sandy is a thriving hub with many office and retail centers, parks and open spaces. It is home to the Mountain America Expo Center, America First Field (home of MLS Real Salt Lake), Hale Centre Theatre, and the Sandy Amphitheater. It provides modern living with easy access to the Wasatch Mountains, just minutes away from countless outdoor recreation areas including skiing at a number of world-class ski resorts, some which will host events during the 2034 Olympic Games.

## Demographics



### 2024 Population

1 Mile	9,522
3 Miles	122,246
5 Miles	324,287



### Daytime Population

1 Mile	25,488
3 Miles	138,854
5 Miles	330,322



### Median Household Income

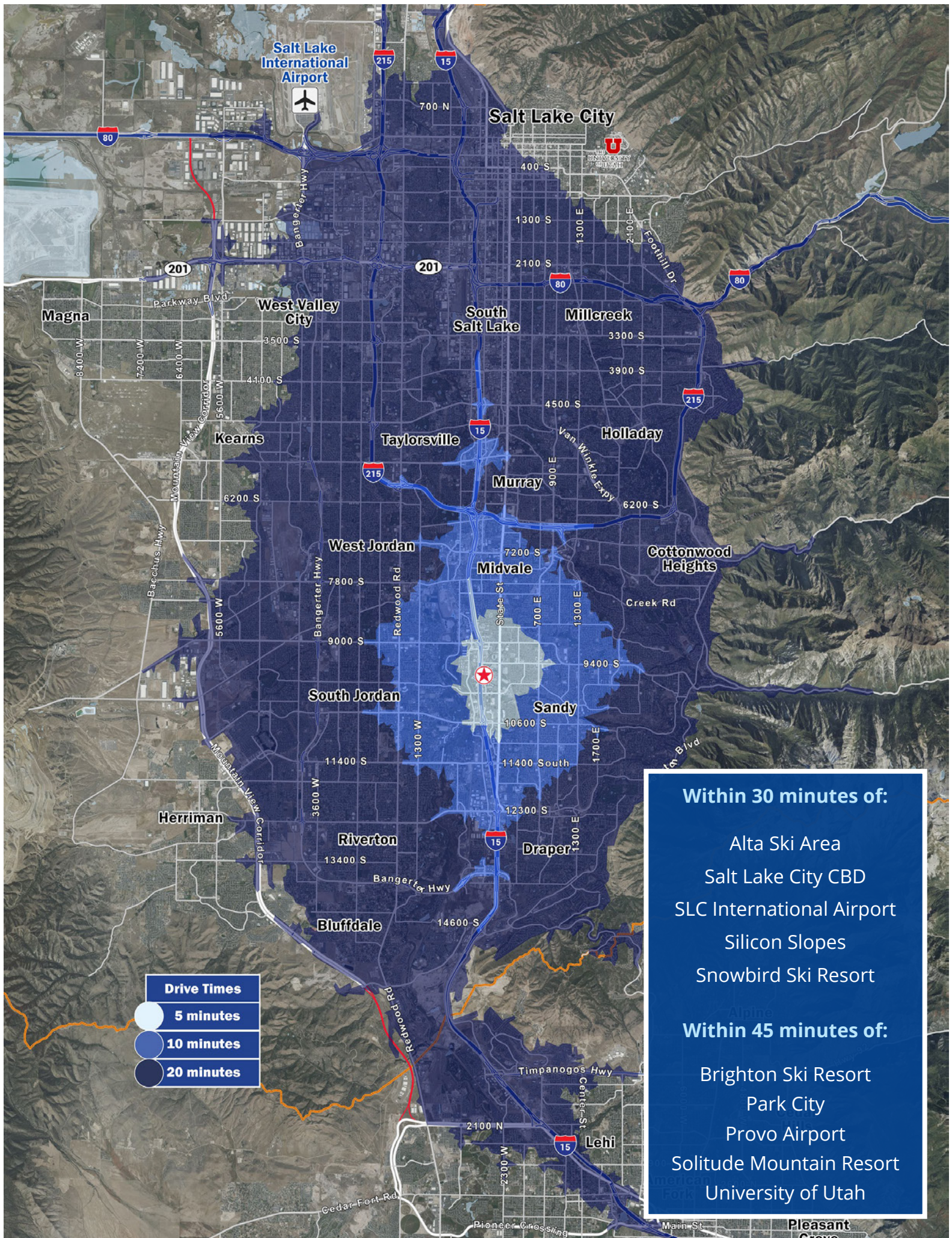
1 Mile	\$87,853
3 Miles	\$99,462
5 Miles	\$109,911



### Avg Household Income

1 Mile	\$108,511
3 Miles	\$122,575
5 Miles	\$143,201





**Drive Times**

- 5 minutes
- 10 minutes
- 20 minutes

- Within 30 minutes of:**
- Alta Ski Area
  - Salt Lake City CBD
  - SLC International Airport
  - Silicon Slopes
  - Snowbird Ski Resort
- Within 45 minutes of:**
- Brighton Ski Resort
  - Park City
  - Provo Airport
  - Solitude Mountain Resort
  - University of Utah



