

620

Moorefield Park Drive

620

Moorefield Park Drive



AGENT: CHRIS WALLACE
804 591 2424
RICHMOND, VA
chris.wallace@colliers.com

AGENT: ERIC WILLIFORD
804 591 2410
RICHMOND, VA
eric.williford@colliers.com

COLLIERS INTERNATIONAL
7200 Glen Forest Drive
Suite 200
Richmond, VA 23226

www.colliers.com/richmond

This document has been prepared by Colliers International for advertising and general information only. Colliers International makes no guarantees, representations or warranties of any kind, expressed or implied, regarding the information including, but not limited to, warranties of content, accuracy and reliability. Any interested party should undertake their own inquiries as to the accuracy of the information. Colliers International excludes unequivocally all inferred or implied terms, conditions and warranties arising out of this document and excludes all liability for loss and damages arising there from. This publication is the copyrighted property of Colliers International and/or its licensor(s). ©2015. All rights reserved. File name: MoorefieldVI_Lease rev 1-24-18

FOR LEASE

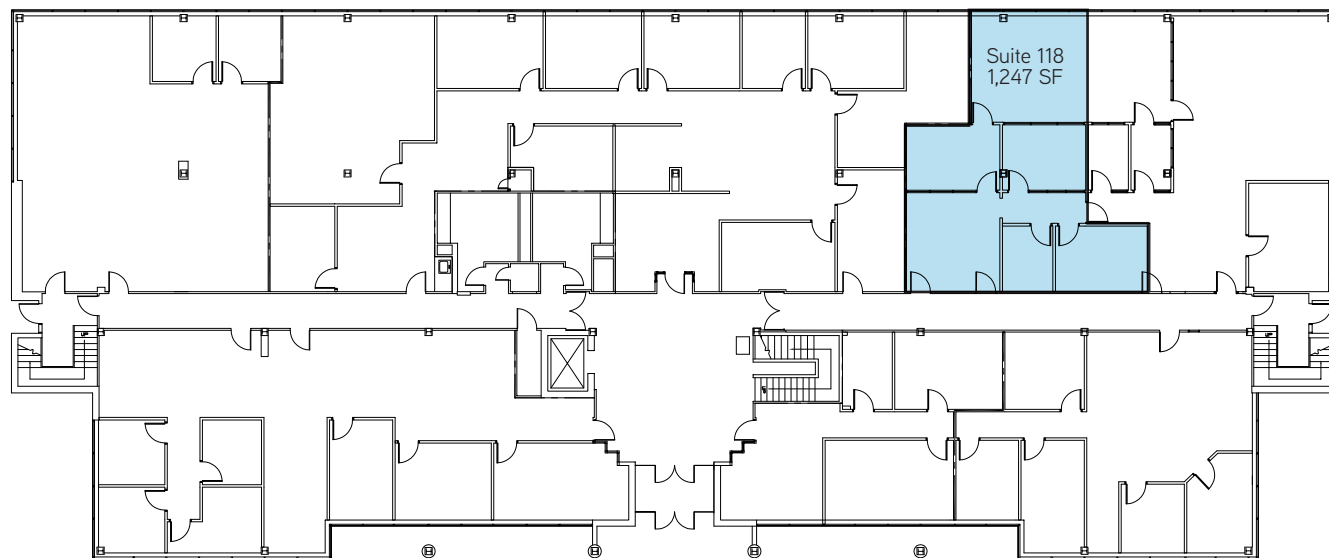




Property Features

- › Up to 2,453 SF available for lease
- › Renovated first floor lobby!
- › Direct Access to Midlothian Turnpike
- › Beautiful Lake Views with walking trail
- › Monument signage opportunity
- › Furnished suites available
- › Less than 1.5 miles to Powhite Parkway
- › Large amenity base includes: TGI Fridays, Planet Fitness, Applebee's, Olive Garden, Total Wine, Gold's Gym, Carrabbas Italian Grill, FedEx Office and many more!
- › Four minute drive to HCA Johnston Willis Hospital
- › For Lease: \$15.00/SF, Full Service

FIRST FLOOR ›



SECOND FLOOR ›

