

FOR SALE > APPROXIMATELY 30 ACRES INDUSTRIALLY ZONED LAND

THE NORTHEAST CORNER OF THORNTON ROAD AND ASH AVENUE, CASA GRANDE, AZ



MAJOR PRICE REDUCTION



THE PROPERTY

- ±30 ACRES
- I-1 ZONING
- PARCEL #507-12-011L
- SQUARE IN SHAPE
- 2016 TAXES \$21,574.68
- 124.78 ACRE FEET
- WATER RIGHTS WITH PROPERTY

SALE PRICE: \$1,950,000 \$1,637,000

CONTACT:



KIM SOULÉ
602 222 5047
kim.soule@colliers.com

MIKE MONTOYA
602 222 5157
mike.montoya@colliers.com



MICHAEL S. HAMMOND SIOR, CRE
520 546 2700
mhammond@picor.com



LOCATION

Northeast corner of Thornton Road and Ash Avenue,
Casa Grande, AZ
1/2 mile south of Highway 84, The Gila Bend Highway
3 miles from Interstate 8
8 miles from the intersection of Interstates 10 and 8

CONTACT ASSISTANT

- > Economic Development – Access Arizona
- > Electric – Arizona Public Service
- > Water – Arizona Water Company
- > Sewer – City of Casa Grande
- > Gas – Southwest Gas



KIM SOULÉ
602 222 5047
kim.soule@colliers.com

MIKE MONTOYA
602 222 5157
mike.montoya@colliers.com



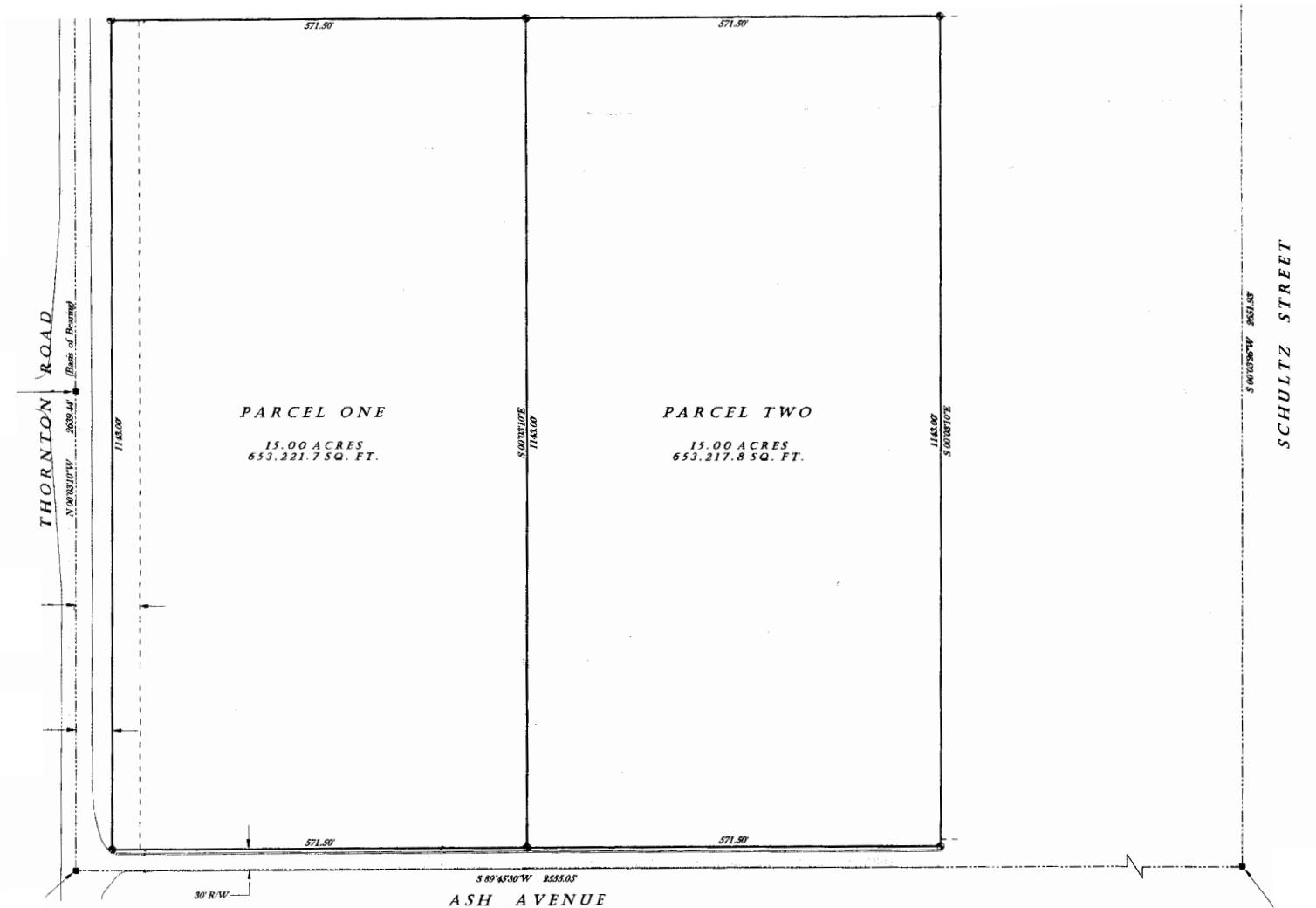
MICHAEL S. HAMMOND SIOR/CRE
520 546 2700
mhammond@picor.com

SURROUNDING BUSINESSES



- | | |
|----|-------------------------------|
| 1 | Alliance Trust |
| 2 | Bearing-Belt & Chain Inc |
| 3 | Bull Moose Tube Co |
| 4 | Calvary Chapel Of Casa Grande |
| 5 | Cardinal CG Co |
| 6 | Casa Grande Pumping Svc Inc |
| 7 | Casa Grande Rent A Can |
| 8 | Casa Grande Steetrods |
| 9 | Discount Container Svc |
| 10 | Express Stop |
| 11 | Franklin Foods |
| 12 | Glass Fiber Inc |
| 13 | Golden Corral Buffet & Grill |
| 14 | Golden Eagle Distributors |
| 15 | Hall Rick |
| 16 | Healthcare Medical Waste Svc |
| 17 | Helena Chemical Co |
| 18 | ITS Wire & Cable LLC |
| 19 | Jensen Precast |
| 20 | National Vitamin Co |
| 21 | NPL Construction Co |
| 22 | Praxair Distribution Inc |
| 23 | Price Industries |
| 24 | Pro Wall Building Products |
| 25 | Process Fabrication |
| 26 | Quality Liquid Feeds |
| 27 | Rent A Can |
| 28 | Rusty's Body Works |
| 29 | Seafab Metals Co |
| 30 | Star Service Auto Sales |
| 31 | SUBWAY |
| 32 | U-Haul Neighborhood Dealer |
| 33 | WEC Energy Group |
| 34 | Walmart Distribution |
| 35 | Daisy Brand Foods |

PARCEL MAP



This document/email has been prepared by Colliers International for advertising and general information only. Colliers International makes no guarantees, representations or warranties of any kind, expressed or implied, regarding the information including, but not limited to, warranties of content, accuracy and reliability. Any interested party should undertake their own inquiries as to the accuracy of the information. Colliers International excludes unequivocally all inferred or implied terms, conditions and warranties arising out of this document and excludes all liability for loss and damages arising there from. This publication is the copyrighted property of Colliers International and /or its licensor(s). © 2017. All rights reserved. This communication is not intended to cause or induce breach of an existing listing agreement.

KIM SOULÉ

602 222 5047

kim.soulé@colliers.com

MIKE MONTOYA

602 222 5157

mike.montoya@colliers.com



COLLIERS INTERNATIONAL
2390 E. Camelback Rd, Suite 100
Phoenix, AZ 85016
www.colliers.com/greaterphoenix



MICHAEL S. HAMMOND SIOR/CRE
520 546 2700
mhammond@picor.com