

FOR LEASE > ASHCAKE VILLAGE



# 10430 Dow-Gil Road

ASHLAND, VIRGINIA 23005



## Property Features

- 4,200 SF 2-story office building
- Lease first or second floor separately, 2,100± SF
- Newly repaved parking lot and refurbished exterior
- First Floor: 7 offices, 2 restrooms, kitchen, reception, storage  
Second Floor: 5 offices with large conference room and 2 bathrooms
- One block east of Route 1, close to I-95
- Possible warehouse space available
- \$4,005/month for entire building; first floor \$2,250/month; second floor \$1,800/month



AGENT: BILL MATTOX, SIOR  
804 591 2428  
RICHMOND, VA  
[bill.mattox@colliers.com](mailto:bill.mattox@colliers.com)

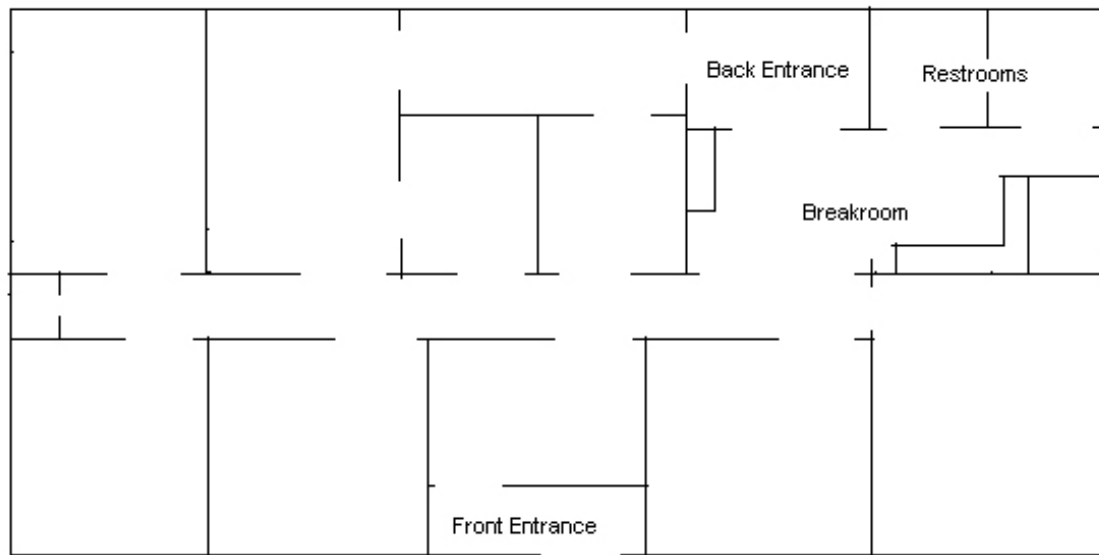
COLLIERS INTERNATIONAL  
6606 W. Broad Street, Suite 400  
Richmond, VA 23230  
[www.colliers.com/richmond](http://www.colliers.com/richmond)

FOR LEASE > ASHCAKE VILLAGE



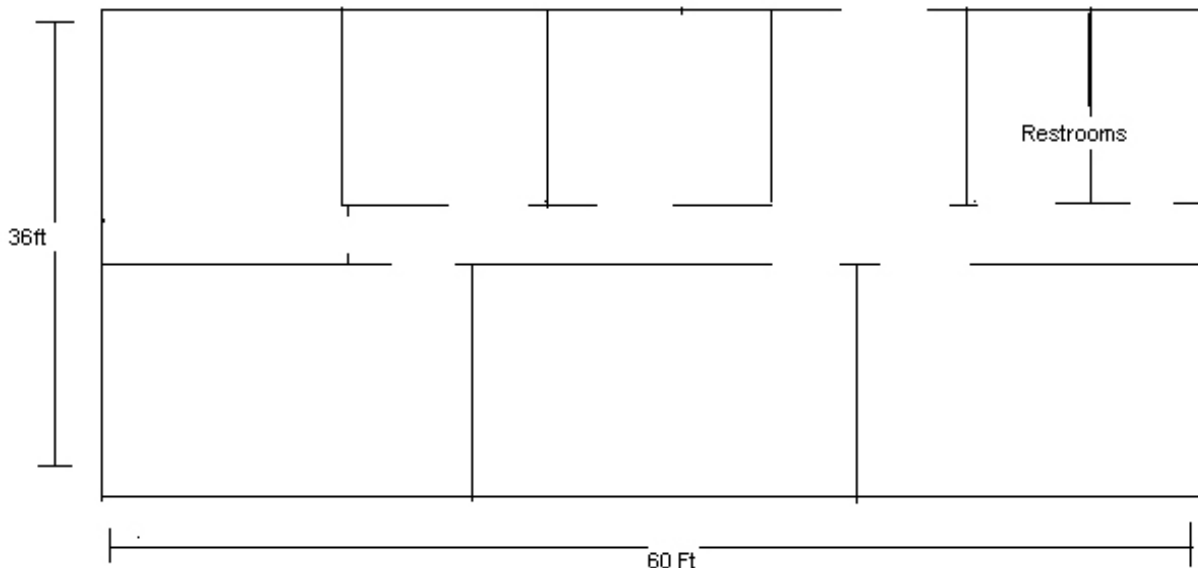
# 10430 Dow-Gil Road

ASHLAND, VIRGINIA 23005



1st Floor

2100 +/- SF



2nd Floor

2100 +/- SF

AGENT: BILL MATTOX, SIOR  
804 591 2428  
RICHMOND, VA  
bill.mattox@colliers.com

COLLIERS INTERNATIONAL  
6606 W. Broad Street, Suite 400  
Richmond, VA 23230  
www.colliers.com/richmond