

FOR LEASE > OFFICE SPACE

College Oaks Office Park

BUILDING C, 11600 COLLEGE BOULEVARD, OVERLAND PARK, KS



Property Features

- > Highly visible two-story building facing College Boulevard
- > Parking ratio of 4.0 / 1,000
- > Excellent access to I-435, I-35 and I-69
- > All common areas recently renovated
- > Ample retail amenities nearby
- > \$21.00 PSF, full service

Second Floor Availability

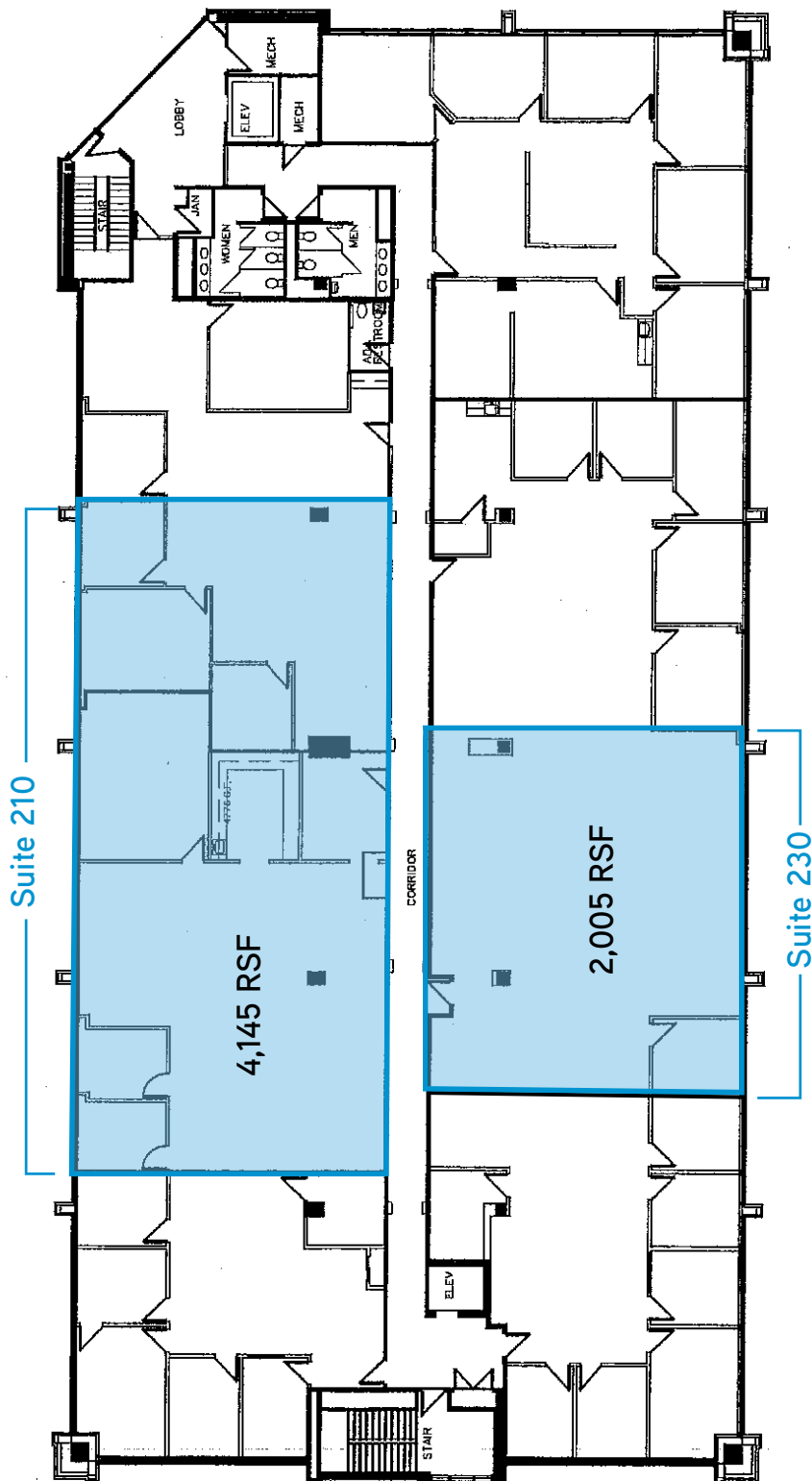
- > Suite 210: 4,145 RSF
- > Suite 230: 2,005 RSF

MATT STOVER
+1 816 556 1116
KANSAS CITY, MO
matt.stover@colliers.com

PHIL JAMES
+1 816 556 1125
KANSAS CITY, MO
phil.james@colliers.com

COLLIERS INTERNATIONAL
4520 Main Street, Suite 1000
Kansas City, MO 64111
www.colliers.com

A map of the area around Valleybrooke Park. The map shows several streets including W 106TH St, W 107TH St, W 108TH St, W 109TH St, W 110TH St, W 112TH St, and W 113TH St. Major highways are marked with shields: 435, 30, 82, 435, and 169. A blue circle labeled 'Site' is located near the intersection of College Blvd and W 112TH St. Other streets shown include Quivira Rd, North Campus Dr, and Nieman Rd. Valleybrooke Park is a large green area in the center of the map.



MATT STOVER
+1 816 556 1116
KANSAS CITY, MO
matt.stover@colliers.com

COLLIERS INTERNATIONAL
4520 Main Street, Suite 1000
Kansas City, MO 64111
www.colliers.com

This document has been prepared by Colliers International for advertising and general information only. Colliers International makes no guarantees, representations or warranties of any kind, expressed or implied, regarding the information including, but not limited to, warranties of content, accuracy and reliability. Any interested party should undertake their own inquiries as to the accuracy of the information. Colliers International excludes unequivocally all inferred or implied terms, conditions and warranties arising out of this document and excludes all liability for loss and damages arising there from. This publication is the copyrighted property of Colliers International and/or its licensors(s). ©2018. All rights reserved.

