



Accelerating success.



For Sale (FS)

Asking Price:

**\$1.79M**

Contact us:

**Alika Cosner (S)**

Vice President  
Lic# RS-69441  
808 292 4599  
alika.cosner@colliers.com

**Michael Gomes (S)**

Associate  
Lic# RS-82817  
808 285 9502  
michael.gomes@colliers.com

220 S. King Street, Suite 1800  
Honolulu, Hawaii 96813  
808 524 2666  
colliers.com

## Kapolei Trade Center

2045 Lauwiliwili Street, Kapolei, HI 96707

Kapolei Trade Center is a high-quality business/industrial condominium project located in the master planned Kapolei Business Park, within the award winning master planned community of Kapolei. The property is situated on 11.9 fee simple acres of I-2 industrial zoned property and contains 17 single-story concrete and glass buildings with 93 units ranging in size from 1,884 square feet to 20,814 square feet.

This opportunity includes recently completed mezzanine office space serviced with split A/C, multiple private offices, a conference room, and private restrooms. The rear accessible roll-up doors to this unit is situated on the breezeway which provided less congestion than the internal units for loading/unloading and better turning radiuses for larger vehicles.

### Features and Benefits

- Glass storefronts
- Rear accessible grade level roll-up doors
- Fully built-out office space with split A/C units
- 6 parking stalls

# For Sale

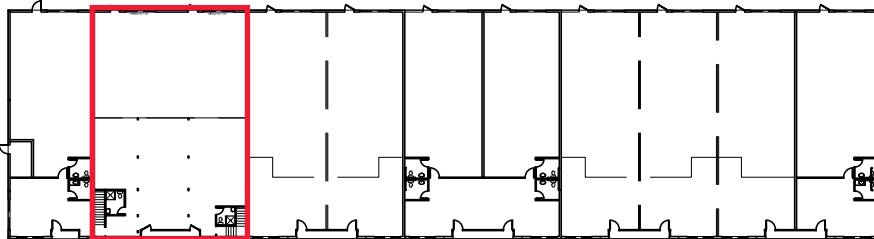
## Property Information

|               |  |          |
|---------------|--|----------|
| TMK Number    | 1-9-1-75-22-0083/0084                      |          |
| Address       | 2045 Lauwiliwili Street, Kapolei, HI 96707 |          |
| Asking Price  | \$1,790,000                                |          |
| Tenure        | Fee Simple                                 |          |
| Condo Fee     | \$0.28 PSF/Month                           |          |
| RPT           | \$0.25 PSF/Month                           |          |
| Area          | Kapolei                                    |          |
| Zoning        | I-2 Intensive Industrial                   |          |
| Property Size | Ground floor:                              | 3,968 SF |
|               | 2nd Floor office:                          | 1,798 SF |
|               | Total:                                     | 5,766 SF |

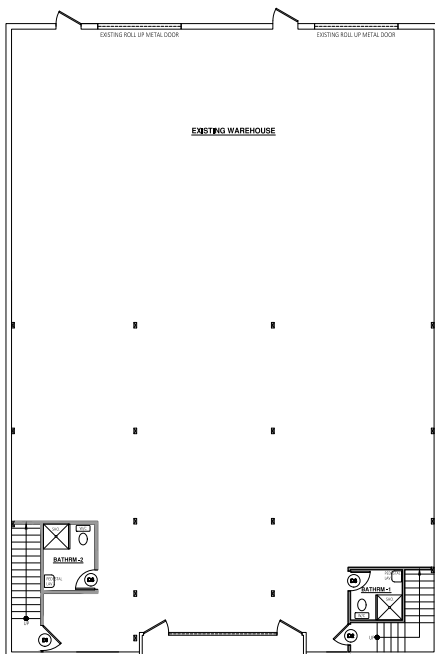


## Site Plan

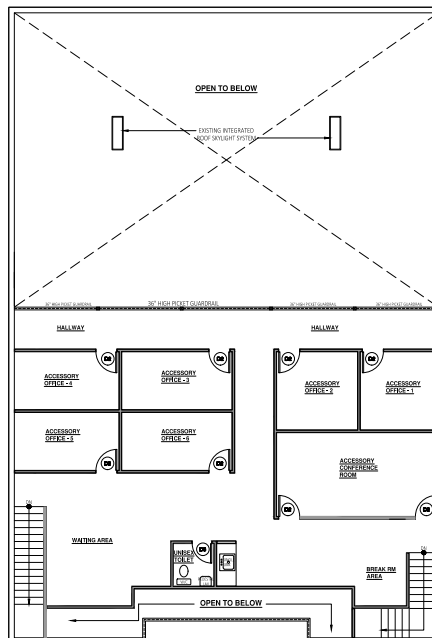
Building 15



## Lower Floor



## Upper Floor



### Alika Cosner (S)

Vice President  
Lic# RS-69441  
808 292 4599  
alika.cosner@colliers.com

### Michael Gomes (S)

Associate  
Lic# RS-82817  
808 285 9502  
michael.gomes@colliers.com

220 S. King Street, Suite 1800  
Honolulu, Hawaii 96813  
808 524 2666  
colliers.com

This document/email has been prepared by Colliers for advertising and general information only. Colliers makes no guarantees, representations or warranties of any kind, expressed or implied, regarding the information including, but not limited to, warranties of content, accuracy and reliability. Any interested party should undertake their own inquiries as to the accuracy of the information. Colliers excludes unequivocally all inferred or implied terms, conditions and warranties arising out of this document and excludes all liability for loss and damages arising there from. This publication is the copyrighted property of Colliers and /or its licensor(s). © 2021. All rights reserved. This communication is not intended to cause or induce breach of an existing listing agreement.